

199

FIRST AVENUE EAST VILLAGE, NYC

Between East 12th & 13th Streets

RETAIL FOR LEASE

APPROXIMATE SIZE

Ground Floor: 1,000 SF
Basement: 500 SF

ASKING RENT

\$13,500/Month

POSSESSION

Immediate

TERM

10 Years

FRONTAGE

12 FT

COMMENTS

- Built-out retail
- All dry uses considered
- Heavy East Village foot traffic

NEIGHBORS

Sauce Pizzeria • Saltwater Coffee • Thai Terminal
• Motorino Pizzeria • Salma • S'MAC • Sao Mai
• Tribeca Pediatrics • Nudibranch • Brooklyn
Dumpling Shop • Bar Lula • Wild Son • Goodnight
Sunny • Electric Burrito • Oiji • M&Là Project • Raiz
NYC • Cafe Mogador • David's Café • Hanoi House
• Empellon Al Pastor • Whitmans • Thursday Kitchen

TRANSPORTATION

4 5 6 N Q R W L F

JAMES FAMULARO

President

GREG GOLDBERG

Senior Director

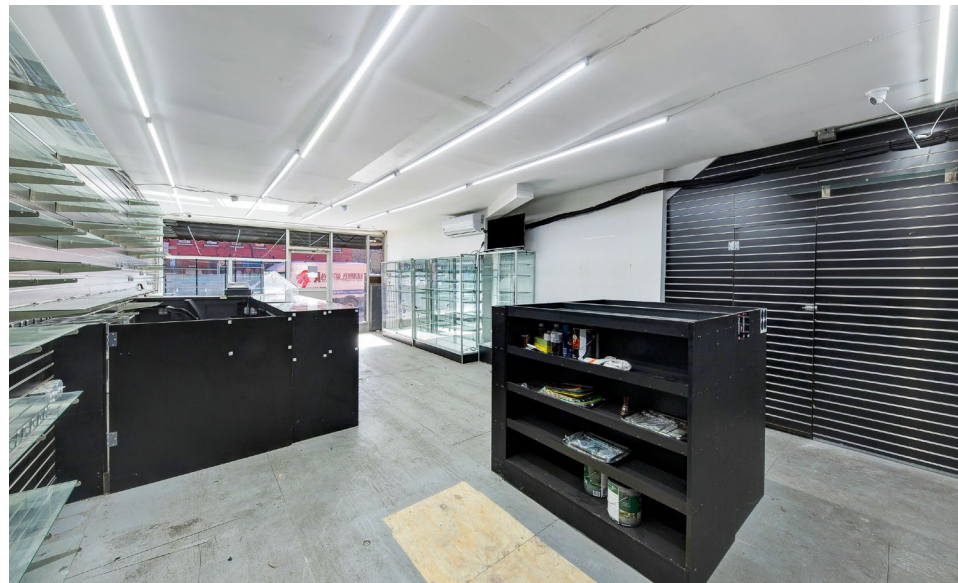
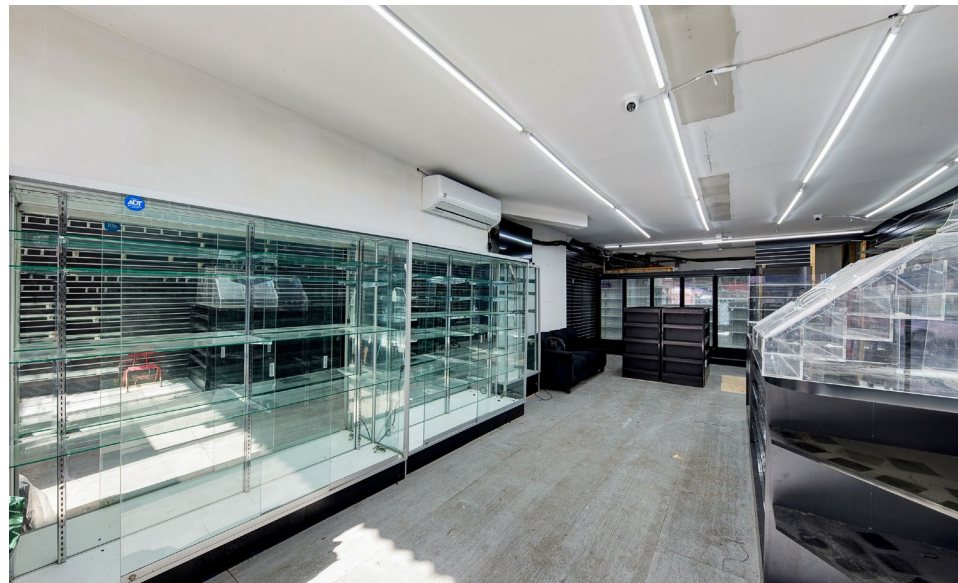
646.780.4904

ggoldberg@meridiancapital.com



MERIDIAN
RETAIL LEASING

All information supplied is from sources deemed reliable and is furnished subject to errors, omissions, modifications, removal of the listing from sale or lease, and to any listing conditions, including the rates and manner of payment of commissions for particular offerings imposed by Meridian Capital Group. This information may include estimates and projections prepared by Meridian Capital Group with respect to future events, and these future events may or may not actually occur. Such estimates and projections reflect various assumptions concerning anticipated results. While Meridian Capital Group believes these assumptions are reasonable, there can be no assurance that any of these estimates and projections will be correct. Therefore, actual results may vary materially from these estimates and projections. Any square footage dimensions set forth are approximate.



INTERIOR

JAMES FAMULARO
President

GREG GOLDBERG
Senior Director
646.780.4904
ggoldberg@meridiancapital.com



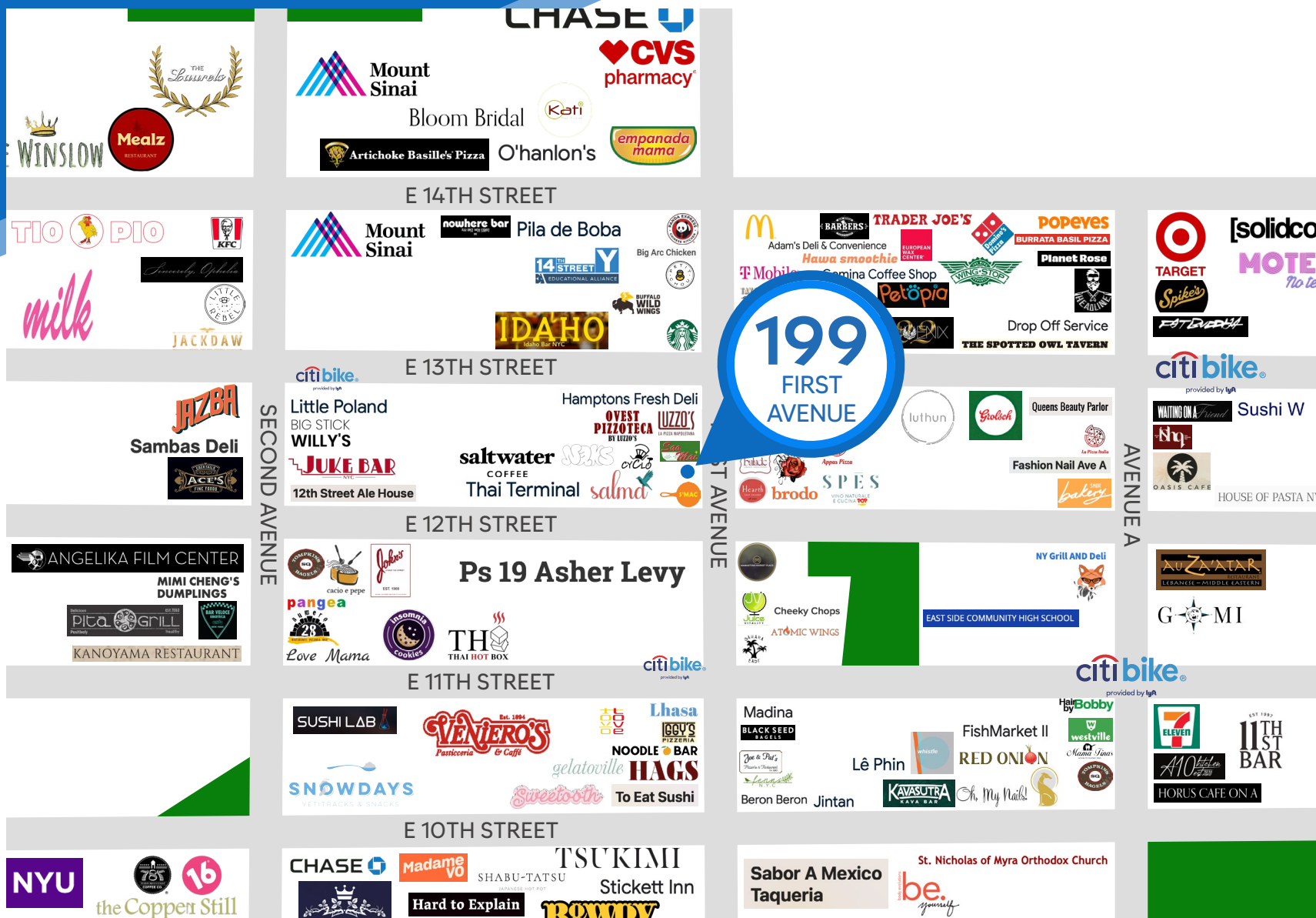
All information supplied is from sources deemed reliable and is furnished subject to errors, omissions, modifications, removal of the listing from sale or lease, and to any listing conditions, including the rates and manner of payment of commissions for particular offerings imposed by Meridian Capital Group. This information may include estimates and projections prepared by Meridian Capital Group with respect to future events, and these future events may or may not actually occur. Such estimates and projections reflect various assumptions concerning anticipated results. While Meridian Capital Group believes these assumptions are reasonable, there can be no assurance that any of these estimates and projections will be correct. Therefore, actual results may vary materially from these estimates and projections. Any square footage dimensions set forth are approximate.

199 FIRST AVENUE

EAST VILLAGE, NYC | Between East 12th and 13th Streets

RETAIL FOR LEASE

INTERIOR



JAMES FAMULARO
President

GREG GOLDBERG
Senior Director
646.780.4904
ggoldberg@meridiancapital.com

MERIDIAN
RETAIL LEASING

All information supplied is from sources deemed reliable and is furnished subject to errors, omissions, modifications, removal of the listing from sale or lease, and to any listing conditions, including the rates and manner of payment of commissions for particular offerings imposed by Meridian Capital Group. This information may include estimates and projections prepared by Meridian Capital Group with respect to future events, and these future events may or may not actually occur. Such estimates and projections reflect various assumptions concerning anticipated results. While Meridian Capital Group believes these assumptions are reasonable, there can be no assurance that any of these estimates and projections will be correct. Therefore, actual results may vary materially from these estimates and projections. Any square footage dimensions set forth are approximate.