

450

EAST 81ST STREET
YORKVILLE, NYC

Between York & First Avenues

RETAIL FOR LEASE



APPROXIMATE SIZE

400 SF + Basement

ASKING RENT

\$4,500/Month

POSSESSION

Immediate

TERM

Negotiable

FRONTAGE

10 FT

COMMENTS

- Clean white-box space
- Strong co-tenants
- High residential area
- All uses considered

NEIGHBORS

Panineria • Chirping Chicken • San Matteo • Aunt Jake's • H&H Bagels • Chip City • Chick-Fil-A • Flex Mussels • Luke's Lobster • Felice 83 • Maman

TRANSPORTATION

N Q R 4 5 6

PROPERTY INFORMATION

JAMES FAMULARO

President
646.658.7373
jfamularo@meridiancapital.com

JORDAN LANGER

Senior Associate
212.468.5977
jlanger@meridiancapital.com



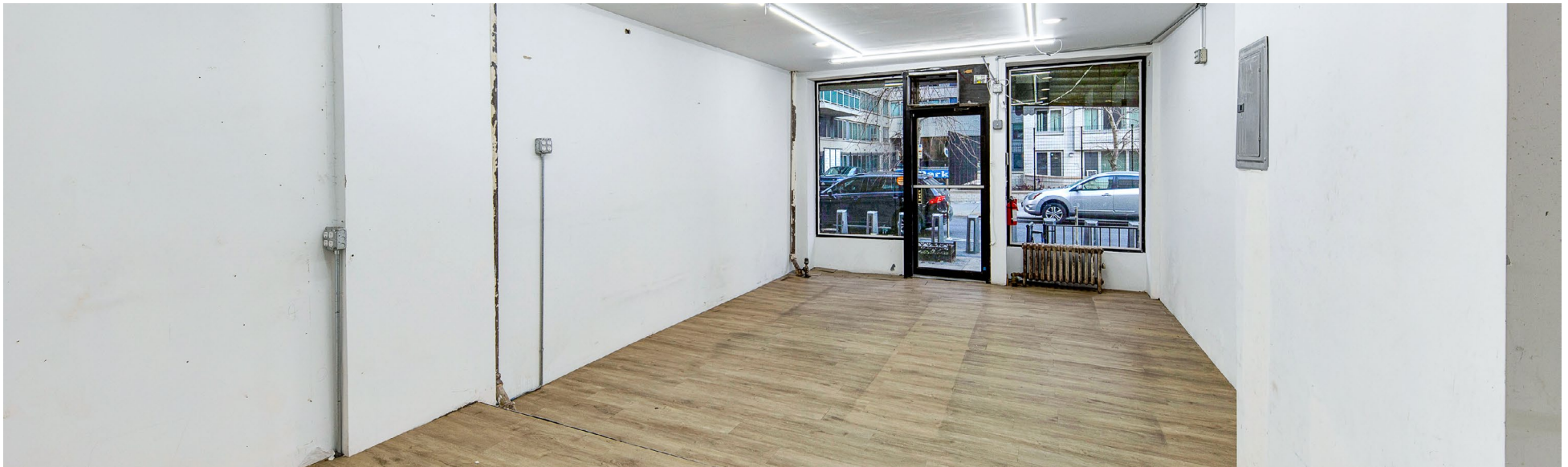
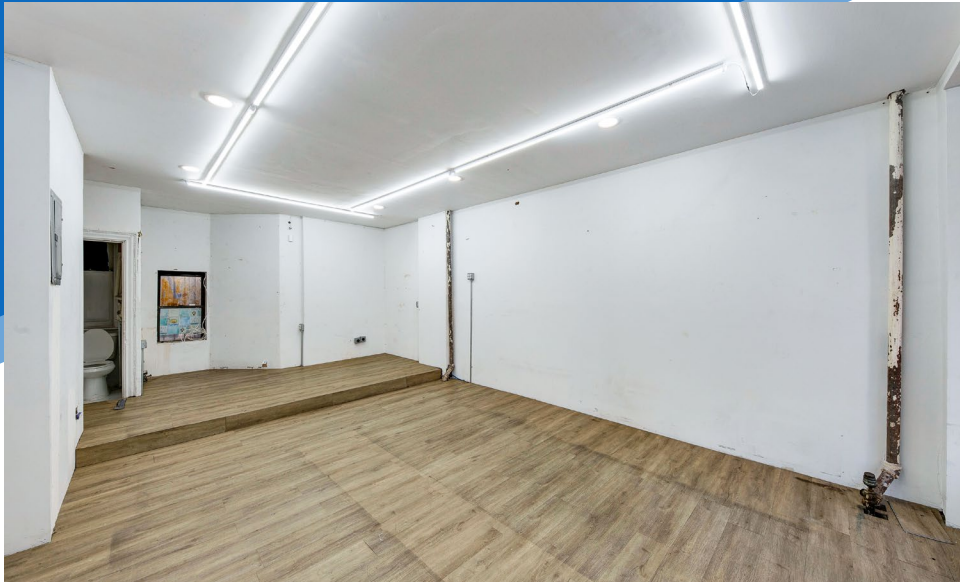
MERIDIAN
RETAIL LEASING

All information supplied is from sources deemed reliable and is furnished subject to errors, omissions, modifications, removal of the listing from sale or lease, and to any listing conditions, including the rates and manner of payment of commissions for particular offerings imposed by Meridian Capital Group. This information may include estimates and projections prepared by Meridian Capital Group with respect to future events, and these future events may or may not actually occur. Such estimates and projections reflect various assumptions concerning anticipated results. While Meridian Capital Group believes these assumptions are reasonable, there can be no assurance that any of these estimates and projections will be correct. Therefore, actual results may vary materially from these estimates and projections. Any square footage dimensions set forth are approximate.

450 EAST 81ST STREET

YORKVILLE, NYC | Between York and First Avenues

RETAIL FOR LEASE



INTERIOR

JAMES FAMULARO

President
646.658.7373
jfamularo@meridiancapital.com

JORDAN LANGER

Senior Associate
212.468.5977
jlanger@meridiancapital.com



MERIDIAN
RETAIL LEASING

All information supplied is from sources deemed reliable and is furnished subject to errors, omissions, modifications, removal of the listing from sale or lease, and to any listing conditions, including the rates and manner of payment of commissions for particular offerings imposed by Meridian Capital Group. This information may include estimates and projections prepared by Meridian Capital Group with respect to future events, and these future events may or may not actually occur. Such estimates and projections reflect various assumptions concerning anticipated results. While Meridian Capital Group believes these assumptions are reasonable, there can be no assurance that any of these estimates and projections will be correct. Therefore, actual results may vary materially from these estimates and projections. Any square footage dimensions set forth are approximate.

450 EAST 81ST STREET

YORKVILLE, NYC | Between York and First Avenues

RETAIL FOR LEASE

INTERIOR



JAMES FAMULARO

President
646.658.7373
jfamularo@meridiantcapital.com

JORDAN LANGER

Senior Associate
212.468.5977
jlanger@meridiantcapital.com



MERIDIAN
RETAIL LEASING

All information supplied is from sources deemed reliable and is furnished subject to errors, omissions, modifications, removal of the listing from sale or lease, and to any listing conditions, including the rates and manner of payment of commissions for particular offerings imposed by Meridian Capital Group. This information may include estimates and projections prepared by Meridian Capital Group with respect to future events, and these future events may or may not actually occur. Such estimates and projections reflect various assumptions concerning anticipated results. While Meridian Capital Group believes these assumptions are reasonable, there can be no assurance that any of these estimates and projections will be correct. Therefore, actual results may vary materially from these estimates and projections. Any square footage dimensions set forth are approximate.

NEIGHBORS



JAMES FAMULARO
 President
 646.658.7373
 jfamularo@meridiancapital.com

JORDAN LANGER
 Senior Associate
 212.468.5977
 jlanger@meridiancapital.com



MERIDIAN
 RETAIL LEASING