

# 2500

## BARKER AVENUE

ALLERTON, BRONX

Corner of Barker & Mace Avenues

COMMUNITY FACILITY FOR LEASE

### APPROXIMATE SIZE

Ground Floor  
Space A: 2,518 SF  
Space B: 3,388 SF

### ASKING RENT

\$40 PSF

### POSSESSION

Arranged

### TERM

10-20 Years

### FRONTAGE

Space A: 50 FT  
Space B: 15 FT

### COMMENTS

- Two potential build-to-suit community facilities available
- Wide window frontage with plenty of natural light
- Perfect for daycare/preschool, located in a childcare desert zone
- Steps from Bronx Park and Allerton Avenue Station

### NEIGHBORS

- Dunkin' • Key Food • Metro by T-Mobile • Service Q • Celestial Essentials • Hong Kong Restaurant • McDonald's • Bank of America • Golden Krust • Public School 96 • Classic Barbershop

### TRANSPORTATION



**Bx39**

### JAMES FAMULARO

President  
646.658.7373  
jfamularo@meridiancapital.com

### BOBBY ORTENSE

Director  
212.468.5975  
bortense@meridiancapital.com

### MYLES VANDELL

Associate  
212.468.5975  
mvandell@meridiancapital.com



**MERIDIAN**  
RETAIL LEASING

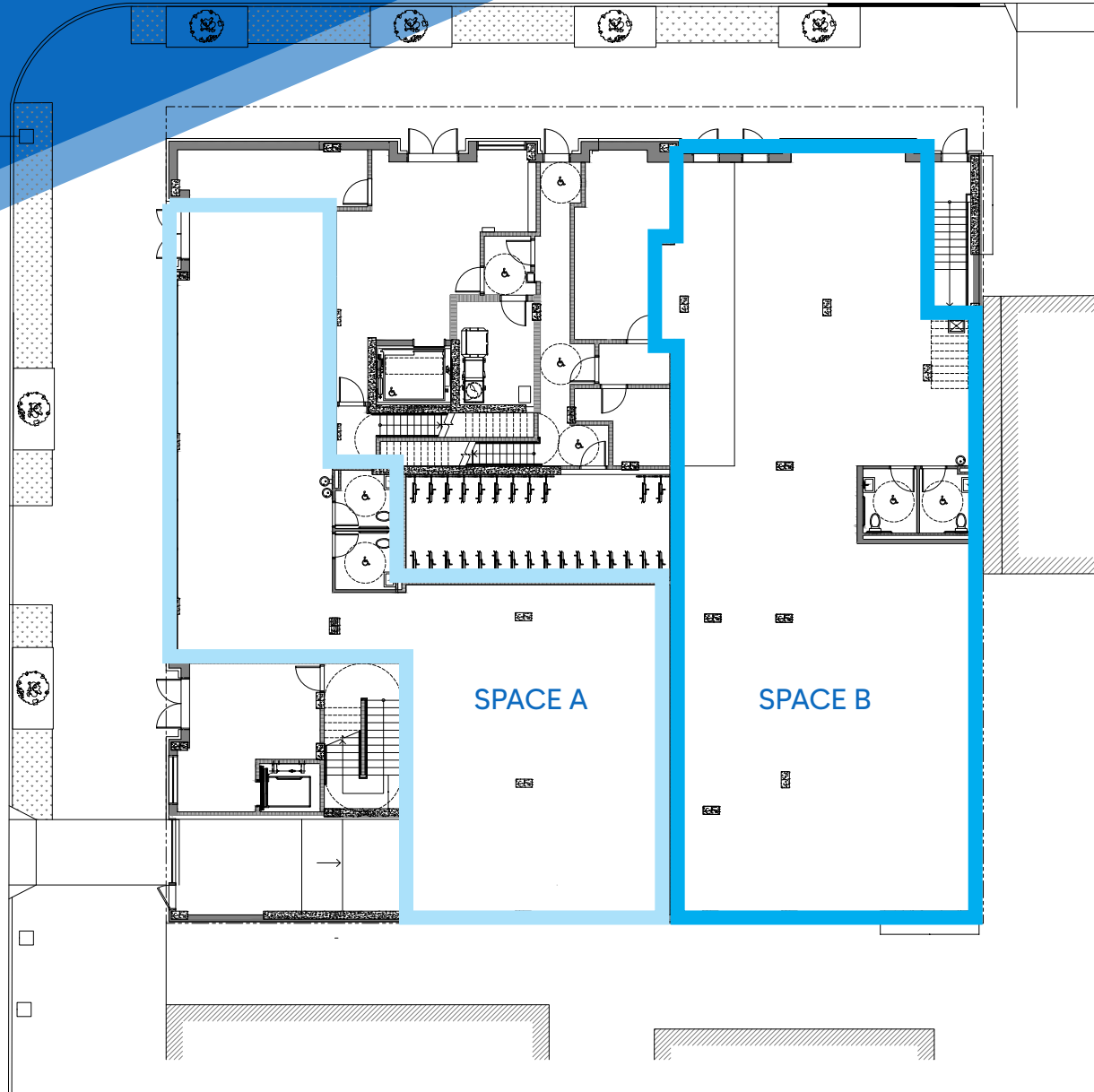
All information supplied is from sources deemed reliable and is furnished subject to errors, omissions, modifications, removal of the listing from sale or lease, and to any listing conditions, including the rates and manner of payment of commissions for particular offerings imposed by Meridian Capital Group. This information may include estimates and projections prepared by Meridian Capital Group with respect to future events, and these future events may or may not actually occur. Such estimates and projections reflect various assumptions concerning anticipated results. While Meridian Capital Group believes these assumptions are reasonable, there can be no assurance that any of these estimates and projections will be correct. Therefore, actual results may vary materially from these estimates and projections. Any square footage dimensions set forth are approximate.

2500 BARKER AVENUE  
ALLERTON, BRONX | Corner of Barker and Mace Avenues

COMMUNITY FACILITY FOR LEASE

FLOOR PLAN | SECOND FLOOR

MACE AVENUE



JAMES FAMULARO

President  
646.658.7373  
jfamularo@meridiancapital.com

BOBBY ORTENSE

Director  
212.468.5953  
bortense@meridiancapital.com

MYLES VANDELL

Associate  
212.468.5975  
mvandell@meridiancapital.com



**MERIDIAN**  
RETAIL LEASING

All information supplied is from sources deemed reliable and is furnished subject to errors, omissions, modifications, removal of the listing from sale or lease, and to any listing conditions, including the rates and manner of payment of commissions for particular offerings imposed by Meridian Capital Group. This information may include estimates and projections prepared by Meridian Capital Group with respect to future events, and these future events may or may not actually occur. Such estimates and projections reflect various assumptions concerning anticipated results. While Meridian Capital Group believes these assumptions are reasonable, there can be no assurance that any of these estimates and projections will be correct. Therefore, actual results may vary materially from these estimates and projections. Any square footage dimensions set forth are approximate.

# 2500 BARKER AVENUE

ALLERTON, BRONX | Corner of Barker and Mace Avenues

## COMMUNITY FACILITY FOR LEASE



NEIGHBORS

### JAMES FAMULARO

President  
646.658.7373  
jfamularo@meridiancapital.com

### BOBBY ORTENSE

Director  
212.468.5953  
bortense@meridiancapital.com

### MYLES VANDELL

Associate  
212.468.5975  
mvandell@meridiancapital.com



# MERIDIAN RETAIL LEASING

All information supplied is from sources deemed reliable and is furnished subject to errors, omissions, modifications, removal of the listing from sale or lease, and to any listing conditions, including the rates and manner of payment of commissions for particular offerings imposed by Meridian Capital Group. This information may include estimates and projections prepared by Meridian Capital Group with respect to future events, and these future events may or may not actually occur. Such estimates and projections reflect various assumptions concerning anticipated results. While Meridian Capital Group believes these assumptions are reasonable, there can be no assurance that any of these estimates and projections will be correct. Therefore, actual results may vary materially from these estimates and projections. Any square footage dimensions set forth are approximate.