

250

THIRD AVENUE GRAMERCY, NYC

Between East 20th & 21st Streets

RETAIL FOR LEASE



APPROXIMATE SIZE

Ground Floor: 1,650 SF
Basement: 500 SF

ASKING RENT

\$12,000/Month

POSSESSION

Immediate

TERM

Negotiable

FRONTAGE

25 FT

COMMENTS

- Space in excellent condition under market price
- Type-2 venting possible
- 18 FT - 25 FT ceiling heights with wide frontage
- Steps from Gramercy Park situated in Gramercy's prime retail/restauranr corridor

NEIGHBORS

Barfly • Gramercy Bagels • Lunetta Pizza & Restaurant • Paddy Maguire's Ale House • L'Express • Isabelle's Osteria • Eleni's • Daily Provisions • Caffé Panna • Cleo • Oceans • Midnight Blue

TRANSPORTATION



JAMES FAMULARO

President

SAMUEL MUKAMAL

Associate
212.468.5965
smukamal@meridiancapital.com



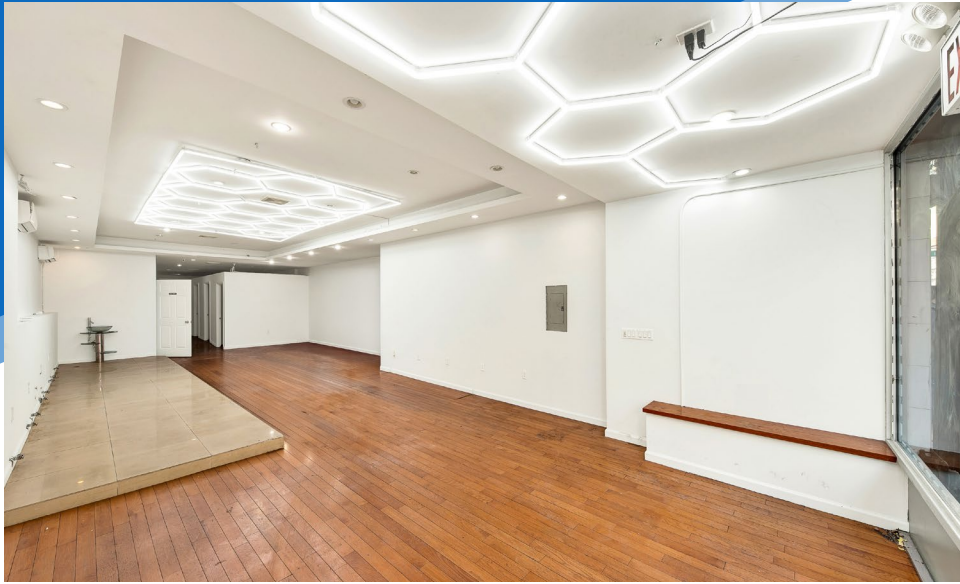
MERIDIAN
RETAIL LEASING

All information supplied is from sources deemed reliable and is furnished subject to errors, omissions, modifications, removal of the listing from sale or lease, and to any listing conditions, including the rates and manner of payment of commissions for particular offerings imposed by Meridian Capital Group. This information may include estimates and projections prepared by Meridian Capital Group with respect to future events, and these future events may or may not actually occur. Such estimates and projections reflect various assumptions concerning anticipated results. While Meridian Capital Group believes these assumptions are reasonable, there can be no assurance that any of these estimates and projections will be correct. Therefore, actual results may vary materially from these estimates and projections. Any square footage dimensions set forth are approximate.

250 THIRD AVENUE

GRAMERCY, NYC | Between East 20th and 21st Streets

RETAIL FOR LEASE



INTERIOR

JAMES FAMULARO
President

SAMUEL MUKAMAL
Associate
212.468.5965
smukamal@meridiancapital.com



MERIDIAN
RETAIL LEASING

All information supplied is from sources deemed reliable and is furnished subject to errors, omissions, modifications, removal of the listing from sale or lease, and to any listing conditions, including the rates and manner of payment of commissions for particular offerings imposed by Meridian Capital Group. This information may include estimates and projections prepared by Meridian Capital Group with respect to future events, and these future events may or may not actually occur. Such estimates and projections reflect various assumptions concerning anticipated results. While Meridian Capital Group believes these assumptions are reasonable, there can be no assurance that any of these estimates and projections will be correct. Therefore, actual results may vary materially from these estimates and projections. Any square footage dimensions set forth are approximate.

250 THIRD AVENUE

GRAMERCY, NYC | Between East 20th and 21st Streets

RETAIL FOR LEASE



NEIGHBORS

JAMES FAMULARO
President

SAMUEL MUKAMAL
Associate
212.468.5965
smukamal@meridiancapital.com



MERIDIAN
RETAIL LEASING

All information supplied is from sources deemed reliable and is furnished subject to errors, omissions, modifications, removal of the listing from sale or lease, and to any listing conditions, including the rates and manner of payment of commissions for particular offerings imposed by Meridian Capital Group. This information may include estimates and projections prepared by Meridian Capital Group with respect to future events, and these future events may or may not actually occur. Such estimates and projections reflect various assumptions concerning anticipated results. While Meridian Capital Group believes these assumptions are reasonable, there can be no assurance that any of these estimates and projections will be correct. Therefore, actual results may vary materially from these estimates and projections. Any square footage dimensions set forth are approximate.