

# 1982

## AMSTERDAM AVENUE WASHINGTON HEIGHTS, NYC

Between West 158<sup>th</sup> & 159<sup>th</sup> Streets

RETAIL / OFFICE FOR LEASE



### APPROXIMATE SIZE

2,265 SF + Full Basement

### ASKING RENT

\$8,500/Month

### POSSESSION

Immediate

### TERM

5-10 Years

### FRONTAGE

25 FT

### COMMENTS

- Space is in white-box condition
- Motivated landlord
- Established area with high foot traffic in a strong retail hub
- Can be vented; gas is available
- All uses considered

### NEIGHBORS

Pizza Hut • Mi Pueblo Deli • Domino's Pizza • Ella's Hair Unisex Salon • McDonald's • Semicolon Café • Planet Fitness • Chipotle • Apple Bank

### TRANSPORTATION



PROPERTY INFORMATION

JAMES FAMULARO

President

NOAM AZIZ

Director  
212.468.5984  
naziz@meridiancapital.com

NATHAN SHABOT

Associate  
212.468.5933  
nshabot@meridiancapital.com

ARIEL ILIAN

Associate  
212.468.5986  
ailian@meridiancapital.com



**MERIDIAN**  
RETAIL LEASING

All information supplied is from sources deemed reliable and is furnished subject to errors, omissions, modifications, removal of the listing from sale or lease, and to any listing conditions, including the rates and manner of payment of commissions for particular offerings imposed by Meridian Capital Group. This information may include estimates and projections prepared by Meridian Capital Group with respect to future events, and these future events may or may not actually occur. Such estimates and projections reflect various assumptions concerning anticipated results. While Meridian Capital Group believes these assumptions are reasonable, there can be no assurance that any of these estimates and projections will be correct. Therefore, actual results may vary materially from these estimates and projections. Any square footage dimensions set forth are approximate.



# 1982 AMSTERDAM AVENUE

WASHINGTON HEIGHTS, NYC | Between West 158<sup>th</sup> and 159<sup>th</sup> Streets

RETAIL / OFFICE FOR LEASE



INTERIOR

**JAMES FAMULARO**  
President

**NOAM AZIZ**  
Director  
212.468.5984  
naziz@meridiancapital.com

**NATHAN SHABOT**  
Associate  
212.468.5933  
nshabot@meridiancapital.com

**ARIEL ILIAN**  
Associate  
212.468.5986  
ailian@meridiancapital.com



**MERIDIAN**  
RETAIL LEASING

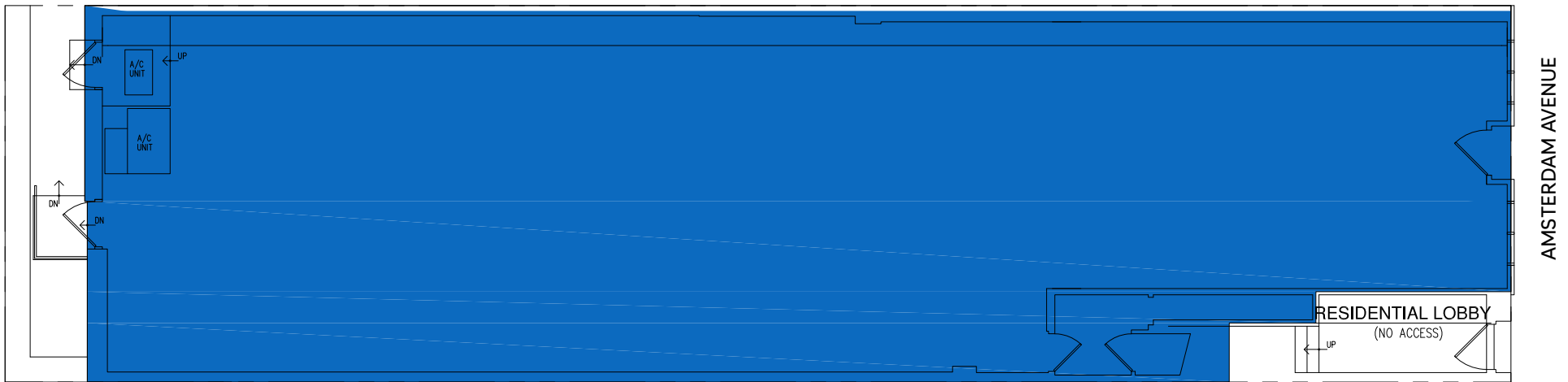
All information supplied is from sources deemed reliable and is furnished subject to errors, omissions, modifications, removal of the listing from sale or lease, and to any listing conditions, including the rates and manner of payment of commissions for particular offerings imposed by Meridian Capital Group. This information may include estimates and projections prepared by Meridian Capital Group with respect to future events, and these future events may or may not actually occur. Such estimates and projections reflect various assumptions concerning anticipated results. While Meridian Capital Group believes these assumptions are reasonable, there can be no assurance that any of these estimates and projections will be correct. Therefore, actual results may vary materially from these estimates and projections. Any square footage dimensions set forth are approximate.

# 1982 AMSTERDAM AVENUE

WASHINGTON HEIGHTS, NYC | Between West 158<sup>th</sup> and 159<sup>th</sup> Streets

RETAIL / OFFICE FOR LEASE

FLOOR PLAN



**JAMES FAMULARO**  
President

**NOAM AZIZ**  
Director  
212.468.5984  
naziz@meridiancapital.com

**NATHAN SHABOT**  
Associate  
212.468.5933  
nshabot@meridiancapital.com

**ARIEL ILIAN**  
Associate  
212.468.5986  
ailian@meridiancapital.com



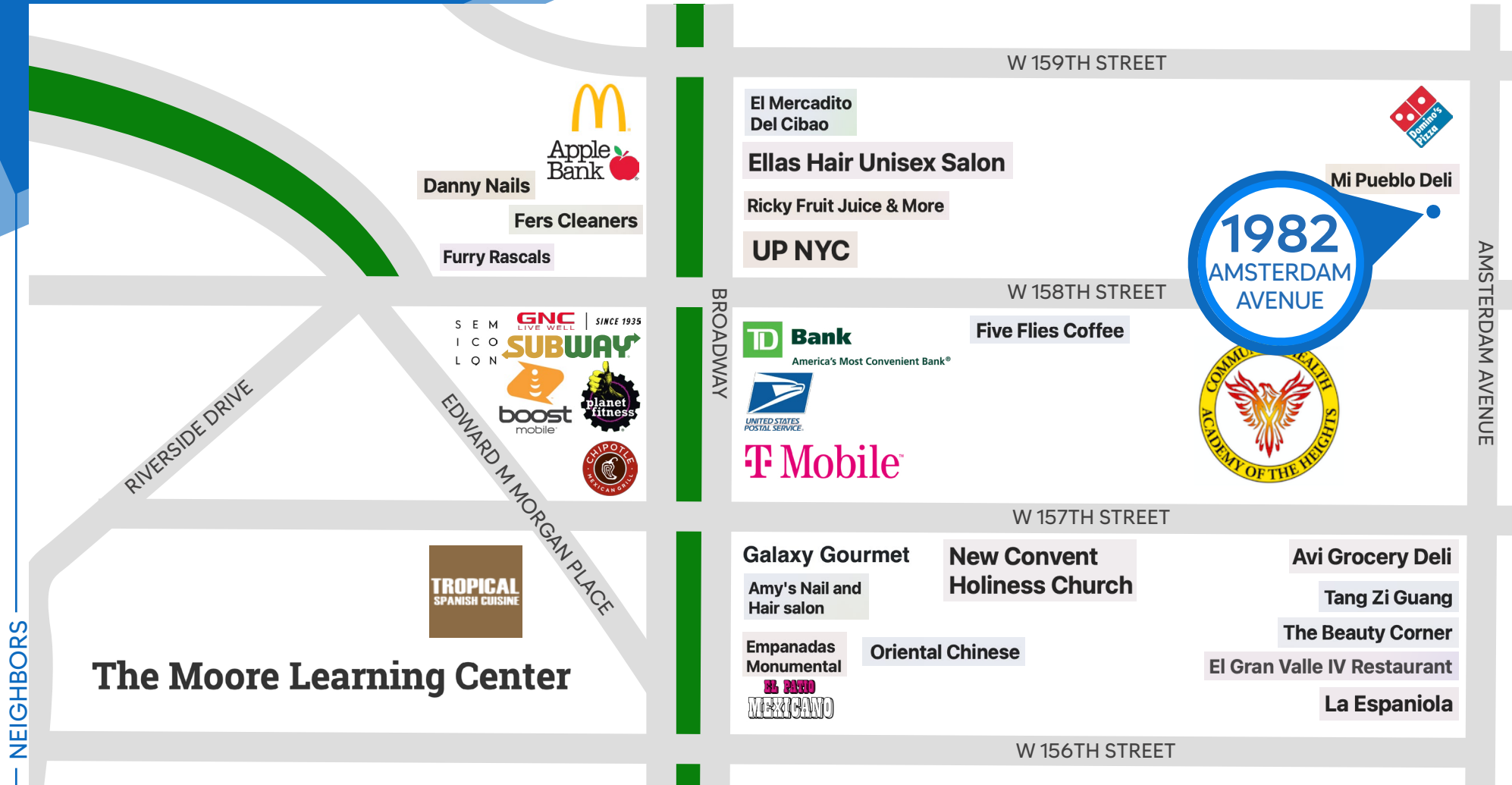
**MERIDIAN**  
RETAIL LEASING

All information supplied is from sources deemed reliable and is furnished subject to errors, omissions, modifications, removal of the listing from sale or lease, and to any listing conditions, including the rates and manner of payment of commissions for particular offerings imposed by Meridian Capital Group. This information may include estimates and projections prepared by Meridian Capital Group with respect to future events, and these future events may or may not actually occur. Such estimates and projections reflect various assumptions concerning anticipated results. While Meridian Capital Group believes these assumptions are reasonable, there can be no assurance that any of these estimates and projections will be correct. Therefore, actual results may vary materially from these estimates and projections. Any square footage dimensions set forth are approximate.

# 1982 AMSTERDAM AVENUE

WASHINGTON HEIGHTS, NYC | Between West 158<sup>th</sup> and 159<sup>th</sup> Streets

RETAIL / OFFICE FOR LEASE



NEIGHBORS

JAMES FAMULARO  
President

NOAM AZIZ  
Director  
212.468.5984  
naziz@meridiancapital.com

NATHAN SHABOT  
Associate  
212.468.5933  
nshabot@meridiancapital.com

ARIEL ILIAN  
Associate  
212.468.5986  
ailian@meridiancapital.com



**MERIDIAN**  
RETAIL LEASING

All information supplied is from sources deemed reliable and is furnished subject to errors, omissions, modifications, removal of the listing from sale or lease, and to any listing conditions, including the rates and manner of payment of commissions for particular offerings imposed by Meridian Capital Group. This information may include estimates and projections prepared by Meridian Capital Group with respect to future events, and these future events may or may not actually occur. Such estimates and projections reflect various assumptions concerning anticipated results. While Meridian Capital Group believes these assumptions are reasonable, there can be no assurance that any of these estimates and projections will be correct. Therefore, actual results may vary materially from these estimates and projections. Any square footage dimensions set forth are approximate.