

# 106

## READE STREET TRIBECA, NYC

Between Broadway & Church Street

RETAIL FOR LEASE



### APPROXIMATE SIZE

Ground Floor: 1,500 SF  
Mezzanine: 400 SF

### ASKING RENT

\$17,000/Month

### POSSESSION

May 1<sup>st</sup>, 2025

### TERM

10 Years

### FRONTAGE

20 FT

### COMMENTS

- Currently "Jacadi", an upscale childrens clothing store
- High ceilings with track-light installation
- Steps from multiple subway lines and City Hall Park
- Perfect for gallery, luxury fashion, fitness, or salon uses

### NEIGHBORS

Sugared + Bronzed • Pure Barre • Plump •  
Spotlight Kids • Glowbar • Heyday • Max  
Restaurant • Sushi of Gari • The Odeon • Hungry  
Ghost Coffee • The Armoury • Weather Up

### TRANSPORTATION

1 2 3 4 5 6 A C E J Z

PROPERTY INFORMATION

### JAMES FAMULARO

President  
646.658.7373  
jfamularo@meridiancapital.com

### BOBBY ORTENSE

Director  
212.468.5953  
bortense@meridiancapital.com



**MERIDIAN**  
RETAIL LEASING

All information supplied is from sources deemed reliable and is furnished subject to errors, omissions, modifications, removal of the listing from sale or lease, and to any listing conditions, including the rates and manner of payment of commissions for particular offerings imposed by Meridian Capital Group. This information may include estimates and projections prepared by Meridian Capital Group with respect to future events, and these future events may or may not actually occur. Such estimates and projections reflect various assumptions concerning anticipated results. While Meridian Capital Group believes these assumptions are reasonable, there can be no assurance that any of these estimates and projections will be correct. Therefore, actual results may vary materially from these estimates and projections. Any square footage dimensions set forth are approximate.

# 106 READE STREET

TRIBECA, NYC | Between Broadway and Church Street

RETAIL FOR LEASE



INTERIOR

## JAMES FAMULARO

President  
646.658.7373  
jfamularo@meridiancapital.com

## BOBBY ORTENSE

Director  
212.468.5953  
bortense@meridiancapital.com



**MERIDIAN**  
RETAIL LEASING

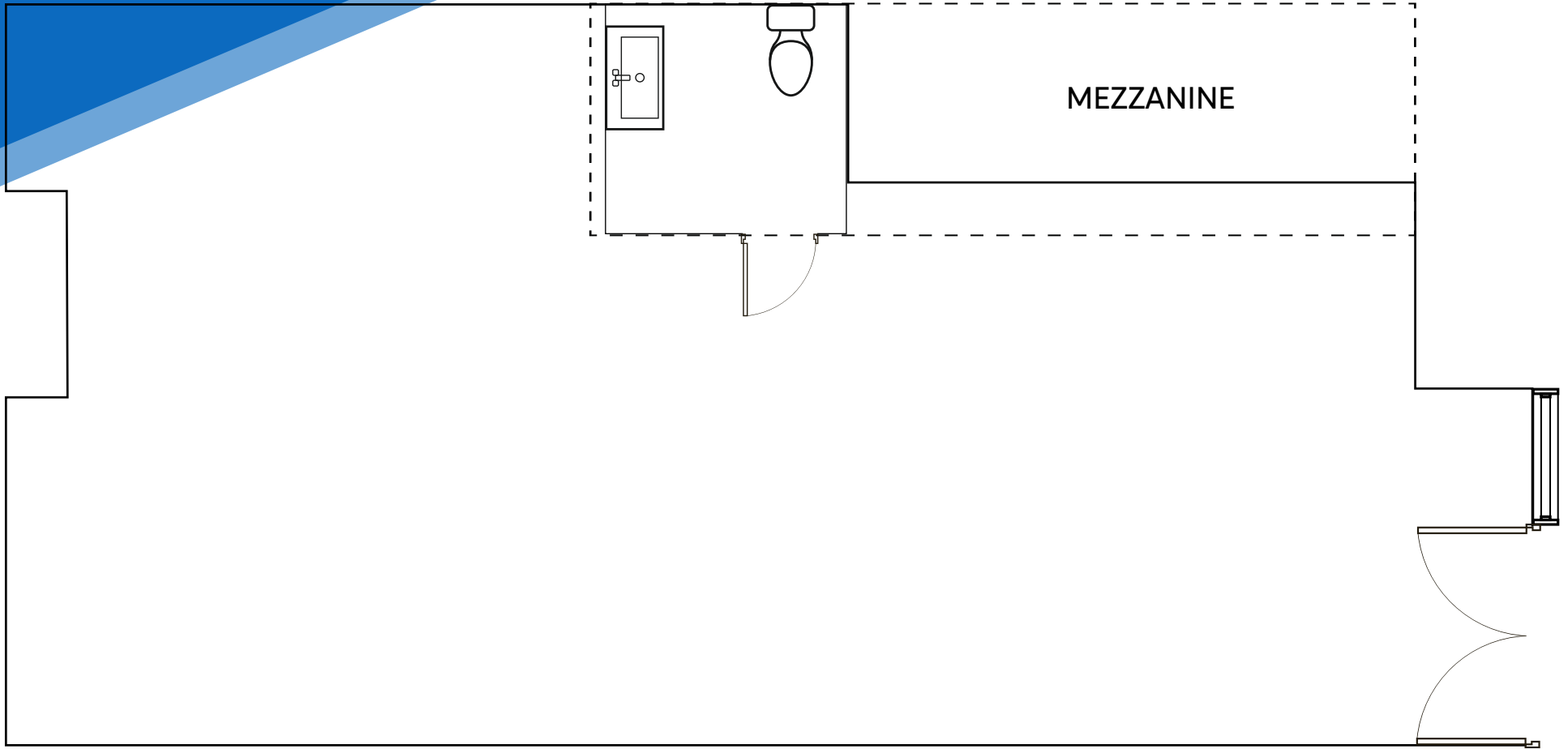
All information supplied is from sources deemed reliable and is furnished subject to errors, omissions, modifications, removal of the listing from sale or lease, and to any listing conditions, including the rates and manner of payment of commissions for particular offerings imposed by Meridian Capital Group. This information may include estimates and projections prepared by Meridian Capital Group with respect to future events, and these future events may or may not actually occur. Such estimates and projections reflect various assumptions concerning anticipated results. While Meridian Capital Group believes these assumptions are reasonable, there can be no assurance that any of these estimates and projections will be correct. Therefore, actual results may vary materially from these estimates and projections. Any square footage dimensions set forth are approximate.

106 READE STREET

TRIBECA, NYC | Between Broadway and Church Street

RETAIL FOR LEASE

FLOOR PLAN



JAMES FAMULARO

President  
646.658.7373  
jfamularo@meridiancapital.com

BOBBY ORTENSE

Director  
212.468.5953  
bortense@meridiancapital.com



**MERIDIAN**  
RETAIL LEASING

All information supplied is from sources deemed reliable and is furnished subject to errors, omissions, modifications, removal of the listing from sale or lease, and to any listing conditions, including the rates and manner of payment of commissions for particular offerings imposed by Meridian Capital Group. This information may include estimates and projections prepared by Meridian Capital Group with respect to future events, and these future events may or may not actually occur. Such estimates and projections reflect various assumptions concerning anticipated results. While Meridian Capital Group believes these assumptions are reasonable, there can be no assurance that any of these estimates and projections will be correct. Therefore, actual results may vary materially from these estimates and projections. Any square footage dimensions set forth are approximate.

106 READE STREET

TRIBECA, NYC | Between Broadway and Church Street

RETAIL FOR LEASE

**THOMAS STREET**

- FRANK DARLING
- Sally Hayes Permanent Makeup
- elic
- APOTHECARY GROUP
- Ciel Rouge Restaurant
- EDWARD'S MAX RESTAURANT
- TRIBECA WINE MERCHANTS
- Sushi of GMAI
- WEATHER UP
- THE ODEON
- COCO GRILL VICTORIA
- TINY'S Spirital
- THE BAR UPSTAIRS
- Ken-Zen Institute
- MADE IN NYC
- M C Choi French Restaurant
- MADISON REED
- Taste of Art
- LaserAway
- Tribeca Green Cleaners
- GLOWBAR
- TAKAHACHI
- FONDA
- Real Pilates
- NYPD
- F45 TRAINING
- ATAMI
- DUA by i

**DUANE STREET**

- Auno Tribeca
- Eight Sleep
- HILL SHOE COMPANY OF PHILADELPHIA
- Duane Street Hotel
- ONDA
- BOOKEO DEMO
- BLUESTONE LANE
- pure barre
- SUGARED + BRONZED
- Spotlight Kids NY
- plump HEYDAY
- NISH NUSH
- TRINITY BOJING CLUB NYC
- Everything
- BURRITO MARIACHI
- Akimoto Sushi
- Sheezan Restaurant
- Fresh Curry
- Bon Courage
- Balcony Cafe
- COL
- 1803
- MODERN MARTIAL ARTS

**READE STREET**

- JACK'S STIR BREW COFFEE est. NYC 2003
- READE STREET DIBBY BAR 135
- ITCH LAB
- 16
- Cajun Chicken Kitchen
- Diy Smoothies
- Bombay Tikka Masala
- ZUCKER'S BAGELS & SMOKED FISH
- MEDRITE URGENT CARE
- Little More
- THE Frederick HOTEL
- STARBUCKS
- PRIMO'S
- swaetgreen
- IR Sushi
- MAYWEATHER BOXING-FITNESS
- GREENWICH ST JEWELERS since 1976
- PALETTE NAILS STUDIO
- City Hall Wines & Spirits
- Unique Shape Threading Salon Inc
- Cozy Cuts And Nails
- Chun Yang Tea Tribeca
- Little Italy Pizza
- Tribeca Cleaners
- HUNGRY GHOST COFFEE
- V.I.P. N
- LOT LESS
- SUBWAY
- EUROPEAN WAX CENTER
- CITY

NEIGHBORS

JAMES FAMULARO

President  
646.658.7373  
jfamularo@meridiancapital.com

BOBBY ORTENSE

Director  
212.468.5953  
bortense@meridiancapital.com



MERIDIAN RETAIL LEASING

All information supplied is from sources deemed reliable and is furnished subject to errors, omissions, modifications, removal of the listing from sale or lease, and to any listing conditions, including the rates and manner of payment of commissions for particular offerings imposed by Meridian Capital Group. This information may include estimates and projections prepared by Meridian Capital Group with respect to future events, and these future events may or may not actually occur. Such estimates and projections reflect various assumptions concerning anticipated results. While Meridian Capital Group believes these assumptions are reasonable, there can be no assurance that any of these estimates and projections will be correct. Therefore, actual results may vary materially from these estimates and projections. Any square footage dimensions set forth are approximate.