

10

COMMERCE STREET NEWARK, NEW JERSEY

Corner of Commerce Street & Raymond
Boulevard

RETAIL FOR LEASE



PROPERTY INFORMATION

APPROXIMATE SIZE

Space A: 1,359 SF
Space B: 2,859 SF
Space C: 1,133 SF

ASKING RENT

\$48 PSF

POSSESSION

Immediate

TERM

5-20 Years

FRONTAGE

60 FT Wraparound

COMMENTS

- Brand-new constructed space
- Can be divided
- High foot traffic
- Steps from Military Park

NEIGHBORS

Burlington • Nike • European Wax Center •
Starbucks • Gap • Uncle Willie's • Don Pepe
Restaurant • Zaro's Family Restaurant
• Prudential Center • NJIT • Rutgers
University • Seton Hall Law School

TRANSPORTATION



JAMES FAMULARO

President

ADAM MATLOFF

Senior Director
212.468.5924
amatloff@meridiancapital.com

NATHANIEL ABITBOL

Senior Associate
212.468.5949
nabitbol@meridiancapital.com

ALLEN VILLAFRANCA

Associate
212.468.5989
avillafranca@meridiancapital.com



MERIDIAN
RETAIL LEASING

All information supplied is from sources deemed reliable and is furnished subject to errors, omissions, modifications, removal of the listing from sale or lease, and to any listing conditions, including the rates and manner of payment of commissions for particular offerings imposed by Meridian Capital Group. This information may include estimates and projections prepared by Meridian Capital Group with respect to future events, and these future events may or may not actually occur. Such estimates and projections reflect various assumptions concerning anticipated results. While Meridian Capital Group believes these assumptions are reasonable, there can be no assurance that any of these estimates and projections will be correct. Therefore, actual results may vary materially from these estimates and projections. Any square footage dimensions set forth are approximate.

10 COMMERCE STREET

NEWARK, NEW JERSEY | Corner of Commerce Street and Raymond Boulevard

RETAIL FOR LEASE

INTERIOR RENDERINGS



JAMES FAMULARO
President

ADAM MATLOFF
Senior Director
212.468.5924
amatloff@meridiancapital.com

NATHANIEL ABITBOL
Senior Associate
212.468.5949
nabitbol@meridiancapital.com

ALLEN VILLAFRANCA
Associate
212.468.5989
avillafranca@meridiancapital.com



MERIDIAN
RETAIL LEASING

All information supplied is from sources deemed reliable and is furnished subject to errors, omissions, modifications, removal of the listing from sale or lease, and to any listing conditions, including the rates and manner of payment of commissions for particular offerings imposed by Meridian Capital Group. This information may include estimates and projections prepared by Meridian Capital Group with respect to future events, and these future events may or may not actually occur. Such estimates and projections reflect various assumptions concerning anticipated results. While Meridian Capital Group believes these assumptions are reasonable, there can be no assurance that any of these estimates and projections will be correct. Therefore, actual results may vary materially from these estimates and projections. Any square footage dimensions set forth are approximate.

10 COMMERCE STREET

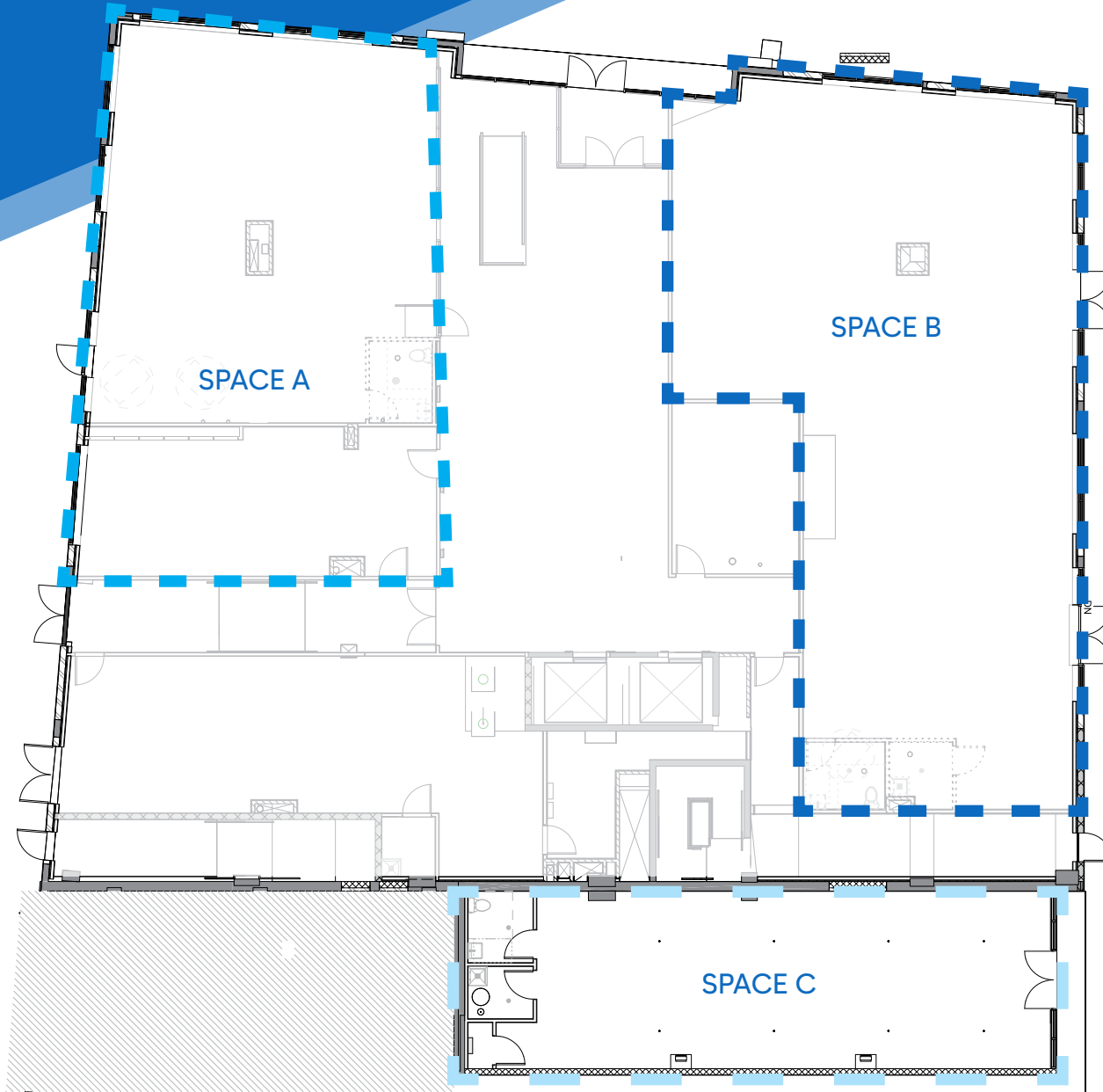
NEWARK, NEW JERSEY | Corner of Commerce Street and Raymond Boulevard

RETAIL FOR LEASE

FLOOR PLAN

COMMERCE STREET

RAYMOND STREET



JAMES FAMULARO
President

ADAM MATLOFF
Senior Director
212.468.5924
amatloff@meridiancapital.com

NATHANIEL ABITBOL
Senior Associate
212.468.5949
nabitbol@meridiancapital.com

ALLEN VILLAFRANCA
Associate
212.468.5989
avillafranca@meridiancapital.com



MERIDIAN
RETAIL LEASING

All information supplied is from sources deemed reliable and is furnished subject to errors, omissions, modifications, removal of the listing from sale or lease, and to any listing conditions, including the rates and manner of payment of commissions for particular offerings imposed by Meridian Capital Group. This information may include estimates and projections prepared by Meridian Capital Group with respect to future events, and these future events may or may not actually occur. Such estimates and projections reflect various assumptions concerning anticipated results. While Meridian Capital Group believes these assumptions are reasonable, there can be no assurance that any of these estimates and projections will be correct. Therefore, actual results may vary materially from these estimates and projections. Any square footage dimensions set forth are approximate.

10 COMMERCE STREET

NEWARK, NEW JERSEY | Corner of Commerce Street and Raymond Boulevard

RETAIL FOR LEASE



NEIGHBORS

JAMES FAMULARO
President

ADAM MATLOFF
Senior Director
212.468.5924
amatloff@meridiancapital.com

NATHANIEL ABITBOL
Senior Associate
212.468.5949
nabitbol@meridiancapital.com

ALLEN VILLAFRANCA
Associate
212.468.5989
avillafranca@meridiancapital.com



MERIDIAN
RETAIL LEASING

All information supplied is from sources deemed reliable and is furnished subject to errors, omissions, modifications, removal of the listing from sale or lease, and to any listing conditions, including the rates and manner of payment of commissions for particular offerings imposed by Meridian Capital Group. This information may include estimates and projections prepared by Meridian Capital Group with respect to future events, and these future events may or may not actually occur. Such estimates and projections reflect various assumptions concerning anticipated results. While Meridian Capital Group believes these assumptions are reasonable, there can be no assurance that any of these estimates and projections will be correct. Therefore, actual results may vary materially from these estimates and projections. Any square footage dimensions set forth are approximate.