

# 721

## FLUSHING AVENUE

BUSHWICK, BROOKLYN

Between Broadway & Thornton Street

OFFICE/MEDICAL FOR LEASE

### APPROXIMATE SIZE

Ground Floor: 1,450 SF  
2<sup>nd</sup> Floor: 3,500 SF  
Lower Level: 2,500 SF  
Total: 7,450 SF

### POSSESSION

Immediate

### ASKING RENT

Ground Floor: \$8,000/Month  
2<sup>nd</sup> Floor: \$10,000/Month  
Lower Level: \$4,000/Month  
**Entire Space: \$19,500/Month**

### TERM

Negotiable

### COMMENTS

- Elevator access
- Multiple means of egress
- Built-out medical facility on the ground floor and lower level
- High foot/car traffic
- Across from the Woodhull Hospital

### NEIGHBORS

Woodhull Hospital • Mirakuya • Rivera's Bagel Café • Frank's Coffee Shop • Burger King • Sonic • Popeyes • Wallgreens • Footlocker • Taco Bell

### TRANSPORTATION



### JAMES FAMULARO

President

### JOSEPH HARARY

Director  
212.468.5978

jharary@meridiancapital.com

### SHAYA KATZ

Associate  
212.468.5991

shaya.katz@meridiancapital.com



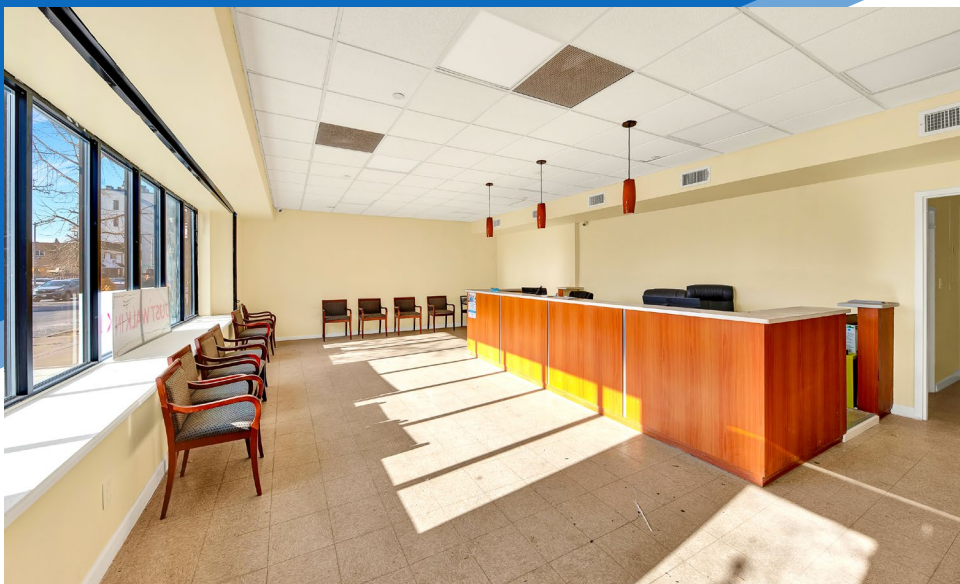
**MERIDIAN**  
RETAIL LEASING

All information supplied is from sources deemed reliable and is furnished subject to errors, omissions, modifications, removal of the listing from sale or lease, and to any listing conditions, including the rates and manner of payment of commissions for particular offerings imposed by Meridian Capital Group. This information may include estimates and projections prepared by Meridian Capital Group with respect to future events, and these future events may or may not actually occur. Such estimates and projections reflect various assumptions concerning anticipated results. While Meridian Capital Group believes these assumptions are reasonable, there can be no assurance that any of these estimates and projections will be correct. Therefore, actual results may vary materially from these estimates and projections. Any square footage dimensions set forth are approximate.



721 FLUSHING AVENUE  
BUSHWICK, BROOKLYN | Between Broadway and Thornton Street

OFFICE/MEDICAL FOR LEASE



INTERIOR | GROUND FLOOR

JAMES FAMULARO  
President

JOSEPH HARARY  
Director  
212.468.5978  
jharary@meridiancapital.com

SHAYA KATZ  
Associate  
212.468.5991  
shaya.katz@meridiancapital.com



**MERIDIAN**  
RETAIL LEASING

All information supplied is from sources deemed reliable and is furnished subject to errors, omissions, modifications, removal of the listing from sale or lease, and to any listing conditions, including the rates and manner of payment of commissions for particular offerings imposed by Meridian Capital Group. This information may include estimates and projections prepared by Meridian Capital Group with respect to future events, and these future events may or may not actually occur. Such estimates and projections reflect various assumptions concerning anticipated results. While Meridian Capital Group believes these assumptions are reasonable, there can be no assurance that any of these estimates and projections will be correct. Therefore, actual results may vary materially from these estimates and projections. Any square footage dimensions set forth are approximate.



721 FLUSHING AVENUE  
BUSHWICK, BROOKLYN | Between Broadway and Thornton Street

OFFICE/MEDICAL FOR LEASE



INTERIOR | SECOND FLOOR

JAMES FAMULARO  
President

JOSEPH HARARY  
Director  
212.468.5978  
jharary@meridiancapital.com

SHAYA KATZ  
Associate  
212.468.5991  
shaya.katz@meridiancapital.com



**MERIDIAN**  
RETAIL LEASING

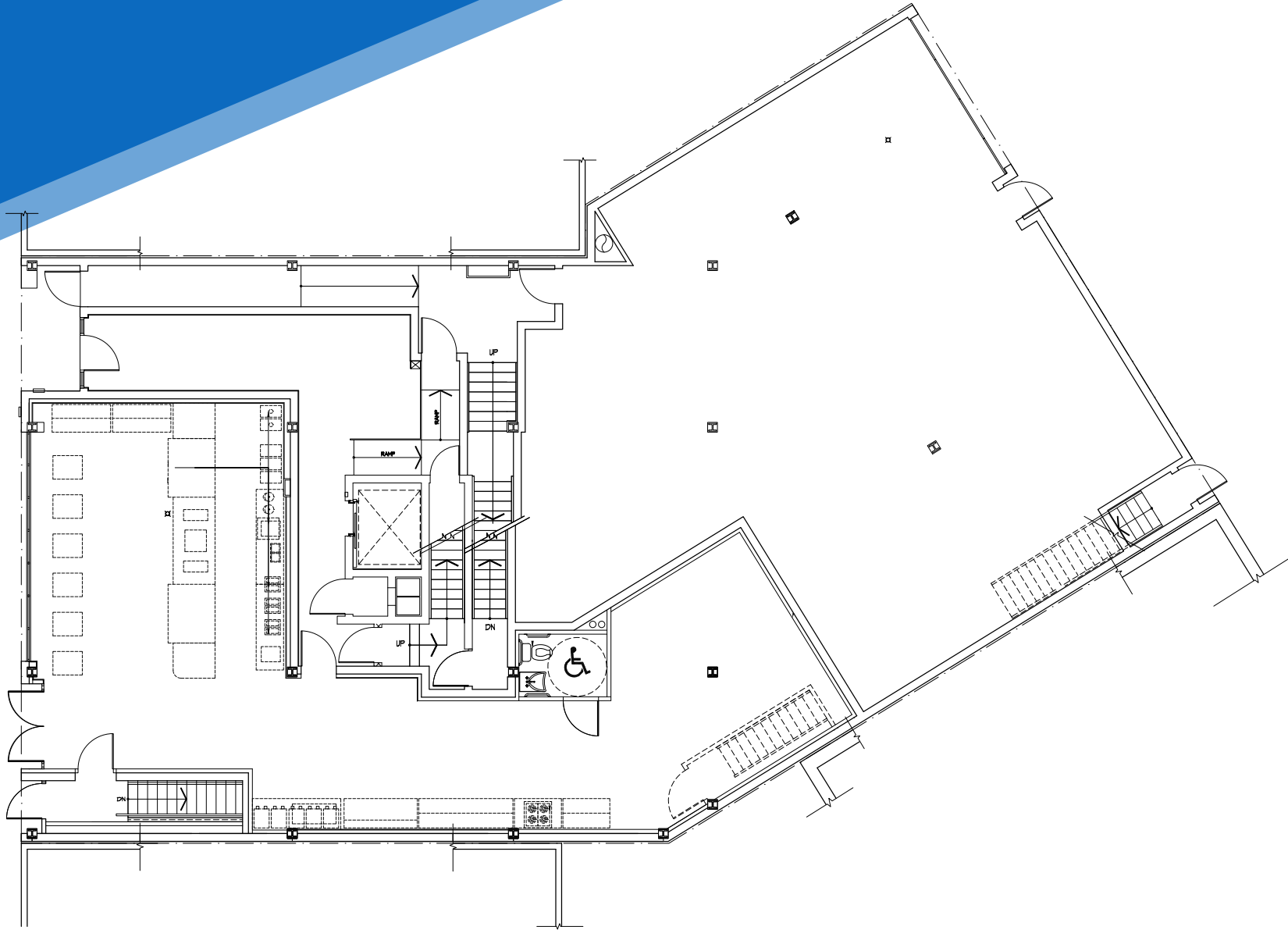
All information supplied is from sources deemed reliable and is furnished subject to errors, omissions, modifications, removal of the listing from sale or lease, and to any listing conditions, including the rates and manner of payment of commissions for particular offerings imposed by Meridian Capital Group. This information may include estimates and projections prepared by Meridian Capital Group with respect to future events, and these future events may or may not actually occur. Such estimates and projections reflect various assumptions concerning anticipated results. While Meridian Capital Group believes these assumptions are reasonable, there can be no assurance that any of these estimates and projections will be correct. Therefore, actual results may vary materially from these estimates and projections. Any square footage dimensions set forth are approximate.

## 721 FLUSHING AVENUE

BUSHWICK, BROOKLYN | Between Broadway and Thornton Street

OFFICE/MEDICAL FOR LEASE

FLOOR PLAN | GROUND FLOOR



JAMES FAMULARO  
President

JOSEPH HARARY  
Director  
212.468.5978  
jharary@meridiancapital.com

SHAYA KATZ  
Associate  
212.468.5991  
shaya.katz@meridiancapital.com



**MERIDIAN**  
RETAIL LEASING

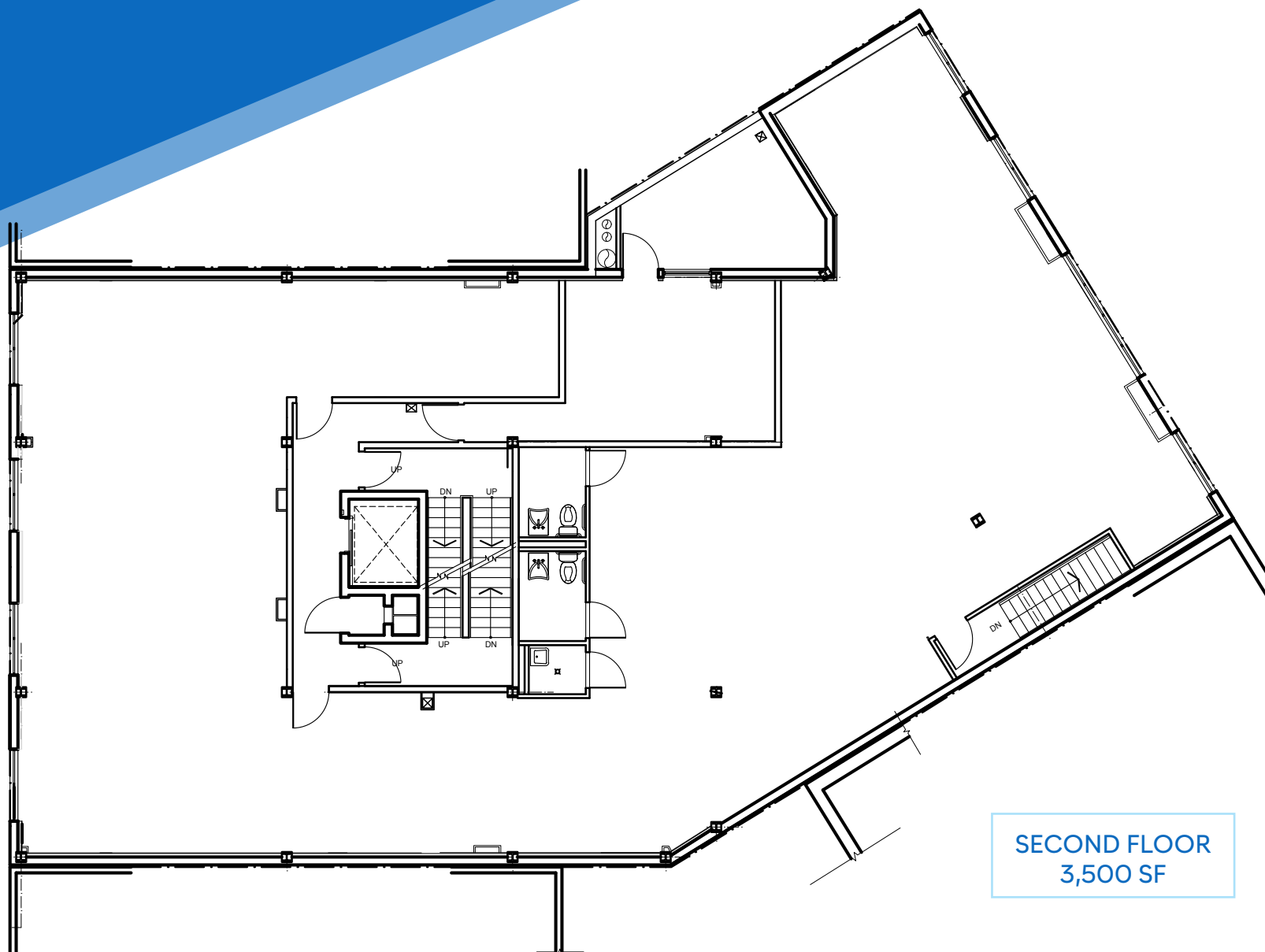
All information supplied is from sources deemed reliable and is furnished subject to errors, omissions, modifications, removal of the listing from sale or lease, and to any listing conditions, including the rates and manner of payment of commissions for particular offerings imposed by Meridian Capital Group. This information may include estimates and projections prepared by Meridian Capital Group with respect to future events, and these future events may or may not actually occur. Such estimates and projections reflect various assumptions concerning anticipated results. While Meridian Capital Group believes these assumptions are reasonable, there can be no assurance that any of these estimates and projections will be correct. Therefore, actual results may vary materially from these estimates and projections. Any square footage dimensions set forth are approximate.



721 FLUSHING AVENUE  
BUSHWICK, BROOKLYN | Between Broadway and Thornton Street

OFFICE/MEDICAL FOR LEASE

FLOOR PLAN | SECOND FLOOR



SECOND FLOOR  
3,500 SF

JAMES FAMULARO  
President

JOSEPH HARARY  
Director  
212.468.5978  
jharary@meridiancapital.com

SHAYA KATZ  
Associate  
212.468.5991  
shaya.katz@meridiancapital.com



**MERIDIAN**  
RETAIL LEASING

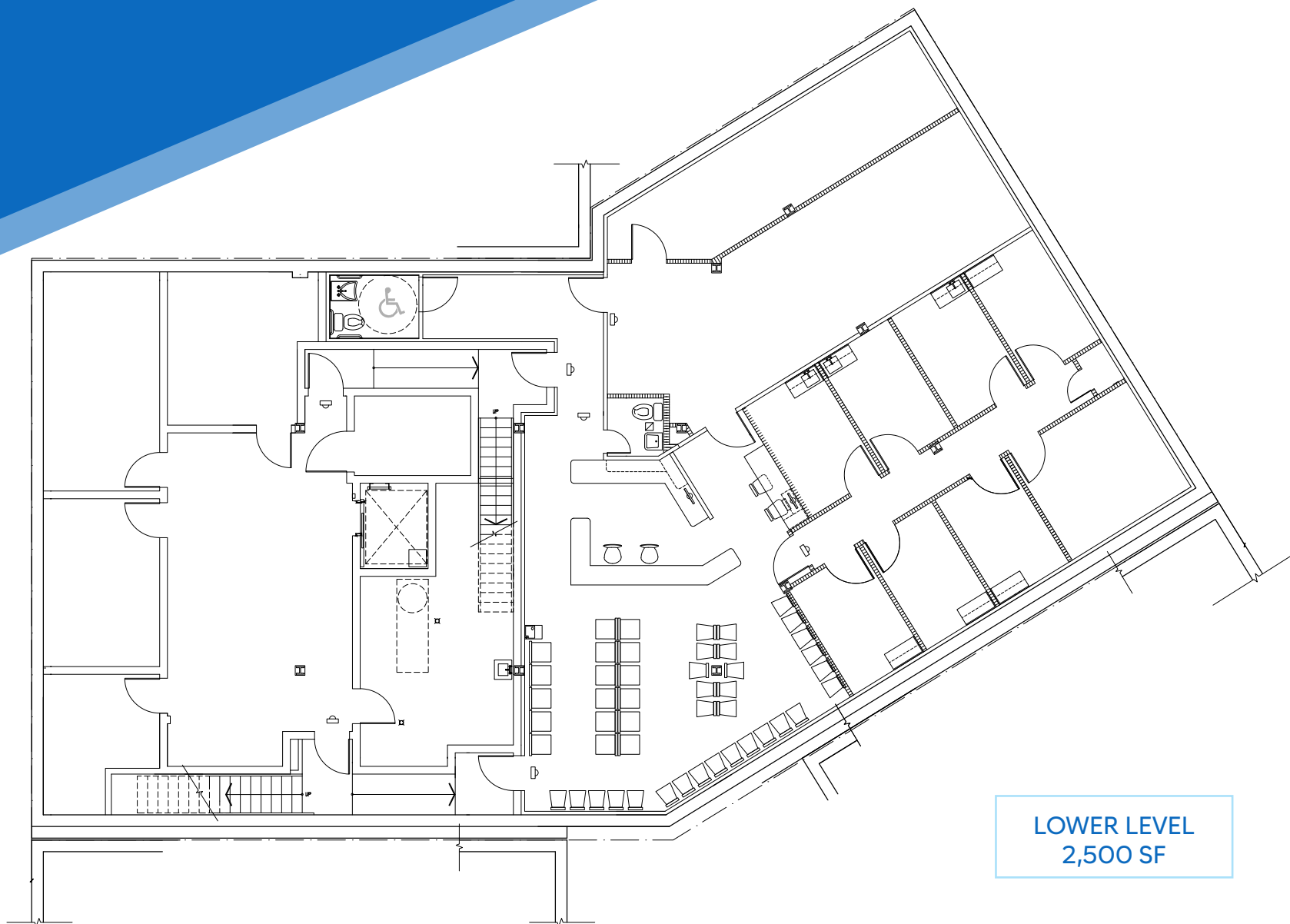
All information supplied is from sources deemed reliable and is furnished subject to errors, omissions, modifications, removal of the listing from sale or lease, and to any listing conditions, including the rates and manner of payment of commissions for particular offerings imposed by Meridian Capital Group. This information may include estimates and projections prepared by Meridian Capital Group with respect to future events, and these future events may or may not actually occur. Such estimates and projections reflect various assumptions concerning anticipated results. While Meridian Capital Group believes these assumptions are reasonable, there can be no assurance that any of these estimates and projections will be correct. Therefore, actual results may vary materially from these estimates and projections. Any square footage dimensions set forth are approximate.



721 FLUSHING AVENUE  
BUSHWICK, BROOKLYN | Between Broadway and Thornton Street

OFFICE/MEDICAL FOR LEASE

FLOOR PLAN | LOWER LEVEL



LOWER LEVEL  
2,500 SF

JAMES FAMULARO  
President

JOSEPH HARARY  
Director  
212.468.5978  
jharary@meridiancapital.com

SHAYA KATZ  
Associate  
212.468.5991  
shaya.katz@meridiancapital.com



**MERIDIAN**  
RETAIL LEASING

All information supplied is from sources deemed reliable and is furnished subject to errors, omissions, modifications, removal of the listing from sale or lease, and to any listing conditions, including the rates and manner of payment of commissions for particular offerings imposed by Meridian Capital Group. This information may include estimates and projections prepared by Meridian Capital Group with respect to future events, and these future events may or may not actually occur. Such estimates and projections reflect various assumptions concerning anticipated results. While Meridian Capital Group believes these assumptions are reasonable, there can be no assurance that any of these estimates and projections will be correct. Therefore, actual results may vary materially from these estimates and projections. Any square footage dimensions set forth are approximate.



## 721 FLUSHING AVENUE

BUSHWICK, BROOKLYN | Between Broadway and Thornton Street

OFFICE/MEDICAL FOR LEASE



NEIGHBORS

**JAMES FAMULARO**  
President

**JOSEPH HARARY**  
Director  
212.468.5978  
jharary@meridiancapital.com

**SHAYA KATZ**  
Associate  
212.468.5991  
shaya.katz@meridiancapital.com



**MERIDIAN**  
RETAIL LEASING

All information supplied is from sources deemed reliable and is furnished subject to errors, omissions, modifications, removal of the listing from sale or lease, and to any listing conditions, including the rates and manner of payment of commissions for particular offerings imposed by Meridian Capital Group. This information may include estimates and projections prepared by Meridian Capital Group with respect to future events, and these future events may or may not actually occur. Such estimates and projections reflect various assumptions concerning anticipated results. While Meridian Capital Group believes these assumptions are reasonable, there can be no assurance that any of these estimates and projections will be correct. Therefore, actual results may vary materially from these estimates and projections. Any square footage dimensions set forth are approximate.