

69

EAST 125TH STREET EAST HARLEM, NYC

Between Park & Madison Avenues

RETAIL FOR LEASE

APPROXIMATE SIZE

3,531 SF

ASKING RENT

~~\$20,000/Month~~ Reduced
\$18,000/Month

POSSESSION

Immediate

TERM

5-15 Years

FRONTAGE

26 FT

COMMENTS

- Beautiful well-kept space directly on 125th Street
- At the base of a 75-unit apartment building
- All quality non-food uses considered
- Excellent retail, fitness, medical, or education opportunity in Central Harlem

NEIGHBORS

TJ Maxx • Nike • Shake Shack • Harlem Children's Zone • Baskin Robbins • Dunkin' • Harlem Nail Bar • Edible Arrangements

TRANSPORTATION

2 3 4 5 6



JAMES FAMULARO
President

DANE HARLOWE
Director
212.468.5966
dharlowe@meridiancapital.com

NOAM AZIZ
Director
212.468.5984
naziz@meridiancapital.com

NATHAN SHABOT
Associate
212.468.5933
nshabot@meridiancapital.com

CORY RYWALT
Associate
212.468.5973
crywalt@meridiancapital.com

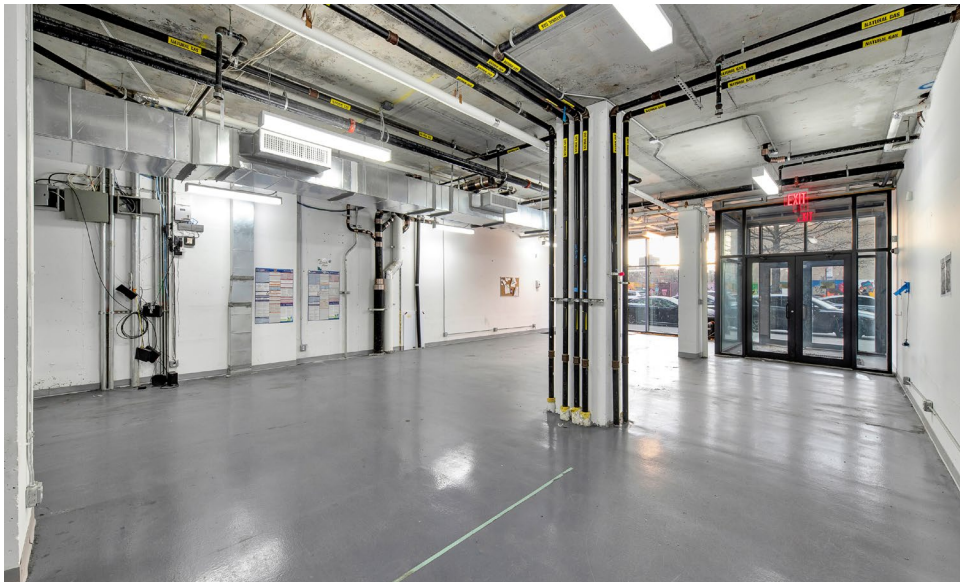
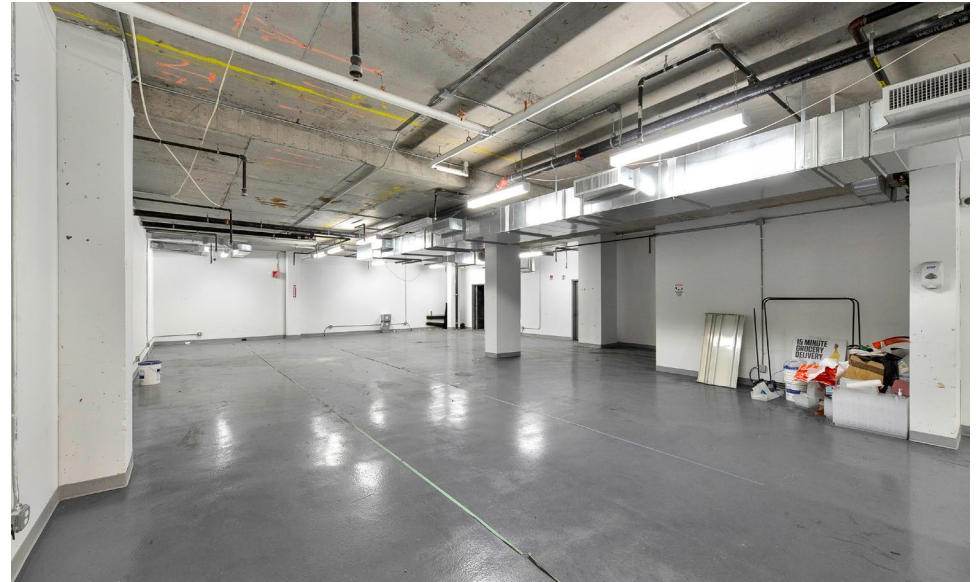
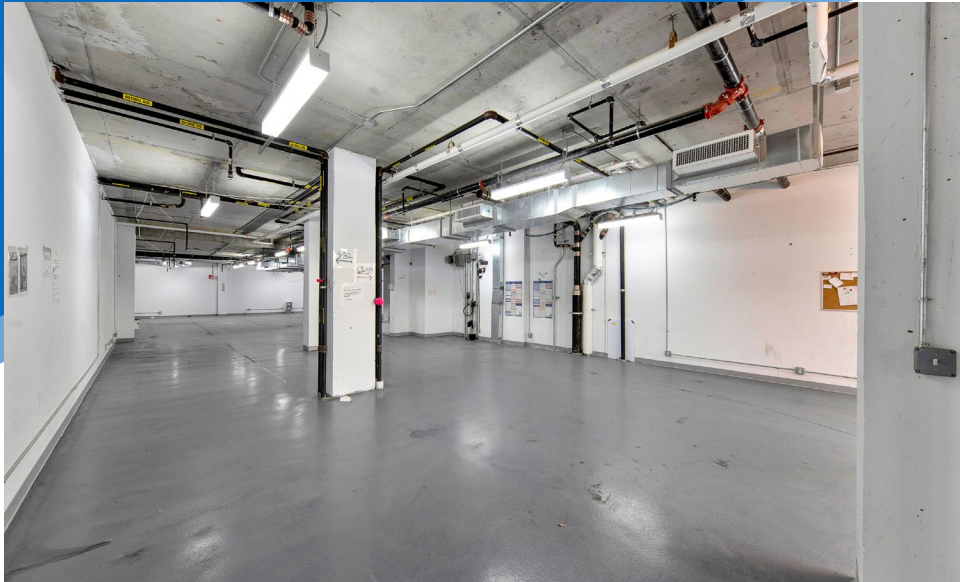


All information supplied is from sources deemed reliable and is furnished subject to errors, omissions, modifications, removal of the listing from sale or lease, and to any listing conditions, including the rates and manner of payment of commissions for particular offerings imposed by Meridian Capital Group. This information may include estimates and projections prepared by Meridian Capital Group with respect to future events, and these future events may or may not actually occur. Such estimates and projections reflect various assumptions concerning anticipated results. While Meridian Capital Group believes these assumptions are reasonable, there can be no assurance that any of these estimates and projections will be correct. Therefore, actual results may vary materially from these estimates and projections. Any square footage dimensions set forth are approximate.

69 EAST 125TH STREET

EAST HARLEM, NYC | Between Park and Madison Avenues

RETAIL FOR LEASE



INTERIOR

JAMES FAMULARO
President

DANE HARLOWE
Director
212.468.5966
dharlowe@meridiancapital.com

NOAM AZIZ
Director
212.468.5984
naziz@meridiancapital.com

NATHAN SHABOT
Associate
212.468.5933
nshabot@meridiancapital.com

CORY RYWALT
Associate
212.468.5973
crywalt@meridiancapital.com

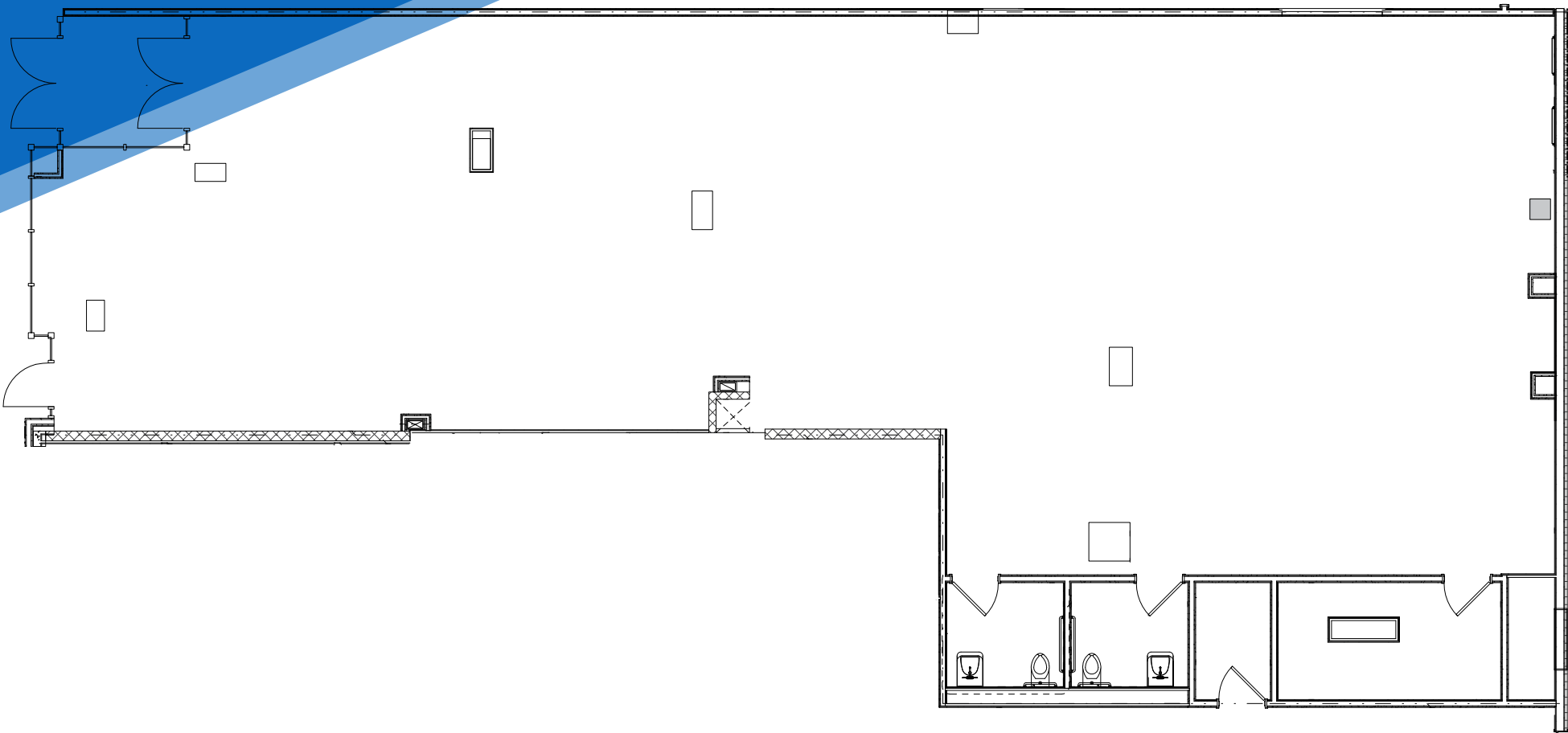


All information supplied is from sources deemed reliable and is furnished subject to errors, omissions, modifications, removal of the listing from sale or lease, and to any listing conditions, including the rates and manner of payment of commissions for particular offerings imposed by Meridian Capital Group. This information may include estimates and projections prepared by Meridian Capital Group with respect to future events, and these future events may or may not actually occur. Such estimates and projections reflect various assumptions concerning anticipated results. While Meridian Capital Group believes these assumptions are reasonable, there can be no assurance that any of these estimates and projections will be correct. Therefore, actual results may vary materially from these estimates and projections. Any square footage dimensions set forth are approximate.

69 EAST 125TH STREET
EAST HARLEM, NYC | Between Park and Madison Avenues

RETAIL FOR LEASE

FLOOR PLAN



JAMES FAMULARO
President

DANE HARLOWE
Director
212.468.5966
dharlowe@meridiancapital.com

NOAM AZIZ
Director
212.468.5984
naziz@meridiancapital.com

NATHAN SHABOT
Associate
212.468.5933
nshabot@meridiancapital.com

CORY RYWALT
Associate
212.468.5973
crywalt@meridiancapital.com



MERIDIAN
RETAIL LEASING

All information supplied is from sources deemed reliable and is furnished subject to errors, omissions, modifications, removal of the listing from sale or lease, and to any listing conditions, including the rates and manner of payment of commissions for particular offerings imposed by Meridian Capital Group. This information may include estimates and projections prepared by Meridian Capital Group with respect to future events, and these future events may or may not actually occur. Such estimates and projections reflect various assumptions concerning anticipated results. While Meridian Capital Group believes these assumptions are reasonable, there can be no assurance that any of these estimates and projections will be correct. Therefore, actual results may vary materially from these estimates and projections. Any square footage dimensions set forth are approximate.

69 EAST 125TH STREET

EAST HARLEM, NYC | Between Park and Madison Avenues

RETAIL FOR LEASE



NEIGHBORS

JAMES FAMULARO
President

DANE HARLOWE
Director
212.468.5966
dharlowe@meridiancapital.com

NOAM AZIZ
Director
212.468.5984
naziz@meridiancapital.com

NATHAN SHABOT
Associate
212.468.5933
nshabot@meridiancapital.com

CORY RYWALT
Associate
212.468.5973
crywalt@meridiancapital.com

MERIDIAN
RETAIL LEASING

All information supplied is from sources deemed reliable and is furnished subject to errors, omissions, modifications, removal of the listing from sale or lease, and to any listing conditions, including the rates and manner of payment of commissions for particular offerings imposed by Meridian Capital Group. This information may include estimates and projections prepared by Meridian Capital Group with respect to future events, and these future events may or may not actually occur. Such estimates and projections reflect various assumptions concerning anticipated results. While Meridian Capital Group believes these assumptions are reasonable, there can be no assurance that any of these estimates and projections will be correct. Therefore, actual results may vary materially from these estimates and projections. Any square footage dimensions set forth are approximate.