

# 36-14

## DITMARS BOULEVARD

ASTORIA, QUEENS

Between 36<sup>th</sup> & 37<sup>th</sup> Streets

RETAIL/RESTAURANT FOR LEASE



### APPROXIMATE SIZE

Ground Floor: 1,200 SF

Basement: 1,200 SF

### ASKING RENT

\$11,000/Month

### POSSESSION

Immediate

### TERM

10+ Years

### FRONTAGE

20 FT

### COMMENTS

- Column-free retail space
- Previously operated as a nail salon
- Located in the heart of Astoria on a heavy foot traffic corridor
- Close proximity to all public transit
- All quality uses accepted, including food

### NEIGHBORS

Martha's Country Bakery • The Pomeroy • Taverna Kyclades • McDonald's • Queen's Room • TRU Astoria • HinoMaru Ramen • IBN Hamido Seafood • T.J. Maxx • The Bonnie • Paris Baguette • Orange Theory Fitness • TRUVA Café & Grill • Trade Fair Supermarket • Krispy Kreme • Jack Jones Gastropub

### TRANSPORTATION

N W

Q69 Q101

### JAMES FAMULARO

President

### GARRETT KELLY

Director

212.468.5939

gkelly@meridiancapital.com



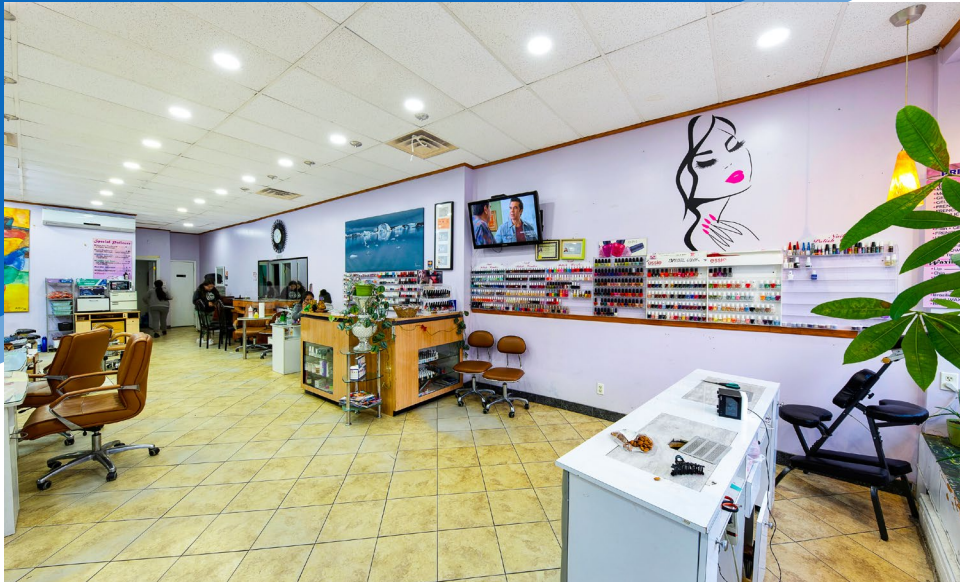
**MERIDIAN**  
RETAIL LEASING

All information supplied is from sources deemed reliable and is furnished subject to errors, omissions, modifications, removal of the listing from sale or lease, and to any listing conditions, including the rates and manner of payment of commissions for particular offerings imposed by Meridian Capital Group. This information may include estimates and projections prepared by Meridian Capital Group with respect to future events, and these future events may or may not actually occur. Such estimates and projections reflect various assumptions concerning anticipated results. While Meridian Capital Group believes these assumptions are reasonable, there can be no assurance that any of these estimates and projections will be correct. Therefore, actual results may vary materially from these estimates and projections. Any square footage dimensions set forth are approximate.

# 36-14 DITMARS BOULEVARD

ASTORIA, QUEENS | Between 36<sup>th</sup> and 37<sup>th</sup> Streets

## RETAIL/RESTAURANT FOR LEASE



INTERIOR

**JAMES FAMULARO**  
President

**GARRETT KELLY**  
Director  
212.468.5939  
gkelly@meridiancapital.com



**MERIDIAN**  
RETAIL LEASING

All information supplied is from sources deemed reliable and is furnished subject to errors, omissions, modifications, removal of the listing from sale or lease, and to any listing conditions, including the rates and manner of payment of commissions for particular offerings imposed by Meridian Capital Group. This information may include estimates and projections prepared by Meridian Capital Group with respect to future events, and these future events may or may not actually occur. Such estimates and projections reflect various assumptions concerning anticipated results. While Meridian Capital Group believes these assumptions are reasonable, there can be no assurance that any of these estimates and projections will be correct. Therefore, actual results may vary materially from these estimates and projections. Any square footage dimensions set forth are approximate.

