

138

BOWERY NOLITA, NYC

Between Broome & Grand Streets

RESTAURANT/RETAIL FOR LEASE

APPROXIMATE SIZE

Ground Floor: 5,956 SF
Mezzanine: 2,380 SF
Lower Level: 3,981 SF

ASKING RENT

Ground Floor: \$90 PSF
Mezzanine: \$66 PSF
Lower Level: \$66 PSF

POSSESSION

Immediate

TERM

10-15 Years

FRONTAGE

50 FT

COMMENTS

- Beautiful white-box space at the base of the 4-star, 88-room 138 Bowery Hotel
- Gas and venting in place
- Great foot traffic with a blend of tourism and surrounding residents
- Logical divisions considered
- Located in the heart of Manhattan's trendiest F&B strip

NEIGHBORS

Moxy Hotel • Silver Lining Lounge • The Highlight Room • Sake No Hana • Loosie's • Prince Tea House • Piacere • Casa Bocado • Wick and Pour • Shoo Shoo Nolita

TRANSPORTATION

B D J Z

JAMES FAMULARO

President
646.658.7373
jfamularo@meridiancapital.com

BOBBY ORTENSE

Director
212.468.5953
bortense@meridiancapital.com

COLE KLEPPINGER

Associate
212.468.5993
ckleppinger@meridiancapital.com



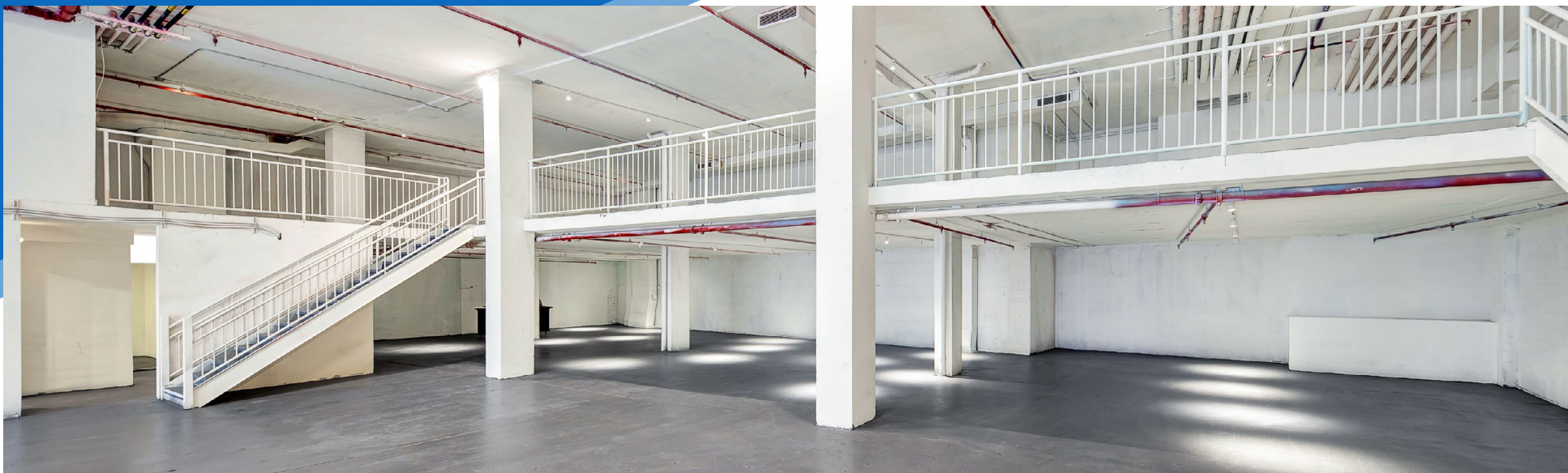
MERIDIAN
RETAIL LEASING

All information supplied is from sources deemed reliable and is furnished subject to errors, omissions, modifications, removal of the listing from sale or lease, and to any listing conditions, including the rates and manner of payment of commissions for particular offerings imposed by Meridian Capital Group. This information may include estimates and projections prepared by Meridian Capital Group with respect to future events, and these future events may or may not actually occur. Such estimates and projections reflect various assumptions concerning anticipated results. While Meridian Capital Group believes these assumptions are reasonable, there can be no assurance that any of these estimates and projections will be correct. Therefore, actual results may vary materially from these estimates and projections. Any square footage dimensions set forth are approximate.

138 BOWERY

NOLITA, NYC | Between Broome and Grand Streets

RESTAURANT/RETAIL FOR LEASE



INTERIOR

JAMES FAMULARO

President
646.658.7373
jfamularo@meridiancapital.com

BOBBY ORTENSE

Director
212.468.5953
bortense@meridiancapital.com

COLE KLEPPINGER

Associate
212.468.5993
ckleppinger@meridiancapital.com



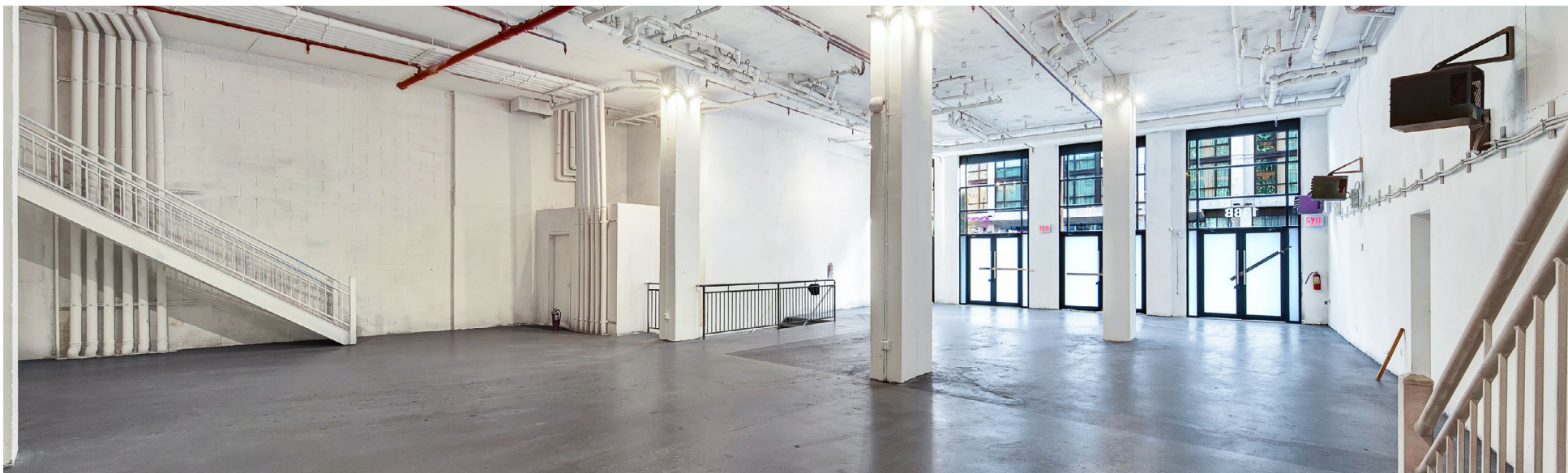
MERIDIAN
RETAIL LEASING

All information supplied is from sources deemed reliable and is furnished subject to errors, omissions, modifications, removal of the listing from sale or lease, and to any listing conditions, including the rates and manner of payment of commissions for particular offerings imposed by Meridian Capital Group. This information may include estimates and projections prepared by Meridian Capital Group with respect to future events, and these future events may or may not actually occur. Such estimates and projections reflect various assumptions concerning anticipated results. While Meridian Capital Group believes these assumptions are reasonable, there can be no assurance that any of these estimates and projections will be correct. Therefore, actual results may vary materially from these estimates and projections. Any square footage dimensions set forth are approximate.

138 BOWERY

NOLITA, NYC | Between Broome and Grand Streets

RESTAURANT/RETAIL FOR LEASE



INTERIOR

JAMES FAMULARO

President
646.658.7373
jfamularo@meridiancapital.com

BOBBY ORTENSE

Director
212.468.5953
bortense@meridiancapital.com

COLE KLEPPINGER

Associate
212.468.5993
ckleppinger@meridiancapital.com



MERIDIAN
RETAIL LEASING

All information supplied is from sources deemed reliable and is furnished subject to errors, omissions, modifications, removal of the listing from sale or lease, and to any listing conditions, including the rates and manner of payment of commissions for particular offerings imposed by Meridian Capital Group. This information may include estimates and projections prepared by Meridian Capital Group with respect to future events, and these future events may or may not actually occur. Such estimates and projections reflect various assumptions concerning anticipated results. While Meridian Capital Group believes these assumptions are reasonable, there can be no assurance that any of these estimates and projections will be correct. Therefore, actual results may vary materially from these estimates and projections. Any square footage dimensions set forth are approximate.

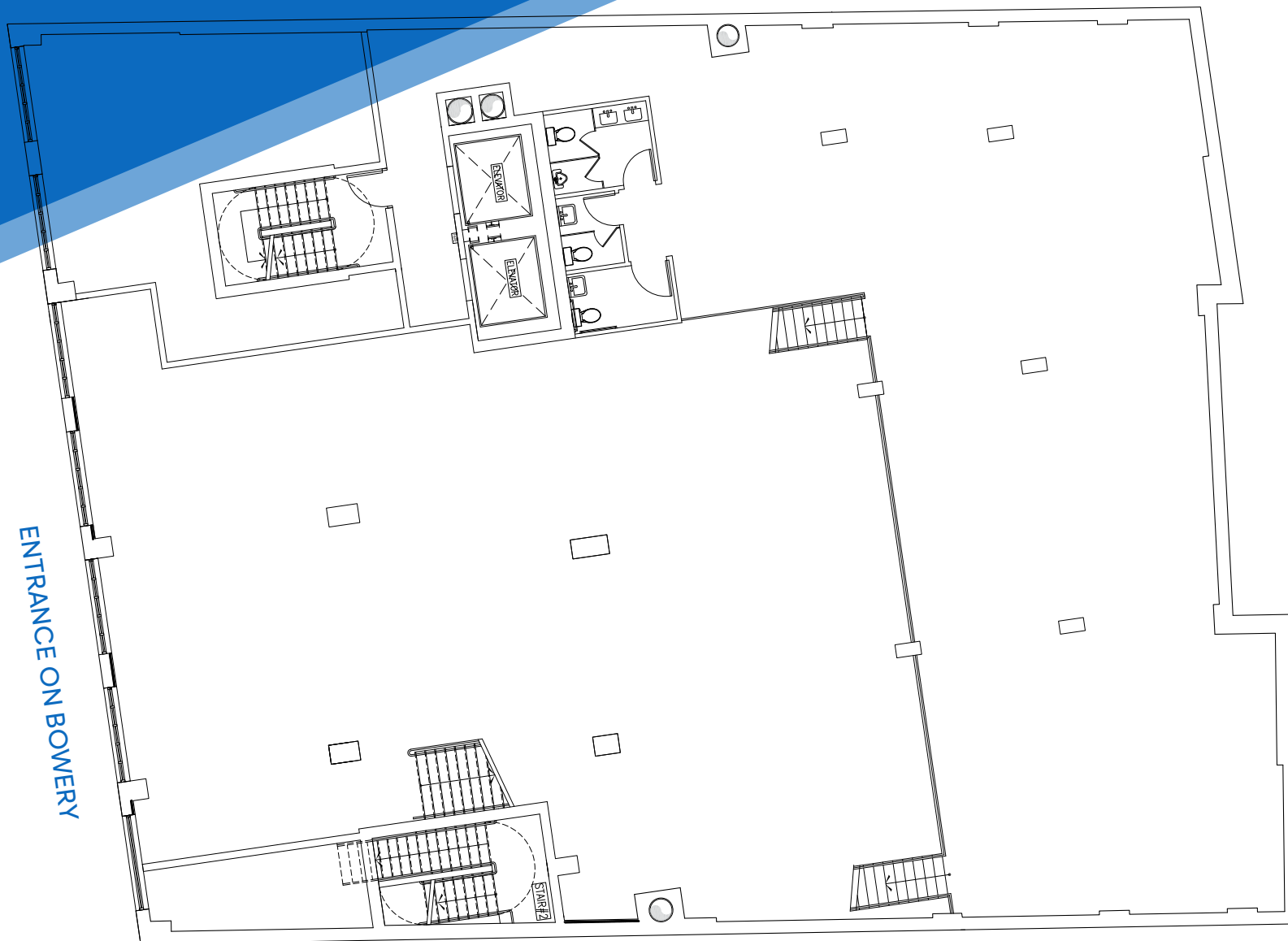
138 BOWERY

NOLITA, NYC | Between Broome and Grand Streets

RESTAURANT/RETAIL FOR LEASE

FLOOR PLAN | GROUND FLOOR

ENTRANCE ON BOWERY



JAMES FAMULARO

President
646.658.7373
jfamularo@meridiancapital.com

BOBBY ORTENSE

Director
212.468.5953
bortense@meridiancapital.com

COLE KLEPPINGER

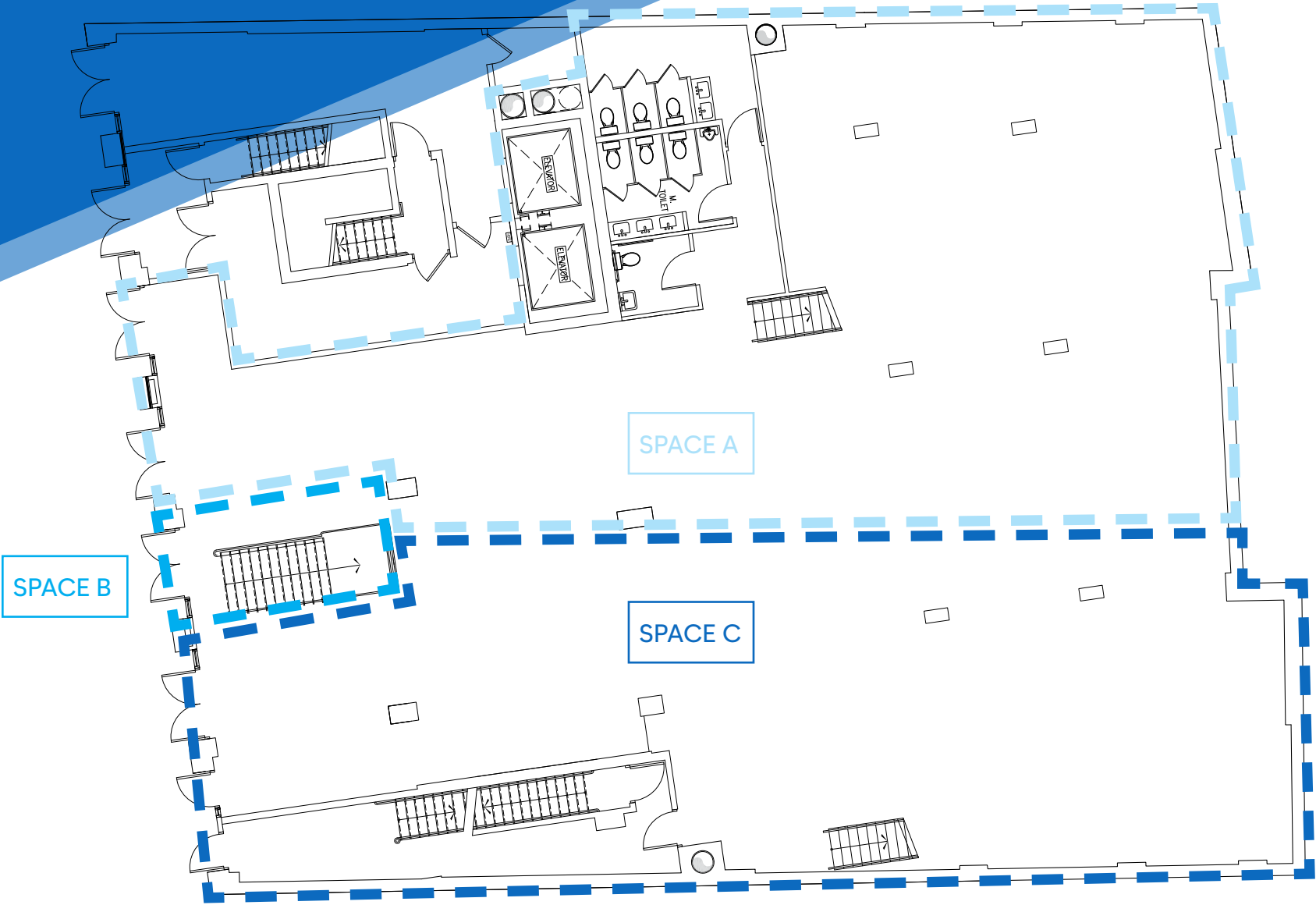
Associate
212.468.5993
ckleppinger@meridiancapital.com



MERIDIAN
RETAIL LEASING

All information supplied is from sources deemed reliable and is furnished subject to errors, omissions, modifications, removal of the listing from sale or lease, and to any listing conditions, including the rates and manner of payment of commissions for particular offerings imposed by Meridian Capital Group. This information may include estimates and projections prepared by Meridian Capital Group with respect to future events, and these future events may or may not actually occur. Such estimates and projections reflect various assumptions concerning anticipated results. While Meridian Capital Group believes these assumptions are reasonable, there can be no assurance that any of these estimates and projections will be correct. Therefore, actual results may vary materially from these estimates and projections. Any square footage dimensions set forth are approximate.

FLOOR PLAN | POSSIBLE DIVISIONS



JAMES FAMULARO

President
646.658.7373
jfamularo@meridiancapital.com

BOBBY ORTENSE

Director
212.468.5953
bortense@meridiancapital.com

COLE KLEPPINGER

Associate
212.468.5993
ckleppinger@meridiancapital.com



MERIDIAN
RETAIL LEASING

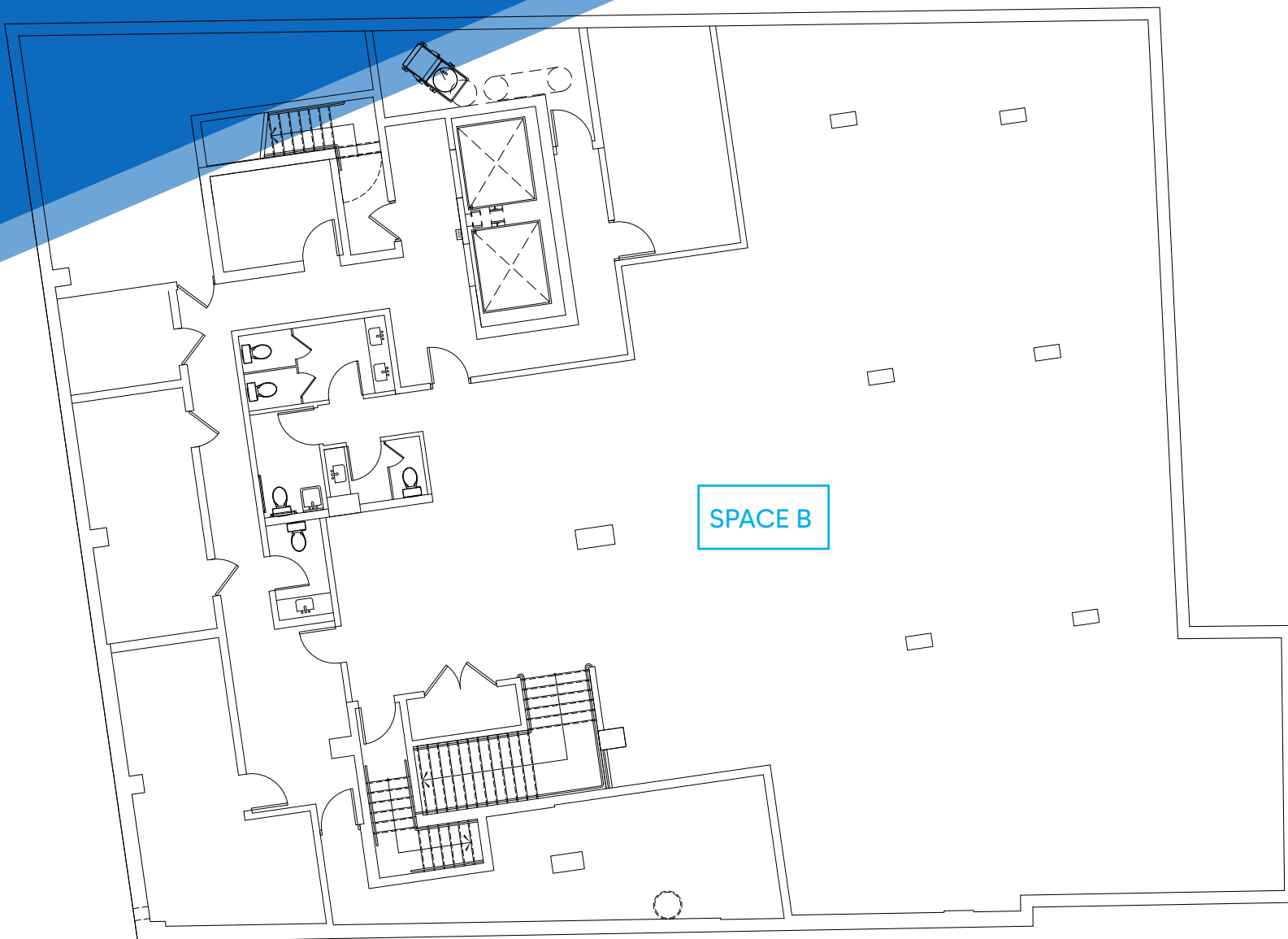
All information supplied is from sources deemed reliable and is furnished subject to errors, omissions, modifications, removal of the listing from sale or lease, and to any listing conditions, including the rates and manner of payment of commissions for particular offerings imposed by Meridian Capital Group. This information may include estimates and projections prepared by Meridian Capital Group with respect to future events, and these future events may or may not actually occur. Such estimates and projections reflect various assumptions concerning anticipated results. While Meridian Capital Group believes these assumptions are reasonable, there can be no assurance that any of these estimates and projections will be correct. Therefore, actual results may vary materially from these estimates and projections. Any square footage dimensions set forth are approximate.

138 BOWERY

NOLITA, NYC | Between Broome and Grand Streets

RESTAURANT/RETAIL FOR LEASE

FLOOR PLAN | LOWER LEVEL



JAMES FAMULARO

President
646.658.7373
jfamularo@meridiancapital.com

BOBBY ORTENSE

Director
212.468.5953
bortense@meridiancapital.com

COLE KLEPPINGER

Associate
212.468.5993
ckleppinger@meridiancapital.com



MERIDIAN
RETAIL LEASING

All information supplied is from sources deemed reliable and is furnished subject to errors, omissions, modifications, removal of the listing from sale or lease, and to any listing conditions, including the rates and manner of payment of commissions for particular offerings imposed by Meridian Capital Group. This information may include estimates and projections prepared by Meridian Capital Group with respect to future events, and these future events may or may not actually occur. Such estimates and projections reflect various assumptions concerning anticipated results. While Meridian Capital Group believes these assumptions are reasonable, there can be no assurance that any of these estimates and projections will be correct. Therefore, actual results may vary materially from these estimates and projections. Any square footage dimensions set forth are approximate.

138 BOWERY

NOLITA, NYC | Between Broome and Grand Streets

RESTAURANT/RETAIL FOR LEASE



NEIGHBORS

JAMES FAMULARO

President
646.658.7373

jfamularo@meridiancapital.com

BOBBY ORTENSE

Director
212.468.5953

bortense@meridiancapital.com

COLE KLEPPINGER

Associate
212.468.5993

ckleppinger@meridiancapital.com



MERIDIAN
RETAIL LEASING

All information supplied is from sources deemed reliable and is furnished subject to errors, omissions, modifications, removal of the listing from sale or lease, and to any listing conditions, including the rates and manner of payment of commissions for particular offerings imposed by Meridian Capital Group. This information may include estimates and projections prepared by Meridian Capital Group with respect to future events, and these future events may or may not actually occur. Such estimates and projections reflect various assumptions concerning anticipated results. While Meridian Capital Group believes these assumptions are reasonable, there can be no assurance that any of these estimates and projections will be correct. Therefore, actual results may vary materially from these estimates and projections. Any square footage dimensions set forth are approximate.