

92

AVENUE C EAST VILLAGE, NYC

Corner of Avenue C & East 6th Street

COMMUNITY FACILITY FOR LEASE

APPROXIMATE SIZE
387 SF

ASKING RENT
\$2,600/Month

TERM
Negotiable

POSSESSION
Immediate

FRONTAGE
15 FT

COMMENTS

- Brand-new construction
- High ceilings and large windows
- Corner building
- High foot traffic
- Elevator lobby

NEIGHBORS

Bobwhite Counter • Accidental Bar • Alphabet City Wine Co. • HiLot • Joyface • Ding-A-Ling • Food Universe • Thirteen Water • Satsko • Horus Café

TRANSPORTATION

F M J Z L



PROPERTY INFORMATION

JOSEPH HARARY

Director
212.468.5978
jharary@meridiancapital.com

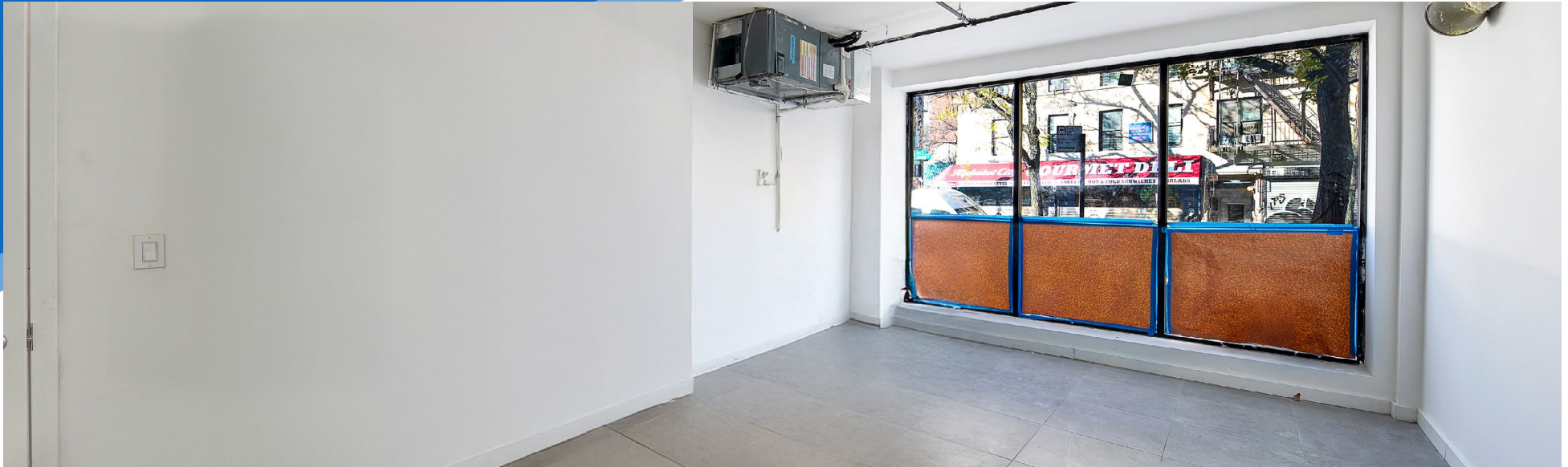
SHAYA KATZ

Associate
212.468.5991
shaya.katz@meridiancapital.com



MERIDIAN
RETAIL LEASING

All information supplied is from sources deemed reliable and is furnished subject to errors, omissions, modifications, removal of the listing from sale or lease, and to any listing conditions, including the rates and manner of payment of commissions for particular offerings imposed by Meridian Capital Group. This information may include estimates and projections prepared by Meridian Capital Group with respect to future events, and these future events may or may not actually occur. Such estimates and projections reflect various assumptions concerning anticipated results. While Meridian Capital Group believes these assumptions are reasonable, there can be no assurance that any of these estimates and projections will be correct. Therefore, actual results may vary materially from these estimates and projections. Any square footage dimensions set forth are approximate.



INTERIOR

JOSEPH HARARY
Director
212.468.5978
jharary@meridiancapital.com

SHAYA KATZ
Associate
212.468.5991
shaya.katz@meridiancapital.com



MERIDIAN
RETAIL LEASING

92 AVENUE C

EAST VILLAGE, NYC | Corner of Avenue C and East 6th Street

COMMUNITY FACILITY FOR LEASE



JOSEPH HARARY

Director
212.468.5978
jharary@meridiancapital.com

SHAYA KATZ

Associate
212.468.5991
shaya.katz@meridiancapital.com



MERIDIAN
RETAIL LEASING

All information supplied is from sources deemed reliable and is furnished subject to errors, omissions, modifications, removal of the listing from sale or lease, and to any listing conditions, including the rates and manner of payment of commissions for particular offerings imposed by Meridian Capital Group. This information may include estimates and projections prepared by Meridian Capital Group with respect to future events, and these future events may or may not actually occur. Such estimates and projections reflect various assumptions concerning anticipated results. While Meridian Capital Group believes these assumptions are reasonable, there can be no assurance that any of these estimates and projections will be correct. Therefore, actual results may vary materially from these estimates and projections. Any square footage dimensions set forth are approximate.