

200

MESEROLE STREET WILLIAMSBURG, BROOKLYN

Between Humbolt Street & Bushwick Avenue

RETAIL FOR LEASE

APPROXIMATE SIZE

Ground Floor: 800 SF
Basement: 500 SF

ASKING RENT

Upon Request

POSSESSION

Immediate

TERM

Negotiable

FRONTAGE

20 FT

COMMENTS

- Newly renovated with a new HVAC system, electric/plumbing, bathrooms, and storefront
- In vanilla-box condition
- Ideal for coffee shop, tattoo parlor, nail salon, gallery, yoga studio, etc.
- One-block from the L train at Montrose Avenue
- All uses considered

NEIGHBORS

Have a Bagel Bushwick Avenue • Tradesman • Beyond Natural Market • Luckybird Bakery • Win Son • 10 Thousand Foxes Tattoo • Hi Hello Crepes

TRANSPORTATION



B60



JAMES FAMULARO
President

NOAM AZIZ
Director
212.468.5984
naziz@meridiancapital.com

STEPHEN LIGAMBI
Senior Associate
212.468.5985
sligambi@meridiancapital.com



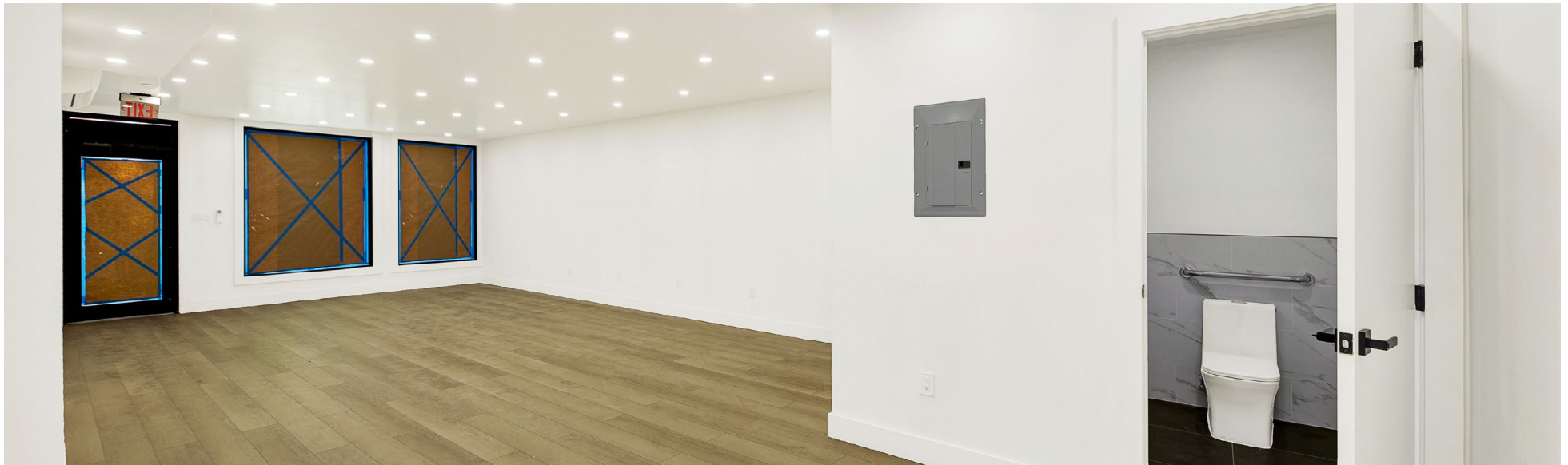
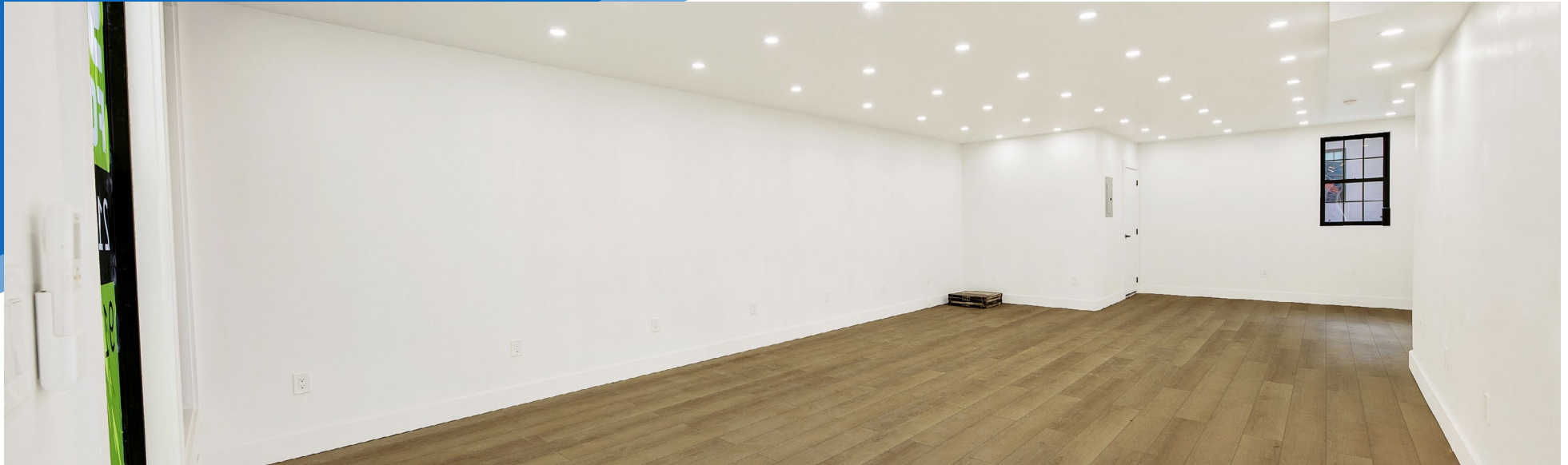
MERIDIAN
RETAIL LEASING

All information supplied is from sources deemed reliable and is furnished subject to errors, omissions, modifications, removal of the listing from sale or lease, and to any listing conditions, including the rates and manner of payment of commissions for particular offerings imposed by Meridian Capital Group. This information may include estimates and projections prepared by Meridian Capital Group with respect to future events, and these future events may or may not actually occur. Such estimates and projections reflect various assumptions concerning anticipated results. While Meridian Capital Group believes these assumptions are reasonable, there can be no assurance that any of these estimates and projections will be correct. Therefore, actual results may vary materially from these estimates and projections. Any square footage dimensions set forth are approximate.

200 MESEROLE STREET

WILLIAMSBURG, BROOKLYN | Between Humbolt Street & Bushwick Avenue

RETAIL FOR LEASE



INTERIOR

JAMES FAMULARO
President

NOAM AZIZ
Director
212.468.5984
naziz@meridiancapital.com

STEPHEN LIGAMBI
Senior Associate
212.468.5985
sligambi@meridiancapital.com



MERIDIAN
RETAIL LEASING

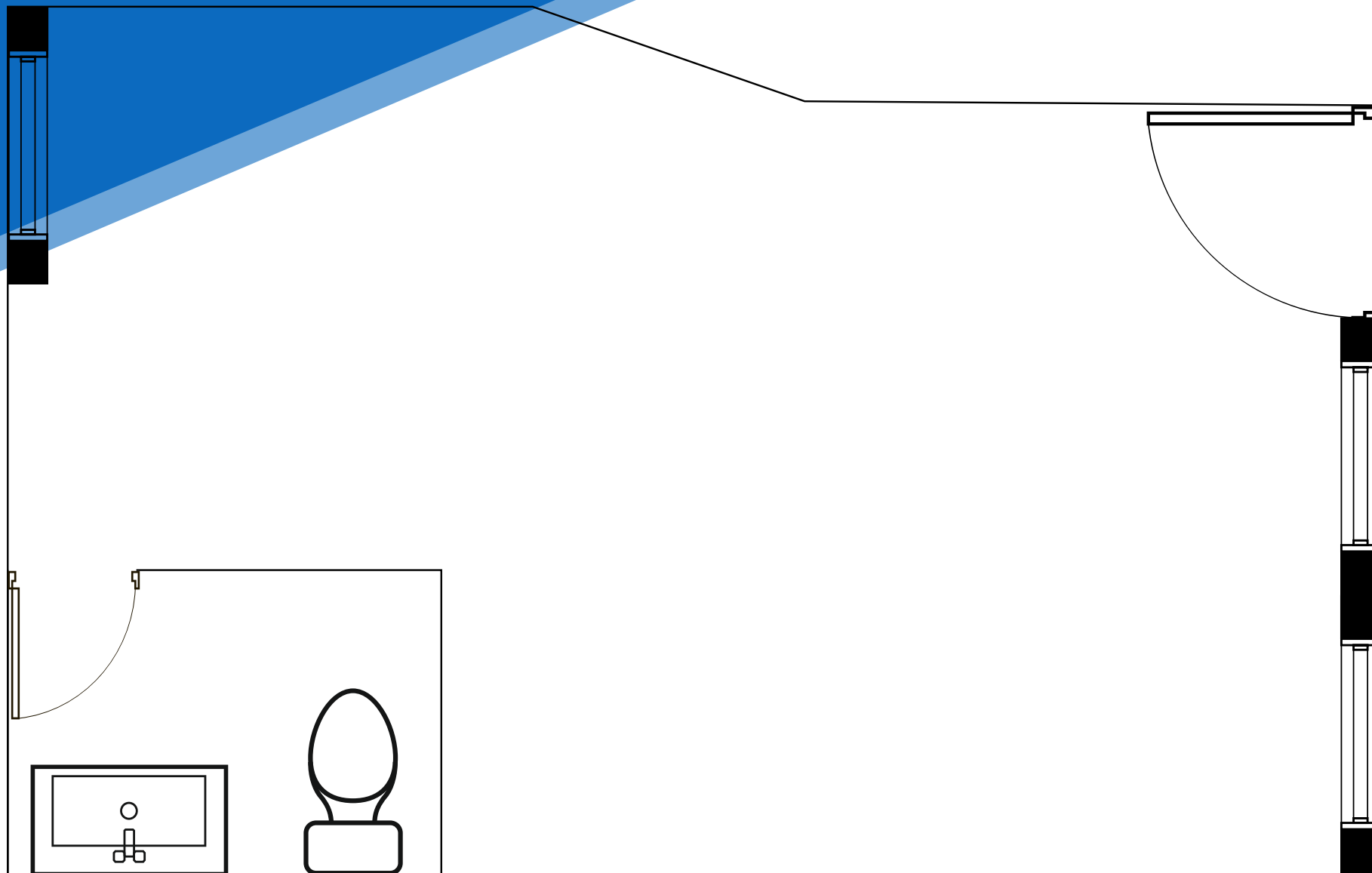
All information supplied is from sources deemed reliable and is furnished subject to errors, omissions, modifications, removal of the listing from sale or lease, and to any listing conditions, including the rates and manner of payment of commissions for particular offerings imposed by Meridian Capital Group. This information may include estimates and projections prepared by Meridian Capital Group with respect to future events, and these future events may or may not actually occur. Such estimates and projections reflect various assumptions concerning anticipated results. While Meridian Capital Group believes these assumptions are reasonable, there can be no assurance that any of these estimates and projections will be correct. Therefore, actual results may vary materially from these estimates and projections. Any square footage dimensions set forth are approximate.

200 MESEROLE STREET

WILLIAMSBURG, BROOKLYN | Between Humbolt Street & Bushwick Avenue

RETAIL FOR LEASE

FLOOR PLAN



JAMES FAMULARO
President

NOAM AZIZ
Director
212.468.5984
naziz@meridiancapital.com

STEPHEN LIGAMBI
Senior Associate
212.468.5985
sligambi@meridiancapital.com



MERIDIAN
RETAIL LEASING

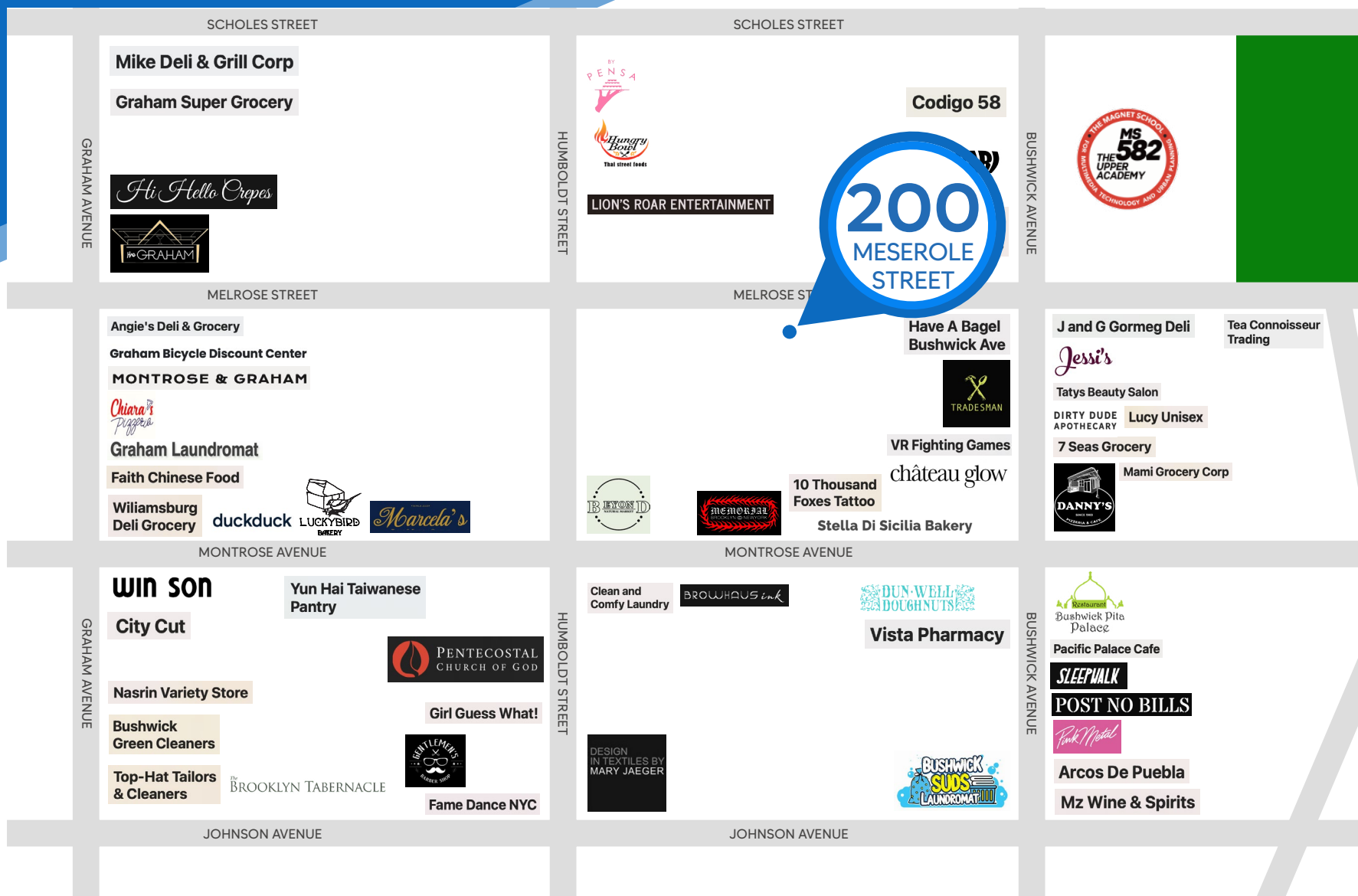
All information supplied is from sources deemed reliable and is furnished subject to errors, omissions, modifications, removal of the listing from sale or lease, and to any listing conditions, including the rates and manner of payment of commissions for particular offerings imposed by Meridian Capital Group. This information may include estimates and projections prepared by Meridian Capital Group with respect to future events, and these future events may or may not actually occur. Such estimates and projections reflect various assumptions concerning anticipated results. While Meridian Capital Group believes these assumptions are reasonable, there can be no assurance that any of these estimates and projections will be correct. Therefore, actual results may vary materially from these estimates and projections. Any square footage dimensions set forth are approximate.

200 MESEROLE STREET

WILLIAMSBURG, BROOKLYN | Between Humbolt Street & Bushwick Avenue

RETAIL FOR LEASE

NEIGHBORS



JAMES FAMULARO
President

NOAM AZIZ
Director
212.468.5984
naziz@meridiancapital.com

STEPHEN LIGAMBI
Senior Associate
212.468.5985
sligambi@meridiancapital.com



MERIDIAN
RETAIL LEASING

All information supplied is from sources deemed reliable and is furnished subject to errors, omissions, modifications, removal of the listing from sale or lease, and to any listing conditions, including the rates and manner of payment of commissions for particular offerings imposed by Meridian Capital Group. This information may include estimates and projections prepared by Meridian Capital Group with respect to future events, and these future events may or may not actually occur. Such estimates and projections reflect various assumptions concerning anticipated results. While Meridian Capital Group believes these assumptions are reasonable, there can be no assurance that any of these estimates and projections will be correct. Therefore, actual results may vary materially from these estimates and projections. Any square footage dimensions set forth are approximate.