

190

WEST 231ST STREET KINGSBRIDGE, BRONX

Corner of West 231st Street & Broadway

RETAIL FOR LEASE

APPROXIMATE SIZE

Ground Floor: 789 SF
Lower Level: 7,702 SF

ASKING RENT

~~\$49.50 PSF~~ Reduced
\$44 PSF

POSSESSION

Arranged

TERM

Negotiable

FRONTAGE

10 FT

COMMENTS

- Lower level retail space with strong co-tenancy
- Largest retail space available in the neighborhood
- High ceilings and ample storage space
- Private lobby with convenient elevator access

NEIGHBORS

Chipotle • Walgreens • Broadway Pizza & Pasta •
ALDI • Auntie Anne's • Best Buy • Starbucks • Blink
Fitness • Foodtown • TJ Maxx • Papa John's

TRANSPORTATION

1

JAMES FAMULARO
President

NOAM AZIZ
Director
212.468.5984
naziz@meridiancapital.com

AARON HAROUNIAN
Associate
212.468.5957
aharounian@meridiancapital.com



MERIDIAN
RETAIL LEASING

All information supplied is from sources deemed reliable and is furnished subject to errors, omissions, modifications, removal of the listing from sale or lease, and to any listing conditions, including the rates and manner of payment of commissions for particular offerings imposed by Meridian Capital Group. This information may include estimates and projections prepared by Meridian Capital Group with respect to future events, and these future events may or may not actually occur. Such estimates and projections reflect various assumptions concerning anticipated results. While Meridian Capital Group believes these assumptions are reasonable, there can be no assurance that any of these estimates and projections will be correct. Therefore, actual results may vary materially from these estimates and projections. Any square footage dimensions set forth are approximate.

190 WEST 231ST STREET
KINGSBRIDGE, BRONX | Corner of 231st Street and Broadway

RETAIL FOR LEASE



INTERIOR

JAMES FAMULARO
President

NOAM AZIZ
Director
212.468.5984
naziz@meridiancapital.com

AARON HAROUNIAN
Associate
212.468.5957
aharounian@meridiancapital.com



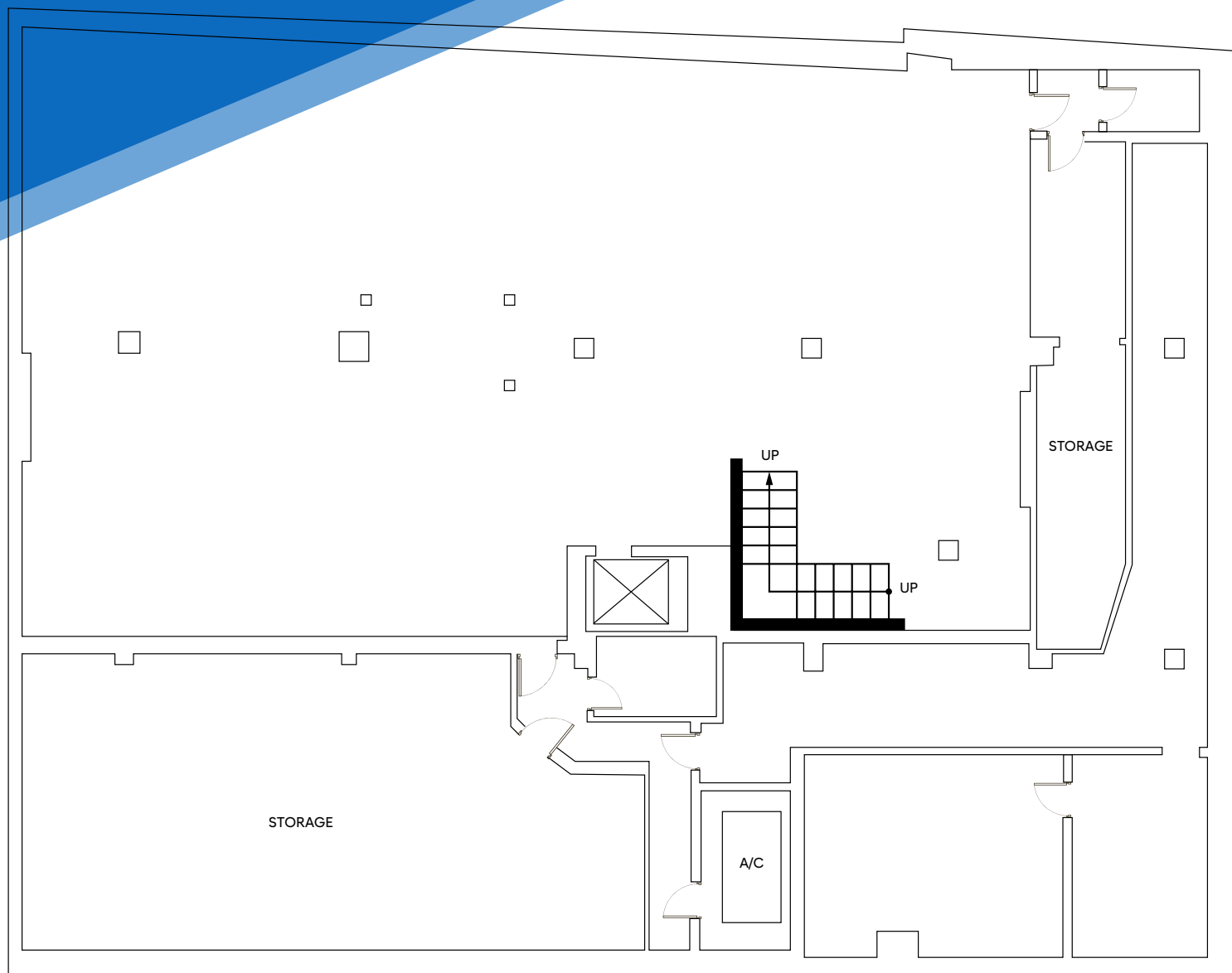
MERIDIAN
RETAIL LEASING

All information supplied is from sources deemed reliable and is furnished subject to errors, omissions, modifications, removal of the listing from sale or lease, and to any listing conditions, including the rates and manner of payment of commissions for particular offerings imposed by Meridian Capital Group. This information may include estimates and projections prepared by Meridian Capital Group with respect to future events, and these future events may or may not actually occur. Such estimates and projections reflect various assumptions concerning anticipated results. While Meridian Capital Group believes these assumptions are reasonable, there can be no assurance that any of these estimates and projections will be correct. Therefore, actual results may vary materially from these estimates and projections. Any square footage dimensions set forth are approximate.

190 WEST 231ST STREET
KINGSBRIDGE, BRONX | Corner of 231st Street and Broadway

RETAIL FOR LEASE

FLOOR PLAN



JAMES FAMULARO
President

NOAM AZIZ
Director
212.468.5984
naziz@meridiancapital.com

AARON HAROUNIAN
Associate
212.468.5957
aharounian@meridiancapital.com



MERIDIAN
RETAIL LEASING

All information supplied is from sources deemed reliable and is furnished subject to errors, omissions, modifications, removal of the listing from sale or lease, and to any listing conditions, including the rates and manner of payment of commissions for particular offerings imposed by Meridian Capital Group. This information may include estimates and projections prepared by Meridian Capital Group with respect to future events, and these future events may or may not actually occur. Such estimates and projections reflect various assumptions concerning anticipated results. While Meridian Capital Group believes these assumptions are reasonable, there can be no assurance that any of these estimates and projections will be correct. Therefore, actual results may vary materially from these estimates and projections. Any square footage dimensions set forth are approximate.

RETAIL FOR LEASE



NEIGHBORS

AARON HAROUNIAN
Associate
212.468.5957
aharounian@meridiancapital.com



MERIDIAN RETAIL LEASING

All information supplied is from sources deemed reliable and is furnished subject to errors, omissions, modifications, removal of the listing from sale or lease, and to any listing conditions, including the rates and manner of payment of commissions for particular offerings imposed by Meridian Capital Group. This information may include estimates and projections prepared by Meridian Capital Group with respect to future events, and these future events may or may not actually occur. Such estimates and projections reflect various assumptions concerning anticipated results. While Meridian Capital Group believes these assumptions are reasonable, there can be no assurance that any of these estimates and projections will be correct. Therefore, actual results may vary materially from these estimates and projections. Any square footage dimensions set forth are approximate.