

508

EAST 117TH STREET EAST HARLEM, NYC

Between Pleasant Avenue & FDR Drive

RETAIL/OFFICE FOR LEASE

APPROXIMATE SIZE

Second Floor: 2,500 SF
Third Floor: 2,500 SF

ASKING RENT

~~\$35 PSF~~ Reduced
\$30 PSF

POSSESSION

Immediate

TERM

5-15 Years

CEILING HEIGHTS

11 FT

COMMENTS

- Open floor plan with no column intrusions
- High ceilings and exposed brick wall
- Natural sunlight on both floors
- In close proximity to big-box retailers

NEIGHBORS

Dunkin' • Costco • Bob's Furniture • Burlington •
Ashley • Marshalls • Planet Fitness • Patsy's Pizzeria
• Subway • La Hacienda • Fierce Spa • Rao's

TRANSPORTATION

6



JAMES FAMULARO
President

DANE HARLOWE
Director
212.468.5966
dharlowe@meridiancapital.com

NOAM AZIZ
Associate
212.468.5984
naziz@meridiancapital.com

NATHAN SHABOT
Associate
212.468.5933
nshabot@meridiancapital.com

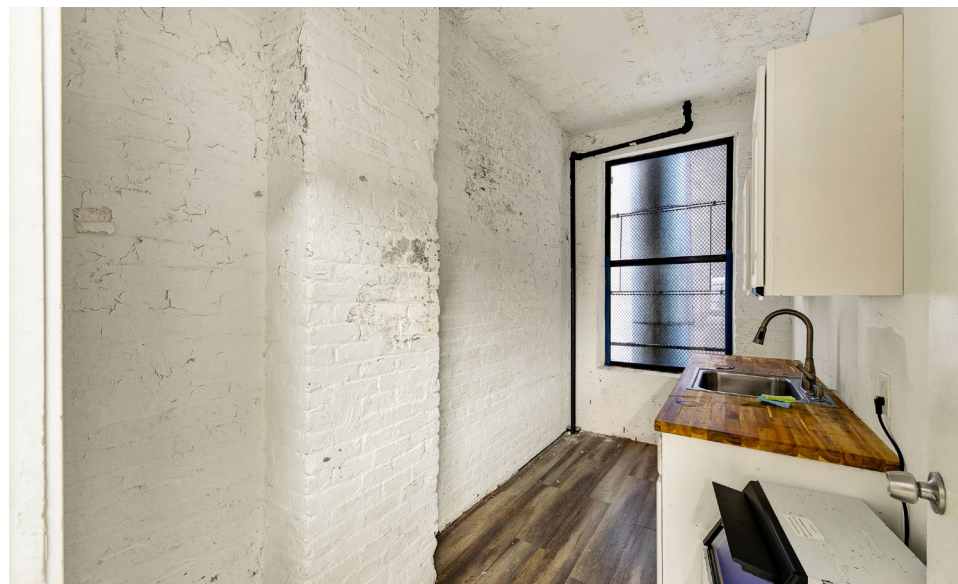
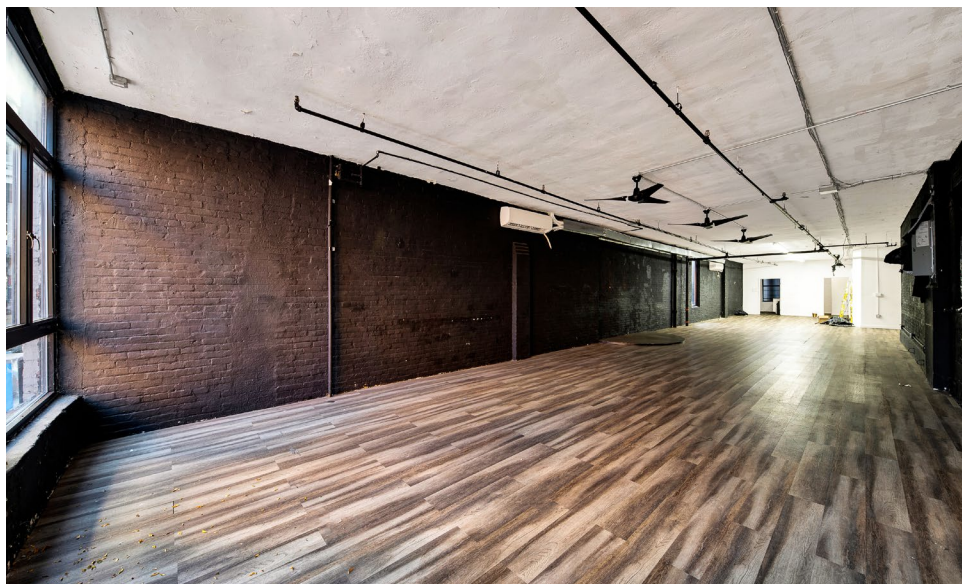
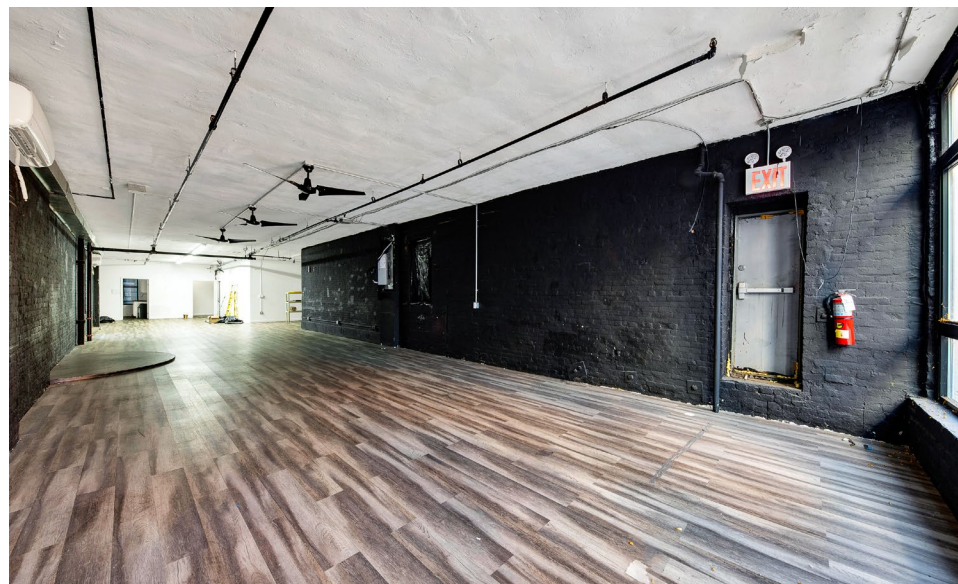
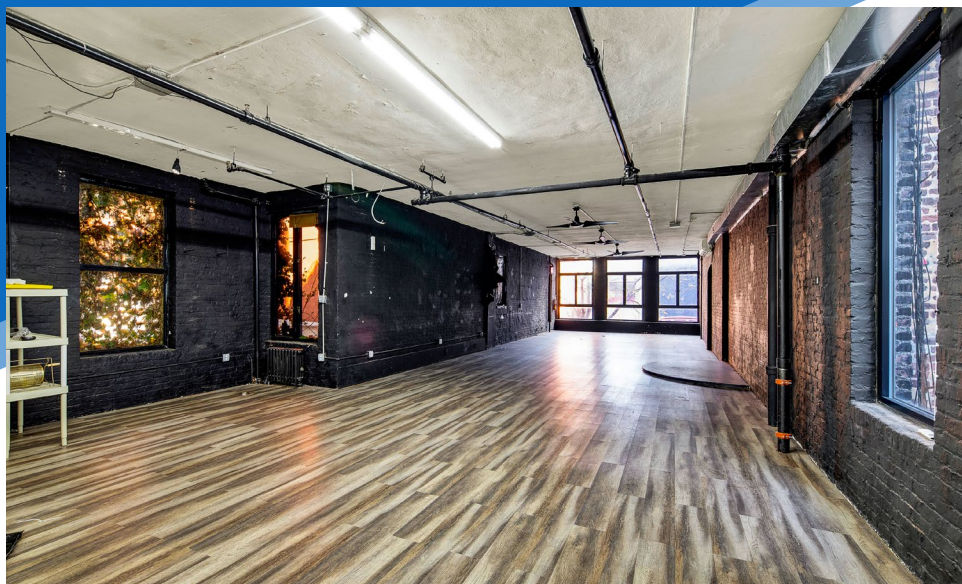


MERIDIAN
RETAIL LEASING

All information supplied is from sources deemed reliable and is furnished subject to errors, omissions, modifications, removal of the listing from sale or lease, and to any listing conditions, including the rates and manner of payment of commissions for particular offerings imposed by Meridian Capital Group. This information may include estimates and projections prepared by Meridian Capital Group with respect to future events, and these future events may or may not actually occur. Such estimates and projections reflect various assumptions concerning anticipated results. While Meridian Capital Group believes these assumptions are reasonable, there can be no assurance that any of these estimates and projections will be correct. Therefore, actual results may vary materially from these estimates and projections. Any square footage dimensions set forth are approximate.

508 EAST 117TH STREET
EAST HARLEM, NYC | Between Pleasant Avenue and FDR Drive

RETAIL/OFFICE FOR LEASE



INTERIOR | SECOND FLOOR

JAMES FAMULARO
President

DANE HARLOWE
Director
212.468.5966
dharlowe@meridiancapital.com

NOAM AZIZ
Associate
212.468.5984
naziz@meridiancapital.com

NATHAN SHABOT
Associate
212.468.5933
nshabot@meridiancapital.com

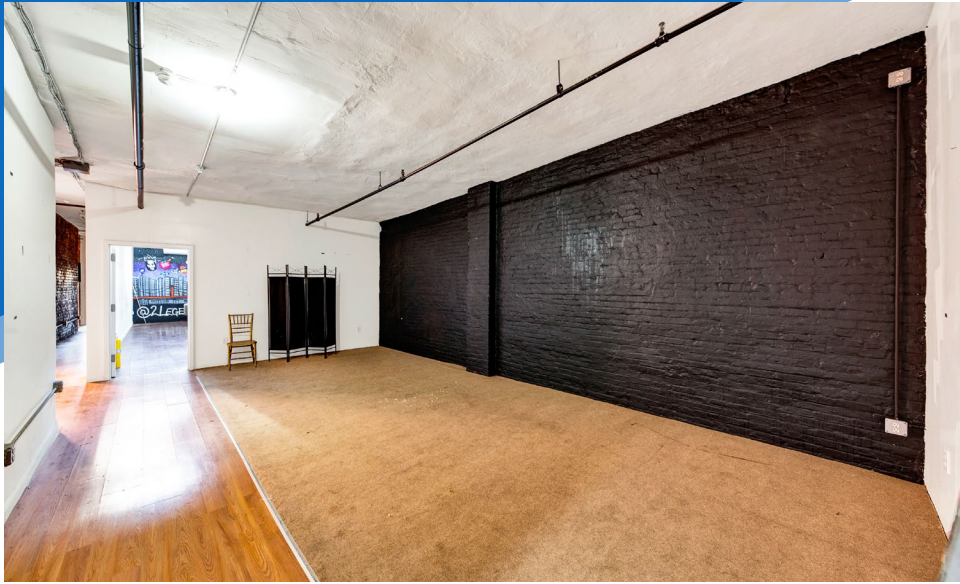


MERIDIAN
RETAIL LEASING

All information supplied is from sources deemed reliable and is furnished subject to errors, omissions, modifications, removal of the listing from sale or lease, and to any listing conditions, including the rates and manner of payment of commissions for particular offerings imposed by Meridian Capital Group. This information may include estimates and projections prepared by Meridian Capital Group with respect to future events, and these future events may or may not actually occur. Such estimates and projections reflect various assumptions concerning anticipated results. While Meridian Capital Group believes these assumptions are reasonable, there can be no assurance that any of these estimates and projections will be correct. Therefore, actual results may vary materially from these estimates and projections. Any square footage dimensions set forth are approximate.

508 EAST 117TH STREET
EAST HARLEM, NYC | Between Pleasant Avenue and FDR Drive

RETAIL/OFFICE FOR LEASE



INTERIOR | THIRD FLOOR

JAMES FAMULARO
President

DANE HARLOWE
Director
212.468.5966
dharlowe@meridiancapital.com

NOAM AZIZ
Associate
212.468.5984
naziz@meridiancapital.com

NATHAN SHABOT
Associate
212.468.5933
nshabot@meridiancapital.com



MERIDIAN
RETAIL LEASING

All information supplied is from sources deemed reliable and is furnished subject to errors, omissions, modifications, removal of the listing from sale or lease, and to any listing conditions, including the rates and manner of payment of commissions for particular offerings imposed by Meridian Capital Group. This information may include estimates and projections prepared by Meridian Capital Group with respect to future events, and these future events may or may not actually occur. Such estimates and projections reflect various assumptions concerning anticipated results. While Meridian Capital Group believes these assumptions are reasonable, there can be no assurance that any of these estimates and projections will be correct. Therefore, actual results may vary materially from these estimates and projections. Any square footage dimensions set forth are approximate.

508 EAST 117TH STREET
EAST HARLEM, NYC | Between Pleasant Avenue and FDR Drive

RETAIL/OFFICE FOR LEASE



NEIGHBORS

JAMES FAMULARO
President

DANE HARLOWE
Director
212.468.5966
dharlowe@meridiancapital.com

NOAM AZIZ
Associate
212.468.5984
naziz@meridiancapital.com

NATHAN SHABOT
Associate
212.468.5933
nshabot@meridiancapital.com



MERIDIAN
RETAIL LEASING

All information supplied is from sources deemed reliable and is furnished subject to errors, omissions, modifications, removal of the listing from sale or lease, and to any listing conditions, including the rates and manner of payment of commissions for particular offerings imposed by Meridian Capital Group. This information may include estimates and projections prepared by Meridian Capital Group with respect to future events, and these future events may or may not actually occur. Such estimates and projections reflect various assumptions concerning anticipated results. While Meridian Capital Group believes these assumptions are reasonable, there can be no assurance that any of these estimates and projections will be correct. Therefore, actual results may vary materially from these estimates and projections. Any square footage dimensions set forth are approximate.