

331

EAST 9TH STREET
EAST VILLAGE, NYC

Between First & Second Avenues

RETAIL FOR LEASE

APPROXIMATE SIZE

513 SF

ASKING RENT

~~\$6,750/Month~~ Reduced
\$6,000/Month

POSSESSION

Immediate

TERM

5-10 Years

FRONTAGE

10 FT

COMMENTS

- Close proximity to Tompkins Square Park
- Busy East Village corridor
- All non-vented uses considered

NEIGHBORS

Veselka • Davey's Ice Cream • MUD • Gnocchi on 9th • Rowdy Rooster • Lady Wong Pastry & Cakes • The Immigrant • Clock and Dagger • Veniero's • Joe & Pat's • Black Seed Bagels • Kikoo • Blank Street • Cagen • The Grafton • Gelatoville • HAGS • Brooklyn Dumpling Shop

TRANSPORTATION

4 5 6 L F N Q R

PROPERTY INFORMATION

JAMES FAMULARO
President

GREG GOLDBERG
Senior Director
646.780.4904
ggoldberg@meridiancapital.com

JAKE HERSKOWITZ
Associate
212.468.5941
jherskowitz@meridiancapital.com



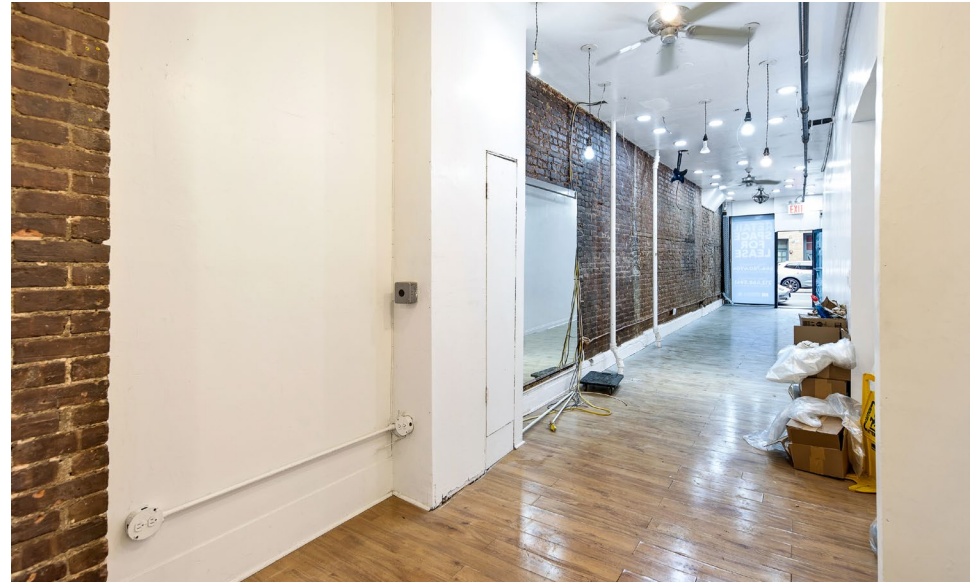
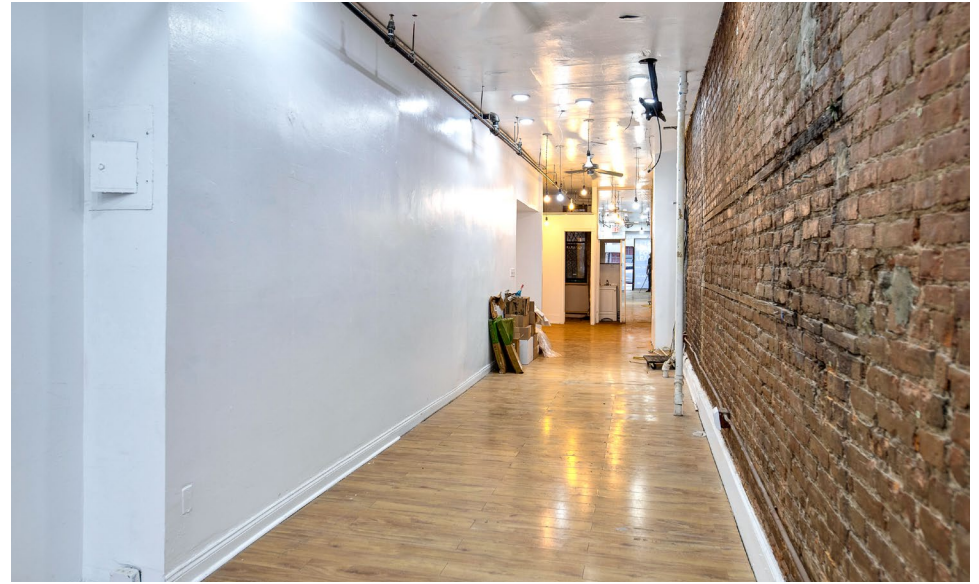
MERIDIAN
RETAIL LEASING

All information supplied is from sources deemed reliable and is furnished subject to errors, omissions, modifications, removal of the listing from sale or lease, and to any listing conditions, including the rates and manner of payment of commissions for particular offerings imposed by Meridian Capital Group. This information may include estimates and projections prepared by Meridian Capital Group with respect to future events, and these future events may or may not actually occur. Such estimates and projections reflect various assumptions concerning anticipated results. While Meridian Capital Group believes these assumptions are reasonable, there can be no assurance that any of these estimates and projections will be correct. Therefore, actual results may vary materially from these estimates and projections. Any square footage dimensions set forth are approximate.

331 EAST 9TH STREET

EAST VILLAGE, NYC | Between First and Second Avenues

RETAIL FOR LEASE



INTERIOR

JAMES FAMULARO
President

GREG GOLDBERG
Senior Director
646.780.4904
ggoldberg@meridiancapital.com

JAKE HERSKOWITZ
Associate
212.468.5941
jherskowitz@meridiancapital.com



MERIDIAN
RETAIL LEASING

All information supplied is from sources deemed reliable and is furnished subject to errors, omissions, modifications, removal of the listing from sale or lease, and to any listing conditions, including the rates and manner of payment of commissions for particular offerings imposed by Meridian Capital Group. This information may include estimates and projections prepared by Meridian Capital Group with respect to future events, and these future events may or may not actually occur. Such estimates and projections reflect various assumptions concerning anticipated results. While Meridian Capital Group believes these assumptions are reasonable, there can be no assurance that any of these estimates and projections will be correct. Therefore, actual results may vary materially from these estimates and projections. Any square footage dimensions set forth are approximate.

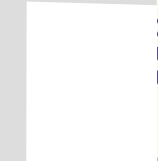
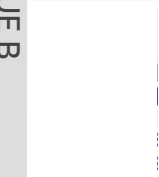
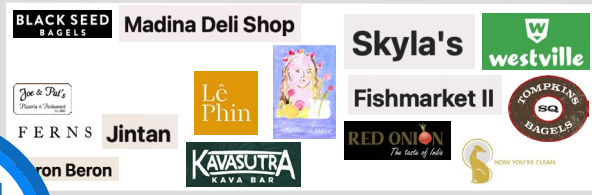
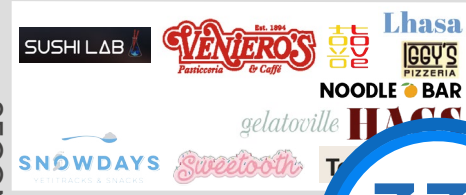
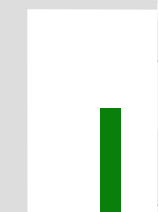
331 EAST 9TH STREET

EAST VILLAGE, NYC | Between First and Second Avenues

RETAIL FOR LEASE

SECOND AVENUE

NEIGHBORS



JAMES FAMULARO
President

GREG GOLDBERG
Senior Director
646.780.4904
ggoldberg@meridiancapital.com

JAKE HERSKOWITZ
Associate
212.468.5941
jherzkowitz@meridiancapital.com



MERIDIAN
RETAIL LEASING

All information supplied is from sources deemed reliable and is furnished subject to errors, omissions, modifications, removal of the listing from sale or lease, and to any listing conditions, including the rates and manner of payment of commissions for particular offerings imposed by Meridian Capital Group. This information may include estimates and projections prepared by Meridian Capital Group with respect to future events, and these future events may or may not actually occur. Such estimates and projections reflect various assumptions concerning anticipated results. While Meridian Capital Group believes these assumptions are reasonable, there can be no assurance that any of these estimates and projections will be correct. Therefore, actual results may vary materially from these estimates and projections. Any square footage dimensions set forth are approximate.