

218

LENOX AVENUE

HARLEM, NYC

Corner of Lenox Avenue & West 121st Street

RESTAURANT FOR LEASE

APPROXIMATE SIZE

1,400 SF + Basement

ASKING RENT

~~\$11,000/Month~~ Reduced
\$9,500/Month

POSSESSION

Immediate

TERM

5-15 Years

FRONTAGE

75+ FT Wraparound

COMMENTS

- Step-down restaurant space with new ventilation and gas lines in place
- Built-out bar space
- Interior access to storage in the basement
- Expansive outdoor seating available

NEIGHBORS

Barawine • Eddy Dance + Pilates • Settepani
• Sugar Hill Creamery • Sotto Casa • Mia
Skin Bar • Plant Corner • Archer & Goat

TRANSPORTATION

2 3



JAMES FAMULARO

President

DANE HARLOWE

Director

212.468.5966

dharlowe@meridiancapital.com

NOAM AZIZ

Associate

212.468.5984

naziz@meridiancapital.com



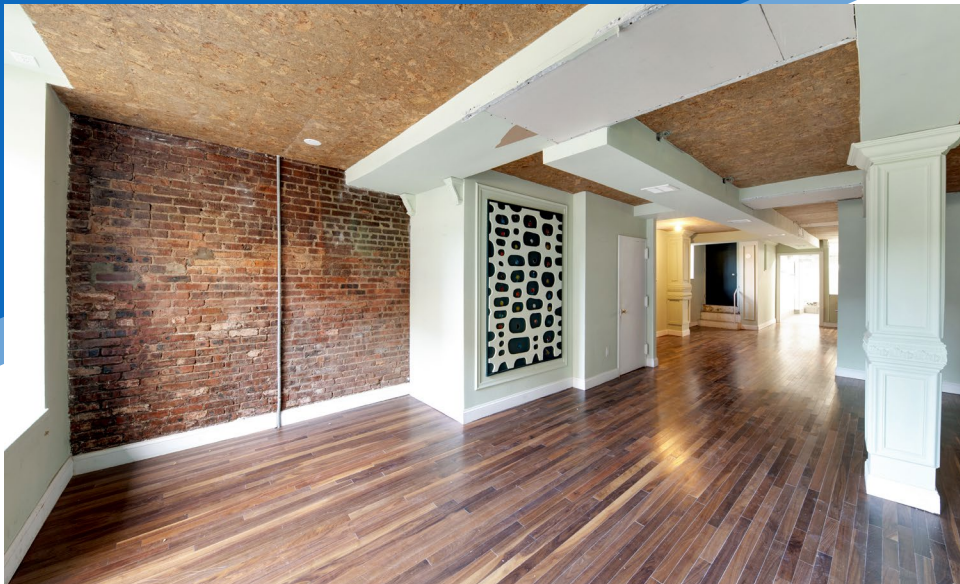
MERIDIAN
RETAIL LEASING

All information supplied is from sources deemed reliable and is furnished subject to errors, omissions, modifications, removal of the listing from sale or lease, and to any listing conditions, including the rates and manner of payment of commissions for particular offerings imposed by Meridian Capital Group. This information may include estimates and projections prepared by Meridian Capital Group with respect to future events, and these future events may or may not actually occur. Such estimates and projections reflect various assumptions concerning anticipated results. While Meridian Capital Group believes these assumptions are reasonable, there can be no assurance that any of these estimates and projections will be correct. Therefore, actual results may vary materially from these estimates and projections. Any square footage dimensions set forth are approximate.

218 LENOX AVENUE

HARLEM, NYC | Corner of Lenox Avenue & West 121st Street

RESTAURANT FOR LEASE



INTERIOR

JAMES FAMULARO
President

DANE HARLOWE
Director
212.468.5966
dharlowe@meridancapital.com

NOAM AZIZ
Associate
212.468.5984
naziz@meridancapital.com



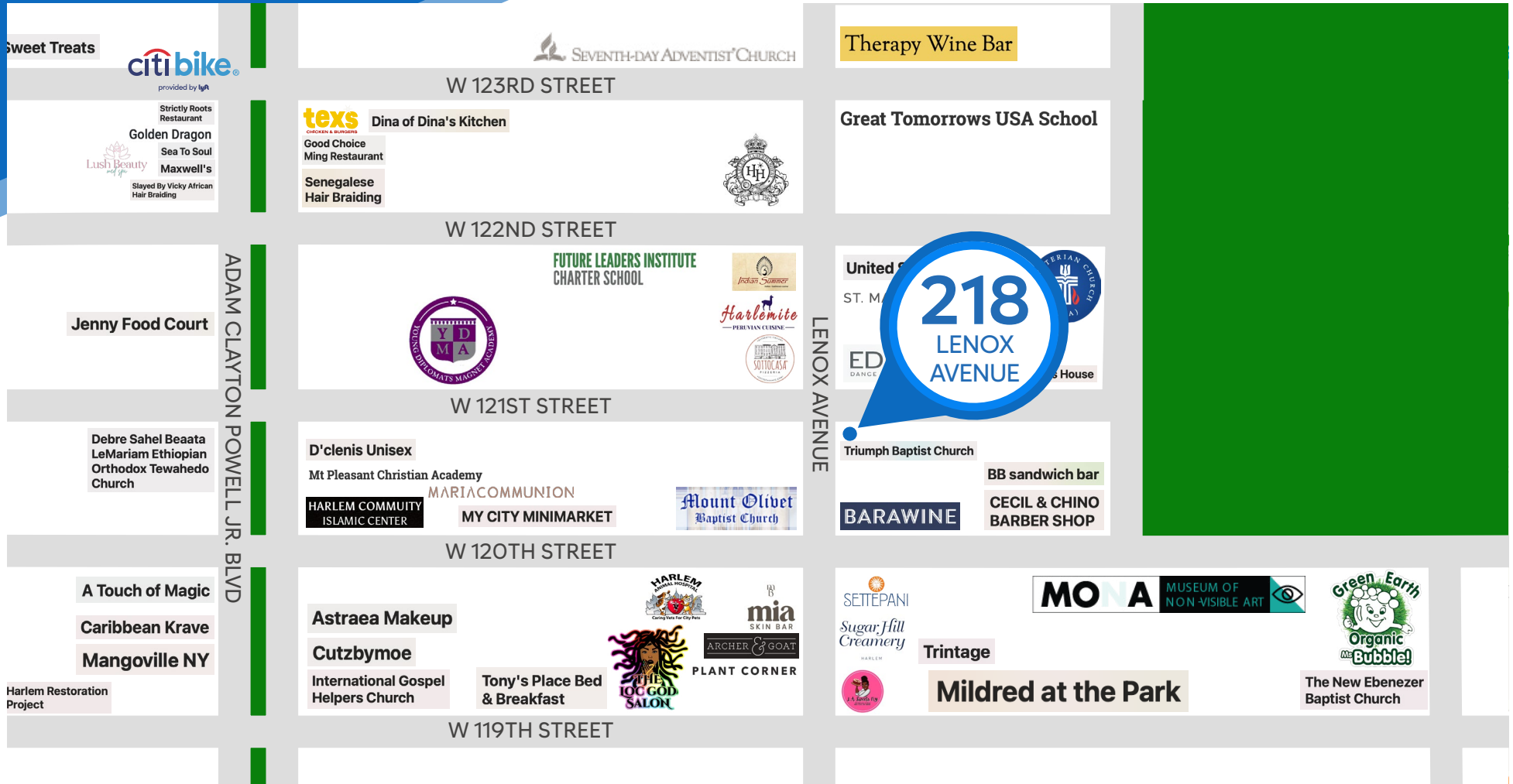
MERIDIAN
RETAIL LEASING

All information supplied is from sources deemed reliable and is furnished subject to errors, omissions, modifications, removal of the listing from sale or lease, and to any listing conditions, including the rates and manner of payment of commissions for particular offerings imposed by Meridian Capital Group. This information may include estimates and projections prepared by Meridian Capital Group with respect to future events, and these future events may or may not actually occur. Such estimates and projections reflect various assumptions concerning anticipated results. While Meridian Capital Group believes these assumptions are reasonable, there can be no assurance that any of these estimates and projections will be correct. Therefore, actual results may vary materially from these estimates and projections. Any square footage dimensions set forth are approximate.

218 LENOX AVENUE

HARLEM, NYC | Corner of Lenox Avenue & West 121st Street

RESTAURANT FOR LEASE



NEIGHBORS

JAMES FAMULARO
President

DANE HARLOWE
Director
212.468.5966
dharlowe@meridiancapital.com

NOAM AZIZ
Associate
212.468.5984
naziz@meridiancapital.com



MERIDIAN
RETAIL LEASING

All information supplied is from sources deemed reliable and is furnished subject to errors, omissions, modifications, removal of the listing from sale or lease, and to any listing conditions, including the rates and manner of payment of commissions for particular offerings imposed by Meridian Capital Group. This information may include estimates and projections prepared by Meridian Capital Group with respect to future events, and these future events may or may not actually occur. Such estimates and projections reflect various assumptions concerning anticipated results. While Meridian Capital Group believes these assumptions are reasonable, there can be no assurance that any of these estimates and projections will be correct. Therefore, actual results may vary materially from these estimates and projections. Any square footage dimensions set forth are approximate.