

1975

MADISON AVENUE HARLEM, NYC

Corner of Madison Avenue & East 126th Street



MERIDIAN
RETAIL LEASING

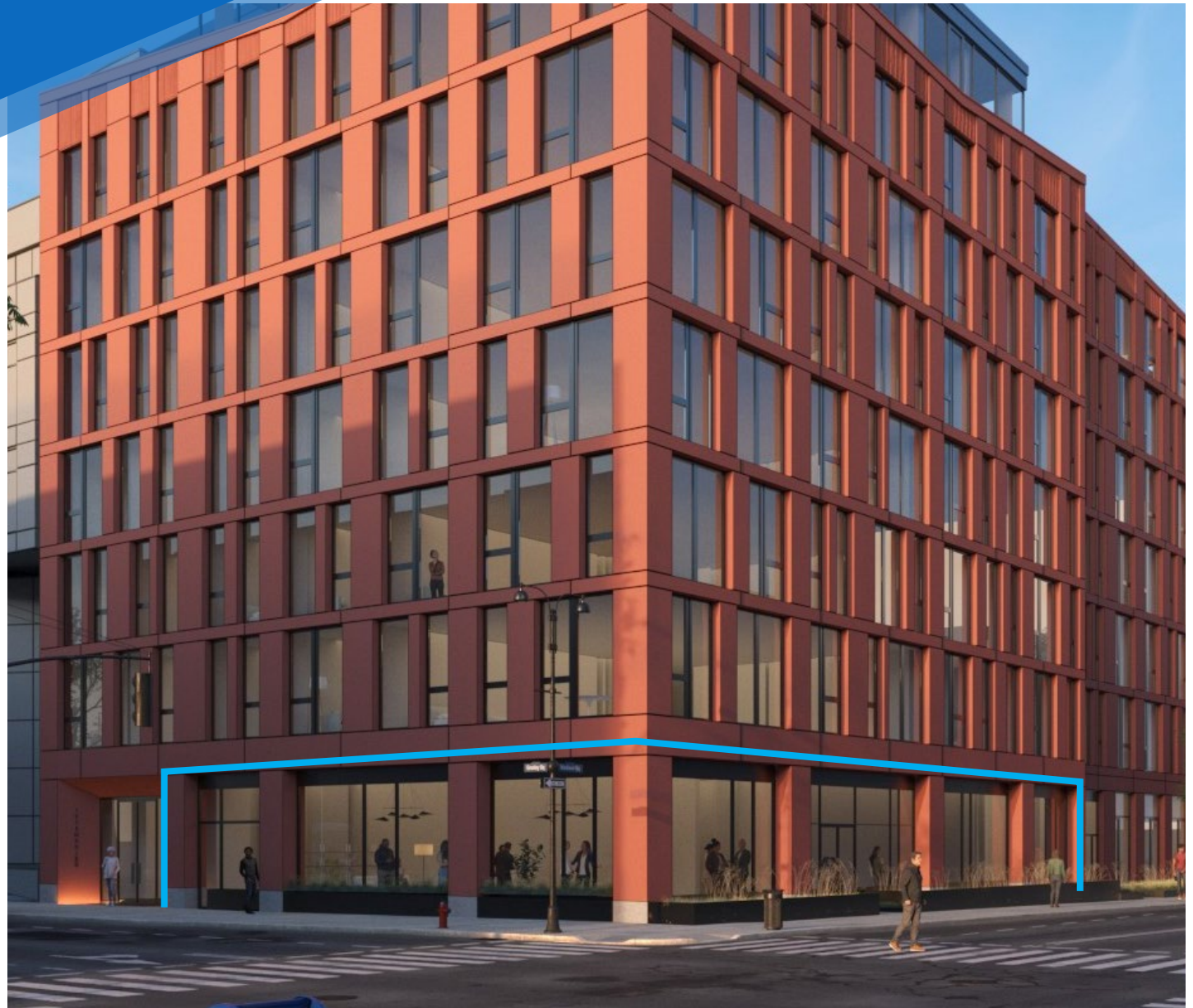
1975

MADISON AVENUE

HARLEM, NYC

Corner of Madison Avenue & East 126th Street

COMMUNITY FACILITY FOR LEASE



PROPERTY INFORMATION

APPROXIMATE SIZE

2,500 SF

ASKING RENT

\$12,500/Month

POSSESSION

Summer 2025

TERM

5-15 Years

FRONTAGE

100+ FT Wraparound

COMMENTS

- New corner development with high ceilings and an open floor plan
- Community facility space ideal for daycare or medical uses
- Close proximity to transportation

NEIGHBORS

TJ Maxx • Nike • Shake Shack • Harlem Children's Zone • Baskin Robbins • Dunkin' • Harlem Nail Bar • Edible Arrangements

TRANSPORTATION

2 3 6

JAMES FAMULARO

President

DANE HARLOWE

Director

212.468.5966

dharlowe@meridiancapital.com

NOAM AZIZ

Director

212.468.5984

naziz@meridiancapital.com

CORY RYWALT

Associate

212.468.5973

crywalt@meridiancapital.com



MERIDIAN
RETAIL LEASING

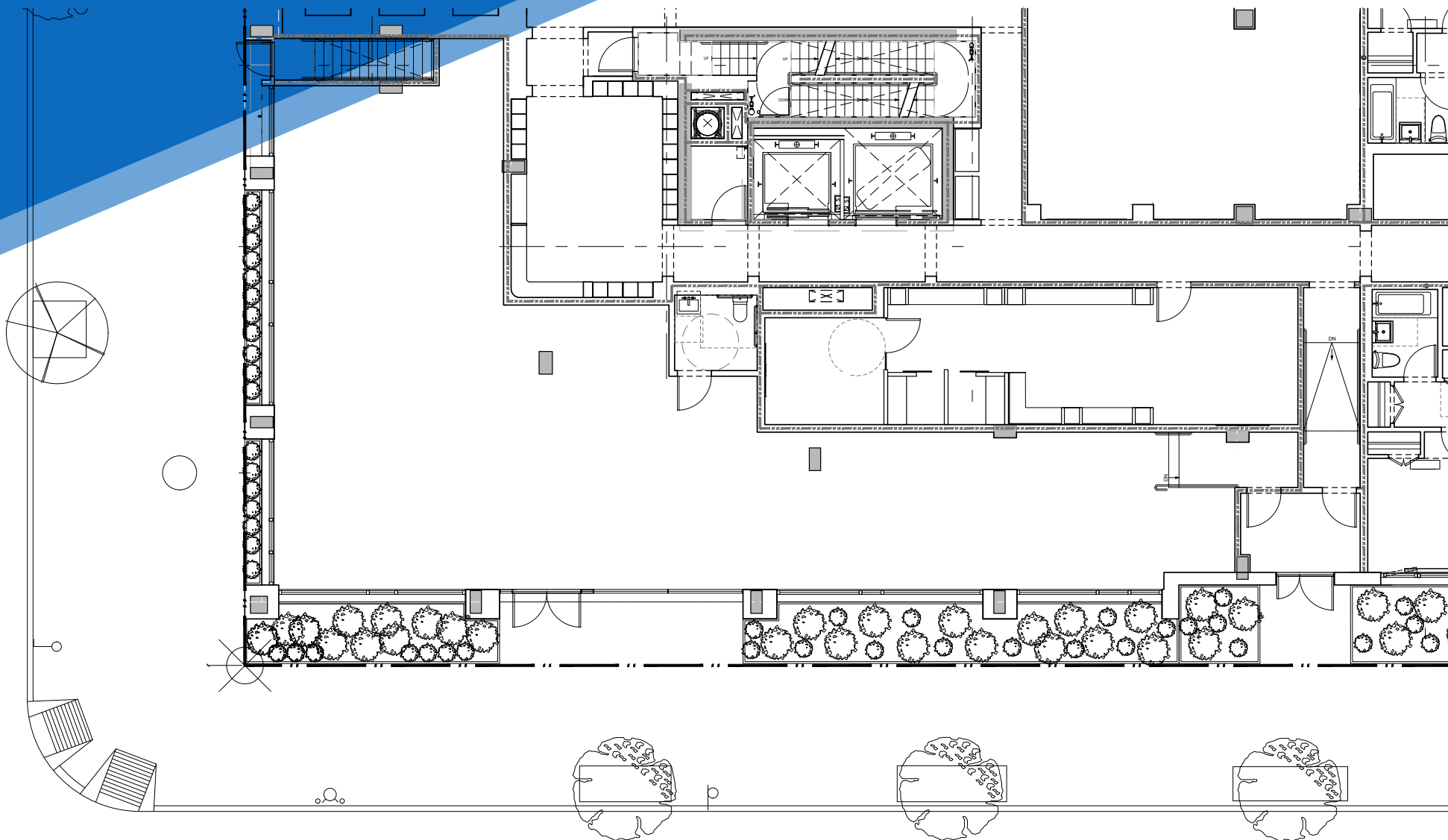
All information supplied is from sources deemed reliable and is furnished subject to errors, omissions, modifications, removal of the listing from sale or lease, and to any listing conditions, including the rates and manner of payment of commissions for particular offerings imposed by Meridian Capital Group. This information may include estimates and projections prepared by Meridian Capital Group with respect to future events, and these future events may or may not actually occur. Such estimates and projections reflect various assumptions concerning anticipated results. While Meridian Capital Group believes these assumptions are reasonable, there can be no assurance that any of these estimates and projections will be correct. Therefore, actual results may vary materially from these estimates and projections. Any square footage dimensions set forth are approximate.

1975 MADISON AVENUE

HARLEM, NYC | Corner of Madison Avenue and East 126th Street

COMMUNITY FACILITY FOR LEASE

FLOOR PLAN



JAMES FAMULARO
President

DANE HARLOWE
Director
212.468.5966
dharlowe@meridiancapital.com

NOAM AZIZ
Director
212.468.5984
naziz@meridiancapital.com

CORY RYWALT
Associate
212.468.5973
crywalt@meridiancapital.com



MERIDIAN
RETAIL LEASING

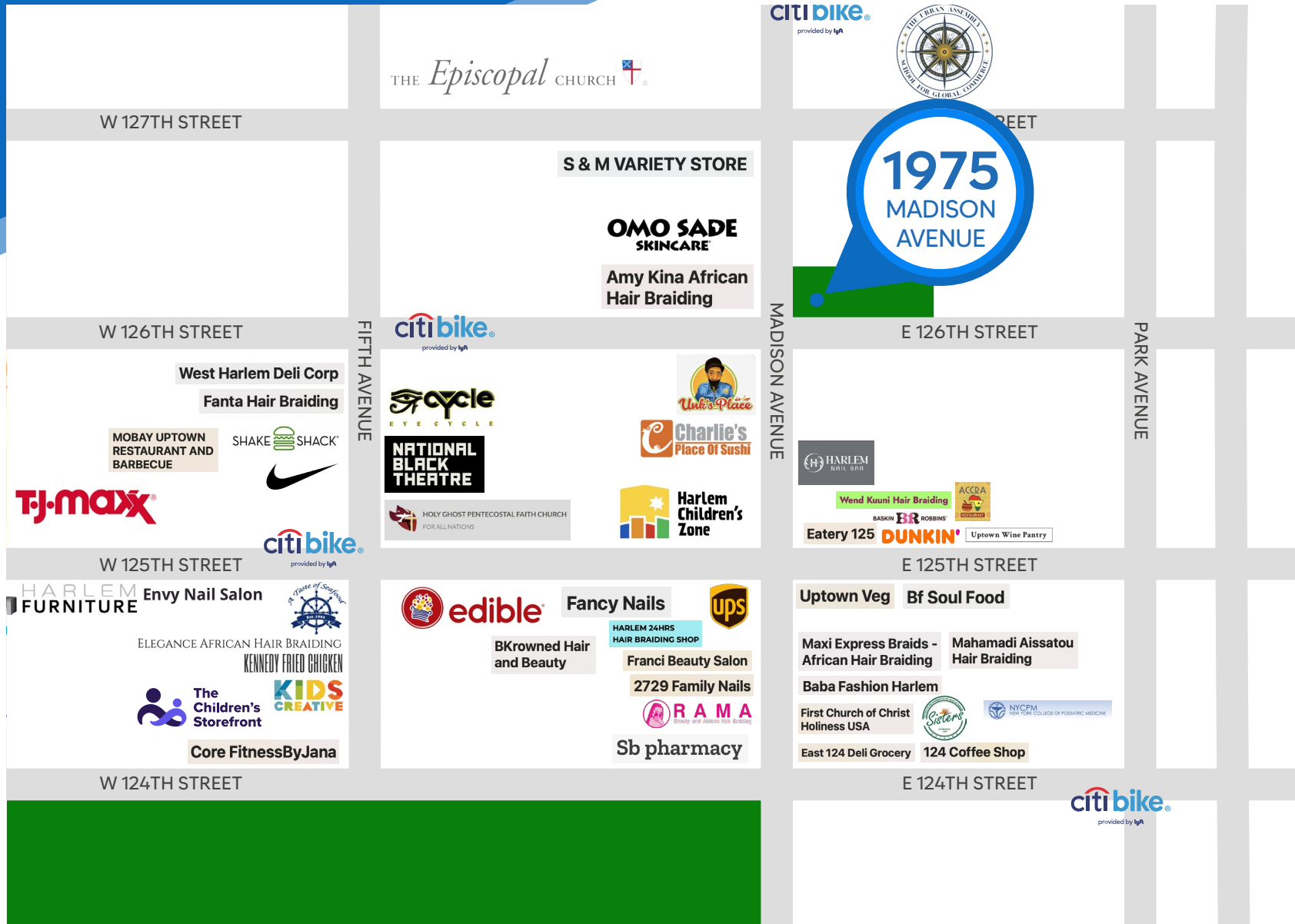
All information supplied is from sources deemed reliable and is furnished subject to errors, omissions, modifications, removal of the listing from sale or lease, and to any listing conditions, including the rates and manner of payment of commissions for particular offerings imposed by Meridian Capital Group. This information may include estimates and projections prepared by Meridian Capital Group with respect to future events, and these future events may or may not actually occur. Such estimates and projections reflect various assumptions concerning anticipated results. While Meridian Capital Group believes these assumptions are reasonable, there can be no assurance that any of these estimates and projections will be correct. Therefore, actual results may vary materially from these estimates and projections. Any square footage dimensions set forth are approximate.

1975 MADISON AVNEUE

HARLEM, NYC | Corner of Madison Avenue and East 126th Street

COMMUNITY FACILITY FOR LEASE

NEIGHBORS



JAMES FAMULARO
President

DANE HARLOWE
Director
212.468.5966
dharlowe@meridiancapital.com

NOAM AZIZ
Director
212.468.5984
naziz@meridiancapital.com

CORY RYWALT
Associate
212.468.5973
crywalt@meridiancapital.com



MERIDIAN
RETAIL LEASING

All information supplied is from sources deemed reliable and is furnished subject to errors, omissions, modifications, removal of the listing from sale or lease, and to any listing conditions, including the rates and manner of payment of commissions for particular offerings imposed by Meridian Capital Group. This information may include estimates and projections prepared by Meridian Capital Group with respect to future events, and these future events may or may not actually occur. Such estimates and projections reflect various assumptions concerning anticipated results. While Meridian Capital Group believes these assumptions are reasonable, there can be no assurance that any of these estimates and projections will be correct. Therefore, actual results may vary materially from these estimates and projections. Any square footage dimensions set forth are approximate.