

# 80

## JOHN STREET FINANCIAL DISTRICT, NYC

Southwest Corner of John & Gold Streets

RETAIL FOR LEASE

### APPROXIMATE SIZE

Ground Floor: 1,400 SF

### ASKING RENT

\$10,500/Month

### POSSESSION

Immediate

### TERM

5-10 Years

### FRONTAGE

50 FT Wraparound

### COMMENTS

- Corner retail space with large wraparound windows throughout
- Convenient shared lobby access with Sweat440
- Strong co-tenancy including Stout and Jubilee Market
- Motivated landlord
- All uses considered

### NEIGHBORS

Hey Thai • Carvel • Orange Theory • Harry's Italian • Felice • Orange Theory • Chop & Go • Taco Bell • Stout • Pearl Diner • Playa Bowls

### TRANSPORTATION

2 3 4 5 A C E J Z



JAMES FAMULARO  
President

NOAM AZIZ  
Director  
212.468.5984  
naziz@meridiancapital.com

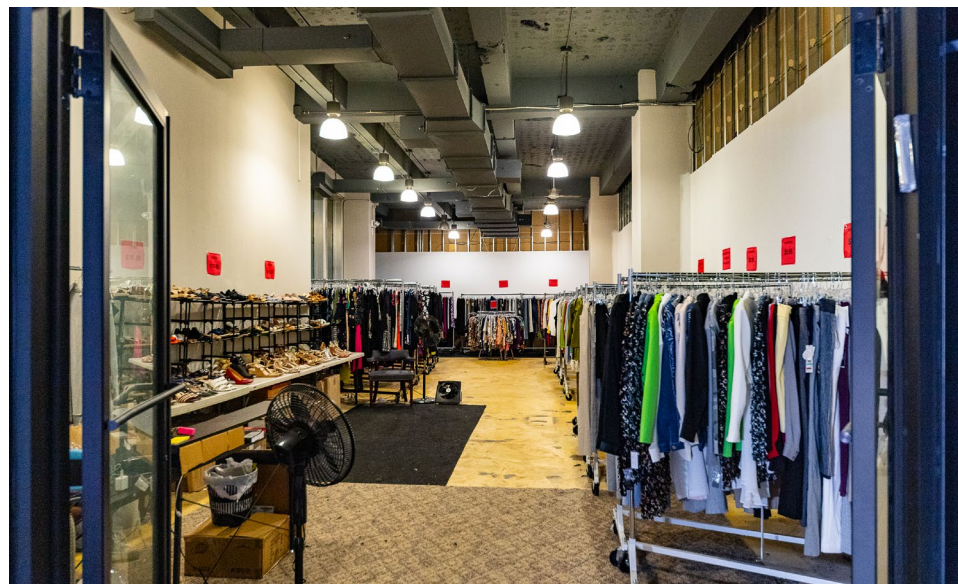
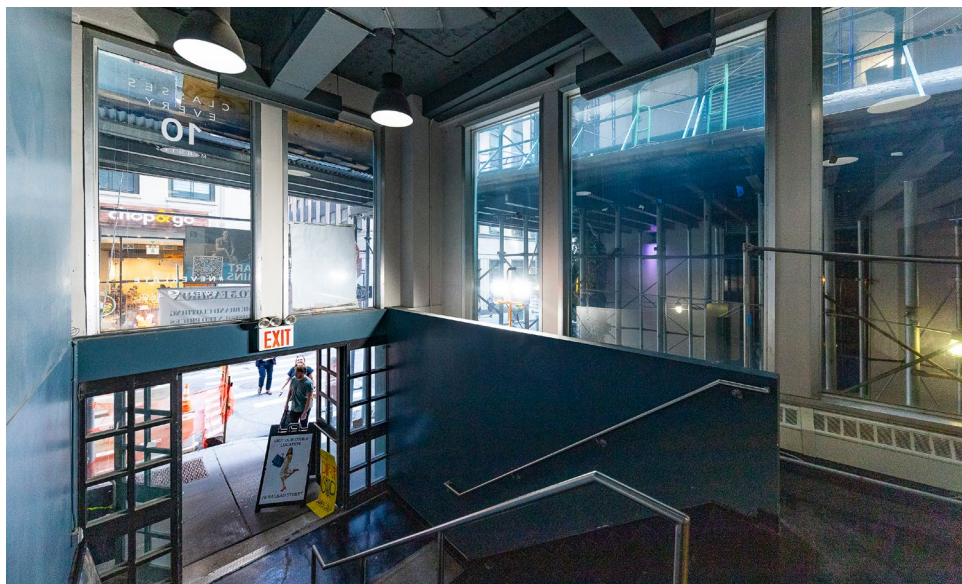
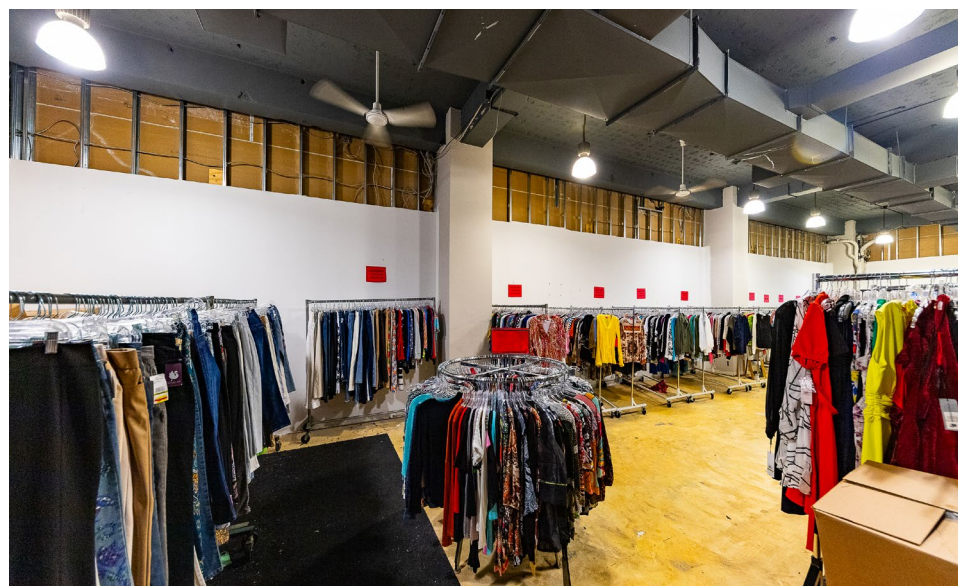
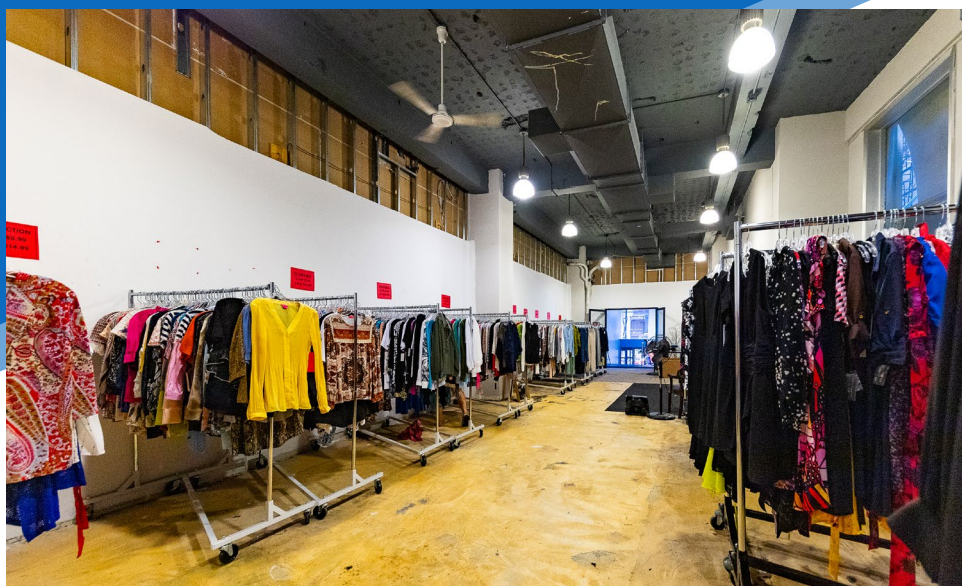
CARSON SHAHRABANI  
Associate  
212.468.5927  
cshahrabani@meridiancapital.com

SARA LAMSTEIN  
Associate  
212.468.5945  
slamstein@meridiancapital.com



All information supplied is from sources deemed reliable and is furnished subject to errors, omissions, modifications, removal of the listing from sale or lease, and to any listing conditions, including the rates and manner of payment of commissions for particular offerings imposed by Meridian Capital Group. This information may include estimates and projections prepared by Meridian Capital Group with respect to future events, and these future events may or may not actually occur. Such estimates and projections reflect various assumptions concerning anticipated results. While Meridian Capital Group believes these assumptions are reasonable, there can be no assurance that any of these estimates and projections will be correct. Therefore, actual results may vary materially from these estimates and projections. Any square footage dimensions set forth are approximate.





INTERIOR

JAMES FAMULARO  
President

NOAM AZIZ  
Director  
212.468.5984  
naziz@meridiancapital.com

CARSON SHAHRABANI  
Associate  
212.468.5927  
cshahrabani@meridiancapital.com

SARA LAMSTEIN  
Associate  
212.468.5945  
slamstein@meridiancapital.com



All information supplied is from sources deemed reliable and is furnished subject to errors, omissions, modifications, removal of the listing from sale or lease, and to any listing conditions, including the rates and manner of payment of commissions for particular offerings imposed by Meridian Capital Group. This information may include estimates and projections prepared by Meridian Capital Group with respect to future events, and these future events may or may not actually occur. Such estimates and projections reflect various assumptions concerning anticipated results. While Meridian Capital Group believes these assumptions are reasonable, there can be no assurance that any of these estimates and projections will be correct. Therefore, actual results may vary materially from these estimates and projections. Any square footage dimensions set forth are approximate.

80 JOHN STREET  
FINANCIAL DISTRICT, NYC | Southwest Corner of John and Gold Streets

RETAIL FOR LEASE

FLOOR PLAN



JAMES FAMULARO  
President

NOAM AZIZ  
Director  
212.468.5984  
naziz@meridiancapital.com

CARSON SHAHRABANI  
Associate  
212.468.5927  
cshahrabani@meridiancapital.com

SARA LAMSTEIN  
Associate  
212.468.5945  
slamstein@meridiancapital.com



MERIDIAN  
RETAIL LEASING

All information supplied is from sources deemed reliable and is furnished subject to errors, omissions, modifications, removal of the listing from sale or lease, and to any listing conditions, including the rates and manner of payment of commissions for particular offerings imposed by Meridian Capital Group. This information may include estimates and projections prepared by Meridian Capital Group with respect to future events, and these future events may or may not actually occur. Such estimates and projections reflect various assumptions concerning anticipated results. While Meridian Capital Group believes these assumptions are reasonable, there can be no assurance that any of these estimates and projections will be correct. Therefore, actual results may vary materially from these estimates and projections. Any square footage dimensions set forth are approximate.



80 JOHN STREET

FINANCIAL DISTRICT, NYC | Southwest Corner of John and Gold Streets

RETAIL FOR LEASE

NEIGHBORS



JAMES FAMULARO  
President

NOAM AZIZ  
Director  
212.468.5984  
naziz@meridiancapital.com

CARSON SHAHRABANI  
Associate  
212.468.5927  
cshahrabani@meridiancapital.com

SARA LAMSTEIN  
Associate  
212.468.5945  
slamstein@meridiancapital.com

 **MERIDIAN**  
RETAIL LEASING

All information supplied is from sources deemed reliable and is furnished subject to errors, omissions, modifications, removal of the listing from sale or lease, and to any listing conditions, including the rates and manner of payment of commissions for particular offerings imposed by Meridian Capital Group. This information may include estimates and projections prepared by Meridian Capital Group with respect to future events, and these future events may or may not actually occur. Such estimates and projections reflect various assumptions concerning anticipated results. While Meridian Capital Group believes these assumptions are reasonable, there can be no assurance that any of these estimates and projections will be correct. Therefore, actual results may vary materially from these estimates and projections. Any square footage dimensions set forth are approximate.