

2500

BARKER AVENUE ALLERTON, BRONX

Corner of Barker & Mace Avenues

COMMUNITY FACILITY FOR LEASE



PROPERTY INFORMATION

APPROXIMATE SIZE

Second Floor: 9,328 SF
(Divisions Possible)

ASKING RENT

Upon Request

POSSESSION

Arranged

TERM

10-20 Years

COMMENTS

- Second floor available in a brand-new luxury development
- Elevator access directly to second floor
- Entrances on both Barker and Mace Avenues
- Steps from Bronx Park and Allerton Avenue Station

NEIGHBORS

- Dunkin' • Key Food • Metro by T-Mobile • Service Q • Celestial Essentials • Hong Kong Restaurant
- McDonald's • Bank of America • Golden Krust
- Public School 96 • Classic Barbershop

TRANSPORTATION

2 5

Bx39

JAMES FAMULARO

President
646.658.7373
jfamularo@meridiancapital.com

BOBBY ORTENSE

Director
212.468.5953
bortense@meridiancapital.com

BEN HAGGARD

Associate
212.468.5952
bhaggard@meridiancapital.com



MERIDIAN
RETAIL LEASING

All information supplied is from sources deemed reliable and is furnished subject to errors, omissions, modifications, removal of the listing from sale or lease, and to any listing conditions, including the rates and manner of payment of commissions for particular offerings imposed by Meridian Capital Group. This information may include estimates and projections prepared by Meridian Capital Group with respect to future events, and these future events may or may not actually occur. Such estimates and projections reflect various assumptions concerning anticipated results. While Meridian Capital Group believes these assumptions are reasonable, there can be no assurance that any of these estimates and projections will be correct. Therefore, actual results may vary materially from these estimates and projections. Any square footage dimensions set forth are approximate.



INTERIOR

JAMES FAMULARO

President
646.658.7373
jfamularo@meridiancapital.com

BOBBY ORTENSE

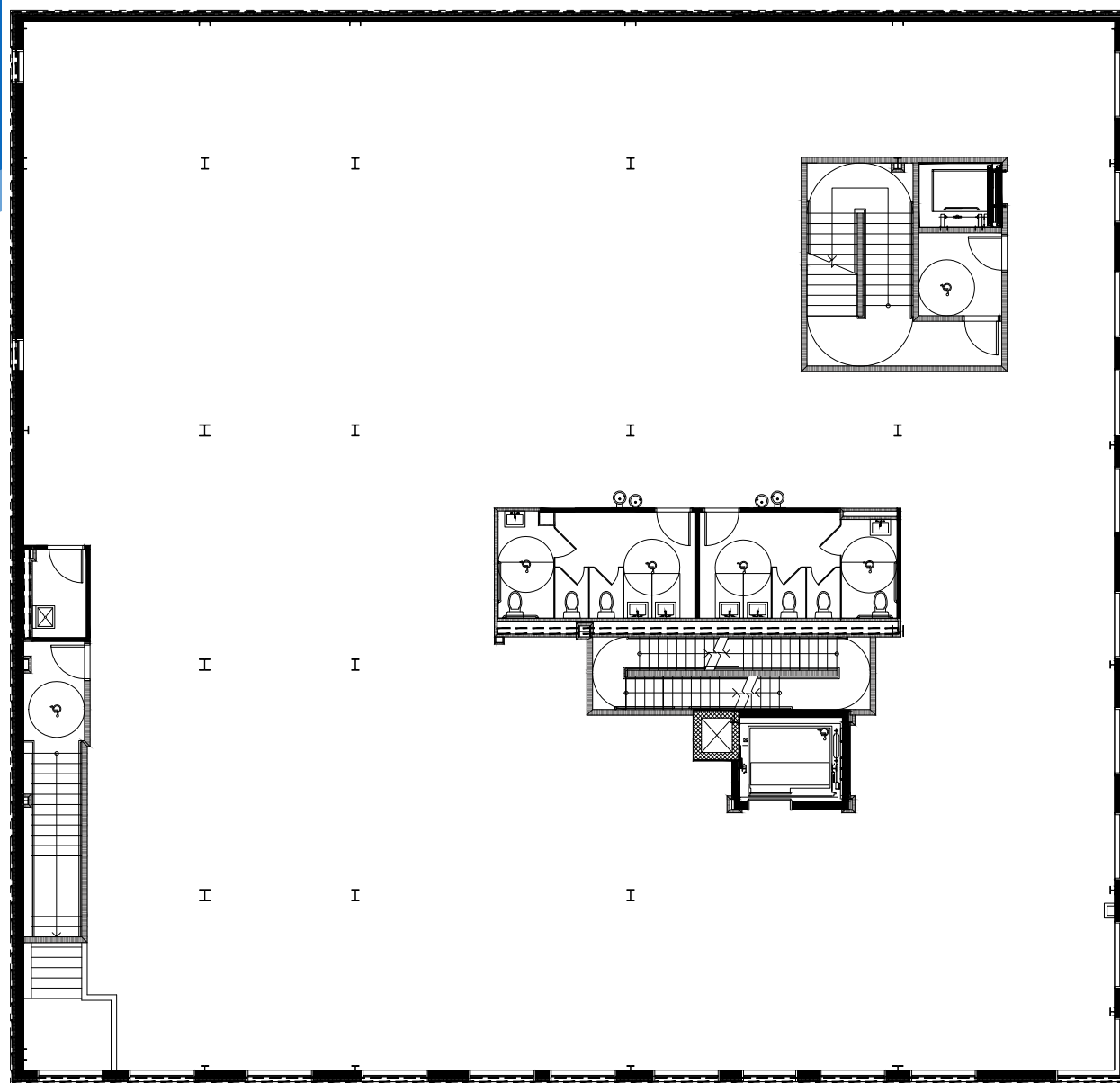
Director
212.468.5953
bortense@meridiancapital.com

BEN HAGGARD

Associate
212.468.5952
bhaggard@meridiancapital.com



**MERIDIAN
RETAIL LEASING**



JAMES FAMULARO

President
646.658.7373
jfamularo@meridiancapital.com

BOBBY ORTENSE

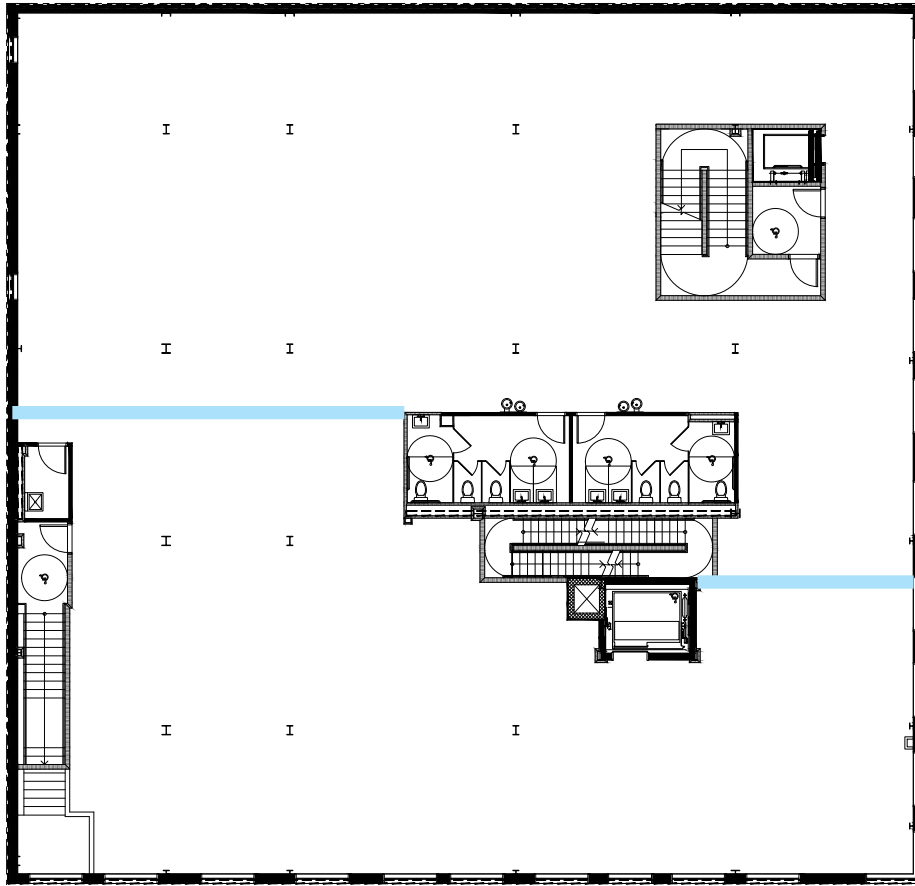
Director
212.468.5953
bortense@meridiancapital.com

BEN HAGGARD

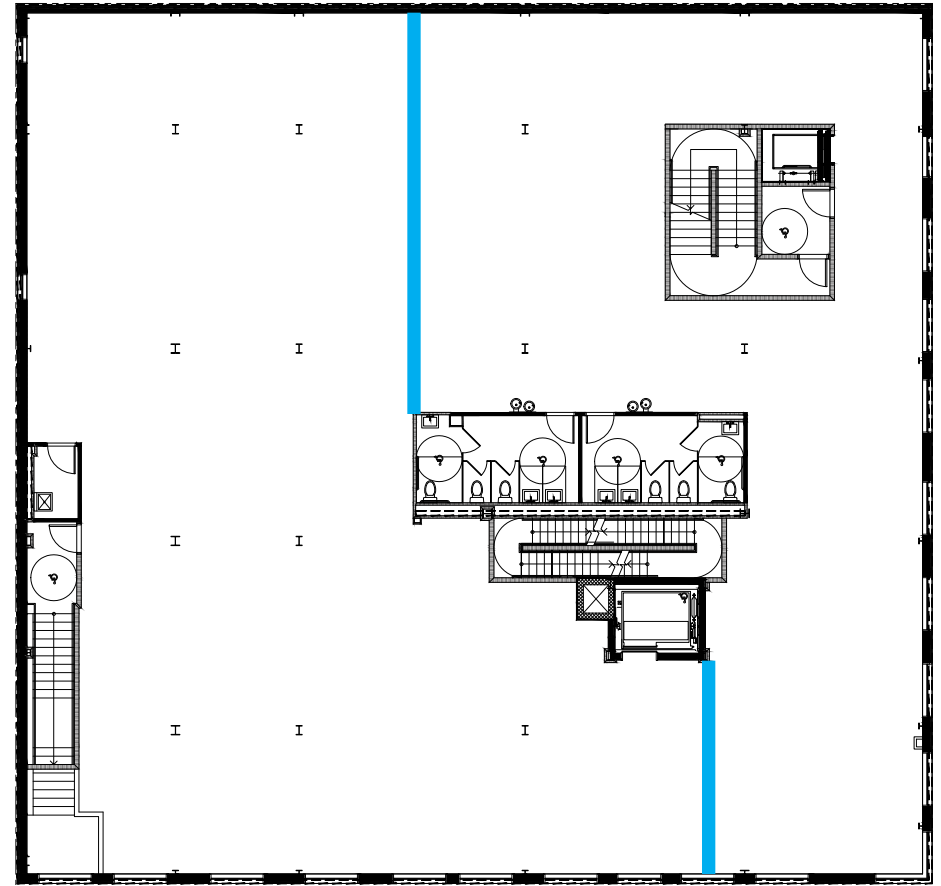
Associate
212.468.5952
bhaggard@meridiancapital.com



MERIDIAN
RETAIL LEASING



OPTION 1



OPTION 2

JAMES FAMULARO

President
646.658.7373
jfamularo@meridiancapital.com

BOBBY ORTENSE

Director
212.468.5953
bortense@meridiancapital.com

BEN HAGGARD

Associate
212.468.5952
bhaggard@meridiancapital.com



MERIDIAN
RETAIL LEASING

2500 BARKER AVENUE

ALLERTON, BRONX | Corner of Barker and Mace Avenues

COMMUNITY FACILITY FOR LEASE



NEIGHBORS

JAMES FAMULARO
 President
 646.658.7373
 jfamularo@meridiancapital.com

BOBBY ORTENSE
 Director
 212.468.5953
 bortense@meridiancapital.com

BEN HAGGARD
 Associate
 212.468.5952
 bhaggard@meridiancapital.com



MERIDIAN
 RETAIL LEASING

All information supplied is from sources deemed reliable and is furnished subject to errors, omissions, modifications, removal of the listing from sale or lease, and to any listing conditions, including the rates and manner of payment of commissions for particular offerings imposed by Meridian Capital Group. This information may include estimates and projections prepared by Meridian Capital Group with respect to future events, and these future events may or may not actually occur. Such estimates and projections reflect various assumptions concerning anticipated results. While Meridian Capital Group believes these assumptions are reasonable, there can be no assurance that any of these estimates and projections will be correct. Therefore, actual results may vary materially from these estimates and projections. Any square footage dimensions set forth are approximate.