

266

CANAL STREET TRIBECA/SOHO, NYC

Between Cortlandt Alley & Lafayette Street

RESTAURANT FOR LEASE

APPROXIMATE SIZE

Ground Floor: 2,100 SF
Full Basement

ASKING RENT

~~\$35,000/Month~~ Reduced
\$32,500/Month

POSSESSION

Arranged

TERM

10-15 Years

FRONTAGE

20 FT

COMMENTS

- Second generation restaurant on the cusp of Tribeca/SoHo/Chinatown
- Turn-key with prep + walk-in boxes in basement
- Prime location on Canal Street
- Heavy foot traffic and popular tourist area

NEIGHBORS

Nine Moons • Le Coucou • Kung Fu Tea • Añejo Tribeca • Foundrae • Teddy Blake • With Jean • Sea • La Colombe • The Ness • Maison Margiela • 260 Sample Sale • Blue Bottle Coffee • Au Cheval

TRANSPORTATION

1 2 3 B D N Q R W 6 A C E J Z



PROPERTY INFORMATION

JAMES FAMULARO

President
646.658.7373
jfamularo@meridiancapital.com

BOBBY ORTENSE

Director
212.468.5953
bortense@meridiancapital.com

MYLES VANDELL

Associate
212.468.5975
mvandell@meridiancapital.com

JOSH AUGENBAUM

Augenbaum Realty

ARC AUGENBAUM
REALTY CORP.

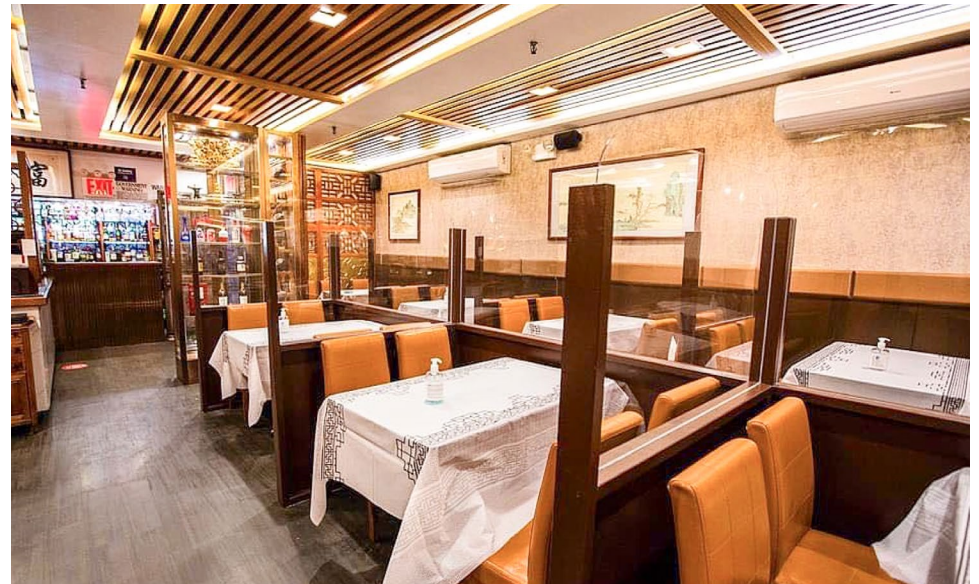
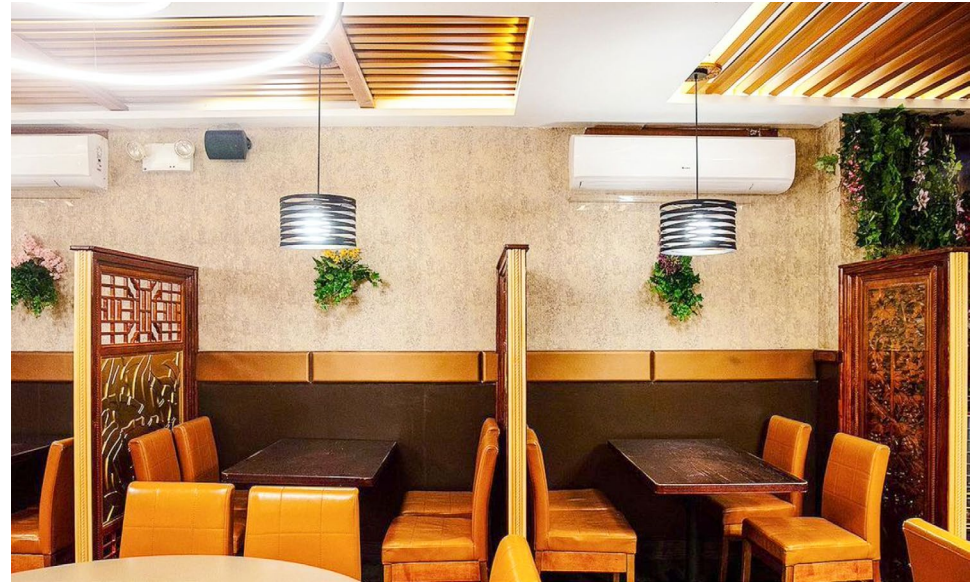
MERIDIAN
RETAIL LEASING

All information supplied is from sources deemed reliable and is furnished subject to errors, omissions, modifications, removal of the listing from sale or lease, and to any listing conditions, including the rates and manner of payment of commissions for particular offerings imposed by Meridian Capital Group. This information may include estimates and projections prepared by Meridian Capital Group with respect to future events, and these future events may or may not actually occur. Such estimates and projections reflect various assumptions concerning anticipated results. While Meridian Capital Group believes these assumptions are reasonable, there can be no assurance that any of these estimates and projections will be correct. Therefore, actual results may vary materially from these estimates and projections. Any square footage dimensions set forth are approximate.

266 CANAL STREET

TRIBECA/SOHO, NYC | Between Cortlandt Alley and Lafayette Street

RESTAURANT FOR LEASE



INTERIOR

JAMES FAMULARO

President
646.658.7373
jfamularo@meridiancapital.com

BOBBY ORTENSE

Director
212.468.5953
bortense@meridiancapital.com

MYLES VANDELL

Associate
212.468.5975
mvandell@meridiancapital.com

JOSH AUGENBAUM

Augenbaum Realty



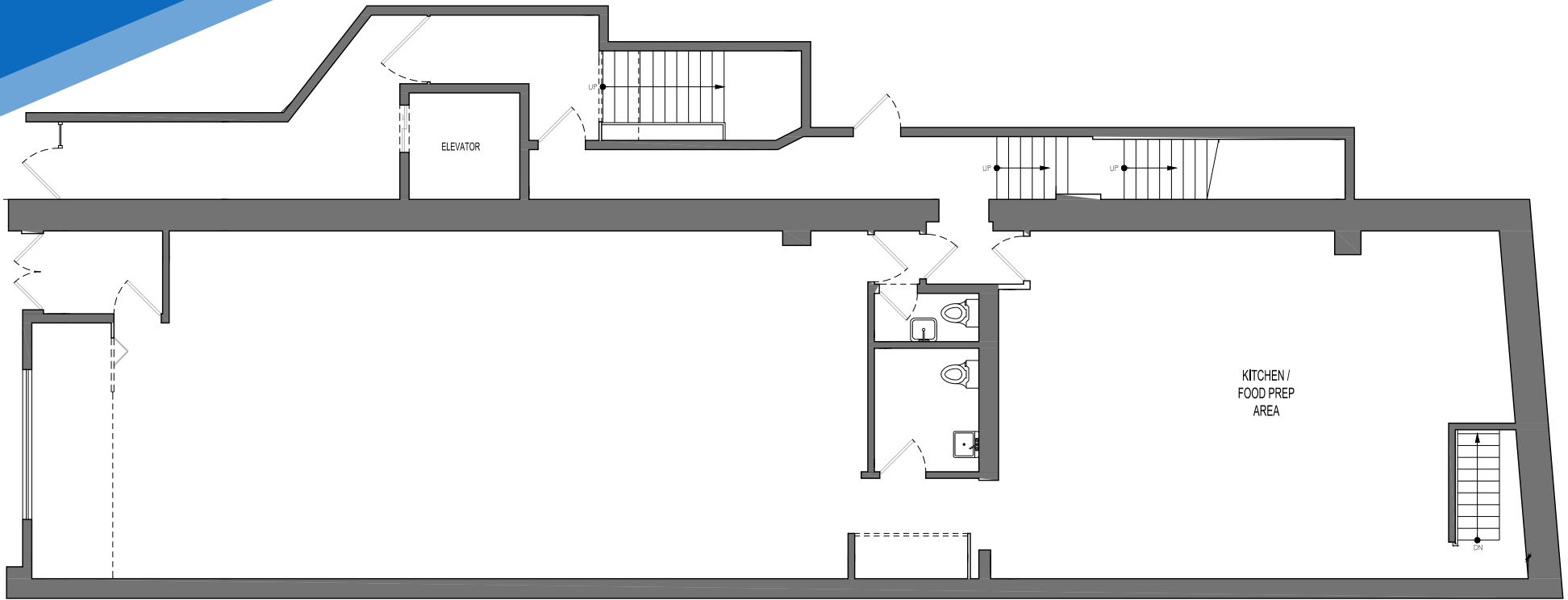
All information supplied is from sources deemed reliable and is furnished subject to errors, omissions, modifications, removal of the listing from sale or lease, and to any listing conditions, including the rates and manner of payment of commissions for particular offerings imposed by Meridian Capital Group. This information may include estimates and projections prepared by Meridian Capital Group with respect to future events, and these future events may or may not actually occur. Such estimates and projections reflect various assumptions concerning anticipated results. While Meridian Capital Group believes these assumptions are reasonable, there can be no assurance that any of these estimates and projections will be correct. Therefore, actual results may vary materially from these estimates and projections. Any square footage dimensions set forth are approximate.

266 CANAL STREET

TRIBECA/SOHO, NYC | Between Cortlandt Alley and Lafayette Street

RESTAURANT FOR LEASE

FLOOR PLAN | GROUND FLOOR



JAMES FAMULARO

President
646.658.7373
jfamularo@meridiancapital.com

BOBBY ORTENSE

Director
212.468.5953
bortense@meridiancapital.com

MYLES VANDELL

Associate
212.468.5975
mvandell@meridiancapital.com

JOSH AUGENBAUM

Augenbaum Realty



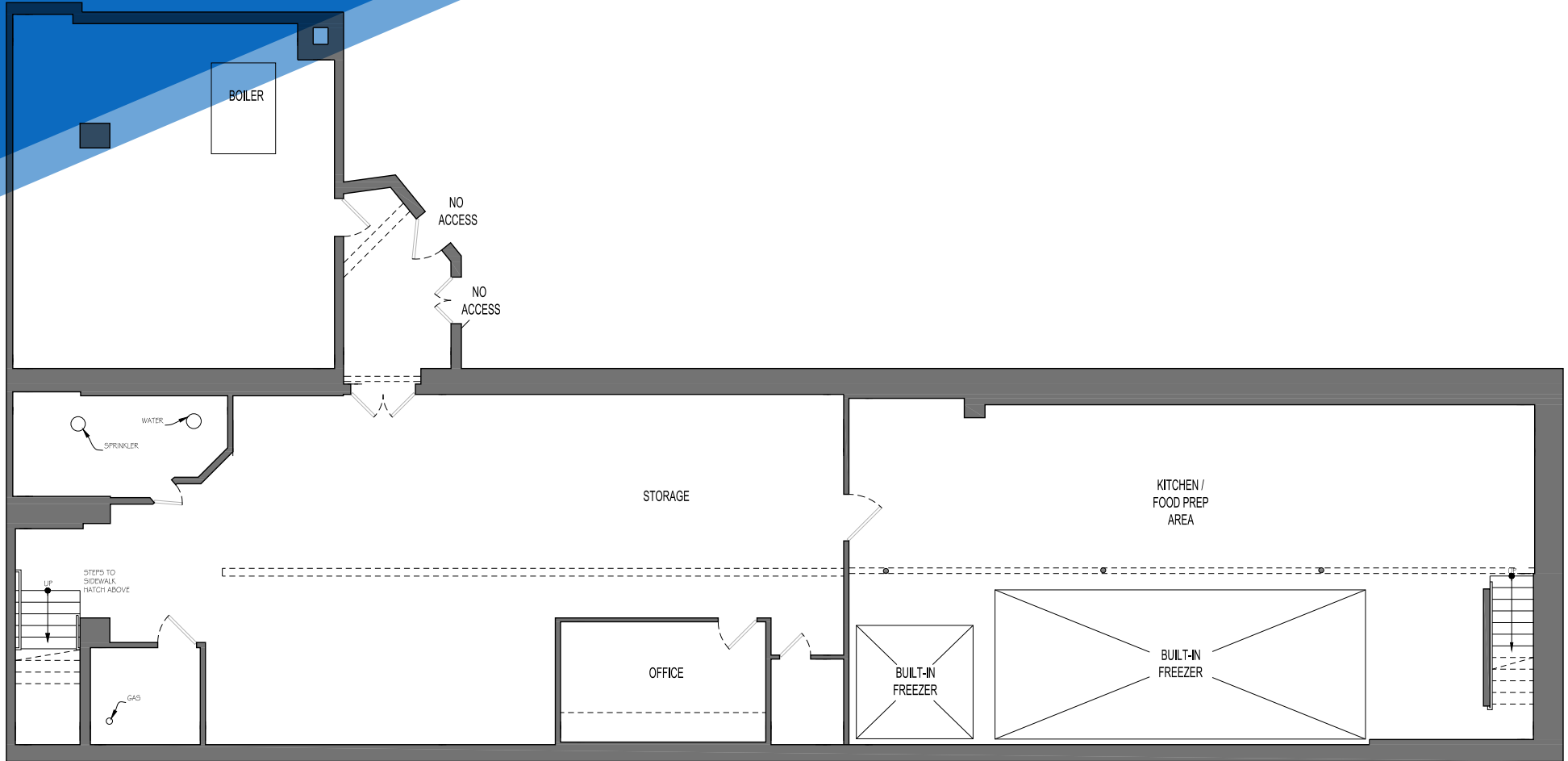
All information supplied is from sources deemed reliable and is furnished subject to errors, omissions, modifications, removal of the listing from sale or lease, and to any listing conditions, including the rates and manner of payment of commissions for particular offerings imposed by Meridian Capital Group. This information may include estimates and projections prepared by Meridian Capital Group with respect to future events, and these future events may or may not actually occur. Such estimates and projections reflect various assumptions concerning anticipated results. While Meridian Capital Group believes these assumptions are reasonable, there can be no assurance that any of these estimates and projections will be correct. Therefore, actual results may vary materially from these estimates and projections. Any square footage dimensions set forth are approximate.

266 CANAL STREET

TRIBECA/SOHO, NYC | Between Cortlandt Alley and Lafayette Street

RESTAURANT FOR LEASE

FLOOR PLAN | BASEMENT



JAMES FAMULARO

President
646.658.7373
jfamularo@meridiancapital.com

BOBBY ORTENSE

Director
212.468.5953
bortense@meridiancapital.com

MYLES VANDELL

Associate
212.468.5975
mvandell@meridiancapital.com

JOSH AUGENBAUM

Augenbaum Realty

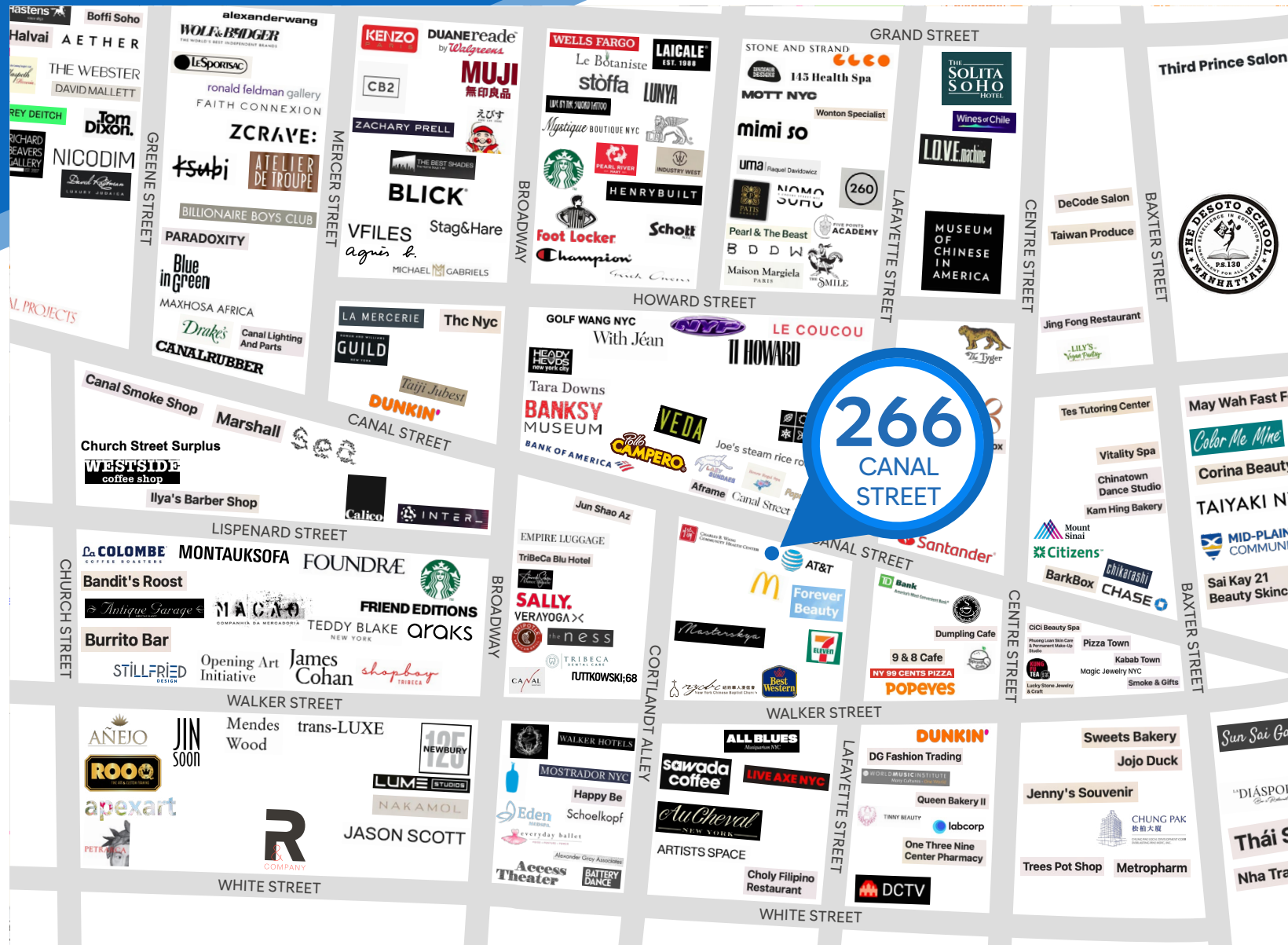


All information supplied is from sources deemed reliable and is furnished subject to errors, omissions, modifications, removal of the listing from sale or lease, and to any listing conditions, including the rates and manner of payment of commissions for particular offerings imposed by Meridian Capital Group. This information may include estimates and projections prepared by Meridian Capital Group with respect to future events, and these future events may or may not actually occur. Such estimates and projections reflect various assumptions concerning anticipated results. While Meridian Capital Group believes these assumptions are reasonable, there can be no assurance that any of these estimates and projections will be correct. Therefore, actual results may vary materially from these estimates and projections. Any square footage dimensions set forth are approximate.

266 CANAL STREET

TRIBECA/SOHO, NYC | Between Cortlandt Alley and Lafayette Street

RESTAURANT FOR LEASE



NEIGHBORS

JAMES FAMULARO

President
646.658.7373
jfamularo@meridiancapital.com

BOBBY ORTENSE

Director
212.468.5953
bortense@meridiancapital.com

MYLES VANDELL

Associate
212.468.5975
mvandell@meridiancapital.com

JOSH AUGENBAUM

Augenbaum Realty



All information supplied is from sources deemed reliable and is furnished subject to errors, omissions, modifications, removal of the listing from sale or lease, and to any listing conditions, including the rates and manner of payment of commissions for particular offerings imposed by Meridian Capital Group. This information may include estimates and projections prepared by Meridian Capital Group with respect to future events, and these future events may or may not actually occur. Such estimates and projections reflect various assumptions concerning anticipated results. While Meridian Capital Group believes these assumptions are reasonable, there can be no assurance that any of these estimates and projections will be correct. Therefore, actual results may vary materially from these estimates and projections. Any square footage dimensions set forth are approximate.