

664

SIXTH AVENUE FLATIRON, NYC

Between West 20th & 21st Streets

RETAIL FOR LEASE

APPROXIMATE SIZE

Second Floor: 1,000 SF

ASKING RENT

\$8,000/Month

POSSESSION

Immediate

TERM

10-15 Years

FRONTAGE

20 FT

COMMENTS

- Move-in ready retail space
- Natural light
- Prime location with heavy foot traffic and strong co-tenancy
- Steps from the Flatiron building

NEIGHBORS

Sophie's Cuban Cuisine • mazete • Bounce • Slate • Trader Joe's • Michael's • Glosslab • Ralph's Coffee • Jue Lan Club • Pure Barre • Barry's

TRANSPORTATION

1 2 3 B D F M A C E



PROPERTY INFORMATION

JAMES FAMULARO

President
646.658.7373
jfamularo@meridiancapital.com

JACOB MAYER

Associate
212.468.5926
jmayer@meridiancapital.com

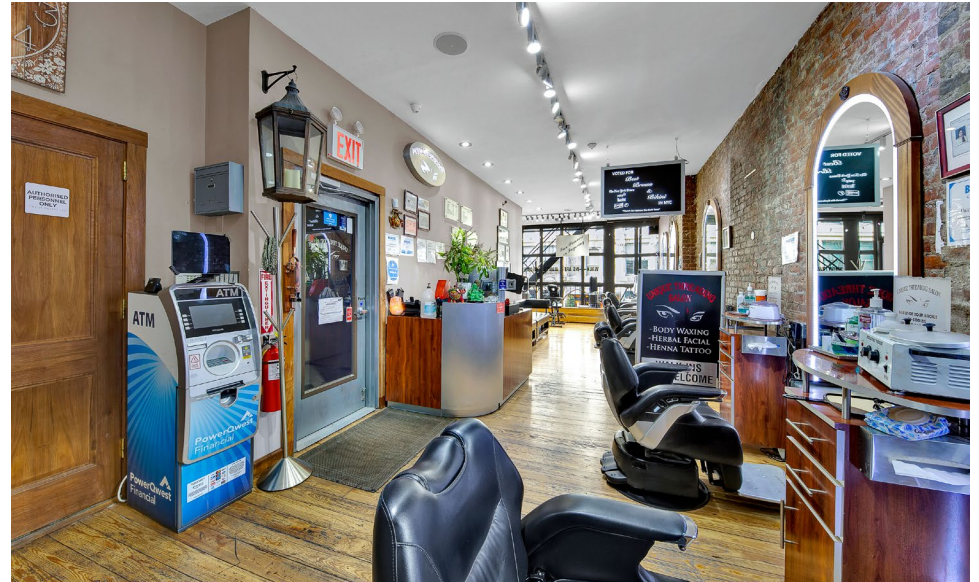
 **MERIDIAN**
RETAIL LEASING

All information supplied is from sources deemed reliable and is furnished subject to errors, omissions, modifications, removal of the listing from sale or lease, and to any listing conditions, including the rates and manner of payment of commissions for particular offerings imposed by Meridian Capital Group. This information may include estimates and projections prepared by Meridian Capital Group with respect to future events, and these future events may or may not actually occur. Such estimates and projections reflect various assumptions concerning anticipated results. While Meridian Capital Group believes these assumptions are reasonable, there can be no assurance that any of these estimates and projections will be correct. Therefore, actual results may vary materially from these estimates and projections. Any square footage dimensions set forth are approximate.

664 SIXTH AVENUE

FLATIRON, NYC | Between West 20th and 21st Streets

RETAIL FOR LEASE



INTERIOR

JAMES FAMULARO

President
646.658.7373
jfamularo@meridiancapital.com

JACOB MAYER

Associate
212.468.5926
jmayer@meridiancapital.com



All information supplied is from sources deemed reliable and is furnished subject to errors, omissions, modifications, removal of the listing from sale or lease, and to any listing conditions, including the rates and manner of payment of commissions for particular offerings imposed by Meridian Capital Group. This information may include estimates and projections prepared by Meridian Capital Group with respect to future events, and these future events may or may not actually occur. Such estimates and projections reflect various assumptions concerning anticipated results. While Meridian Capital Group believes these assumptions are reasonable, there can be no assurance that any of these estimates and projections will be correct. Therefore, actual results may vary materially from these estimates and projections. Any square footage dimensions set forth are approximate.

