

601

WEST 177TH STREET
WASHINGTON HEIGHTS, NYC

Between St. Nicholas & Wadsworth
Avenues

RETAIL FOR LEASE

APPROXIMATE SIZE

660 SF

ASKING RENT

\$7,000/Month

POSSESSION

Immediate

TERM

5-10 Years

FRONTAGE

5 FT

COMMENTS

- White-box retail space
- Bathroom in place
- Strong retail co-tenancy with heavy foot traffic
- National tenants surrounding
- Dry uses only

NEIGHBORS

Taco Bell • Little Caesars • Dunkin' • Marshall's
• Papa John's • European Wax Center • IHop •
Lenox Hill Radiology • Pilon Bar and Restaurant

TRANSPORTATION

1 A C



JAMES FAMULARO
President

DANIEL RACHLINE
Associate
212.468.5956
drachline@meridiancapital.com

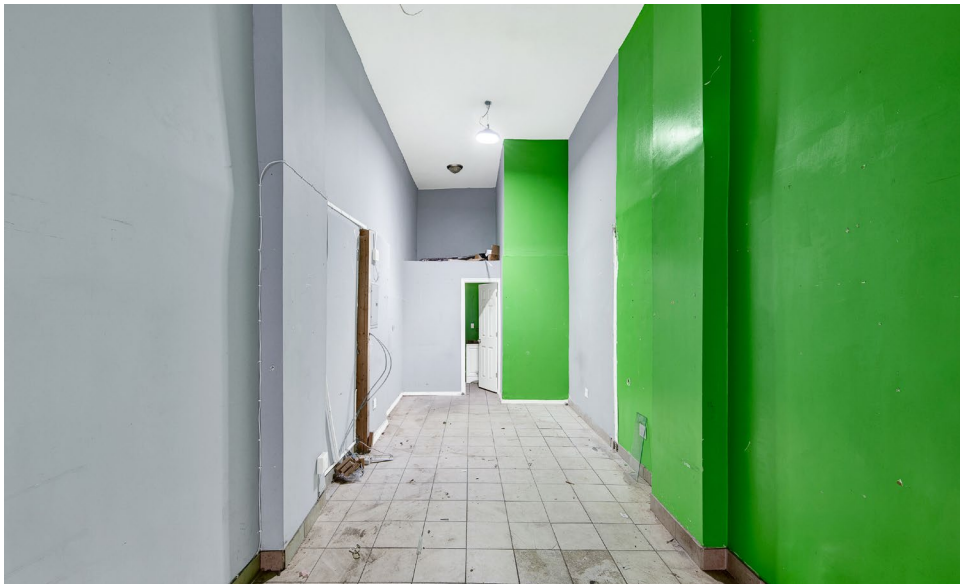
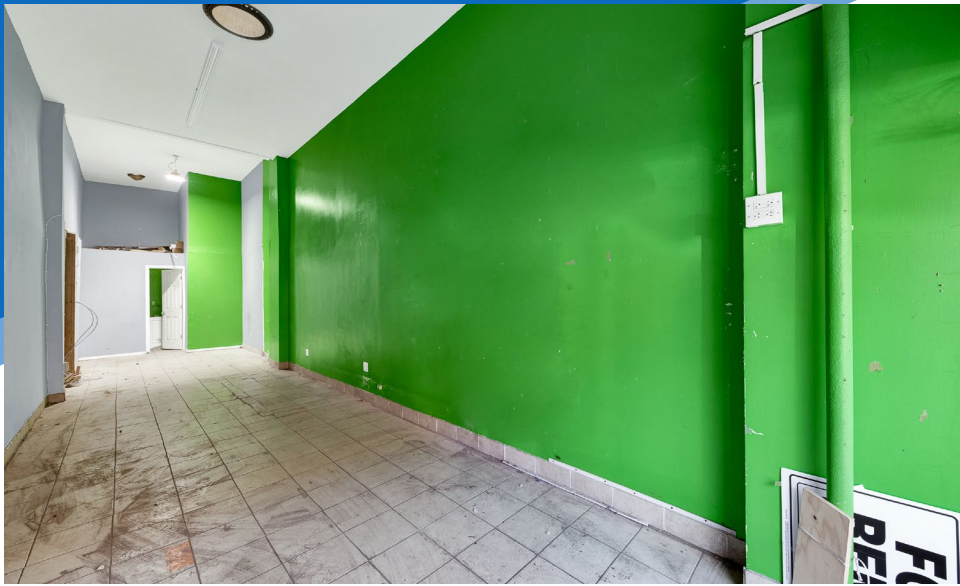
 **MERIDIAN**
RETAIL LEASING

All information supplied is from sources deemed reliable and is furnished subject to errors, omissions, modifications, removal of the listing from sale or lease, and to any listing conditions, including the rates and manner of payment of commissions for particular offerings imposed by Meridian Capital Group. This information may include estimates and projections prepared by Meridian Capital Group with respect to future events, and these future events may or may not actually occur. Such estimates and projections reflect various assumptions concerning anticipated results. While Meridian Capital Group believes these assumptions are reasonable, there can be no assurance that any of these estimates and projections will be correct. Therefore, actual results may vary materially from these estimates and projections. Any square footage dimensions set forth are approximate.

601 WEST 177TH STREET

WASHINGTON HEIGHTS, NYC | Between St. Nicholas and Wadsworth Avenues

RETAIL FOR LEASE



INTERIOR

JAMES FAMULARO
President

DANIEL RACHLINE
Associate
212.468.5956
drachline@meridiancapital.com



All information supplied is from sources deemed reliable and is furnished subject to errors, omissions, modifications, removal of the listing from sale or lease, and to any listing conditions, including the rates and manner of payment of commissions for particular offerings imposed by Meridian Capital Group. This information may include estimates and projections prepared by Meridian Capital Group with respect to future events, and these future events may or may not actually occur. Such estimates and projections reflect various assumptions concerning anticipated results. While Meridian Capital Group believes these assumptions are reasonable, there can be no assurance that any of these estimates and projections will be correct. Therefore, actual results may vary materially from these estimates and projections. Any square footage dimensions set forth are approximate.

601 WEST 177TH STREET

WASHINGTON HEIGHTS, NYC | Between St. Nicholas and Wadsworth Avenues

RETAIL FOR LEASE



NEIGHBORS

JAMES FAMULARO
President

DANIEL RACHLINE
Associate
212.468.5956
drachline@meridiancapital.com



All information supplied is from sources deemed reliable and is furnished subject to errors, omissions, modifications, removal of the listing from sale or lease, and to any listing conditions, including the rates and manner of payment of commissions for particular offerings imposed by Meridian Capital Group. This information may include estimates and projections prepared by Meridian Capital Group with respect to future events, and these future events may or may not actually occur. Such estimates and projections reflect various assumptions concerning anticipated results. While Meridian Capital Group believes these assumptions are reasonable, there can be no assurance that any of these estimates and projections will be correct. Therefore, actual results may vary materially from these estimates and projections. Any square footage dimensions set forth are approximate.