

175-20

HILLSIDE AVENUE JAMAICA, QUEENS

Between 175th & 178th Streets

OFFICE/MEDICAL FOR LEASE

APPROXIMATE SIZE

Second Floor: 2,000 SF

ASKING RENT

Upon Request

POSSESSION

Immediate

TERM

10+ Years

COMMENTS

- Move-in ready medical space with great co-tenancy
- ADA compliant space with elevator access from the ground floor
- Private bathroom in place
- On-site parking

NEIGHBORS

White Castle • Dollar Tree • KFC • Bank of America
• IHOP • CVS Pharmacy • Dunkin' • CTown Market
• Subway • McDonald's • Buffalo Wild Wings

TRANSPORTATION



Q43 **Q54** **Q56** **Q76** **Q77**



JAMES FAMULARO
President

BEN BIBERAJ
Senior Director
703.434.1461
bbiberaj@meridiancapital.com

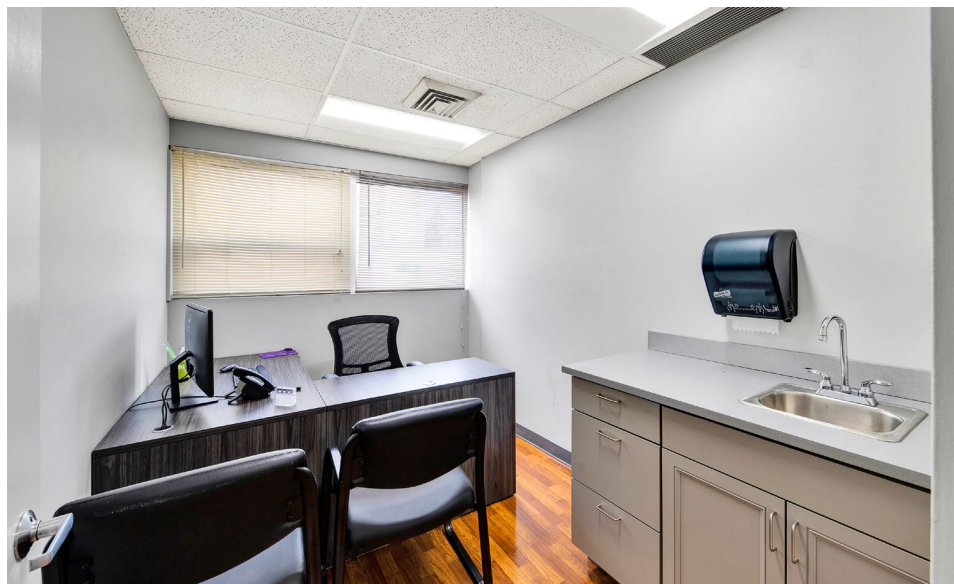
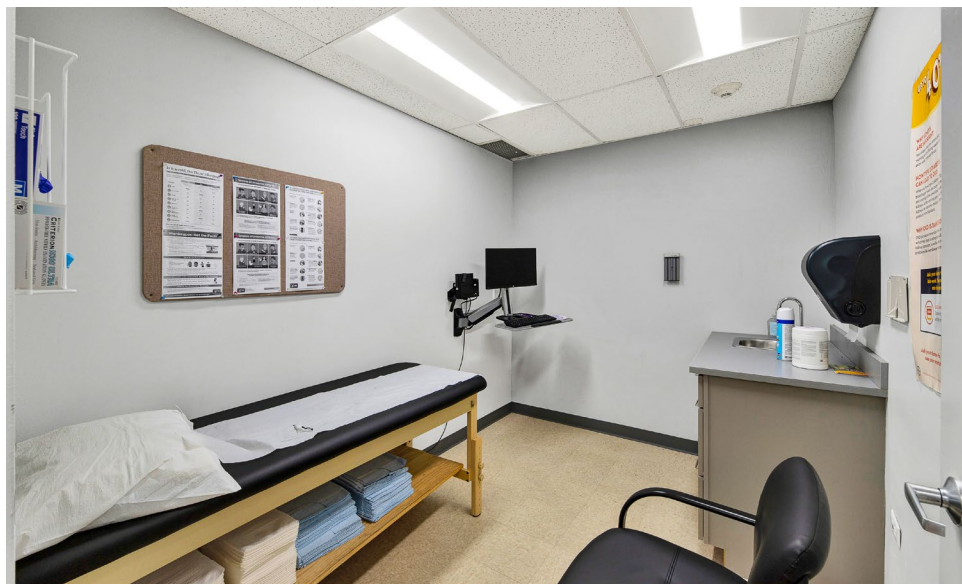
NICK LIZANA
Associate
212.468.5986
nlizana@meridiancapital.com



All information supplied is from sources deemed reliable and is furnished subject to errors, omissions, modifications, removal of the listing from sale or lease, and to any listing conditions, including the rates and manner of payment of commissions for particular offerings imposed by Meridian Capital Group. This information may include estimates and projections prepared by Meridian Capital Group with respect to future events, and these future events may or may not actually occur. Such estimates and projections reflect various assumptions concerning anticipated results. While Meridian Capital Group believes these assumptions are reasonable, there can be no assurance that any of these estimates and projections will be correct. Therefore, actual results may vary materially from these estimates and projections. Any square footage dimensions set forth are approximate.

175-20 HILLSIDE AVENUE
JAMAICA, QUEENS | Between 175th and 178th Streets

OFFICE/MEDICAL FOR LEASE



INTERIOR

JAMES FAMULARO
President

BEN BIBERAJ
Senior Director
703.434.1461
bbiberaj@meridiancapital.com

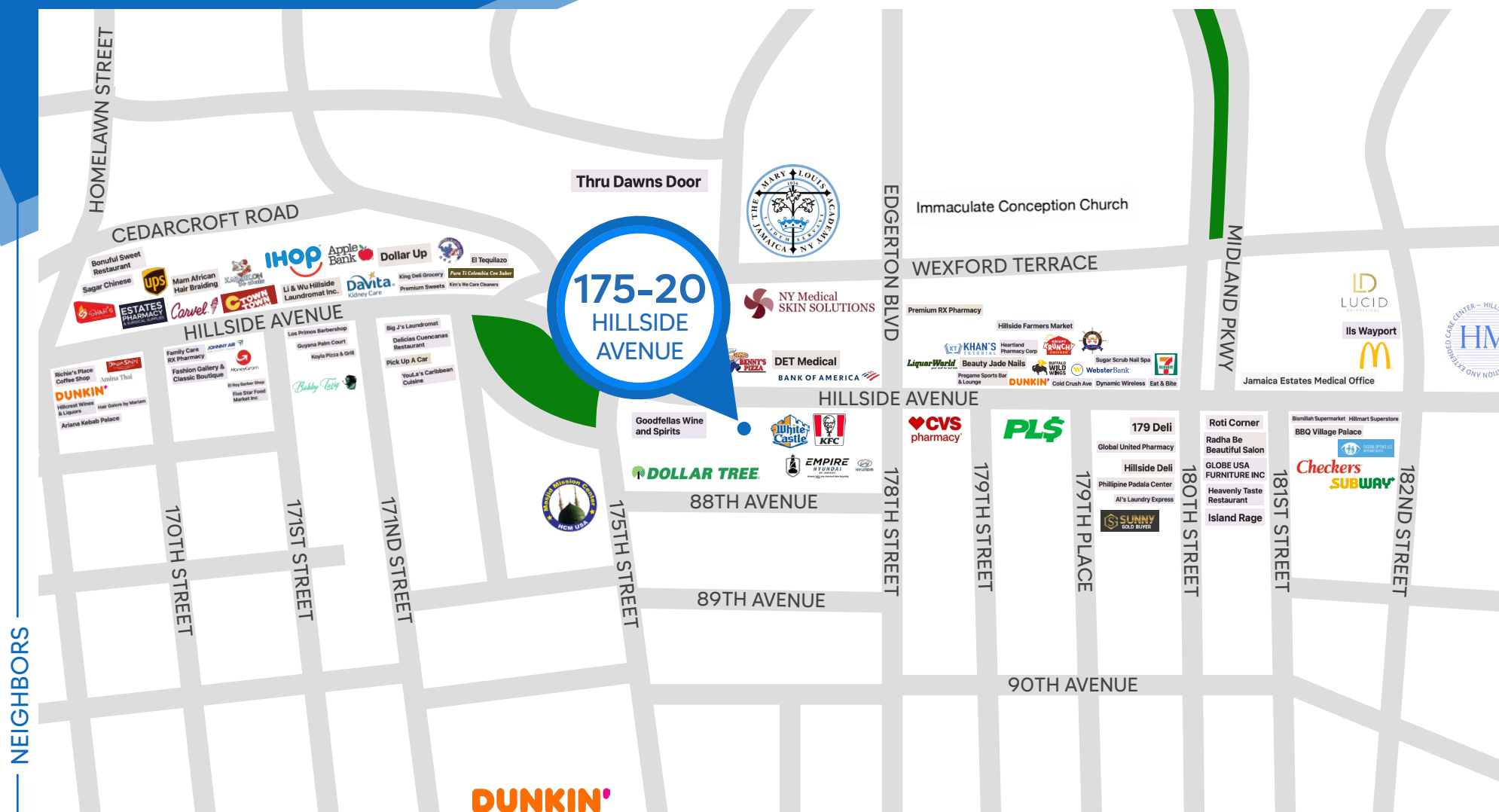
NICK LIZANA
Associate
212.468.5986
nlizana@meridiancapital.com



All information supplied is from sources deemed reliable and is furnished subject to errors, omissions, modifications, removal of the listing from sale or lease, and to any listing conditions, including the rates and manner of payment of commissions for particular offerings imposed by Meridian Capital Group. This information may include estimates and projections prepared by Meridian Capital Group with respect to future events, and these future events may or may not actually occur. Such estimates and projections reflect various assumptions concerning anticipated results. While Meridian Capital Group believes these assumptions are reasonable, there can be no assurance that any of these estimates and projections will be correct. Therefore, actual results may vary materially from these estimates and projections. Any square footage dimensions set forth are approximate.

JAMAICA, QUEENS | Between 175th and 178th Streets

OFFICE/MEDICAL FOR LEASE



JAMES FAMULARO
President

BEN BIBERAJ
Senior Director
703.434.1461
bbiberaj@meridiancapital.com

NICK LIZANA
Associate
212.468.5986
nlizana@meridiancapital.com



All information supplied is from sources deemed reliable and is furnished subject to errors, omissions, modifications, removal of the listing from sale or lease, and to any listing conditions, including the rates and manner of payment of commissions for particular offerings imposed by Meridian Capital Group. This information may include estimates and projections prepared by Meridian Capital Group with respect to future events, and these future events may or may not actually occur. Such estimates and projections reflect various assumptions concerning anticipated results. While Meridian Capital Group believes these assumptions are reasonable, there can be no assurance that any of these estimates and projections will be correct. Therefore, actual results may vary materially from these estimates and projections. Any square footage dimensions set forth are approximate.