

738

BROADWAY NOHO, NYC

Between Waverly Place & East Eighth
Street

RETAIL/RESTAURANT FOR LEASE

APPROXIMATE SIZE

Ground Floor: 1,927 SF
Mezzanine: 207 SF
Lower Level: 1,716 SF

ASKING RENT

Upon Request

POSSESSION

Immediate

TERM

Negotiable

FRONTAGE

10 FT

COMMENTS

- Flagship opportunity
- Clean open-layout space with 15 FT ceilings
- Sound system in place
- Private elevator in place
- All uses considered

NEIGHBORS

Wegman's • Raising Cane's • The Donut Pub •
Indochine • NYU • Rumble • Lifetime Fitness • La
Colombe • Spring Café Aspen • Crunch Fitness
• Sweetgreen • Rocco's Sports Bar • Soulcycle

TRANSPORTATION

R W 4 5 6

M2 M3 M5

JAMES FAMULARO

President
646.658.7373
jfamularo@meridiancapital.com

JORDAN LANGER

Associate
212.468.5977
jlanger@meridiancapital.com



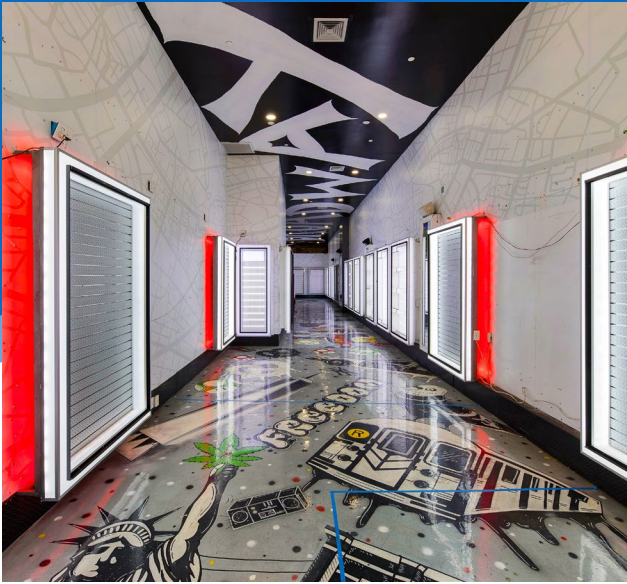
 **MERIDIAN**
RETAIL LEASING

All information supplied is from sources deemed reliable and is furnished subject to errors, omissions, modifications, removal of the listing from sale or lease, and to any listing conditions, including the rates and manner of payment of commissions for particular offerings imposed by Meridian Capital Group. This information may include estimates and projections prepared by Meridian Capital Group with respect to future events, and these future events may or may not actually occur. Such estimates and projections reflect various assumptions concerning anticipated results. While Meridian Capital Group believes these assumptions are reasonable, there can be no assurance that any of these estimates and projections will be correct. Therefore, actual results may vary materially from these estimates and projections. Any square footage dimensions set forth are approximate.

738 BROADWAY

NOHO, NYC | Between Waverly Place and East Eighth Street

RETAIL/RESTAURANT FOR LEASE



INTERIOR

JAMES FAMULARO

President
646.658.7373
jfamularo@meridiancapital.com

JORDAN LANGER

Associate
212.468.5977
jlanger@meridiancapital.com



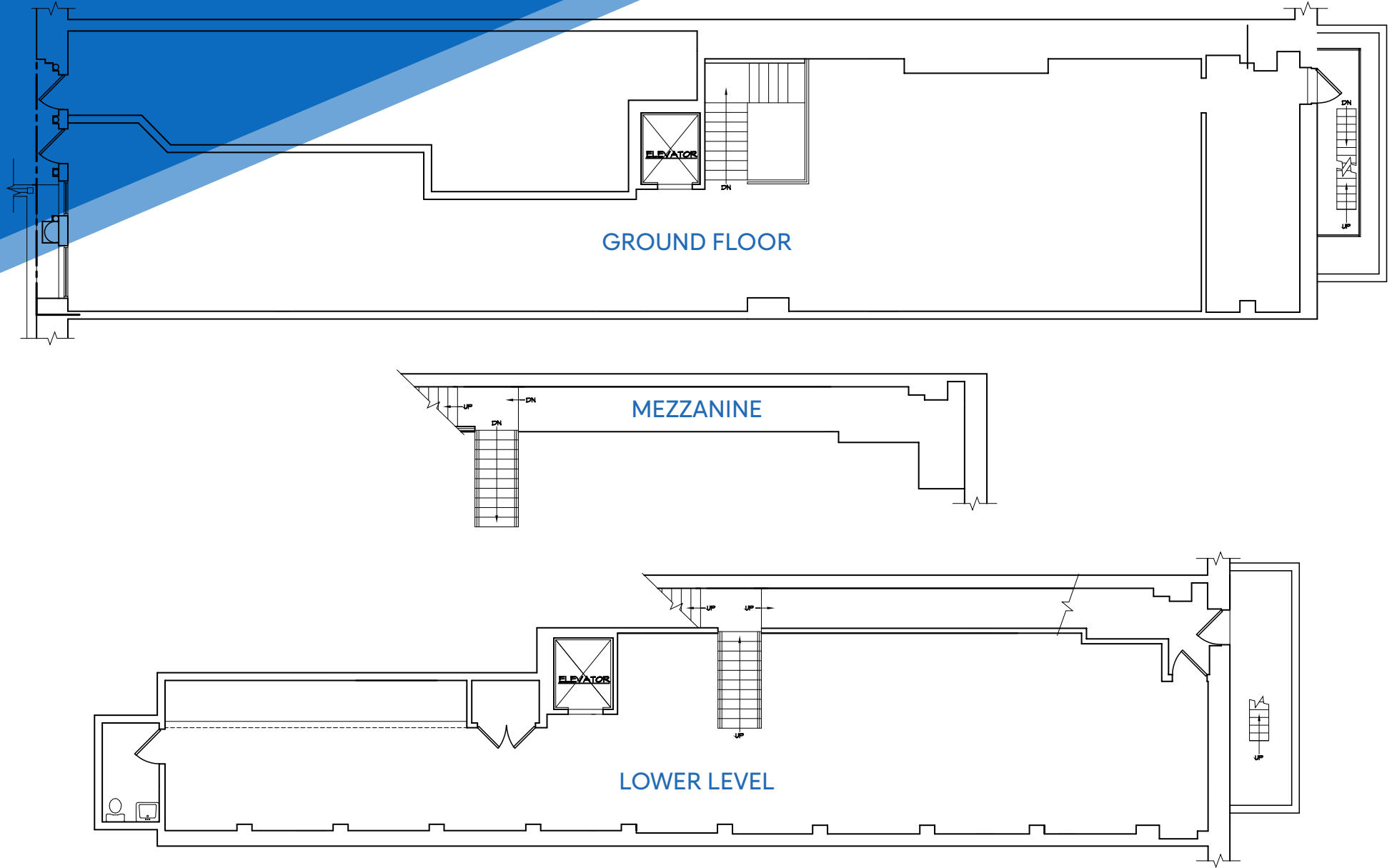
All information supplied is from sources deemed reliable and is furnished subject to errors, omissions, modifications, removal of the listing from sale or lease, and to any listing conditions, including the rates and manner of payment of commissions for particular offerings imposed by Meridian Capital Group. This information may include estimates and projections prepared by Meridian Capital Group with respect to future events, and these future events may or may not actually occur. Such estimates and projections reflect various assumptions concerning anticipated results. While Meridian Capital Group believes these assumptions are reasonable, there can be no assurance that any of these estimates and projections will be correct. Therefore, actual results may vary materially from these estimates and projections. Any square footage dimensions set forth are approximate.

738 BROADWAY

NOHO, NYC | Between Waverly Place and East Eighth Street

RETAIL/RESTAURANT FOR LEASE

FLOOR PLAN



JAMES FAMULARO

President
646.658.7373
jfamularo@meridiantcapital.com

JORDAN LANGER

Associate
212.468.5977
jlanger@meridiantcapital.com



All information supplied is from sources deemed reliable and is furnished subject to errors, omissions, modifications, removal of the listing from sale or lease, and to any listing conditions, including the rates and manner of payment of commissions for particular offerings imposed by Meridian Capital Group. This information may include estimates and projections prepared by Meridian Capital Group with respect to future events, and these future events may or may not actually occur. Such estimates and projections reflect various assumptions concerning anticipated results. While Meridian Capital Group believes these assumptions are reasonable, there can be no assurance that any of these estimates and projections will be correct. Therefore, actual results may vary materially from these estimates and projections. Any square footage dimensions set forth are approximate.

