

504

GREENWICH STREET SOHO, NYC

Between Canal & Spring Streets

RETAIL FOR LEASE



APPROXIMATE SIZE

Ground Floor: 1,200 SF
Lower Level: 2,400 SF

ASKING RENT

\$11,000/Month

POSSESSION

Immediate

TERM

10-15 Years

FRONTAGE

25 FT

COMMENTS

- Move-in ready retail/showroom space
- Steps from Google Headquarters providing heavy daytime foot traffic

NEIGHBORS

Lindens • DogPound • Houseman • Ear Inn • Trader Joe's • Solidcore • Arlo SoHo • Lazy Point • David Yurman • The Mill • Peachy • Maison Close

TRANSPORTATION

1 2 A C E

PROPERTY INFORMATION

JAMES FAMULARO

President
646.658.7373
jfamularo@meridiancapital.com

JACOB MAYER

Associate
212.468.5926
jmayer@meridiancapital.com



All information supplied is from sources deemed reliable and is furnished subject to errors, omissions, modifications, removal of the listing from sale or lease, and to any listing conditions, including the rates and manner of payment of commissions for particular offerings imposed by Meridian Capital Group. This information may include estimates and projections prepared by Meridian Capital Group with respect to future events, and these future events may or may not actually occur. Such estimates and projections reflect various assumptions concerning anticipated results. While Meridian Capital Group believes these assumptions are reasonable, there can be no assurance that any of these estimates and projections will be correct. Therefore, actual results may vary materially from these estimates and projections. Any square footage dimensions set forth are approximate.



INTERIOR

JAMES FAMULARO

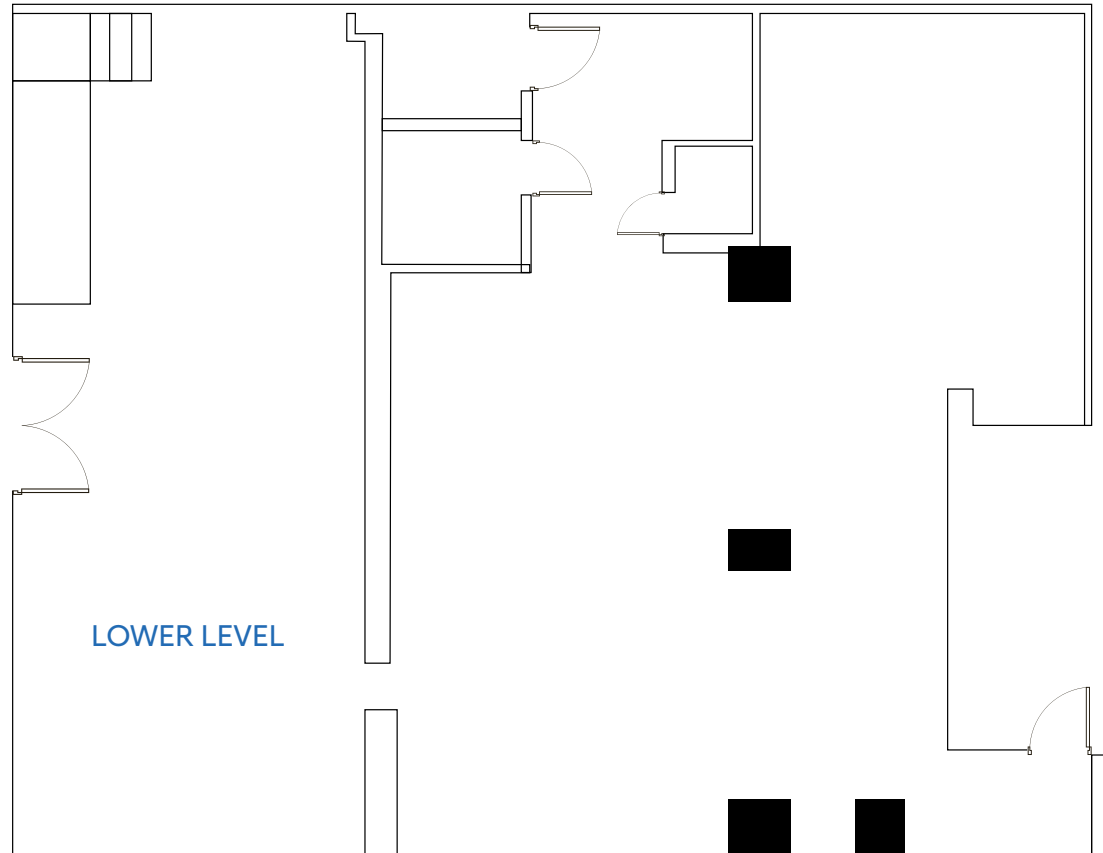
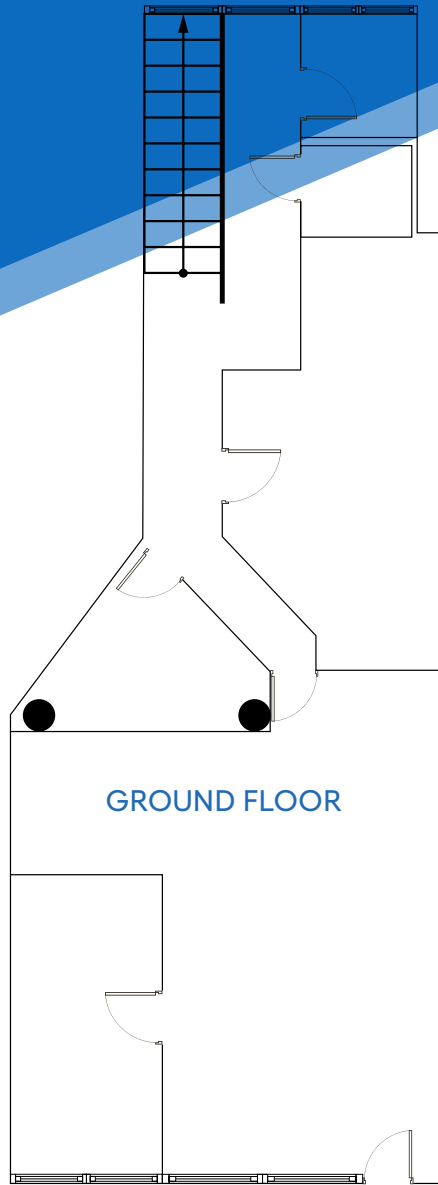
President
646.658.7373
jfamularo@meridiancapital.com

JACOB MAYER

Associate
212.468.5926
jmayer@meridiancapital.com



FLOOR PLAN



JAMES FAMULARO

President
646.658.7373
jfamularo@meridiancapital.com

JACOB MAYER

Associate
212.468.5926
jmayer@meridiancapital.com



NEIGHBORS



JAMES FAMULARO

President
646.658.7373
jfamularo@meridiancapital.com

JACOB MAYER

Associate
212.468.5926
jmayer@meridiancapital.com



All information supplied is from sources deemed reliable and is furnished subject to errors, omissions, modifications, removal of the listing from sale or lease, and to any listing conditions, including the rates and manner of payment of commissions for particular offerings imposed by Meridian Capital Group. This information may include estimates and projections prepared by Meridian Capital Group with respect to future events, and these future events may or may not actually occur. Such estimates and projections reflect various assumptions concerning anticipated results. While Meridian Capital Group believes these assumptions are reasonable, there can be no assurance that any of these estimates and projections will be correct. Therefore, actual results may vary materially from these estimates and projections. Any square footage dimensions set forth are approximate.