

# 499

## CANAL STREET SOHO, NYC

Between Renwick & Hudson Streets

RETAIL FOR LEASE

### APPROXIMATE SIZE

Ground Floor: 800 SF

### ASKING RENT

\$6,600/Month

### POSSESSION

Immediate

### TERM

Negotiable

### FRONTAGE

10 FT

### COMMENTS

- Newly renovated
- Private bathroom
- Wide glass frontage
- Steps from Freeman Plaza and easy access to public transportation

### NEIGHBORS

Lindens • DogPound • Houseman • Ear Inn • Trader Joe's • Solidcore • Arlo SoHo • Lazy Point • David Yurman • The Mill • Peachy • Maison Close

### TRANSPORTATION

1 2 A C E



PROPERTY INFORMATION

### JAMES FAMULARO

President  
646.658.7373  
jfamularo@meridiancapital.com

### BOBBY ORTENSE

Associate  
212.468.5953  
bortense@meridiancapital.com

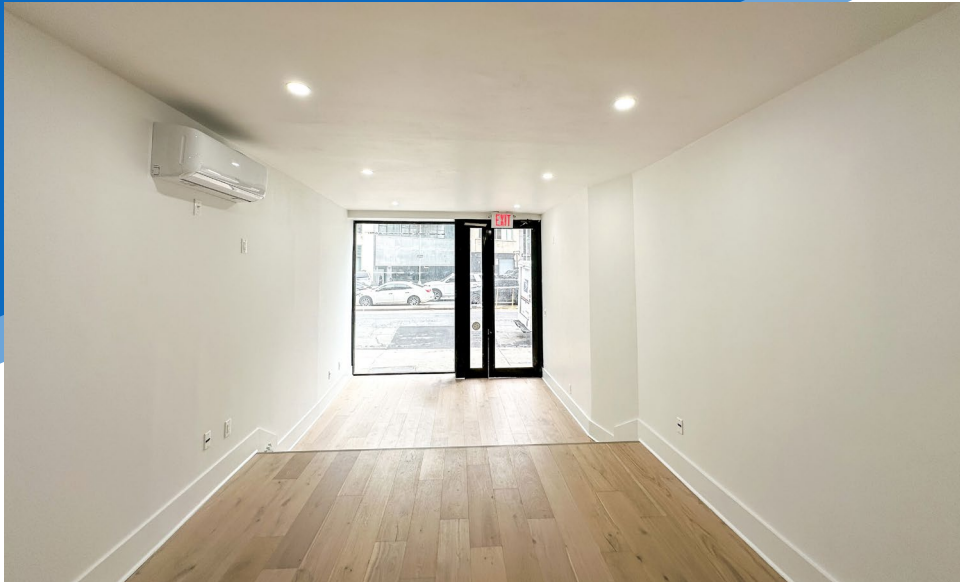


All information supplied is from sources deemed reliable and is furnished subject to errors, omissions, modifications, removal of the listing from sale or lease, and to any listing conditions, including the rates and manner of payment of commissions for particular offerings imposed by Meridian Capital Group. This information may include estimates and projections prepared by Meridian Capital Group with respect to future events, and these future events may or may not actually occur. Such estimates and projections reflect various assumptions concerning anticipated results. While Meridian Capital Group believes these assumptions are reasonable, there can be no assurance that any of these estimates and projections will be correct. Therefore, actual results may vary materially from these estimates and projections. Any square footage dimensions set forth are approximate.

# 499 CANAL STREET

SOHO, NYC | Between Renwick and Hudson Streets

RETAIL FOR LEASE



INTERIOR

## JAMES FAMULARO

President  
646.658.7373  
jfamularo@meridiancapital.com

## BOBBY ORTENSE

Associate  
212.468.5953  
bortense@meridiancapital.com



All information supplied is from sources deemed reliable and is furnished subject to errors, omissions, modifications, removal of the listing from sale or lease, and to any listing conditions, including the rates and manner of payment of commissions for particular offerings imposed by Meridian Capital Group. This information may include estimates and projections prepared by Meridian Capital Group with respect to future events, and these future events may or may not actually occur. Such estimates and projections reflect various assumptions concerning anticipated results. While Meridian Capital Group believes these assumptions are reasonable, there can be no assurance that any of these estimates and projections will be correct. Therefore, actual results may vary materially from these estimates and projections. Any square footage dimensions set forth are approximate.

# 499 CANAL STREET

SOHO, NYC | Between Renwick and Hudson Streets

RETAIL FOR LEASE



NEIGHBORS

**JAMES FAMULARO**

President  
646.658.7373  
jfamularo@meridiancapital.com

**BOBBY ORTENSE**

Associate  
212.468.5953  
bortense@meridiancapital.com



All information supplied is from sources deemed reliable and is furnished subject to errors, omissions, modifications, removal of the listing from sale or lease, and to any listing conditions, including the rates and manner of payment of commissions for particular offerings imposed by Meridian Capital Group. This information may include estimates and projections prepared by Meridian Capital Group with respect to future events, and these future events may or may not actually occur. Such estimates and projections reflect various assumptions concerning anticipated results. While Meridian Capital Group believes these assumptions are reasonable, there can be no assurance that any of these estimates and projections will be correct. Therefore, actual results may vary materially from these estimates and projections. Any square footage dimensions set forth are approximate.