

325

EAST 48TH STREET
TURTLE BAY, NYC

Between First & Second Avenues

RETAIL/RESTAURANT FOR LEASE



APPROXIMATE SIZE

Ground Floor: 700 SF

ASKING RENT

\$5,500/Month

POSSESSION

Immediate

TERM

Negotiable

FRONTAGE

8 FT

COMMENTS

- Clean white-box space
- F&B tenants welcome (cooking permitted)
- Steps away from United Nations
- Motivated landlord with flexible terms

NEIGHBORS

7th Street Burger • Remi Flower & Coffee • QQ Nails & Spa • tán • Barnea Bistro • Smith & Wollensky • Blank Slate • Ess-a-Bagel • UN Plaza • Copinette

TRANSPORTATION



PROPERTY INFORMATION

JAMES FAMULARO

President

GARRETT KELLY

Director

212.468.5939

gkelly@meridiancapital.com

KYLE FINK

Associate

212.468.5980

kfink@meridiancapital.com

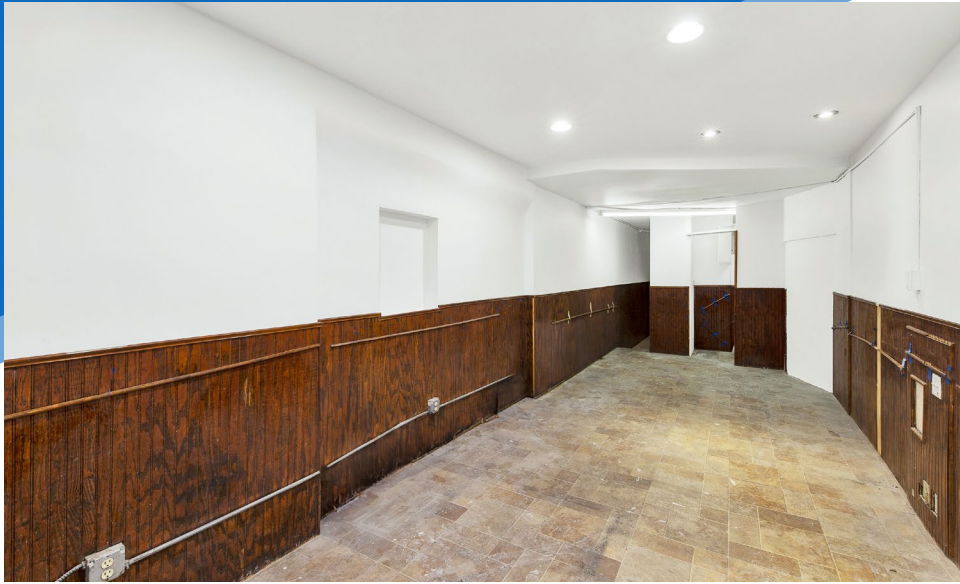


All information supplied is from sources deemed reliable and is furnished subject to errors, omissions, modifications, removal of the listing from sale or lease, and to any listing conditions, including the rates and manner of payment of commissions for particular offerings imposed by Meridian Capital Group. This information may include estimates and projections prepared by Meridian Capital Group with respect to future events, and these future events may or may not actually occur. Such estimates and projections reflect various assumptions concerning anticipated results. While Meridian Capital Group believes these assumptions are reasonable, there can be no assurance that any of these estimates and projections will be correct. Therefore, actual results may vary materially from these estimates and projections. Any square footage dimensions set forth are approximate.

325 EAST 48TH STREET

TURTLE BAY, NYC | Between First and Second Avenues

RETAIL/RESTAURANT FOR LEASE



INTERIOR

JAMES FAMULARO
President

GARRETT KELLY
Director
212.468.5939
gkelly@meridiancapital.com

KYLE FINK
Associate
212.468.5980
kfink@meridiancapital.com



All information supplied is from sources deemed reliable and is furnished subject to errors, omissions, modifications, removal of the listing from sale or lease, and to any listing conditions, including the rates and manner of payment of commissions for particular offerings imposed by Meridian Capital Group. This information may include estimates and projections prepared by Meridian Capital Group with respect to future events, and these future events may or may not actually occur. Such estimates and projections reflect various assumptions concerning anticipated results. While Meridian Capital Group believes these assumptions are reasonable, there can be no assurance that any of these estimates and projections will be correct. Therefore, actual results may vary materially from these estimates and projections. Any square footage dimensions set forth are approximate.

325 EAST 48TH STREET

TURTLE BAY, NYC | Between First and Second Avenues

RETAIL/RESTAURANT FOR LEASE

325 EAST 48TH STREET

NEIGHBORS

THIRD AVENUE

SECOND AVENUE

UN PLAZA

FIRST AVENUE

E 50TH STREET

E 49TH STREET

E 48TH STREET

E 47TH STREET

E 46TH STREET

McDonald's, **Ess-a-Bagel**, **CHINESE KITCHEN**, **VanLeeuwen**, **THE SMITH RESTAURANT & BAR**, **LA PECORA BIANCA**, **SUSHI HAYASHI**, **copinette**, **Kyan Grill & Juice Bar**

ples., **421**, **Sofia WINE BAR**, **BLANK SLATE**, **LA CAVA WINE BAR**, **SIPSACK TURKISH**, **CHATEAU 49**, **OPHELIA NY Grill & Deli**

Smith & Wollensky, **tán**, **Okatte Tanto NY**, **WOLLENSKY'S GRILL**, **MEDRITE URGENT CARE**, **BAROLO EAST**, **LENSCRAFTERS**, **Taki Sushi**, **REMI FLOWER & COFFEE**, **LA VERA PIZZERIA & RESTAURANT**, **7TH STREET BURGER**, **Club Usag**, **NISHIDA SHO-TEN**, **Poulette**, **JAMESONS BAR & KITCHEN**, **REMIX**, **ANGELINA WILLIAMS**, **THE FRESH MARKET**

XM PIE INC, **Starbucks**, **THE WORLD BANK IBRD - IDA**, **citi bike**, **DUNKIN'**, **mama pho**, **TRUMP**, **HOLY FAMILY CATHOLIC CHURCH**, **UN PLAZA**

FedEx, **Vanderbilt YMCA**, **BARNEA BISTRO**, **PERMANENT MISSIONS**, **citi bike**

THE PERFECT PINT PUBLIC HOUSE, **SPARKS STEAK HOUSE**, **Il Tinello**, **CHIRP SYMPHONY OF ANIMATED**, **Club Pilates**, **Kaoru**, **Pennylvane Coffee**

NY EXECUTIVE SERVICES NES

JAMES FAMULARO
President

GARRETT KELLY
Director
212.468.5939
gkelly@meridiancapital.com

KYLE FINK
Associate
212.468.5980
kfink@meridiancapital.com



All information supplied is from sources deemed reliable and is furnished subject to errors, omissions, modifications, removal of the listing from sale or lease, and to any listing conditions, including the rates and manner of payment of commissions for particular offerings imposed by Meridian Capital Group. This information may include estimates and projections prepared by Meridian Capital Group with respect to future events, and these future events may or may not actually occur. Such estimates and projections reflect various assumptions concerning anticipated results. While Meridian Capital Group believes these assumptions are reasonable, there can be no assurance that any of these estimates and projections will be correct. Therefore, actual results may vary materially from these estimates and projections. Any square footage dimensions set forth are approximate.