

1516

PARK AVENUE

EAST HARLEM, NYC

Corner of Park Avenue and East 111th Street

RETAIL FOR LEASE

APPROXIMATE SIZE

Ground Floor: 5,775 SF
Mezzanine: 1,925 SF
Lower Level: 3,016 SF

POSSESSION

Immediate

ASKING RENT

~~\$25,000/Month~~ Reduced
\$23,500/Month

CEILING HEIGHT

25 FT

TERM

5-10 Years

FRONTAGE

300 FT Wraparound

COMMENTS

- Black-iron vent in place
- Massive signage opportunity at 25 FT tall
- Designated delivery entrance with conveyor belt to lower level
- At the base of a 60-unit residential building
- **Only considering grocery store tenants**

NEIGHBORS

Success Academy • Irving Farm • C-Town Market • Contento • Casablanca Meat Market • Super Gyro

TRANSPORTATION

4 5 6



JAMES FAMULARO

President
646.658.7373
jfamularo@meridiancapital.com

JACOB MAYER

Associate
212.468.5926
jmayer@meridiancapital.com

COLE KLEPPINGER

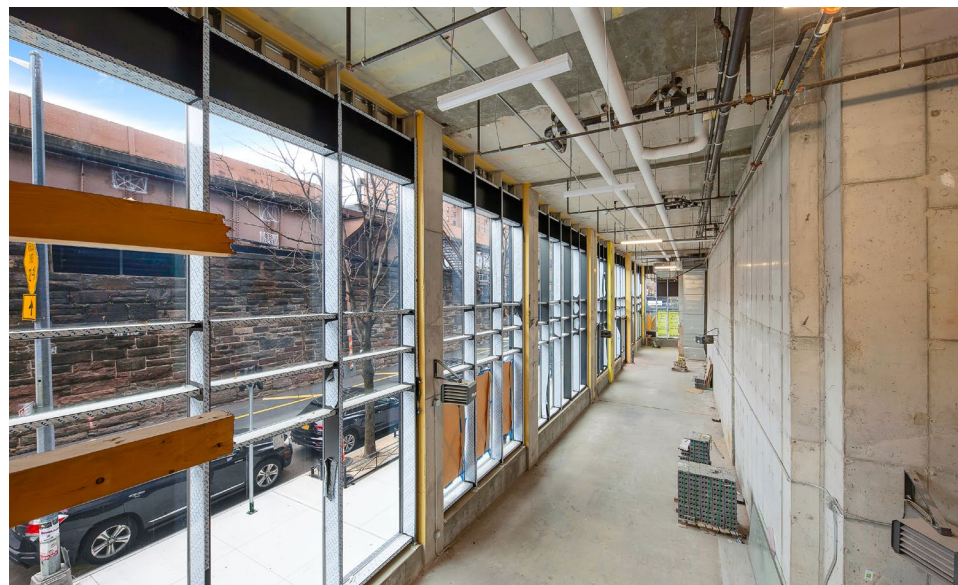
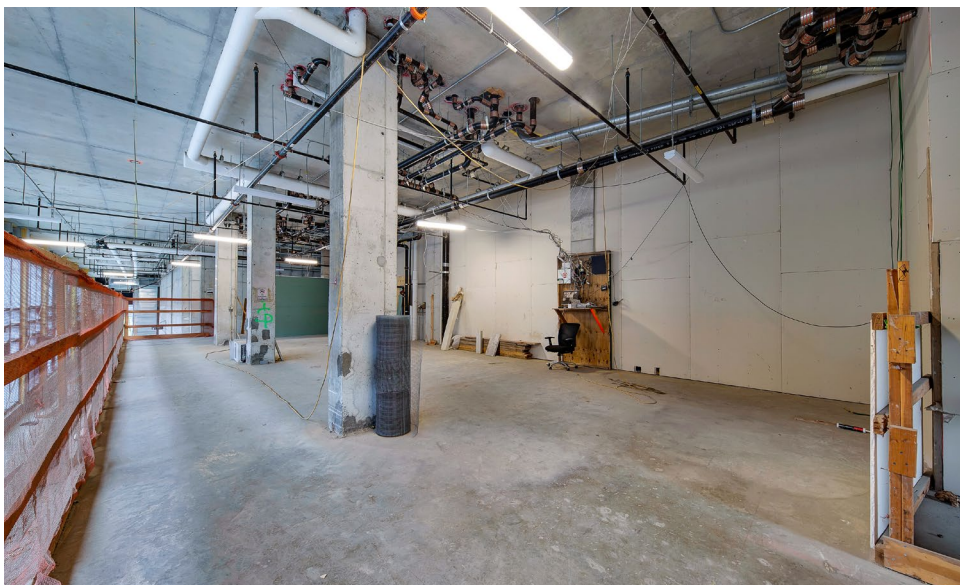
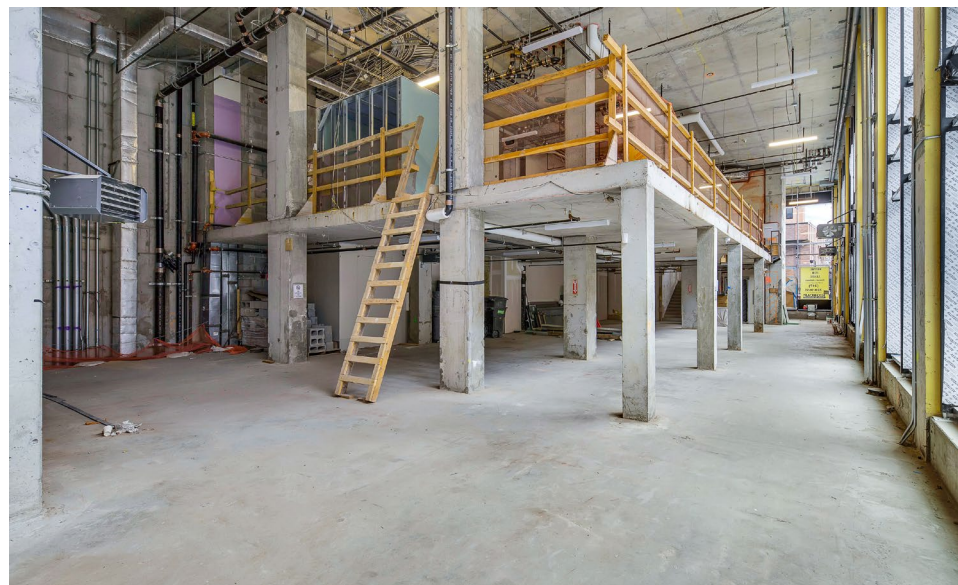
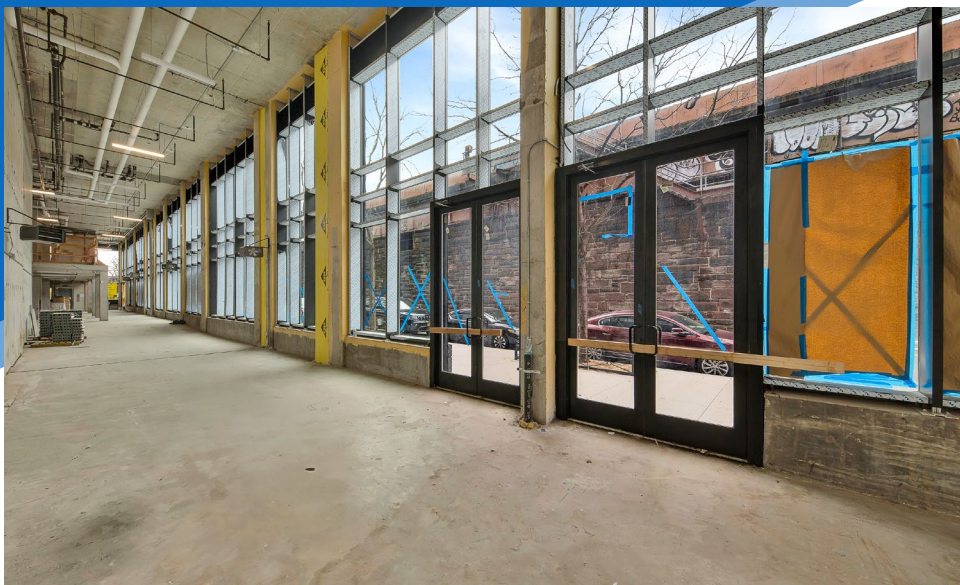
Associate
212.468.5993
ckleppinger@meridiancapital.com



All information supplied is from sources deemed reliable and is furnished subject to errors, omissions, modifications, removal of the listing from sale or lease, and to any listing conditions, including the rates and manner of payment of commissions for particular offerings imposed by Meridian Capital Group. This information may include estimates and projections prepared by Meridian Capital Group with respect to future events, and these future events may or may not actually occur. Such estimates and projections reflect various assumptions concerning anticipated results. While Meridian Capital Group believes these assumptions are reasonable, there can be no assurance that any of these estimates and projections will be correct. Therefore, actual results may vary materially from these estimates and projections. Any square footage dimensions set forth are approximate.

1516 PARK AVENUE
EAST HARLEM, NYC | Corner of Park Avenue and East 111th Street

RETAIL FOR LEASE



INTERIOR

JAMES FAMULARO

President
646.658.7373
jfamularo@meridiancapital.com

JACOB MAYER

Associate
212.468.5926
jmayer@meridiancapital.com

COLE KLEPPINGER

Associate
212.468.5993
ckleppinger@meridiancapital.com



All information supplied is from sources deemed reliable and is furnished subject to errors, omissions, modifications, removal of the listing from sale or lease, and to any listing conditions, including the rates and manner of payment of commissions for particular offerings imposed by Meridian Capital Group. This information may include estimates and projections prepared by Meridian Capital Group with respect to future events, and these future events may or may not actually occur. Such estimates and projections reflect various assumptions concerning anticipated results. While Meridian Capital Group believes these assumptions are reasonable, there can be no assurance that any of these estimates and projections will be correct. Therefore, actual results may vary materially from these estimates and projections. Any square footage dimensions set forth are approximate.

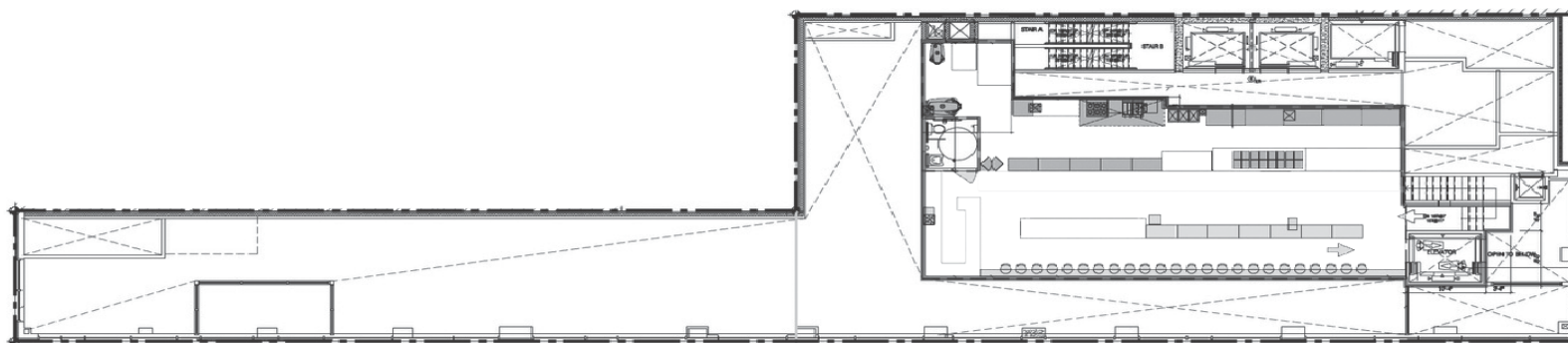
1516 PARK AVENUE

EAST HARLEM, NYC | Corner of Park Avenue and East 111th Street

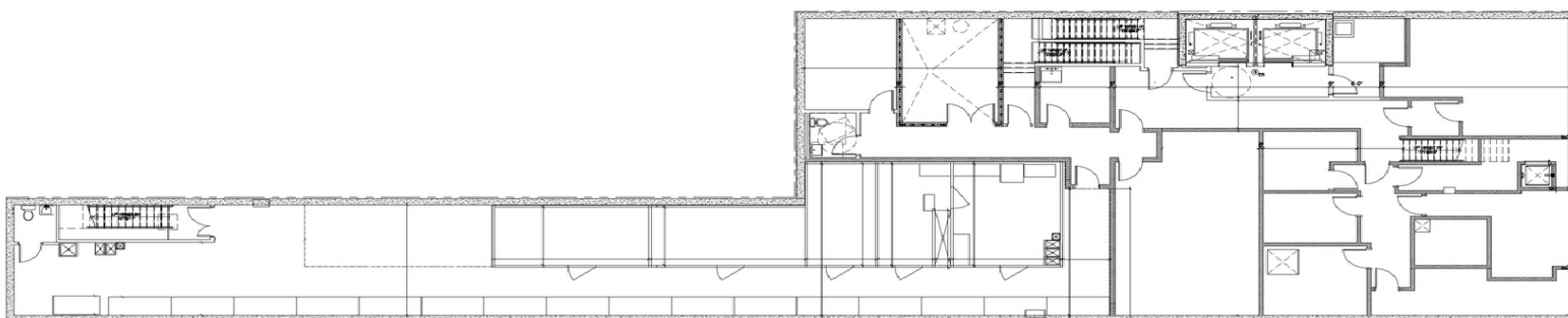
RETAIL FOR LEASE



GROUND FLOOR: 5,775 SF



MEZZANINE: 2,755 SF



LOWER LEVEL: 3,016 SF

FLOOR PLAN

JAMES FAMULARO

President
646.658.7373
jfamularo@meridiancapital.com

JACOB MAYER

Associate
212.468.5926
jmayer@meridiancapital.com

COLE KLEPPINGER

Associate
212.468.5993
ckleppinger@meridiancapital.com

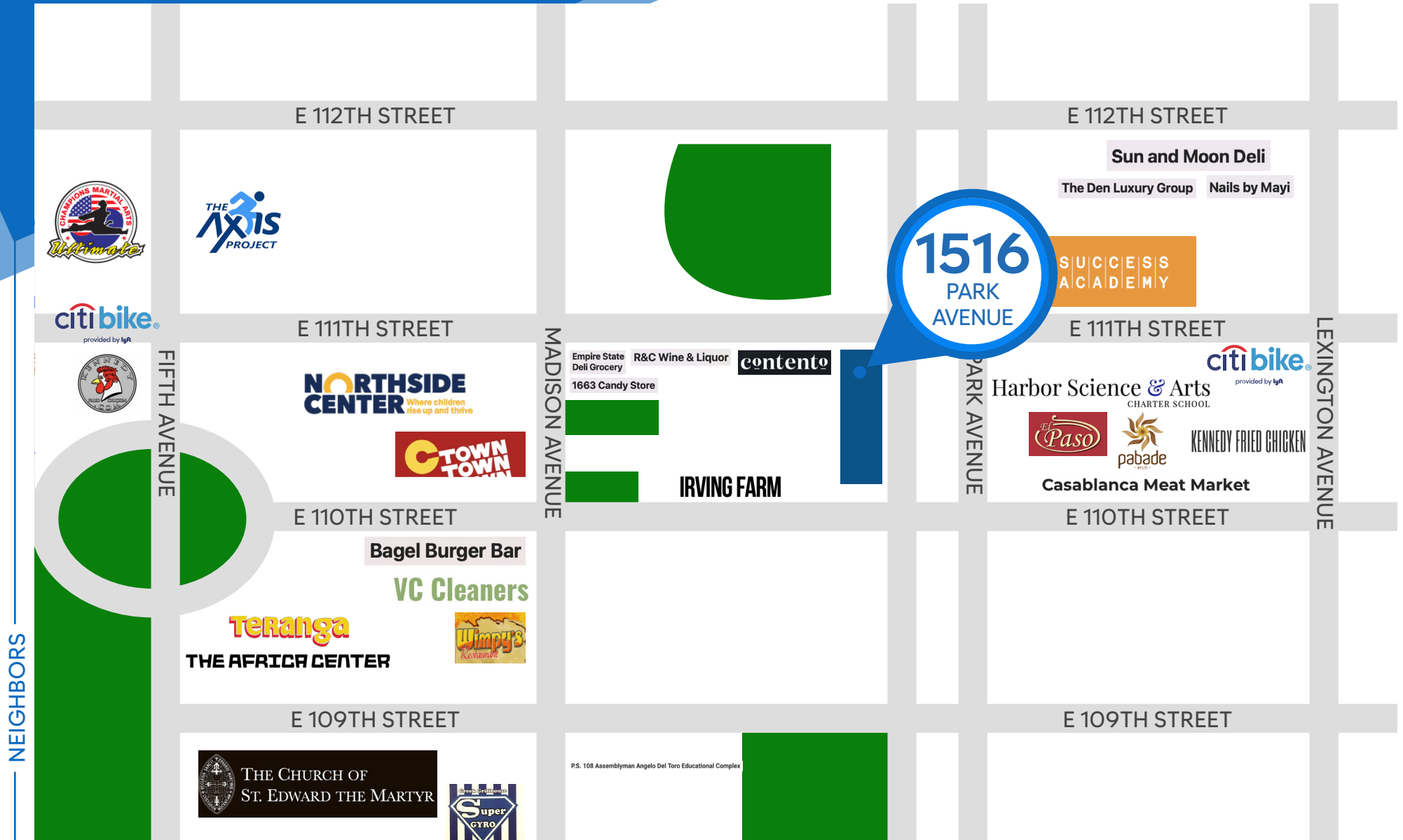


All information supplied is from sources deemed reliable and is furnished subject to errors, omissions, modifications, removal of the listing from sale or lease, and to any listing conditions, including the rates and manner of payment of commissions for particular offerings imposed by Meridian Capital Group. This information may include estimates and projections prepared by Meridian Capital Group with respect to future events, and these future events may or may not actually occur. Such estimates and projections reflect various assumptions concerning anticipated results. While Meridian Capital Group believes these assumptions are reasonable, there can be no assurance that any of these estimates and projections will be correct. Therefore, actual results may vary materially from these estimates and projections. Any square footage dimensions set forth are approximate.

1516 PARK AVENUE

EAST HARLEM, NYC | Corner of Park Avenue and East 111th Street

RETAIL FOR LEASE



JAMES FAMULARO

President
646.658.7373
jfamularo@meridiancapital.com

JACOB MAYER

Associate
212.468.5926
jmayer@meridiancapital.com

COLE KLEPPINGER

Associate
212.468.5993
ckleppinger@meridiancapital.com



All information supplied is from sources deemed reliable and is furnished subject to errors, omissions, modifications, removal of the listing from sale or lease, and to any listing conditions, including the rates and manner of payment of commissions for particular offerings imposed by Meridian Capital Group. This information may include estimates and projections prepared by Meridian Capital Group with respect to future events, and these future events may or may not actually occur. Such estimates and projections reflect various assumptions concerning anticipated results. While Meridian Capital Group believes these assumptions are reasonable, there can be no assurance that any of these estimates and projections will be correct. Therefore, actual results may vary materially from these estimates and projections. Any square footage dimensions set forth are approximate.