

# 134

## ORCHARD STREET LOWER EAST SIDE, NYC

Between Delancey & Rivington Streets

RETAIL FOR LEASE



### APPROXIMATE SIZE

1,800 SF

### ASKING RENT

\$18,995/Month

### POSSESSION

Immediate

### TERM

Negotiable

### FRONTAGE

25 FT

### COMMENTS

- Exposed brick wall interior
- No columns providing an open layout
- Prime location in the Lower East Side
- All uses considered

### NEIGHBORS

Wildair • Double Chicken Please • Contra • Shake Shack • Van Leeuwen • 7th Street Burger • Sonny Boy • Dirty French • Grey Lady • Rumpus Room

### TRANSPORTATION

**B D F M J Z**

PROPERTY INFORMATION

### JAMES FAMULARO

President

### BEN BIBERAJ

Senior Director

703.434.1461

bbiberaj@meridiancapital.com

### SAM TUCKER

Associate

212.468.5952

stucker@meridiancapital.com

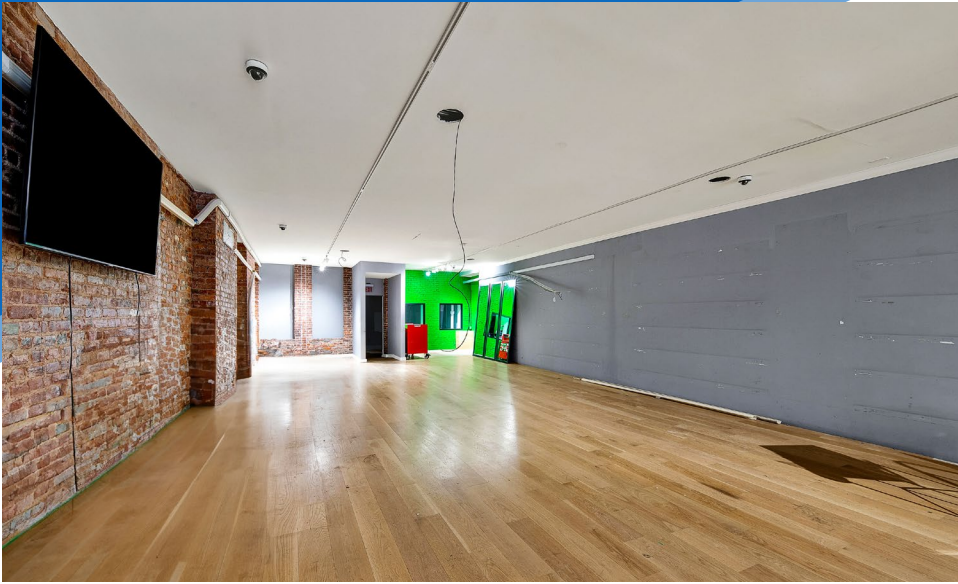


All information supplied is from sources deemed reliable and is furnished subject to errors, omissions, modifications, removal of the listing from sale or lease, and to any listing conditions, including the rates and manner of payment of commissions for particular offerings imposed by Meridian Capital Group. This information may include estimates and projections prepared by Meridian Capital Group with respect to future events, and these future events may or may not actually occur. Such estimates and projections reflect various assumptions concerning anticipated results. While Meridian Capital Group believes these assumptions are reasonable, there can be no assurance that any of these estimates and projections will be correct. Therefore, actual results may vary materially from these estimates and projections. Any square footage dimensions set forth are approximate.

# 134 ORCHARD STREET

LOWER EAST SIDE, NYC | Between Delancey and Rivington Streets

RETAIL FOR LEASE



INTERIOR

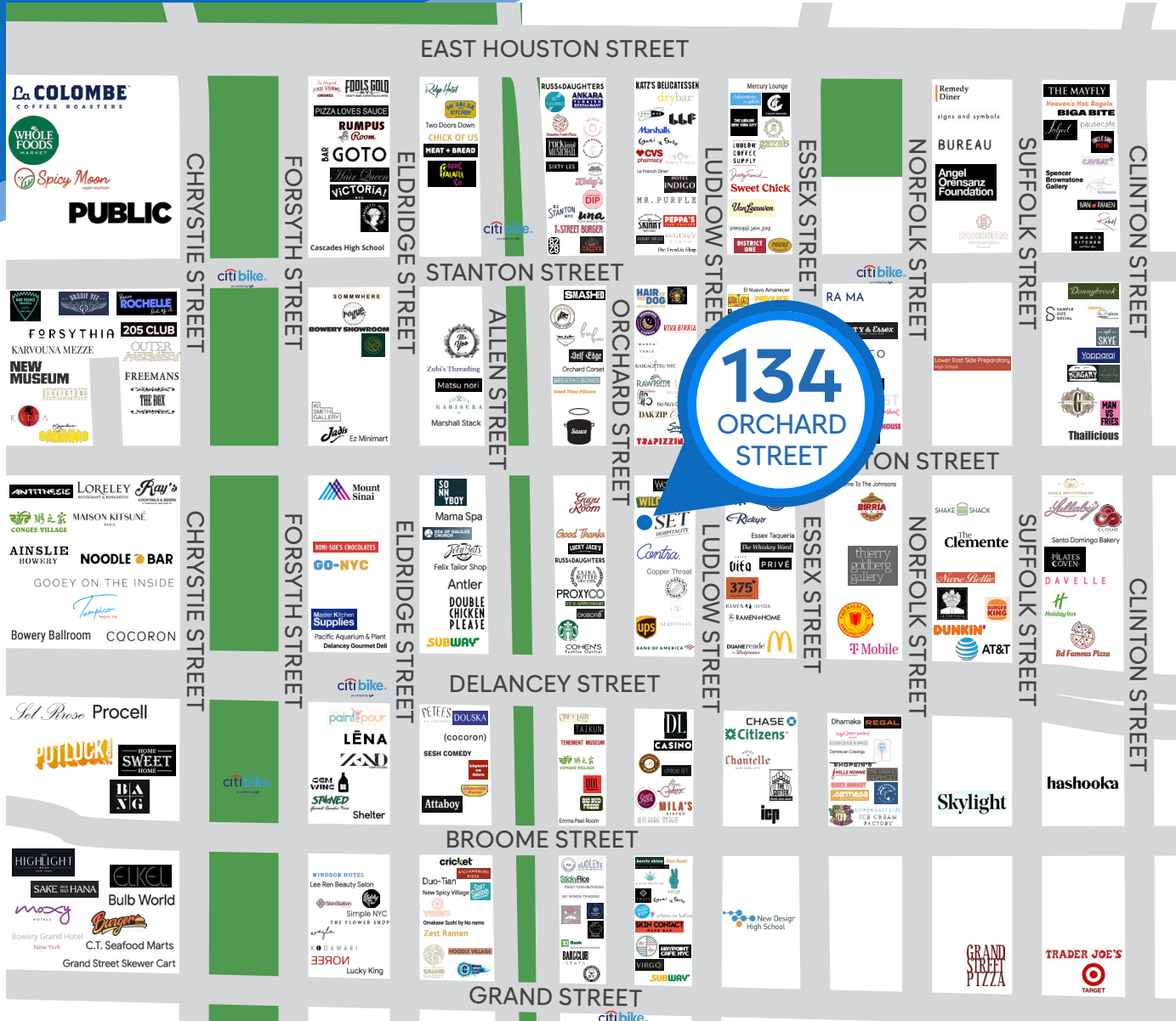
**JAMES FAMULARO**  
President

**BEN BIBERAJ**  
Senior Director  
703.434.1461  
bbiberaj@meridiancapital.com

**SAM TUCKER**  
Associate  
212.468.5952  
stucker@meridiancapital.com



All information supplied is from sources deemed reliable and is furnished subject to errors, omissions, modifications, removal of the listing from sale or lease, and to any listing conditions, including the rates and manner of payment of commissions for particular offerings imposed by Meridian Capital Group. This information may include estimates and projections prepared by Meridian Capital Group with respect to future events, and these future events may or may not actually occur. Such estimates and projections reflect various assumptions concerning anticipated results. While Meridian Capital Group believes these assumptions are reasonable, there can be no assurance that any of these estimates and projections will be correct. Therefore, actual results may vary materially from these estimates and projections. Any square footage dimensions set forth are approximate.



NEIGHBORS

**JAMES FAMULARO**  
 President

**BEN BIBERAJ**  
 Senior Director  
 703.434.1461  
 bbiberaj@meridiancapital.com

**SAM TUCKER**  
 Associate  
 212.468.5952  
 stucker@meridiancapital.com



All information supplied is from sources deemed reliable and is furnished subject to errors, omissions, modifications, removal of the listing from sale or lease, and to any listing conditions, including the rates and manner of payment of commissions for particular offerings imposed by Meridian Capital Group. This information may include estimates and projections prepared by Meridian Capital Group with respect to future events, and these future events may or may not actually occur. Such estimates and projections reflect various assumptions concerning anticipated results. While Meridian Capital Group believes these assumptions are reasonable, there can be no assurance that any of these estimates and projections will be correct. Therefore, actual results may vary materially from these estimates and projections. Any square footage dimensions set forth are approximate.