

1261

THIERIOT AVENUE

PARKCHESTER, BRONX

Between Westchester & Gleason
Avenues

RETAIL/OFFICE FOR LEASE



PROPERTY INFORMATION

APPROXIMATE SIZE

750 SF

ASKING RENT

Upon Request

POSSESSION

Immediate

TERM

10+ Years

FRONTAGE

10 FT

COMMENTS

- Ground floor turn-key office
- White-box condition
- New HVAC in place

NEIGHBORS

Dunkin' • Subway • Sabrosura Pizzeria • John's
Diner • Lenox Hill Radiology • Dragon Village •
Westcheste Flower Shop • Willie's Steak House

TRANSPORTATION

4 5 6

JAMES FAMULARO

President

BEN BIBERAJ

Senior Director

703.434.1461

bbiberaj@meridiancapital.com

NICK LIZANA

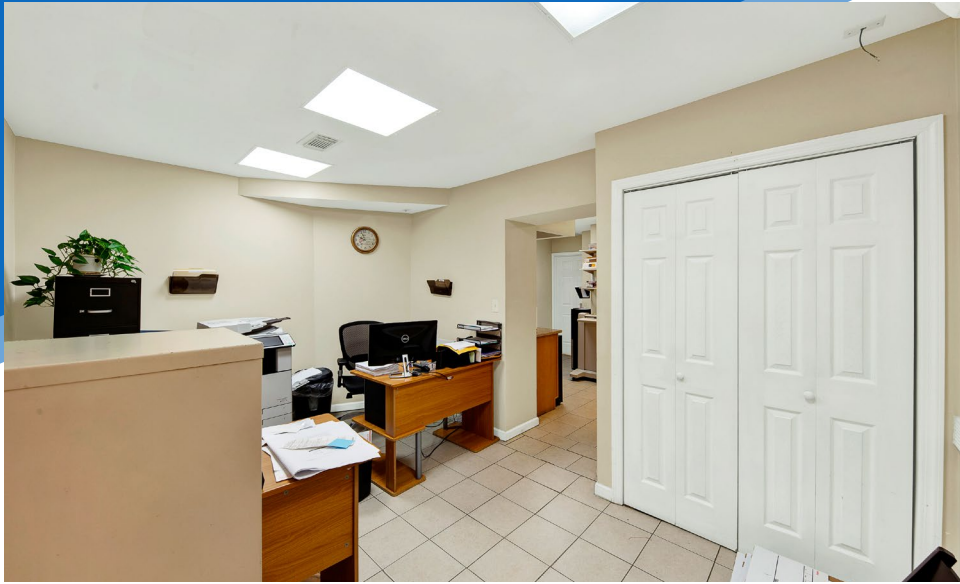
Associate

212.468.5986

nlizana@meridiancapital.com



All information supplied is from sources deemed reliable and is furnished subject to errors, omissions, modifications, removal of the listing from sale or lease, and to any listing conditions, including the rates and manner of payment of commissions for particular offerings imposed by Meridian Capital Group. This information may include estimates and projections prepared by Meridian Capital Group with respect to future events, and these future events may or may not actually occur. Such estimates and projections reflect various assumptions concerning anticipated results. While Meridian Capital Group believes these assumptions are reasonable, there can be no assurance that any of these estimates and projections will be correct. Therefore, actual results may vary materially from these estimates and projections. Any square footage dimensions set forth are approximate.



INTERIOR

JAMES FAMULARO
President

BEN BIBERAJ
Senior Director
703.434.1461
bbiberaj@meridiancapital.com

NICK LIZANA
Associate
212.468.5986
nlizana@meridiancapital.com





NEIGHBORS

JAMES FAMULARO
 President

BEN BIBERAJ
 Senior Director
 703.434.1461
 bbiberaj@meridiancapital.com

NICK LIZANA
 Associate
 212.468.5986
 nlizana@meridiancapital.com



All information supplied is from sources deemed reliable and is furnished subject to errors, omissions, modifications, removal of the listing from sale or lease, and to any listing conditions, including the rates and manner of payment of commissions for particular offerings imposed by Meridian Capital Group. This information may include estimates and projections prepared by Meridian Capital Group with respect to future events, and these future events may or may not actually occur. Such estimates and projections reflect various assumptions concerning anticipated results. While Meridian Capital Group believes these assumptions are reasonable, there can be no assurance that any of these estimates and projections will be correct. Therefore, actual results may vary materially from these estimates and projections. Any square footage dimensions set forth are approximate.