

923

SIMPSON STREET LONGWOOD, BRONX

Corner of Simpson and East 163rd Streets

RETAIL FOR LEASE



PROPERTY INFORMATION

APPROXIMATE SIZE

800 SF

ASKING RENT

\$80 PSF

POSSESSION

Immediate

TERM

Negotiable

FRONTAGE

120 FT Wraparound

COMMENTS

- Corner space situated in front of busy corner bus stop
- Perfect for dry use or office space
- Close proximity to the main Longwood Retail Corridor

NEIGHBORS

- Garage Clothing • Subway • Domino's Pizza • Foot Locker • Rite Aid • T-Mobile • Burger King • Rainbow • Georgina Restaurant • Jimbo's Hamburger Palace

TRANSPORTATION

2 5 6

Bx5 Bx6 Bx19

JAMES FAMULARO

President

DANE HARLOWE

Director

212.468.5966

dharlowe@meridiancapital.com

DANNY HEREDIA

Associate

212.468.5905

dheredia@meridiancapital.com

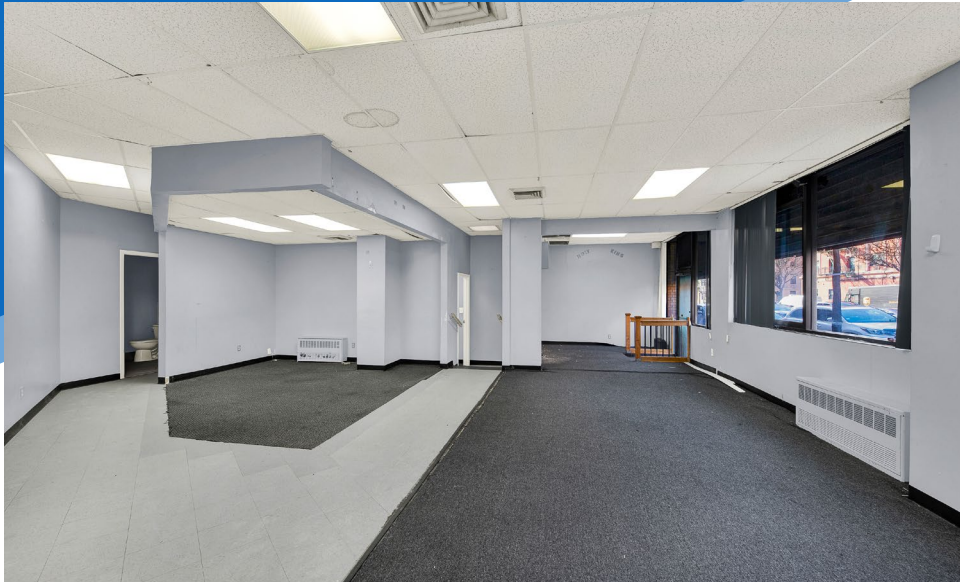


All information supplied is from sources deemed reliable and is furnished subject to errors, omissions, modifications, removal of the listing from sale or lease, and to any listing conditions, including the rates and manner of payment of commissions for particular offerings imposed by Meridian Capital Group. This information may include estimates and projections prepared by Meridian Capital Group with respect to future events, and these future events may or may not actually occur. Such estimates and projections reflect various assumptions concerning anticipated results. While Meridian Capital Group believes these assumptions are reasonable, there can be no assurance that any of these estimates and projections will be correct. Therefore, actual results may vary materially from these estimates and projections. Any square footage dimensions set forth are approximate.

923 SIMPSON STREET

LONGWOOD, BRONX | Corner of Simpson and East 163rd Streets

RETAIL FOR LEASE



INTERIOR

JAMES FAMULARO
President

DANE HARLOWE
Director
212.468.5966
dharlowe@meridiancapital.com

DANNY HEREDIA
Associate
212.468.5905
dheredia@meridiancapital.com

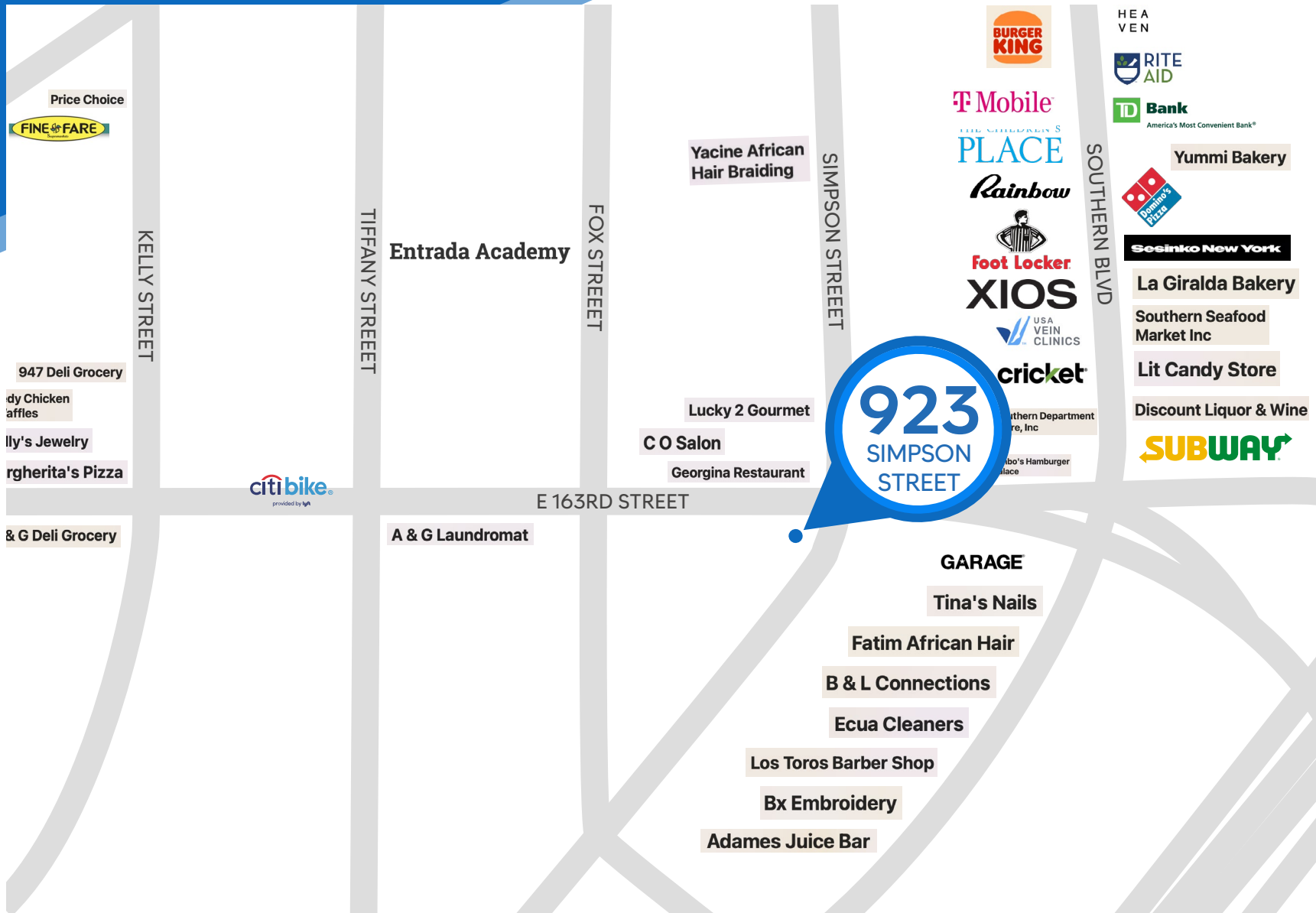


All information supplied is from sources deemed reliable and is furnished subject to errors, omissions, modifications, removal of the listing from sale or lease, and to any listing conditions, including the rates and manner of payment of commissions for particular offerings imposed by Meridian Capital Group. This information may include estimates and projections prepared by Meridian Capital Group with respect to future events, and these future events may or may not actually occur. Such estimates and projections reflect various assumptions concerning anticipated results. While Meridian Capital Group believes these assumptions are reasonable, there can be no assurance that any of these estimates and projections will be correct. Therefore, actual results may vary materially from these estimates and projections. Any square footage dimensions set forth are approximate.

923 SIMPSON STREET

LONGWOOD, BRONX | Corner of Simpson and East 163rd Streets

RETAIL FOR LEASE



NEIGHBORS

JAMES FAMULARO
President

DANE HARLOWE
Director
212.468.5966
dharlowe@meridiancapital.com

DANNY HEREDIA
Associate
212.468.5905
dheredia@meridiancapital.com



All information supplied is from sources deemed reliable and is furnished subject to errors, omissions, modifications, removal of the listing from sale or lease, and to any listing conditions, including the rates and manner of payment of commissions for particular offerings imposed by Meridian Capital Group. This information may include estimates and projections prepared by Meridian Capital Group with respect to future events, and these future events may or may not actually occur. Such estimates and projections reflect various assumptions concerning anticipated results. While Meridian Capital Group believes these assumptions are reasonable, there can be no assurance that any of these estimates and projections will be correct. Therefore, actual results may vary materially from these estimates and projections. Any square footage dimensions set forth are approximate.