

455

EAST 116TH STREET EAST HARLEM, NYC

Northwest Corner of East 116th Street &
Pleasant Avenue

RETAIL FOR LEASE

APPROXIMATE SIZE

Space A (Corner): 1,000 SF
Space B: 1,742 SF

ASKING RENT

Space A: \$10,000/Month
Space B: \$8,500/Month

POSSESSION

Immediate

TERM

5-10 Years

FRONTAGE

120 FT Wraparound

COMMENTS

- Space can be vented
- ADA compliant bathroom in place
- In white-box condition
- Tons of natural light and exposure on 116th Street
- Divisible options possible

NEIGHBORS

Dunkin' • Costco • Bob's Furniture • Burlington •
Ashley • Marshalls • Planet Fitness • Patsy's Pizzeria
• Subway • La Hacienda • Fierce Spa • Rao's

TRANSPORTATION

6



JAMES FAMULARO
President

DANE HARLOWE
Director
212.468.5966
dharlowe@meridiancapital.com

ALEC NAMDAR
Associate
212.468.5915
anamdar@meridiancapital.com

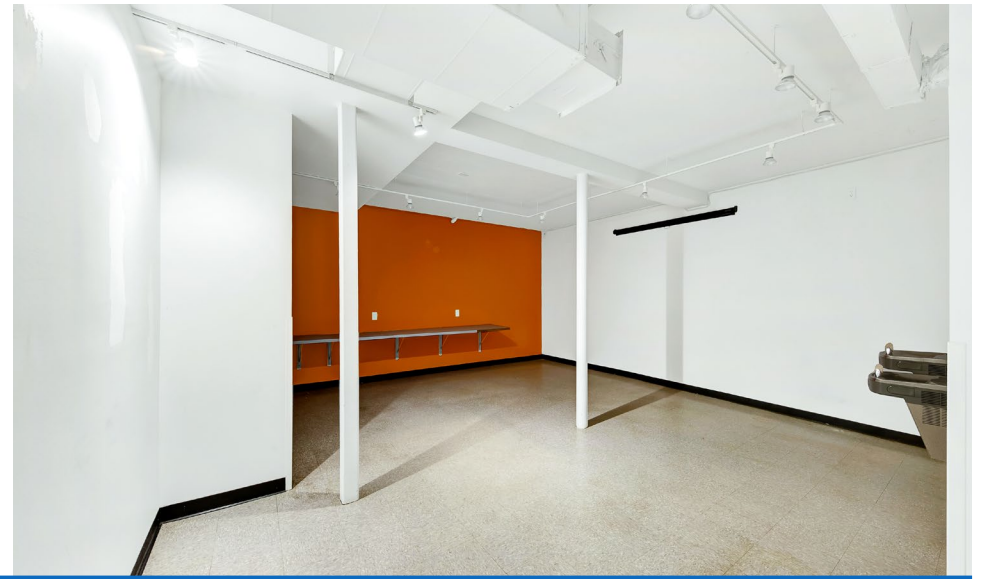
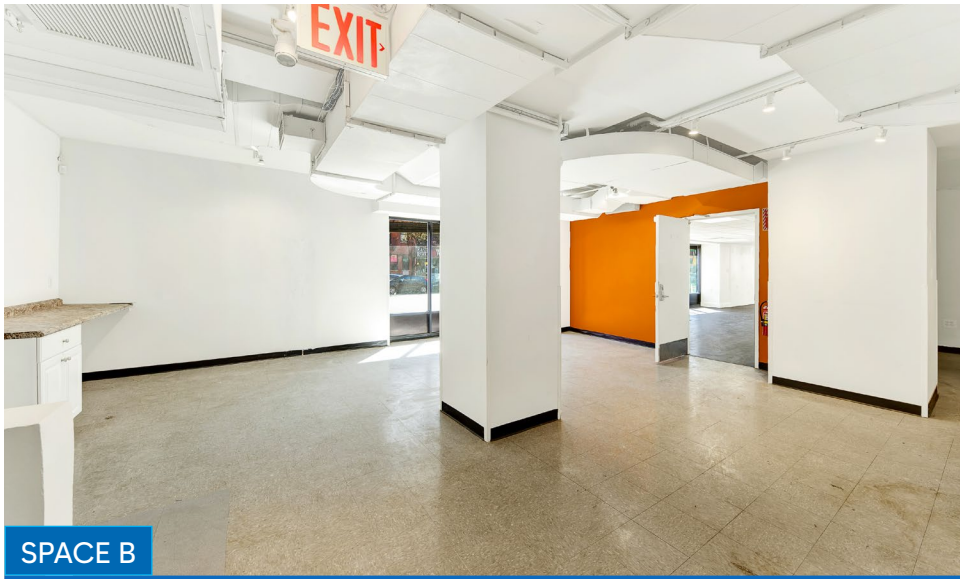
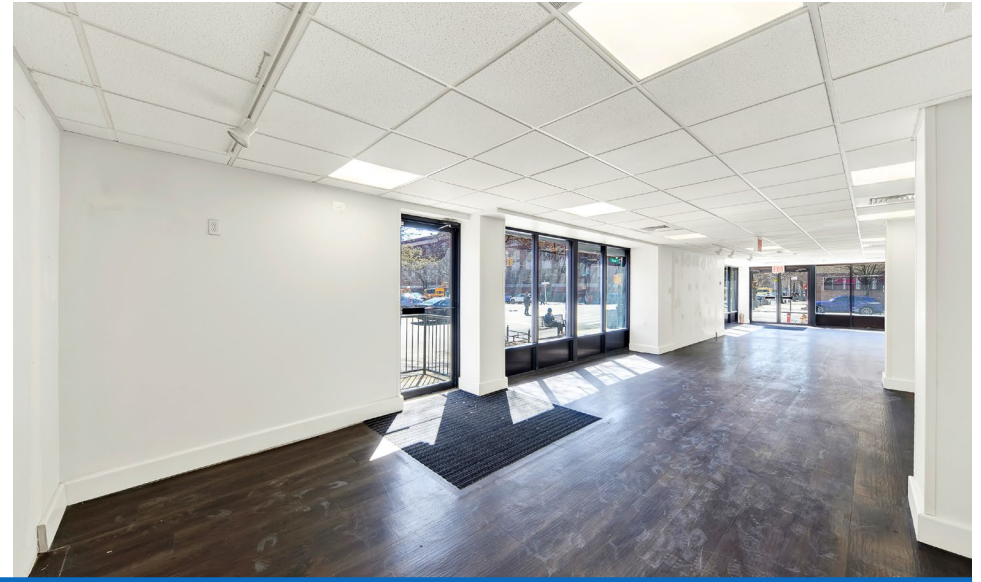


All information supplied is from sources deemed reliable and is furnished subject to errors, omissions, modifications, removal of the listing from sale or lease, and to any listing conditions, including the rates and manner of payment of commissions for particular offerings imposed by Meridian Capital Group. This information may include estimates and projections prepared by Meridian Capital Group with respect to future events, and these future events may or may not actually occur. Such estimates and projections reflect various assumptions concerning anticipated results. While Meridian Capital Group believes these assumptions are reasonable, there can be no assurance that any of these estimates and projections will be correct. Therefore, actual results may vary materially from these estimates and projections. Any square footage dimensions set forth are approximate.

455 EAST 116TH STREET

EAST HARLEM, NYC | Northwest Corner of East 116th Street and Pleasant Avenue

RETAIL FOR LEASE



INTERIOR

JAMES FAMULARO
President

DANE HARLOWE
Director
212.468.5966
dharlowe@meridiancapital.com

ALEC NAMDAR
Associate
212.468.5915
anamdar@meridiancapital.com



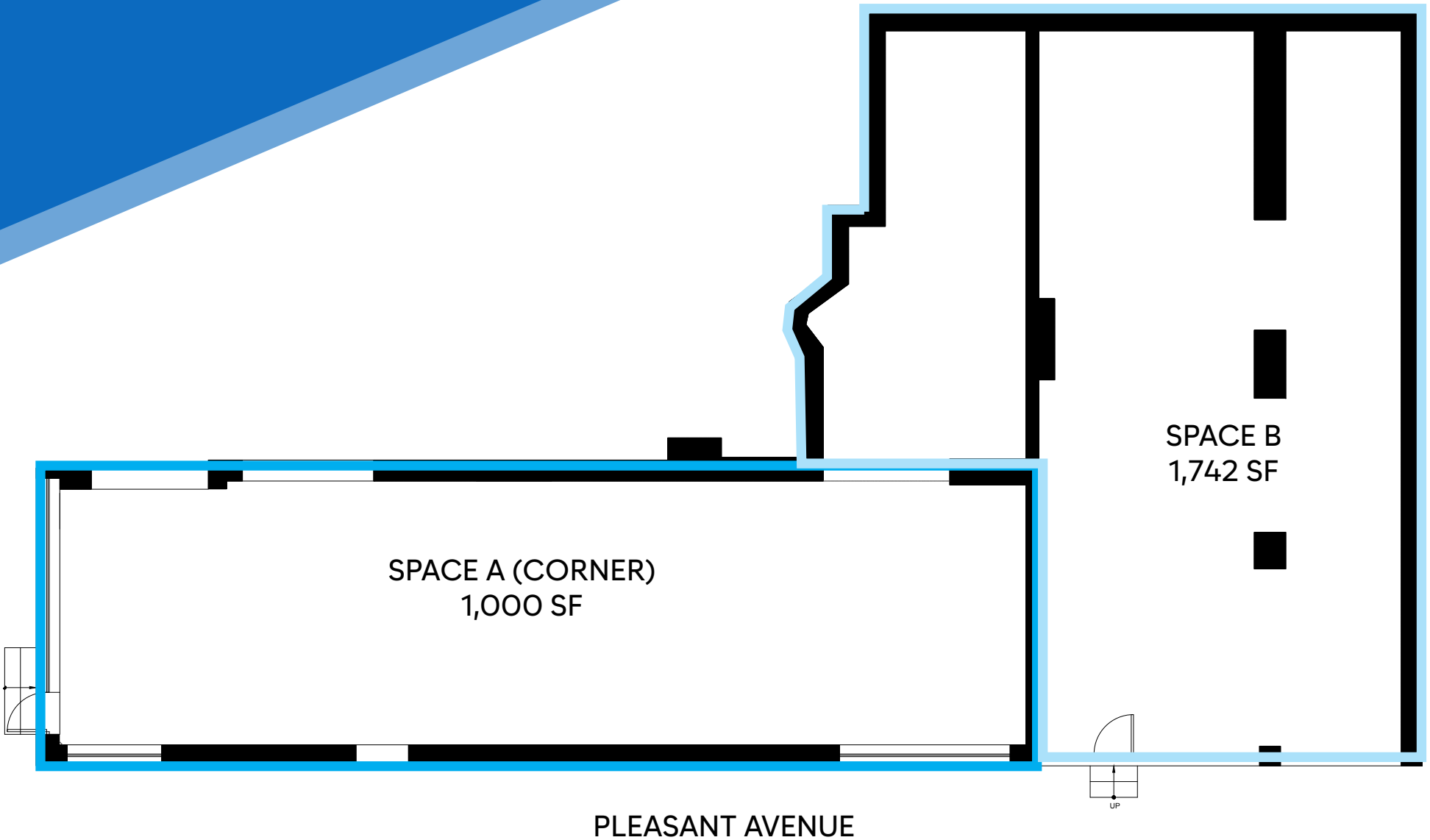
All information supplied is from sources deemed reliable and is furnished subject to errors, omissions, modifications, removal of the listing from sale or lease, and to any listing conditions, including the rates and manner of payment of commissions for particular offerings imposed by Meridian Capital Group. This information may include estimates and projections prepared by Meridian Capital Group with respect to future events, and these future events may or may not actually occur. Such estimates and projections reflect various assumptions concerning anticipated results. While Meridian Capital Group believes these assumptions are reasonable, there can be no assurance that any of these estimates and projections will be correct. Therefore, actual results may vary materially from these estimates and projections. Any square footage dimensions set forth are approximate.

455 EAST 116TH STREET

EAST HARLEM, NYC | Northwest Corner of East 116th Street and Pleasant Avenue

RETAIL FOR LEASE

FLOOR PLAN



JAMES FAMULARO
President

DANE HARLOWE
Director
212.468.5966
dharlowe@meridiancapital.com

ALEC NAMDAR
Associate
212.468.5915
anamdar@meridiancapital.com



All information supplied is from sources deemed reliable and is furnished subject to errors, omissions, modifications, removal of the listing from sale or lease, and to any listing conditions, including the rates and manner of payment of commissions for particular offerings imposed by Meridian Capital Group. This information may include estimates and projections prepared by Meridian Capital Group with respect to future events, and these future events may or may not actually occur. Such estimates and projections reflect various assumptions concerning anticipated results. While Meridian Capital Group believes these assumptions are reasonable, there can be no assurance that any of these estimates and projections will be correct. Therefore, actual results may vary materially from these estimates and projections. Any square footage dimensions set forth are approximate.

455 EAST 116TH STREET

EAST HARLEM, NYC | Northwest Corner of East 116th Street and Pleasant Avenue

RETAIL FOR LEASE

455 EAST 116TH STREET

NEIGHBORS

THIRD AVENUE

SECOND AVENUE

PLEASANT AVENUE

FDR Drive

OUR LADY QUEEN OF ANGELS SCHOOL

MANHATTAN CENTER FOR SCIENCE AND MATHEMATICS

J Style's Barber Shop

D'colores Beauty Salon

AT&T

Spaha Soul

Just nutrition

Jam's Grocery Variety Store

Botanica Flor de Gracia

Johnnys Deli Grocery

RENAISSANCE SCHOOL OF THE ARTS

Pretty girl salon corp

Guajillo Restaurant

Jalloh Phone Cards & Clothing

Saint Marks Orthodox Church

Diamante Flowers and Balloons

Fernando's Barber Shop

Pleasantville Hardware

Blockchain Pharmacy

2141 GROCERY STORE

U-HAUL

Express Brows

NYC Laundromat

Fanny's Hair Braiding

Redeemer

Colina Bar

Organic Express Deli

NYC CAR DEALERS

Family Deli & Grill

Azalea

SAPDARA

BASKIN ROBBINS

DUNKIN'

Harlem Thrift Shop

Hassay Juice Bar

Uptown Care Pharmacy

Nam Deli Food & Juice

24-7 Authentic Apparel

El Mango Loko

EAGLE TILE

Fantasy Vip Barber Shop

Shop Unisex Inc.

Caribe Social Athletic Club Los Gallos

Los Amigos Restaurant

Touba Africa Store

Room For Dessert

Viny & Lidy Food Court

Makana

Sanola Deli

Xing Dragon

Cherry Valley Marketplace

Hair paradigm studio

All Star Fast Food

Taqueria Santa Fe

Our Lady of Mount Carmel

The Love Cafe

Manhattan Floral and Design

Good Luck Laundry

East Side Deli

Dragon City

Great Wall

Betty Tattoos

Holy Tabernacle Church

RAO'S

paint n puff

Hair Omatics Unisex

S & N Discounts

Fanny's Hair Braiding

Third Avenue Liquor Corporation

La Costeñita Grocery

Teddy's F&B

Indo Pak Halal Restaurant

Lash Out Lashes

Luxe on 2nd

In & Out Deli Grocery Inc

Juice Max

Jdr Barbershop

READY'S AFRICAN HAIR BRAIDING

Astoria Cakes

justcuts

Dead Zone Tattoo

The Beauty Cave

Zafire Dance Studio

Diffut Auto Repair

OUR LADY QUEEN OF ANGELS SCHOOL

P.S. 102 JACQUES CARTIER EXPLORERS

MANHATTAN CENTER FOR SCIENCE AND MATHEMATICS

RAO'S

FDR Drive

JAMES FAMULARO
President

DANE HARLOWE
Director
212.468.5966
dharlowe@meridiancapital.com

ALEC NAMDAR
Associate
212.468.5915
anamdar@meridiancapital.com



All information supplied is from sources deemed reliable and is furnished subject to errors, omissions, modifications, removal of the listing from sale or lease, and to any listing conditions, including the rates and manner of payment of commissions for particular offerings imposed by Meridian Capital Group. This information may include estimates and projections prepared by Meridian Capital Group with respect to future events, and these future events may or may not actually occur. Such estimates and projections reflect various assumptions concerning anticipated results. While Meridian Capital Group believes these assumptions are reasonable, there can be no assurance that any of these estimates and projections will be correct. Therefore, actual results may vary materially from these estimates and projections. Any square footage dimensions set forth are approximate.