

22

EAST 125TH STREET HARLEM, NYC

Between Fifth & Madison Avenues

RETAIL FOR LEASE

APPROXIMATE SIZE

900 SF + Backyard and Basement

ASKING RENT

Upon Request

POSSESSION

Immediate

TERM

5-10 Years

FRONTAGE

16 FT

COMMENTS

- Can be vented
- White-box condition
- ADA compliant bathroom
- Interior access to basement
- Steps from the National Black Theater Development and Nike

NEIGHBORS

TJ Maxx • Insomnia Cookies • Wing Stop •
Chipotle • Sylvia's • Edible Arrangements • Just
Salad • Cohen's Fashion Optical • Whole Foods

TRANSPORTATION

6 2 3



PROPERTY INFORMATION

JAMES FAMULARO
President

DANE HARLOWE
Director
212.468.5966
dharlowe@meridiancapital.com

ALEC NAMDAR
Associate
212.468.5915
anamdard@meridiancapital.com

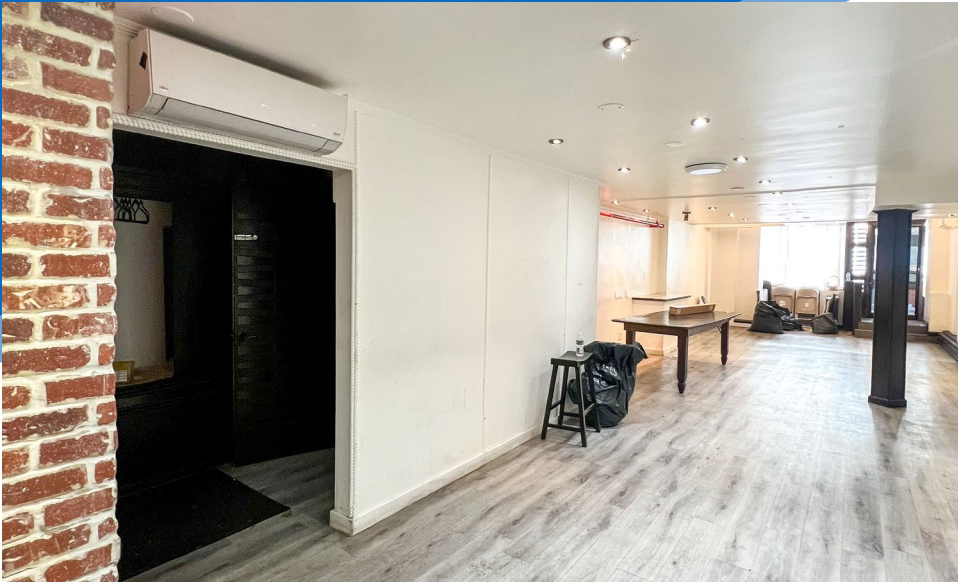


All information supplied is from sources deemed reliable and is furnished subject to errors, omissions, modifications, removal of the listing from sale or lease, and to any listing conditions, including the rates and manner of payment of commissions for particular offerings imposed by Meridian Capital Group. This information may include estimates and projections prepared by Meridian Capital Group with respect to future events, and these future events may or may not actually occur. Such estimates and projections reflect various assumptions concerning anticipated results. While Meridian Capital Group believes these assumptions are reasonable, there can be no assurance that any of these estimates and projections will be correct. Therefore, actual results may vary materially from these estimates and projections. Any square footage dimensions set forth are approximate.

22 EAST 125TH STREET

EAST HARLEM, NYC | Between Fifth and Madison Avenues

RETAIL FOR LEASE



INTERIOR

JAMES FAMULARO
President

DANE HARLOWE
Director
212.468.5966
dharlowe@meridiancapital.com

ALEC NAMDAR
Associate
212.468.5915
anamdar@meridiancapital.com

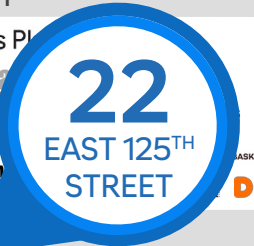
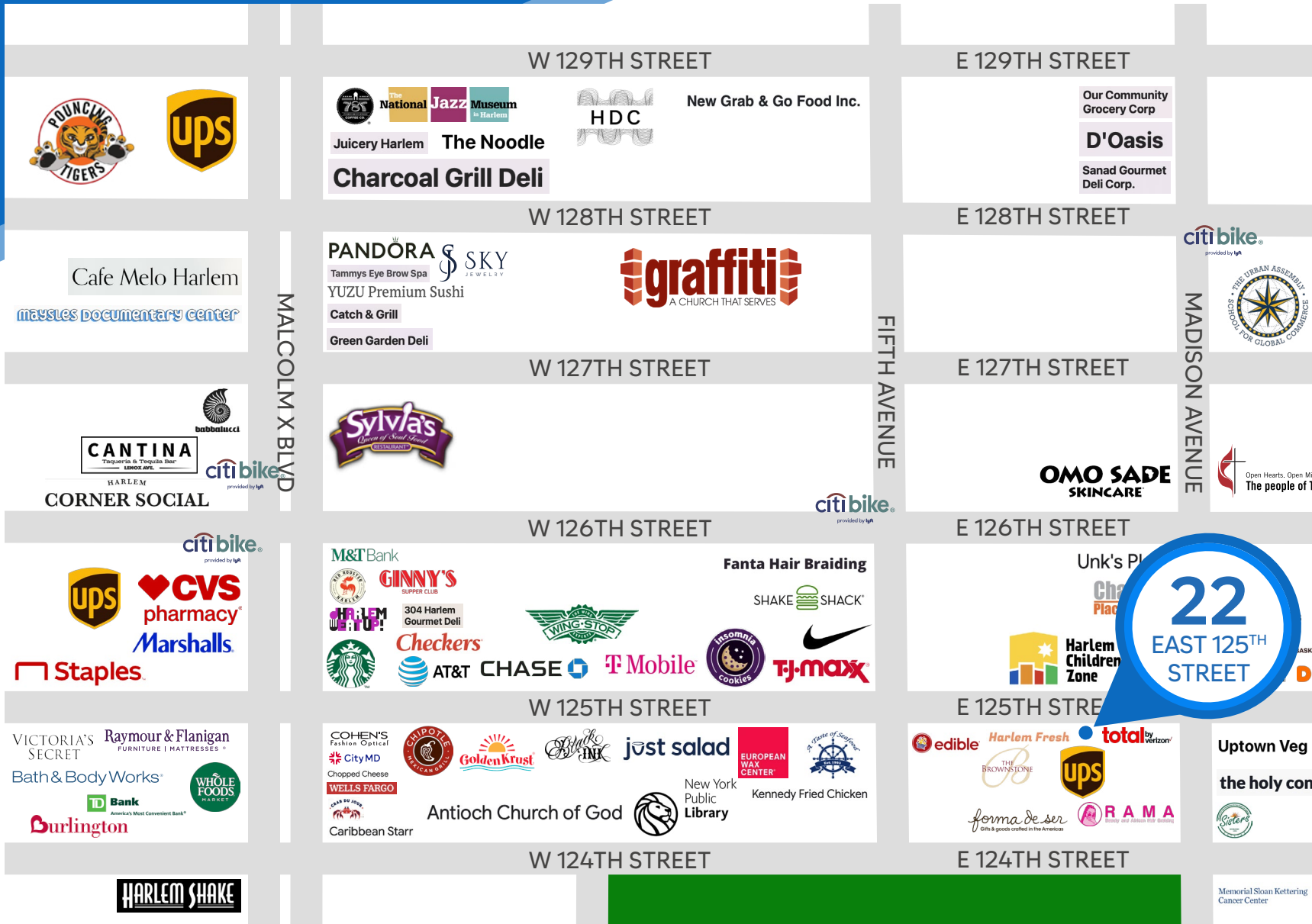


All information supplied is from sources deemed reliable and is furnished subject to errors, omissions, modifications, removal of the listing from sale or lease, and to any listing conditions, including the rates and manner of payment of commissions for particular offerings imposed by Meridian Capital Group. This information may include estimates and projections prepared by Meridian Capital Group with respect to future events, and these future events may or may not actually occur. Such estimates and projections reflect various assumptions concerning anticipated results. While Meridian Capital Group believes these assumptions are reasonable, there can be no assurance that any of these estimates and projections will be correct. Therefore, actual results may vary materially from these estimates and projections. Any square footage dimensions set forth are approximate.

22 EAST 125TH STREET

EAST HARLEM, NYC | Between Fifth and Madison Avenues

RETAIL FOR LEASE



JAMES FAMULARO
President

DANE HARLOWE
Director
212.468.5966
dharlowe@meridiancapital.com

ALEC NAMDAR
Associate
212.468.5915
anamdar@meridiancapital.com



All information supplied is from sources deemed reliable and is furnished subject to errors, omissions, modifications, removal of the listing from sale or lease, and to any listing conditions, including the rates and manner of payment of commissions for particular offerings imposed by Meridian Capital Group. This information may include estimates and projections prepared by Meridian Capital Group with respect to future events, and these future events may or may not actually occur. Such estimates and projections reflect various assumptions concerning anticipated results. While Meridian Capital Group believes these assumptions are reasonable, there can be no assurance that any of these estimates and projections will be correct. Therefore, actual results may vary materially from these estimates and projections. Any square footage dimensions set forth are approximate.