

202

WEST 14TH STREET WEST VILLAGE, NYC

Between Seventh & Eighth Avenues

RESTAURANT FOR LEASE

APPROXIMATE SIZE

Ground Floor: 2,000 SF
Basement: 700 SF

ASKING RENT

\$18,500/Month

POSSESSION

Immediate

TERM

10 Years

FRONTAGE

20 FT

COMMENTS

- Turn-key restaurant with existing infrastructure in place
- Full kitchen appliances in place with gas and hood
- Multiple walk-in boxes and 2 bathrooms in place
- Previous 2AM liquor license

NEIGHBORS

Sappe • SLT • The Donut Pub • Museum of Illusions • Dry Bar • Insomnia Cookies • American Bar • Roey's • Don Angie • Arthur & Sons • Theory • Sweetgreen • Wogies • Rosemary's • Glosslab • Coppelia

TRANSPORTATION

A C E L 1 2 3



M5 M7 M20 M14A M14D

JAMES FAMULARO
President

NOAM AZIZ
Associate
212.468.5984
naziz@meridiancapital.com

SAMUEL MUKAMAL
Associate
212.468.5975
smukamal@meridiancapital.com



PROPERTY INFORMATION

All information supplied is from sources deemed reliable and is furnished subject to errors, omissions, modifications, removal of the listing from sale or lease, and to any listing conditions, including the rates and manner of payment of commissions for particular offerings imposed by Meridian Capital Group. This information may include estimates and projections prepared by Meridian Capital Group with respect to future events, and these future events may or may not actually occur. Such estimates and projections reflect various assumptions concerning anticipated results. While Meridian Capital Group believes these assumptions are reasonable, there can be no assurance that any of these estimates and projections will be correct. Therefore, actual results may vary materially from these estimates and projections. Any square footage dimensions set forth are approximate.

 **MERIDIAN**
RETAIL LEASING

202 WEST 14TH STREET

WEST VILLAGE, NYC | Between Seventh and Eighth Avenues

RESTAURANT FOR LEASE



INTERIOR

JAMES FAMULARO
President

NOAM AZIZ
Associate
212.468.5984
naziz@meridiancapital.com

SAMUEL MUKAMAL
Associate
212.468.5975
smukamal@meridiancapital.com

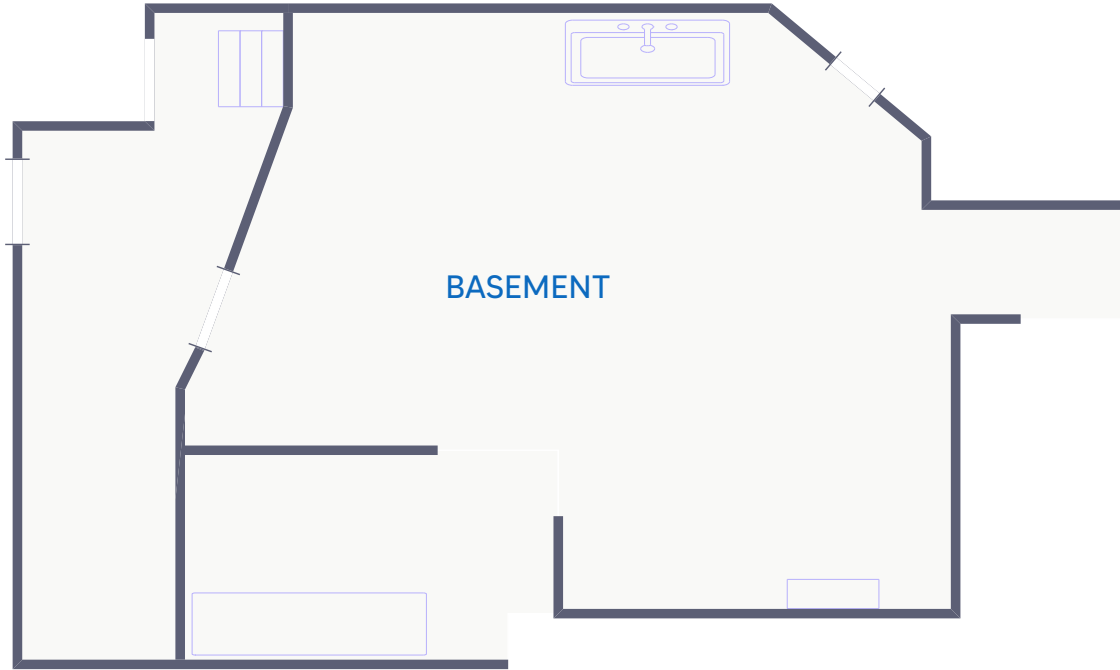
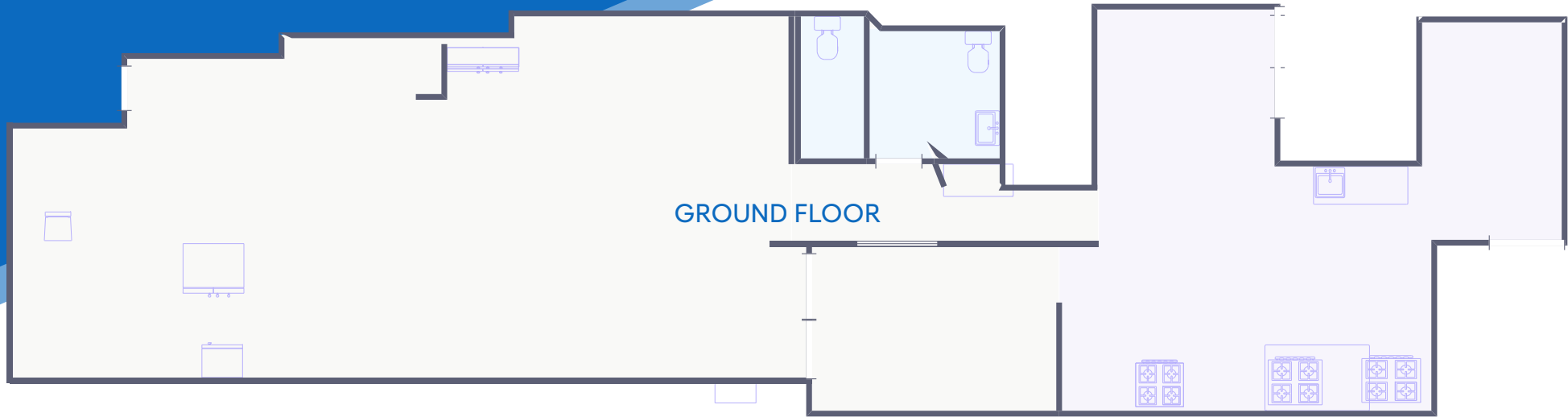


All information supplied is from sources deemed reliable and is furnished subject to errors, omissions, modifications, removal of the listing from sale or lease, and to any listing conditions, including the rates and manner of payment of commissions for particular offerings imposed by Meridian Capital Group. This information may include estimates and projections prepared by Meridian Capital Group with respect to future events, and these future events may or may not actually occur. Such estimates and projections reflect various assumptions concerning anticipated results. While Meridian Capital Group believes these assumptions are reasonable, there can be no assurance that any of these estimates and projections will be correct. Therefore, actual results may vary materially from these estimates and projections. Any square footage dimensions set forth are approximate.

202 WEST 14TH STREET

WEST VILLAGE, NYC | Between Seventh and Eighth Avenues

RESTAURANT FOR LEASE



FLOOR PLANS

JAMES FAMULARO
President

NOAM AZIZ
Associate
212.468.5984
naziz@meridiancapital.com

SAMUEL MUKAMAL
Associate
212.468.5975
smukamal@meridiancapital.com



All information supplied is from sources deemed reliable and is furnished subject to errors, omissions, modifications, removal of the listing from sale or lease, and to any listing conditions, including the rates and manner of payment of commissions for particular offerings imposed by Meridian Capital Group. This information may include estimates and projections prepared by Meridian Capital Group with respect to future events, and these future events may or may not actually occur. Such estimates and projections reflect various assumptions concerning anticipated results. While Meridian Capital Group believes these assumptions are reasonable, there can be no assurance that any of these estimates and projections will be correct. Therefore, actual results may vary materially from these estimates and projections. Any square footage dimensions set forth are approximate.

202 WEST 14TH STREET
 WEST VILLAGE, NYC | Between Seventh and Eighth Avenues

RESTAURANT FOR LEASE



NEIGHBORS

JAMES FAMULARO
 President

NOAM AZIZ
 Associate
 212.468.5984
 naziz@meridiancapital.com

SAMUEL MUKAMAL
 Associate
 212.468.5975
 smukamal@meridiancapital.com



All information supplied is from sources deemed reliable and is furnished subject to errors, omissions, modifications, removal of the listing from sale or lease, and to any listing conditions, including the rates and manner of payment of commissions for particular offerings imposed by Meridian Capital Group. This information may include estimates and projections prepared by Meridian Capital Group with respect to future events, and these future events may or may not actually occur. Such estimates and projections reflect various assumptions concerning anticipated results. While Meridian Capital Group believes these assumptions are reasonable, there can be no assurance that any of these estimates and projections will be correct. Therefore, actual results may vary materially from these estimates and projections. Any square footage dimensions set forth are approximate.