

1966

THIRD AVENUE EAST HARLEM, NYC

Corner of Third Avenue & East 108th Street

RETAIL FOR LEASE

APPROXIMATE SIZE

Space A (Inline #1966B): 500 SF
Space B (Corner #1966A): 500 SF
Space C (#189): 400 SF
~~Space D (#185 & #187): 600 SF Leased~~
~~Space E (#183): 300 SF Leased~~
Space F (#183 Second Floor): 300 SF + 250 SF Terrace

ASKING RENT

~~Space A: \$6,000/Month Reduced~~
Space A: \$5,500/Month
Space B: \$7,500/Month
Space C: \$3,750/Month
~~Space D: \$6,000/Month~~
~~Space E: \$3,500/Month~~
Space F: \$2,500/Month

FRONTAGE

Space A: 12 FT
Space B: 24 FT
Space C: 15 FT
~~Space D: 26 FT~~
~~Space E: 13 FT~~

TERM

5 Years

POSSESSION

Immediate

COMMENTS

- Newly developed building
- Spaces in white-box condition
- Spaces A & B can be combined
- Spaces A-C all have full basements
- Large building signage opportunity for corner

NEIGHBORS

A Taste of Seafood • Dunkin' • Benjamin Moore •
Rainbow • Little Caesar's • Jaguar Restaurant

TRANSPORTATION

6

JAMES FAMULARO

President

DANE HARLOWE

Director

212.468.5966

dharlowe@meridiancapital.com

ALEC NAMDAR

Associate

212.468.5915

anamdard@meridiancapital.com

NOAM AZIZ

Associate

212.468.5984

naziz@meridiancapital.com

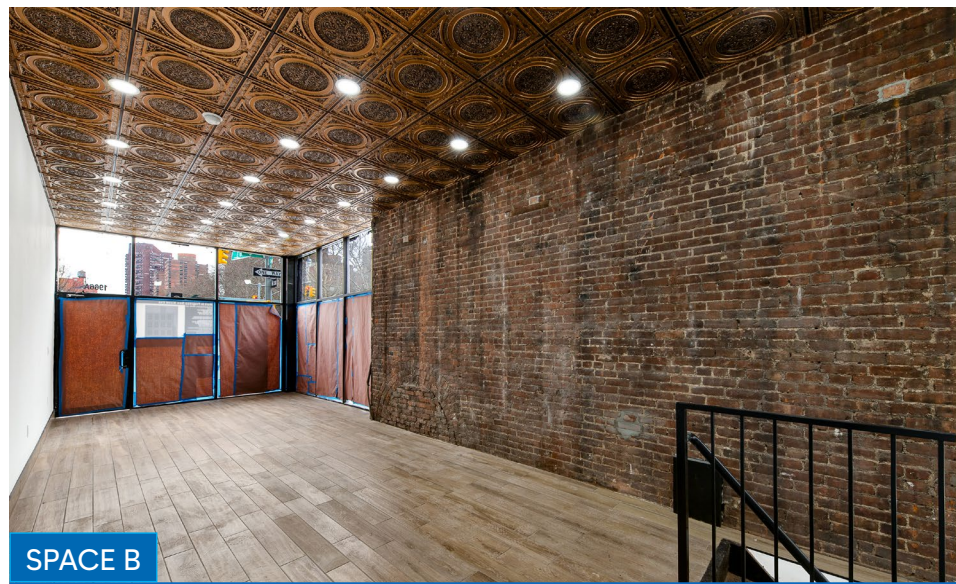


MERIDIAN
RETAIL LEASING

All information supplied is from sources deemed reliable and is furnished subject to errors, omissions, modifications, removal of the listing from sale or lease, and to any listing conditions, including the rates and manner of payment of commissions for particular offerings imposed by Meridian Capital Group. This information may include estimates and projections prepared by Meridian Capital Group with respect to future events, and these future events may or may not actually occur. Such estimates and projections reflect various assumptions concerning anticipated results. While Meridian Capital Group believes these assumptions are reasonable, there can be no assurance that any of these estimates and projections will be correct. Therefore, actual results may vary materially from these estimates and projections. Any square footage dimensions set forth are approximate.



SPACE A



SPACE B



SPACE C



SPACE D

INTERIOR

JAMES FAMULARO
President

DANE HARLOWE
Director
212.468.5966
dharrowe@meridiancapital.com

ALEC NAMDAR
Associate
212.468.5915
anamdar@meridiancapital.com

NOAM AZIZ
Associate
212.468.5984
naziz@meridiancapital.com



1966 THIRD AVENUE

EAST HARLEM, NYC | Corner of Third Avenue and East 108th Street

RETAIL FOR LEASE

NEIGHBORS

LEXINGTON AVENUE

THIRD AVENUE

SECOND AVENUE

Glendale Bread

China King

Mercado's Cuisine

Hope Community Inc

Fatima Discount Store

KULTIV8
STUDIOS



Express
Health

Pretty Ladies
Hair Braiding

Ps 83 Luis Munoz Rivera

Raspberry Deli Grocery

total by verizon

Paqueteria Mexicana

Anabelle Deli & Grocery

E 109TH STREET

Lexington Wine
& Liquor

La Cocina De Mama

The Golden Barbershop

Salgado Barber Shop

Salcedo Herman F DDS

Taqueria Guadalupe

Jaguar Restaurant



109 Pizzeria

1966
THIRD
AVENUE

E 108TH STREET

Isabella's Grocery Corp

DUNKIN'

Eyebrow Threading
Spas

Rainbow

Merida Beauty Salon

Modern Home Furniture

J C Barbershop

East Harlem Bottling Co



THE ALLIANCE



E 107TH STREET

Dj Barber Shop



Botanica El Congo

1705 Deli Grocery

Los Compi Barber Shop

Hang Cheng
Chinese Restaurant

Hong Kong



Little Caesars

Tom Dick & Harrys

Third Ave Deli



metro
by T-Mobile

Benjamin Moore®

Uptown Physician
Associates

MADrag

Bright Nails & Spa

Twins Cellular

Sam's Card & Gift



House of J & H

First Aid Medical



La Amisad

CHASE



JAMES FAMULARO
President

DANE HARLOWE
Director
212.468.5966
dharlowe@meridiancapital.com

ALEC NAMDAR
Associate
212.468.5915
anamdar@meridiancapital.com

NOAM AZIZ
Associate
212.468.5984
naziz@meridiancapital.com

MERIDIAN
RETAIL LEASING

All information supplied is from sources deemed reliable and is furnished subject to errors, omissions, modifications, removal of the listing from sale or lease, and to any listing conditions, including the rates and manner of payment of commissions for particular offerings imposed by Meridian Capital Group. This information may include estimates and projections prepared by Meridian Capital Group with respect to future events, and these future events may or may not actually occur. Such estimates and projections reflect various assumptions concerning anticipated results. While Meridian Capital Group believes these assumptions are reasonable, there can be no assurance that any of these estimates and projections will be correct. Therefore, actual results may vary materially from these estimates and projections. Any square footage dimensions set forth are approximate.