

141

EAST 55TH STREET MIDTOWN EAST, NYC

Between Third & Lexington Avenues

RETAIL FOR LEASE

APPROXIMATE SIZE

Ground Floor: 1,300 SF
No Basement

ASKING RENT

\$16,000/Month

POSSESSION

Immediate

TERM

5-10 Years

FRONTAGE

15 FT

COMMENTS

- Former hair salon
- Storage area with 2 closets and sinks in back
- High foot traffic Midtown East area
- Close proximity to subway stations, luxury residential and office buildings
- Ideal for dry uses
- No nail salons, cannabis or CBD

NEIGHBORS

Design Within Reach • Wolfgang's Steakhouse •
Whole Foods • Shake Shack • KazuNori • drybar
• Naya • Bobby Van's Steakhouse • Chipotle

TRANSPORTATION

N Q R 4 5 6 E

JAMES FAMULARO

President
646.658.7373
jfamularo@meridiancapital.com

JACOB MAYER

Associate
212.468.5926
jmayer@meridiancapital.com



All information supplied is from sources deemed reliable and is furnished subject to errors, omissions, modifications, removal of the listing from sale or lease, and to any listing conditions, including the rates and manner of payment of commissions for particular offerings imposed by Meridian Capital Group. This information may include estimates and projections prepared by Meridian Capital Group with respect to future events, and these future events may or may not actually occur. Such estimates and projections reflect various assumptions concerning anticipated results. While Meridian Capital Group believes these assumptions are reasonable, there can be no assurance that any of these estimates and projections will be correct. Therefore, actual results may vary materially from these estimates and projections. Any square footage dimensions set forth are approximate.



INTERIOR

JAMES FAMULARO

President
646.658.7373
jfamularo@meridiancapital.com

JACOB MAYER

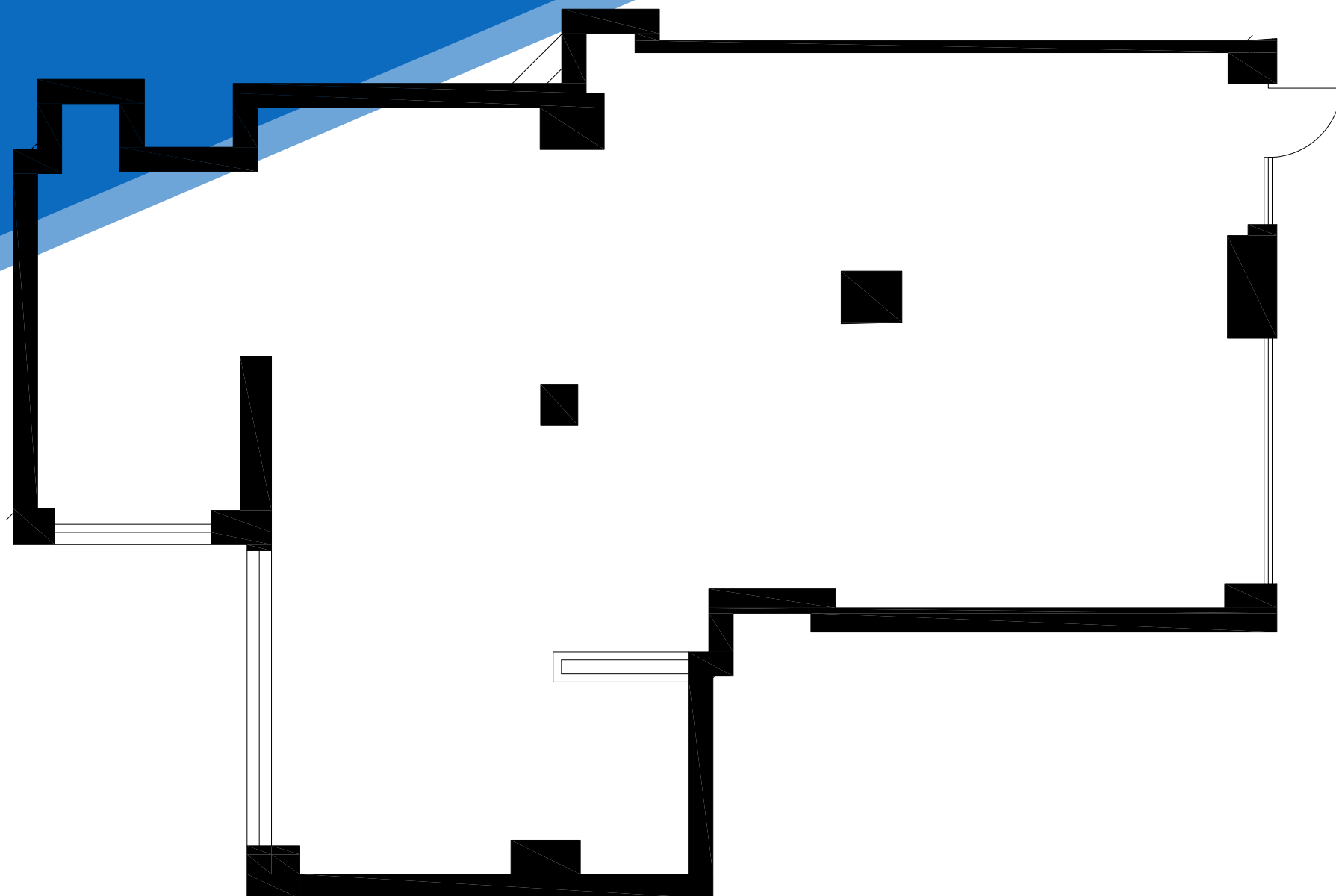
Associate
212.468.5926
jmayer@meridiancapital.com



141 EAST 55TH STREET
MIDTOWN EAST, NYC | Between Third and Lexington Avenues

RETAIL FOR LEASE

FLOOR PLAN



ENTRANCE ON EAST 55TH STREET

JAMES FAMULARO

President
646.658.7373
jfamularo@meridiancapital.com

JACOB MAYER

Associate
212.468.5926
jmayer@meridiancapital.com



All information supplied is from sources deemed reliable and is furnished subject to errors, omissions, modifications, removal of the listing from sale or lease, and to any listing conditions, including the rates and manner of payment of commissions for particular offerings imposed by Meridian Capital Group. This information may include estimates and projections prepared by Meridian Capital Group with respect to future events, and these future events may or may not actually occur. Such estimates and projections reflect various assumptions concerning anticipated results. While Meridian Capital Group believes these assumptions are reasonable, there can be no assurance that any of these estimates and projections will be correct. Therefore, actual results may vary materially from these estimates and projections. Any square footage dimensions set forth are approximate.



JAMES FAMULARO

President
646.658.7373
jfamularo@meridiancapital.com

JACOB MAYER

Associate
212.468.5926
jmayer@meridiancapital.com