

# 8-10

## EAST 125<sup>TH</sup> STREET HARLEM, NYC

Between Fifth & Madison Avenues

RETAIL FOR LEASE

### APPROXIMATE SIZE

2,842 SF

### ASKING RENT

\$80 PSF

### POSSESSION

Immediate

### TERM

5-15 Years

### FRONTAGE

40 FT

### COMMENTS

- Space is in white-box condition
- Full bathroom in place
- Plenty of natural light
- Heavy foot traffic along 125<sup>th</sup> Street

### NEIGHBORS

Edible Arrangements • UPS • Dunkin' • Shake Shack • Starbucks • Chase Bank • Marshall's • H&M • Chipotle • Just Salad • WeWork • Wingstop • Checkers • Zaro's • Duane Reade • Chase Bank • Wells Fargo • Foot Locker

### TRANSPORTATION

6 2 3



PROPERTY INFORMATION

JAMES FAMULARO  
President

DANE HARLOWE  
Director  
212.468.5966  
dharlowe@meridiancapital.com

ALEC NAMDAR  
Associate  
212.468.5915  
anamdar@meridiancapital.com

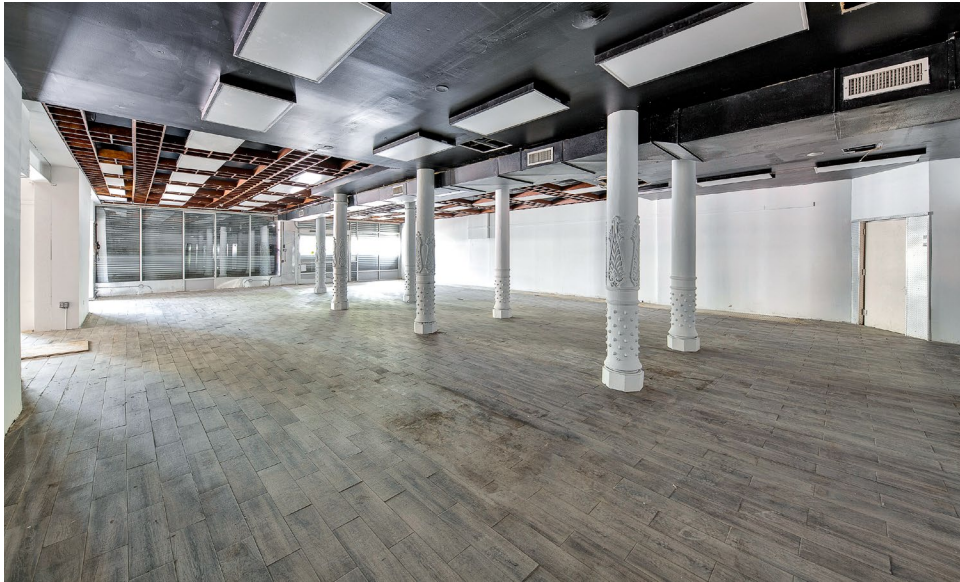
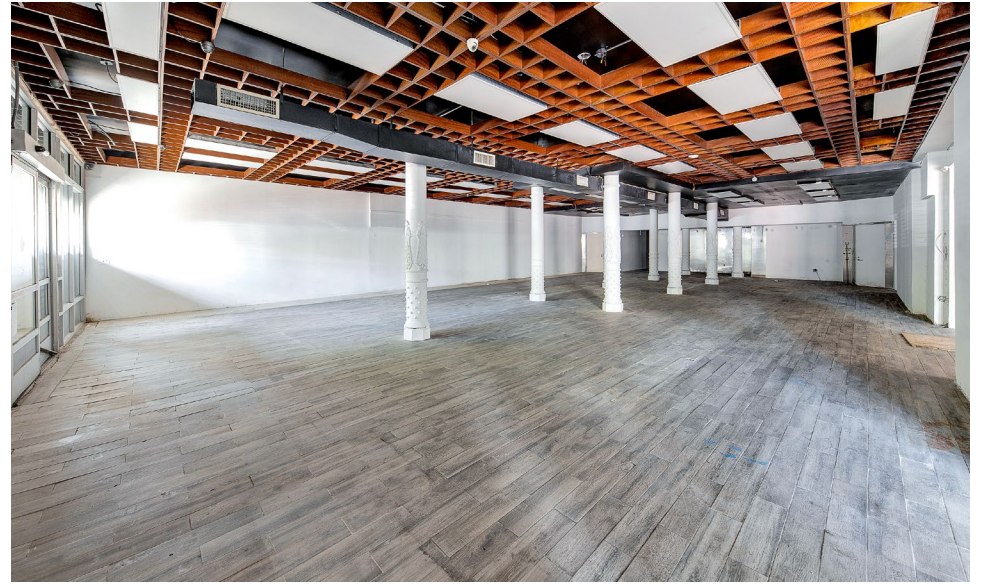
 **MERIDIAN**  
RETAIL LEASING

All information supplied is from sources deemed reliable and is furnished subject to errors, omissions, modifications, removal of the listing from sale or lease, and to any listing conditions, including the rates and manner of payment of commissions for particular offerings imposed by Meridian Capital Group. This information may include estimates and projections prepared by Meridian Capital Group with respect to future events, and these future events may or may not actually occur. Such estimates and projections reflect various assumptions concerning anticipated results. While Meridian Capital Group believes these assumptions are reasonable, there can be no assurance that any of these estimates and projections will be correct. Therefore, actual results may vary materially from these estimates and projections. Any square footage dimensions set forth are approximate.

# 8-10 EAST 125<sup>TH</sup> STREET

HARLEM, NYC | Between Fifth and Madison Avenues

RETAIL FOR LEASE



INTERIOR

**JAMES FAMULARO**  
President

**DANE HARLOWE**  
Director  
212.468.5966  
dharlowe@meridiancapital.com

**ALEC NAMDAR**  
Associate  
212.468.5915  
anamdar@meridiancapital.com



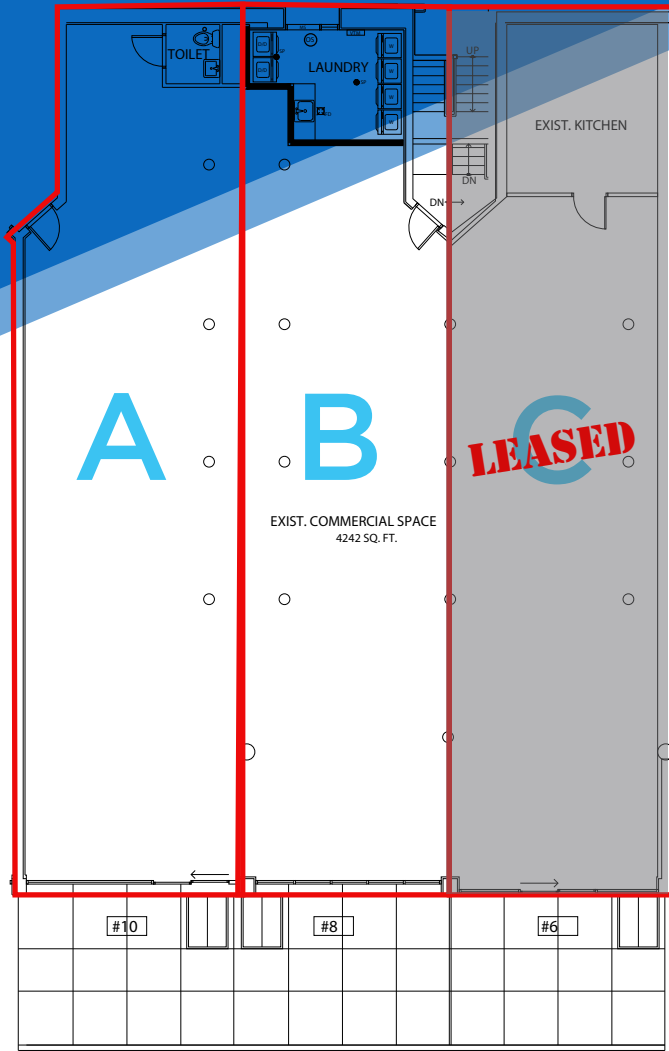
All information supplied is from sources deemed reliable and is furnished subject to errors, omissions, modifications, removal of the listing from sale or lease, and to any listing conditions, including the rates and manner of payment of commissions for particular offerings imposed by Meridian Capital Group. This information may include estimates and projections prepared by Meridian Capital Group with respect to future events, and these future events may or may not actually occur. Such estimates and projections reflect various assumptions concerning anticipated results. While Meridian Capital Group believes these assumptions are reasonable, there can be no assurance that any of these estimates and projections will be correct. Therefore, actual results may vary materially from these estimates and projections. Any square footage dimensions set forth are approximate.

# 8-10 EAST 125<sup>TH</sup> STREET

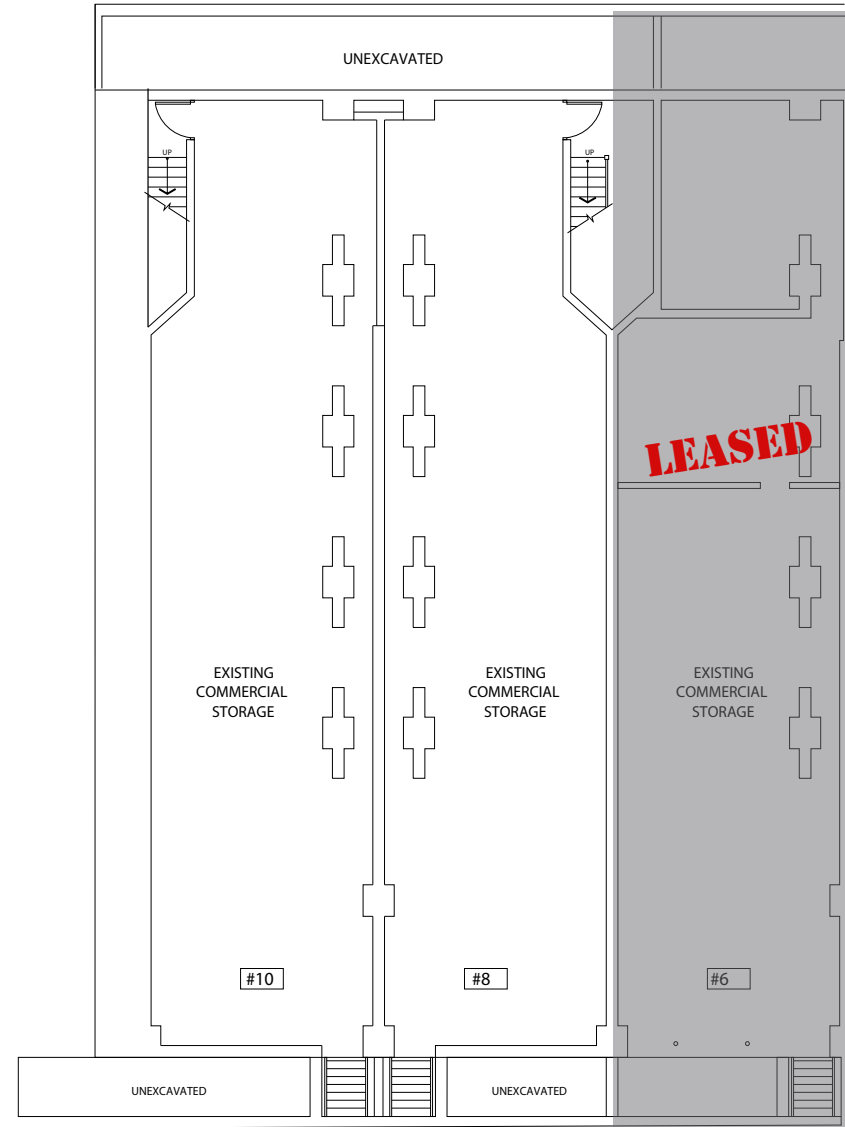
HARLEM, NYC | Between Fifth and Madison Avenues

RETAIL FOR LEASE

FLOOR PLAN



EAST 125<sup>TH</sup> STREET  
GROUND FLOOR



CELLAR

JAMES FAMULARO  
President

DANE HARLOWE  
Director  
212.468.5966  
dharlowe@meridiancapital.com

ALEC NAMDAR  
Associate  
212.468.5915  
anamdar@meridiancapital.com



All information supplied is from sources deemed reliable and is furnished subject to errors, omissions, modifications, removal of the listing from sale or lease, and to any listing conditions, including the rates and manner of payment of commissions for particular offerings imposed by Meridian Capital Group. This information may include estimates and projections prepared by Meridian Capital Group with respect to future events, and these future events may or may not actually occur. Such estimates and projections reflect various assumptions concerning anticipated results. While Meridian Capital Group believes these assumptions are reasonable, there can be no assurance that any of these estimates and projections will be correct. Therefore, actual results may vary materially from these estimates and projections. Any square footage dimensions set forth are approximate.

8-10 EAST 125<sup>TH</sup> STREET

HARLEM, NYC | Between Fifth and Madison Avenues

RETAIL FOR LEASE

W 126TH STREET



E 126TH STREET



E 126TH STREET



W 125TH STREET



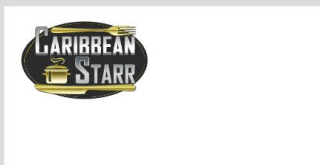
E 125TH STREET



E 125TH STREET



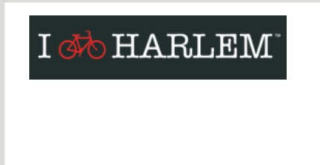
W 124TH STREET



E 124TH STREET



W 123RD STREET



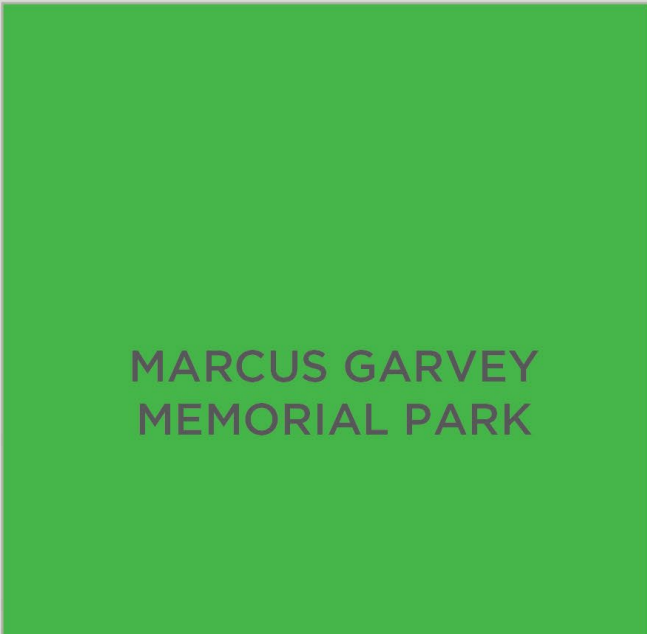
E 123RD STREET



W 122ND STREET



E 122ND STREET



5TH AVENUE

MADISON AVENUE

PARK AVENUE

LEXINGTON AVENUE

NEIGHBORS

JAMES FAMULARO  
President

DANE HARLOWE  
Director  
212.468.5966  
dharlowe@meridiancapital.com

ALEC NAMDAR  
Associate  
212.468.5915  
anamdar@meridiancapital.com



All information supplied is from sources deemed reliable and is furnished subject to errors, omissions, modifications, removal of the listing from sale or lease, and to any listing conditions, including the rates and manner of payment of commissions for particular offerings imposed by Meridian Capital Group. This information may include estimates and projections prepared by Meridian Capital Group with respect to future events, and these future events may or may not actually occur. Such estimates and projections reflect various assumptions concerning anticipated results. While Meridian Capital Group believes these assumptions are reasonable, there can be no assurance that any of these estimates and projections will be correct. Therefore, actual results may vary materially from these estimates and projections. Any square footage dimensions set forth are approximate.