

177

DUANE STREET TRIBECA, NYC

Between Greenwich & Staples Streets

RETAIL/RESTAURANT FOR LEASE

APPROXIMATE SIZE

Ground Floor: 2,100 SF
Basement: 800 SF

ASKING RENT

\$24,500/Month

POSSESSION

Arranged

TERM

10 Years

FRONTAGE

15 FT

COMMENTS

- Pristine space located in the heart of Tribeca
- High residential area with tremendous foot traffic
- Across from Duane Park
- Potential T.I. package for experienced operators
- All uses considered

NEIGHBORS

Duane Park Patisserie • Scalini Fedeli • Chip City
• Skin Laundry • Cynthia Rowley • Sarabeth's •
Biscuits & Bath • Orange Theory • Zucker's Bagels

TRANSPORTATION

1 2 3 A C E



PROPERTY INFORMATION

JAMES FAMULARO
President

KEVIN BISCONTI
Director
212.468.5962
kbisconti@meridiancapital.com

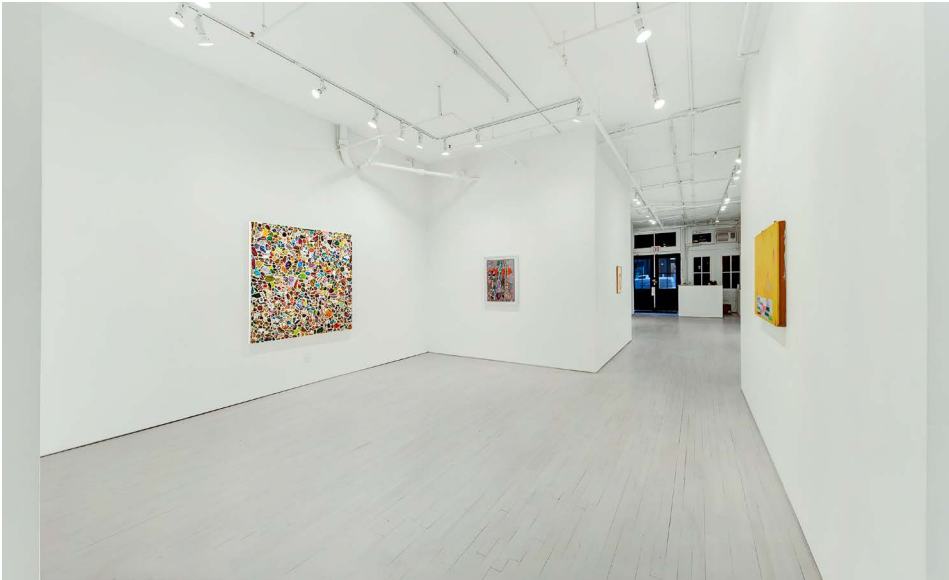
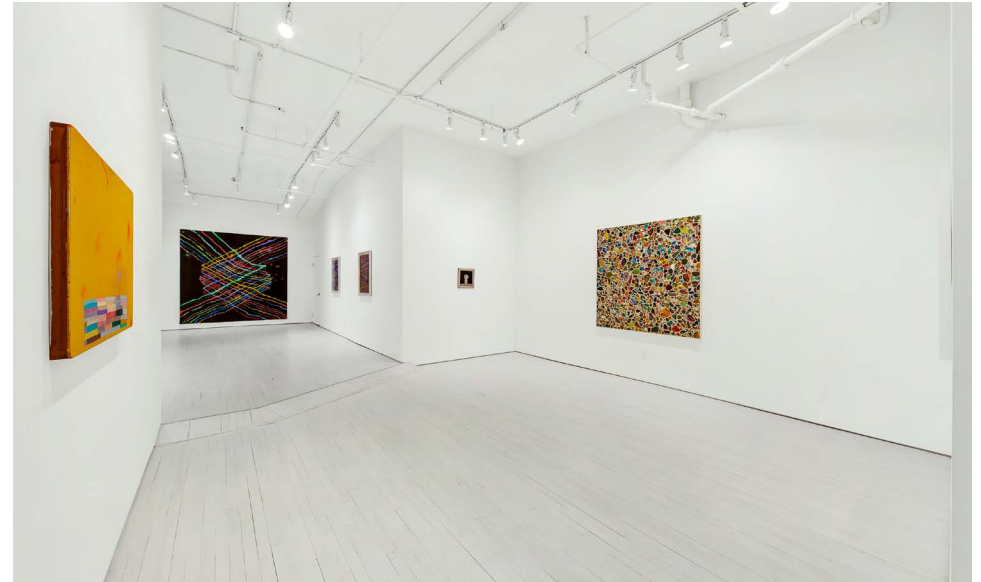
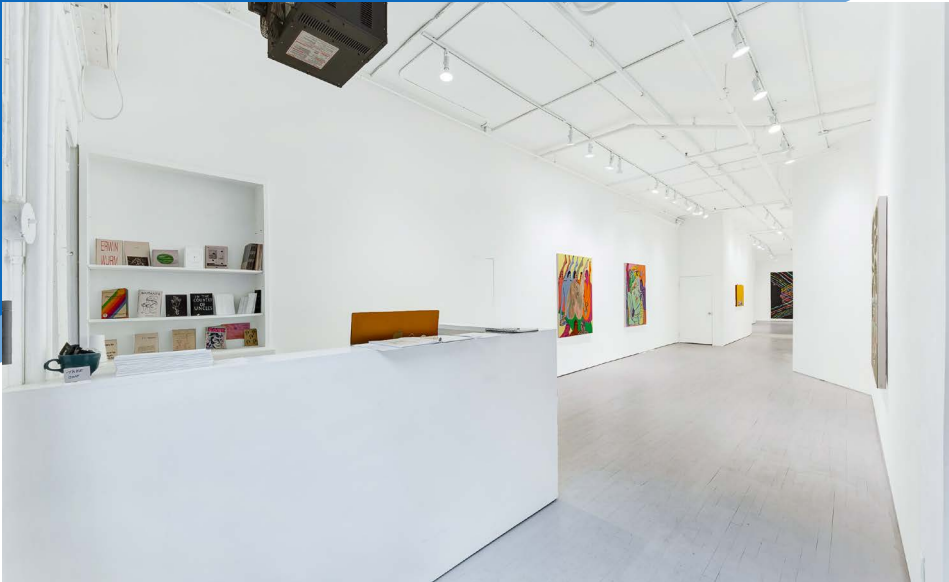
 **MERIDIAN**
RETAIL LEASING

All information supplied is from sources deemed reliable and is furnished subject to errors, omissions, modifications, removal of the listing from sale or lease, and to any listing conditions, including the rates and manner of payment of commissions for particular offerings imposed by Meridian Capital Group. This information may include estimates and projections prepared by Meridian Capital Group with respect to future events, and these future events may or may not actually occur. Such estimates and projections reflect various assumptions concerning anticipated results. While Meridian Capital Group believes these assumptions are reasonable, there can be no assurance that any of these estimates and projections will be correct. Therefore, actual results may vary materially from these estimates and projections. Any square footage dimensions set forth are approximate.

177 DUANE STREET

TRIBECA, NYC | Between Greenwich and Staples Streets

RETAIL/RESTAURANT FOR LEASE



INTERIOR

JAMES FAMULARO
President

KEVIN BISCONTI
Director
212.468.5962
kbisconti@meridiancapital.com

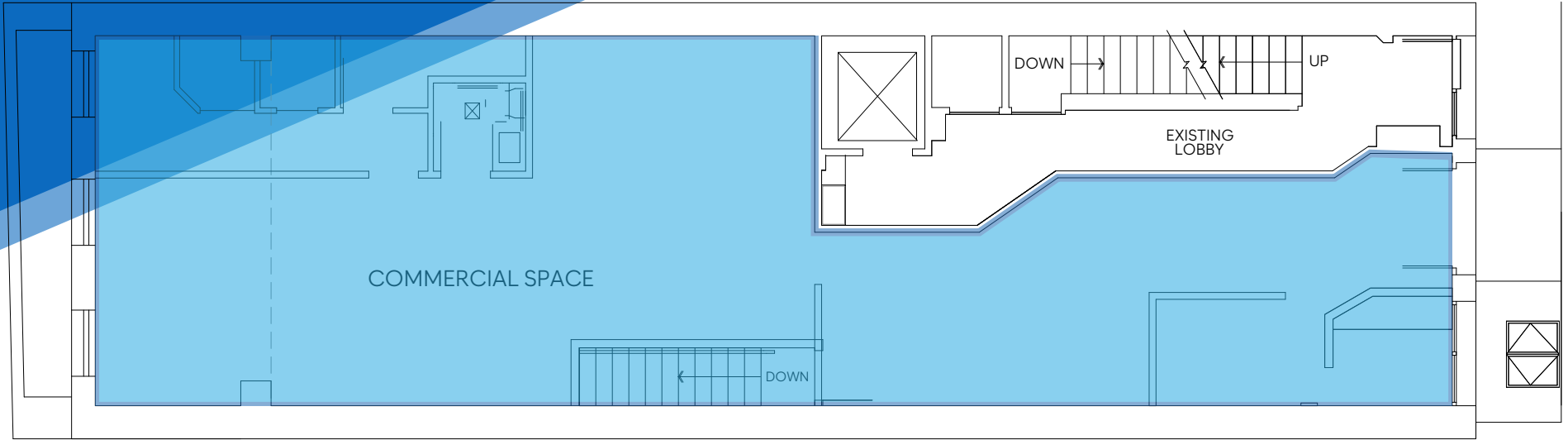


All information supplied is from sources deemed reliable and is furnished subject to errors, omissions, modifications, removal of the listing from sale or lease, and to any listing conditions, including the rates and manner of payment of commissions for particular offerings imposed by Meridian Capital Group. This information may include estimates and projections prepared by Meridian Capital Group with respect to future events, and these future events may or may not actually occur. Such estimates and projections reflect various assumptions concerning anticipated results. While Meridian Capital Group believes these assumptions are reasonable, there can be no assurance that any of these estimates and projections will be correct. Therefore, actual results may vary materially from these estimates and projections. Any square footage dimensions set forth are approximate.

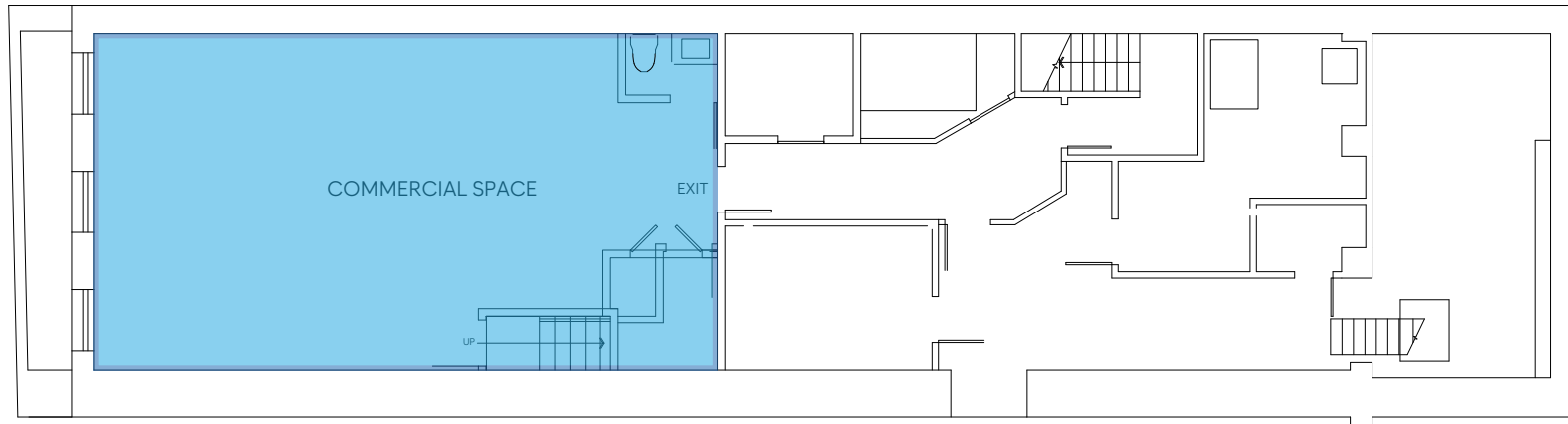
177 DUANE STREET

TRIBECA, NYC | Between Greenwich and Staples Streets

RETAIL/RESTAURANT FOR LEASE



GROUND FLOOR



BASEMENT

INTERIOR

JAMES FAMULARO
President

KEVIN BISCONTI
Director
212.468.5962
kbisconti@meridiancapital.com



All information supplied is from sources deemed reliable and is furnished subject to errors, omissions, modifications, removal of the listing from sale or lease, and to any listing conditions, including the rates and manner of payment of commissions for particular offerings imposed by Meridian Capital Group. This information may include estimates and projections prepared by Meridian Capital Group with respect to future events, and these future events may or may not actually occur. Such estimates and projections reflect various assumptions concerning anticipated results. While Meridian Capital Group believes these assumptions are reasonable, there can be no assurance that any of these estimates and projections will be correct. Therefore, actual results may vary materially from these estimates and projections. Any square footage dimensions set forth are approximate.

177 DUANE STREET

TRIBECA, NYC | Between Greenwich and Staples Streets

RETAIL/RESTAURANT FOR LEASE

The map displays 177 Duane Street in a central blue circle. Surrounding streets include Harrison Street, Alton Lane, Hudson Street, Thomas Street, Duane Street, Read Street, Greenwich Street, Jay Street, Cynthia Rowley, Staples Street, and Broadway. Various businesses are marked with logos, including Walgreens, V Café, A+E Studios, The Odeon, Disney, Citi, and many others. A 'PS 150' logo is also visible on the left side of the map.

NEIGHBORS

JAMES FAMILARO
President

KEVIN BISCONTI
Director
212.468.5962
kbisconti@meridiancapital.com



All information supplied is from sources deemed reliable and is furnished subject to errors, omissions, modifications, removal of the listing from sale or lease, and to any listing conditions, including the rates and manner of payment of commissions for particular offerings imposed by Meridian Capital Group. This information may include estimates and projections prepared by Meridian Capital Group with respect to future events, and these future events may or may not actually occur. Such estimates and projections reflect various assumptions concerning anticipated results. While Meridian Capital Group believes these assumptions are reasonable, there can be no assurance that any of these estimates and projections will be correct. Therefore, actual results may vary materially from these estimates and projections. Any square footage dimensions set forth are approximate.