

15

AVENUE B EAST VILLAGE, NYC

Southeast Corner of Avenue B & East 2nd Street

RESTAURANT FOR LEASE

APPROXIMATE SIZE

Ground Floor: 1,210 SF
Cellar: 473 SF

ASKING RENT

\$15,000/Month

POSSESSION

Immediate

TERM

5-15 Years

FRONTAGE

85 FT Wraparound

COMMENTS

- Prime East Village/Alphabet City corner for lease
- Located in a great night life corridor
- No liquor license restrictions
- Perfect for a wine bar or café
- At the base of a luxury residential building

NEIGHBORS

Eastpoint • Domakase • Downtime • Wiggle Room • Foul Witch • Katz's Delicatessen • The Mayfly • Dirty French • Mercury Lounge • Lucien

TRANSPORTATION

B D F J Z



JAMES FAMULARO
President

JOHN ROESCH
Director
212.468.5971
jroesch@meridiancapital.com

NOAM AZIZ
Associate
212.468.5984
naziz@meridiancapital.com

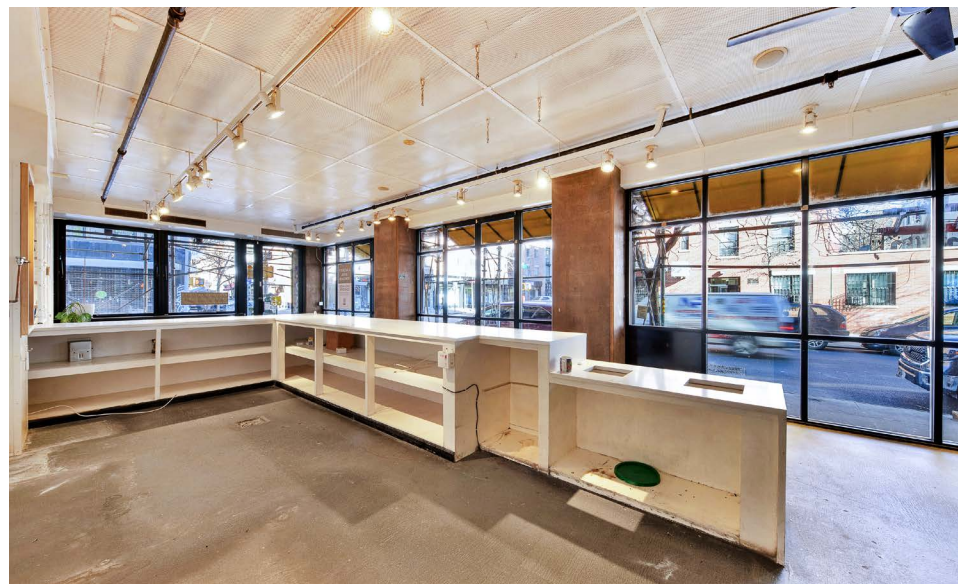


All information supplied is from sources deemed reliable and is furnished subject to errors, omissions, modifications, removal of the listing from sale or lease, and to any listing conditions, including the rates and manner of payment of commissions for particular offerings imposed by Meridian Capital Group. This information may include estimates and projections prepared by Meridian Capital Group with respect to future events, and these future events may or may not actually occur. Such estimates and projections reflect various assumptions concerning anticipated results. While Meridian Capital Group believes these assumptions are reasonable, there can be no assurance that any of these estimates and projections will be correct. Therefore, actual results may vary materially from these estimates and projections. Any square footage dimensions set forth are approximate.

15 AVENUE B
EAST VILLAGE, NYC | Southeast Corner of Avenue B and East 2nd Street

RESTAURANT FOR LEASE

INTERIOR



JAMES FAMULARO
President

JOHN ROESCH
Director
212.468.5971
jroesch@meridiancapital.com

NOAM AZIZ
Associate
212.468.5984
naziz@meridiancapital.com

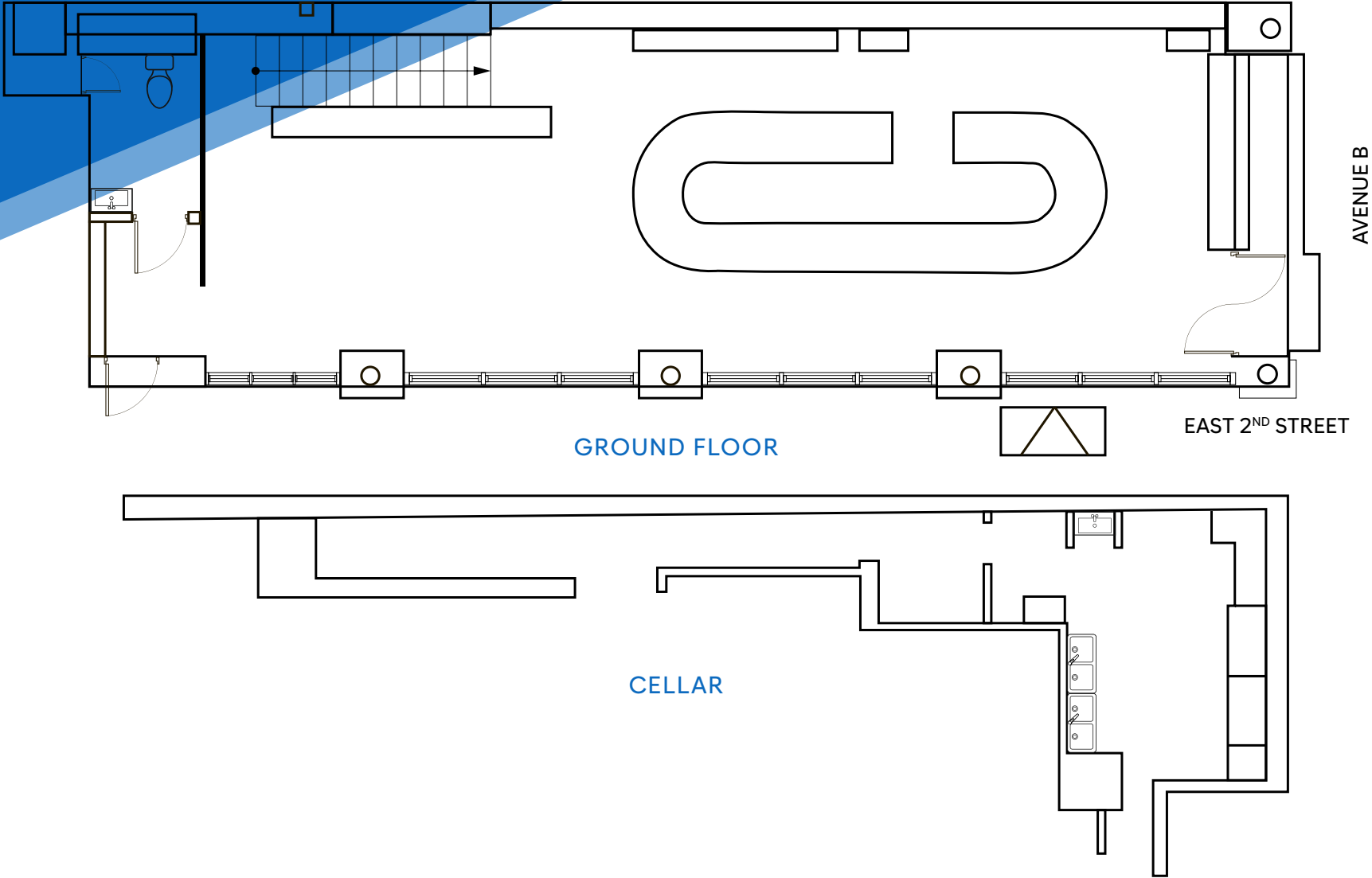
 **MERIDIAN**
RETAIL LEASING

All information supplied is from sources deemed reliable and is furnished subject to errors, omissions, modifications, removal of the listing from sale or lease, and to any listing conditions, including the rates and manner of payment of commissions for particular offerings imposed by Meridian Capital Group. This information may include estimates and projections prepared by Meridian Capital Group with respect to future events, and these future events may or may not actually occur. Such estimates and projections reflect various assumptions concerning anticipated results. While Meridian Capital Group believes these assumptions are reasonable, there can be no assurance that any of these estimates and projections will be correct. Therefore, actual results may vary materially from these estimates and projections. Any square footage dimensions set forth are approximate.

15 AVENUE B
EAST VILLAGE, NYC | Southeast Corner of Avenue B and East 2nd Street

RESTAURANT FOR LEASE

FLOOR PLAN



JAMES FAMULARO
President

JOHN ROESCH
Director
212.468.5971
jroesch@meridiancapital.com

NOAM AZIZ
Associate
212.468.5984
naziz@meridiancapital.com



All information supplied is from sources deemed reliable and is furnished subject to errors, omissions, modifications, removal of the listing from sale or lease, and to any listing conditions, including the rates and manner of payment of commissions for particular offerings imposed by Meridian Capital Group. This information may include estimates and projections prepared by Meridian Capital Group with respect to future events, and these future events may or may not actually occur. Such estimates and projections reflect various assumptions concerning anticipated results. While Meridian Capital Group believes these assumptions are reasonable, there can be no assurance that any of these estimates and projections will be correct. Therefore, actual results may vary materially from these estimates and projections. Any square footage dimensions set forth are approximate.

EAST VILLAGE, NYC | Southeast Corner of Avenue B and East 2nd Street



NEIGHBORS

JOHN ROESCH
Director
212.468.5971
jroesch@meridiancapital.com

NOAM AZIZ
Associate
212.468.5984
naziz@meridiancapital.com



MERIDIAN
RETAIL LEASING

All information supplied is from sources deemed reliable and is furnished subject to errors, omissions, modifications, removal of the listing from sale or lease, and to any listing conditions, including the rates and manner of payment of commissions for particular offerings imposed by Meridian Capital Group. This information may include estimates and projections prepared by Meridian Capital Group with respect to future events, and these future events may or may not actually occur. Such estimates and projections reflect various assumptions concerning anticipated results. While Meridian Capital Group believes these assumptions are reasonable, there can be no assurance that any of these estimates and projections will be correct. Therefore, actual results may vary materially from these estimates and projections. Any square footage dimensions set forth are approximate.