

12

EAST 125TH STREET HARLEM, NYC

Between Fifth & Madison Avenues

RETAIL FOR LEASE

APPROXIMATE SIZE

1,200 SF + Basement

ASKING RENT

\$10,000/Month

POSSESSION

Immediate

TERM

5-15 Years

FRONTAGE

20 FT

COMMENTS

- Turn-key restaurant space
- Vented
- Walk-in boxes in basement
- Prime Harlem location

NEIGHBORS

TJ Maxx • Insomnia Cookies • Wing Stop •
Chipotle • Sylvia's • Edible Arrangements • Just
Salad • Cohen's Fashion Optical • Whole Foods

TRANSPORTATION

6 2 3



PROPERTY INFORMATION

JAMES FAMULARO
President

DANE HARLOWE
Director
212.468.5966
dharlowe@meridiancapital.com

ALEC NAMDAR
Associate
212.468.5915
anamdar@meridiancapital.com

 **MERIDIAN**
RETAIL LEASING

All information supplied is from sources deemed reliable and is furnished subject to errors, omissions, modifications, removal of the listing from sale or lease, and to any listing conditions, including the rates and manner of payment of commissions for particular offerings imposed by Meridian Capital Group. This information may include estimates and projections prepared by Meridian Capital Group with respect to future events, and these future events may or may not actually occur. Such estimates and projections reflect various assumptions concerning anticipated results. While Meridian Capital Group believes these assumptions are reasonable, there can be no assurance that any of these estimates and projections will be correct. Therefore, actual results may vary materially from these estimates and projections. Any square footage dimensions set forth are approximate.

12 EAST 125TH STREET

EAST HARLEM, NYC | Between Fifth and Madison Avenues

RETAIL FOR LEASE



INTERIOR

JAMES FAMULARO
President

DANE HARLOWE
Director
212.468.5966
dharlowe@meridiancapital.com

ALEC NAMDAR
Associate
212.468.5915
anamdar@meridiancapital.com

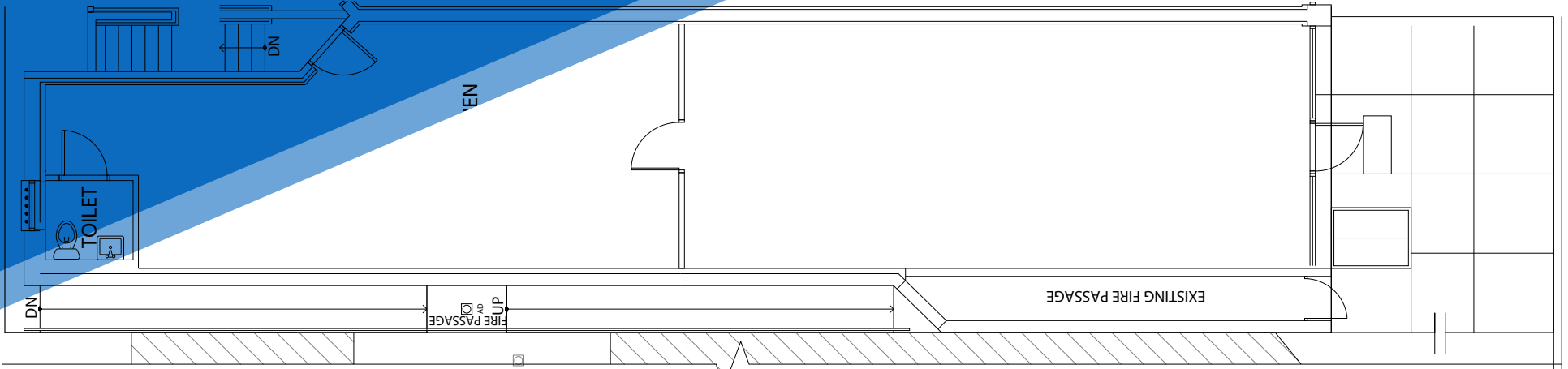


All information supplied is from sources deemed reliable and is furnished subject to errors, omissions, modifications, removal of the listing from sale or lease, and to any listing conditions, including the rates and manner of payment of commissions for particular offerings imposed by Meridian Capital Group. This information may include estimates and projections prepared by Meridian Capital Group with respect to future events, and these future events may or may not actually occur. Such estimates and projections reflect various assumptions concerning anticipated results. While Meridian Capital Group believes these assumptions are reasonable, there can be no assurance that any of these estimates and projections will be correct. Therefore, actual results may vary materially from these estimates and projections. Any square footage dimensions set forth are approximate.

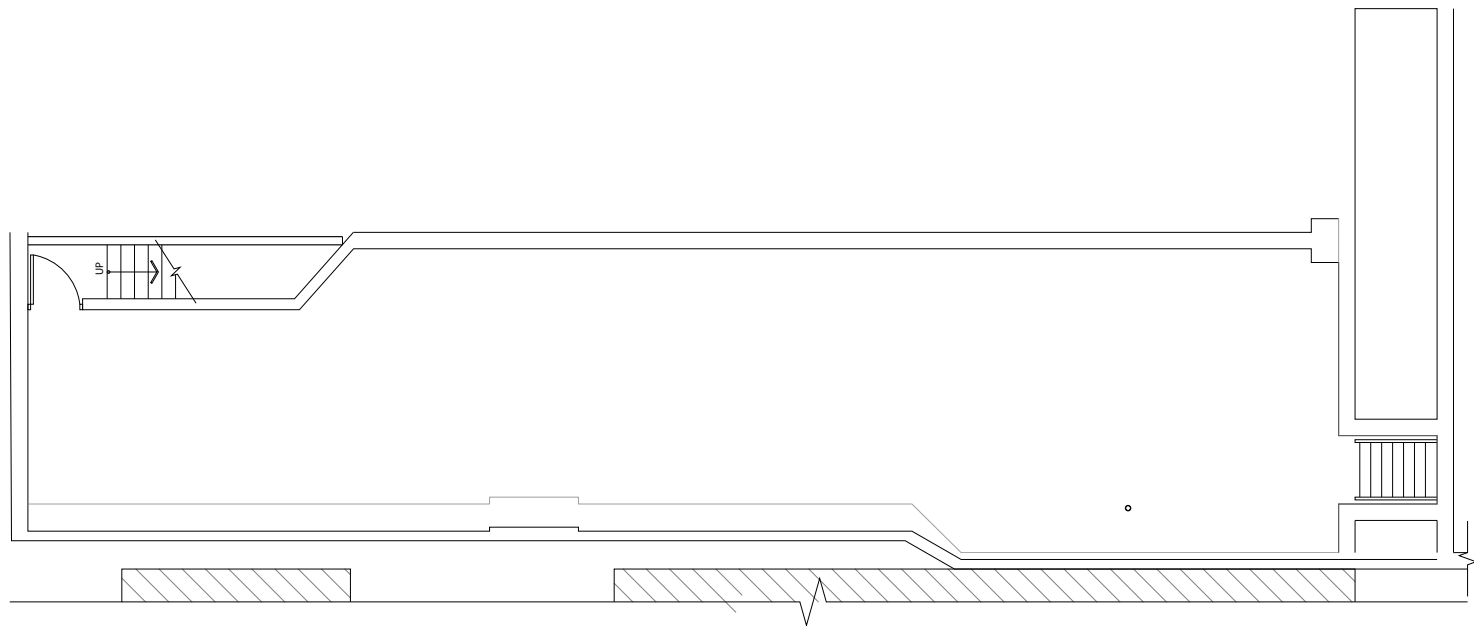
12 EAST 125TH STREET

EAST HARLEM, NYC | Between Fifth and Madison Avenues

RETAIL FOR LEASE



GROUND FLOOR



BASEMENT

FLOOR PLAN

JAMES FAMULARO
President

DANE HARLOWE
Director
212.468.5966
dharlowe@meridiancapital.com

ALEC NAMDAR
Associate
212.468.5915
anamdar@meridiancapital.com



All information supplied is from sources deemed reliable and is furnished subject to errors, omissions, modifications, removal of the listing from sale or lease, and to any listing conditions, including the rates and manner of payment of commissions for particular offerings imposed by Meridian Capital Group. This information may include estimates and projections prepared by Meridian Capital Group with respect to future events, and these future events may or may not actually occur. Such estimates and projections reflect various assumptions concerning anticipated results. While Meridian Capital Group believes these assumptions are reasonable, there can be no assurance that any of these estimates and projections will be correct. Therefore, actual results may vary materially from these estimates and projections. Any square footage dimensions set forth are approximate.

12 EAST 125TH STREET

EAST HARLEM, NYC | Between Fifth and Madison Avenues

RETAIL FOR LEASE

W 129TH STREET

E 129TH STREET

W 128TH STREET

E 128TH STREET

W 127TH STREET

E 127TH STREET

W 126TH STREET

E 126TH STREET

W 125TH STREET

E 125TH STREET

W 124TH STREET

E 124TH STREET

MALCOLM X BLVD

FIFTH AVENUE

MADISON AVENUE

12 EAST 125TH STREET

NEIGHBORS

JAMES FAMULARO
President

DANE HARLOWE
Director
212.468.5966
dharlowe@meridiancapital.com

ALEC NAMDAR
Associate
212.468.5915
anamdar@meridiancapital.com



All information supplied is from sources deemed reliable and is furnished subject to errors, omissions, modifications, removal of the listing from sale or lease, and to any listing conditions, including the rates and manner of payment of commissions for particular offerings imposed by Meridian Capital Group. This information may include estimates and projections prepared by Meridian Capital Group with respect to future events, and these future events may or may not actually occur. Such estimates and projections reflect various assumptions concerning anticipated results. While Meridian Capital Group believes these assumptions are reasonable, there can be no assurance that any of these estimates and projections will be correct. Therefore, actual results may vary materially from these estimates and projections. Any square footage dimensions set forth are approximate.