

181

MOTT STREET

NOLITA, NYC

Between Broome & Kenmare Streets

RETAIL FOR LEASE



APPROXIMATE SIZE

Ground Floor: 2,478 SF
Second Floor: 2,478 SF
Basement: 2,478 SF

ASKING RENT

Ground Floor: \$115 PSF
Second Floor: \$50 PSF

POSSESSION

Immediate

TERM

10-15 Years

FRONTAGE

25 FT

COMMENTS

- Historic space in Nolita, ideal for restaurant
- Space can be vented
- Will be delivered in white-box condition
- Floors can be leased together or separately
- Strong co-tenancy
- All uses considered

NEIGHBORS

Pasquale Jones • Seamore's • Gold Bar • Bondi Sushi • The M Jewelers • Egg Shop • Cha Cha Matcha • Spring Lounge • Bondi Sushi • Veja • Black Seed Bagels • 19 Cleveland • Vig Bar • The Butchers Daughter • Lombardi's NYC

TRANSPORTATION



JAMES FAMULARO

President
646.658.7373
jfamularo@meridiancapital.com

JORDAN LANGER

Associate
212.468.5977
jlanger@meridiancapital.com



All information supplied is from sources deemed reliable and is furnished subject to errors, omissions, modifications, removal of the listing from sale or lease, and to any listing conditions, including the rates and manner of payment of commissions for particular offerings imposed by Meridian Capital Group. This information may include estimates and projections prepared by Meridian Capital Group with respect to future events, and these future events may or may not actually occur. Such estimates and projections reflect various assumptions concerning anticipated results. While Meridian Capital Group believes these assumptions are reasonable, there can be no assurance that any of these estimates and projections will be correct. Therefore, actual results may vary materially from these estimates and projections. Any square footage dimensions set forth are approximate.

181 MOTT STREET

NOLITA, NYC | Between Broome and Kenmare Streets

RETAIL FOR LEASE



INTERIOR

JAMES FAMULARO

President
646.658.7373
jfamularo@meridiancapital.com

JORDAN LANGER

Associate
212.468.5977
jlanger@meridiancapital.com

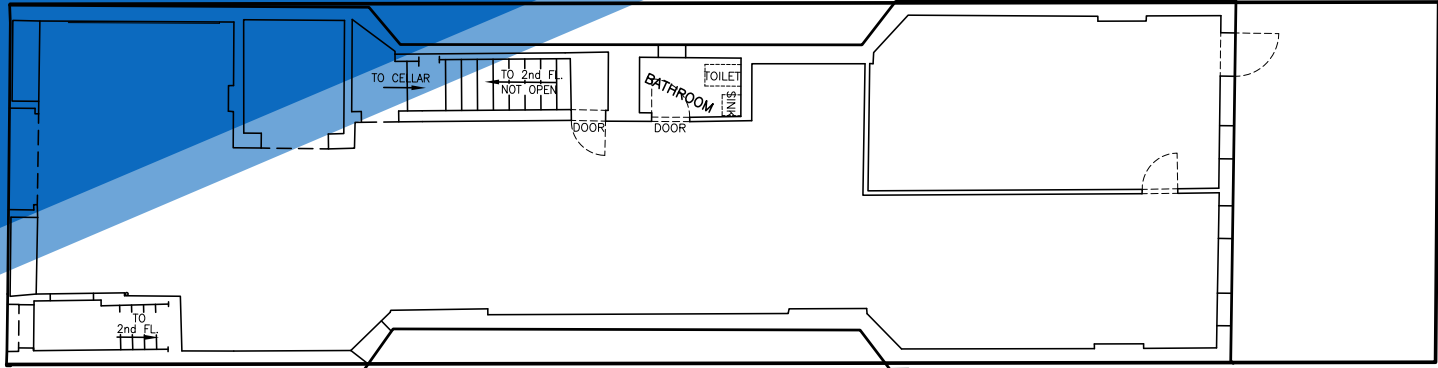


All information supplied is from sources deemed reliable and is furnished subject to errors, omissions, modifications, removal of the listing from sale or lease, and to any listing conditions, including the rates and manner of payment of commissions for particular offerings imposed by Meridian Capital Group. This information may include estimates and projections prepared by Meridian Capital Group with respect to future events, and these future events may or may not actually occur. Such estimates and projections reflect various assumptions concerning anticipated results. While Meridian Capital Group believes these assumptions are reasonable, there can be no assurance that any of these estimates and projections will be correct. Therefore, actual results may vary materially from these estimates and projections. Any square footage dimensions set forth are approximate.

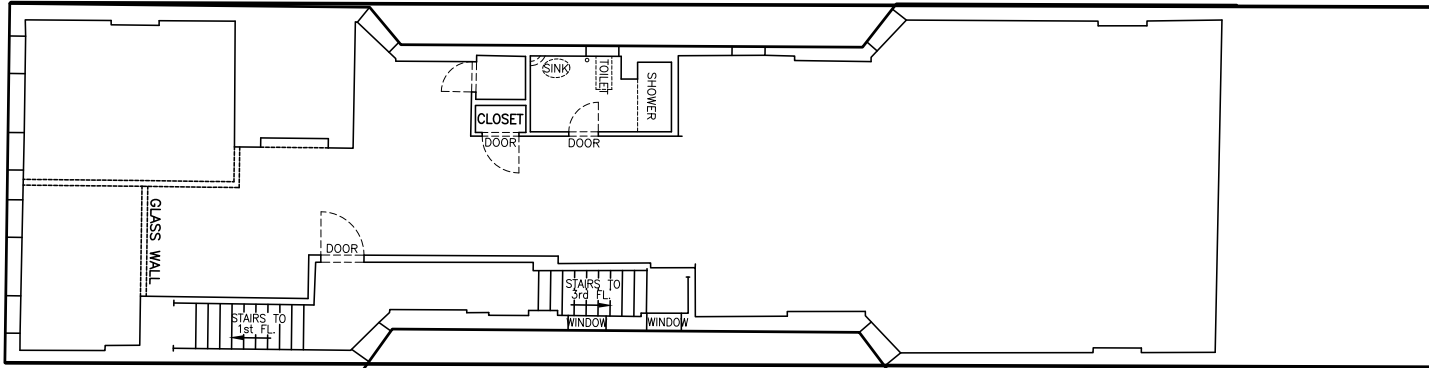
181 MOTT STREET

NOLITA, NYC | Between Broome and Kenmare Streets

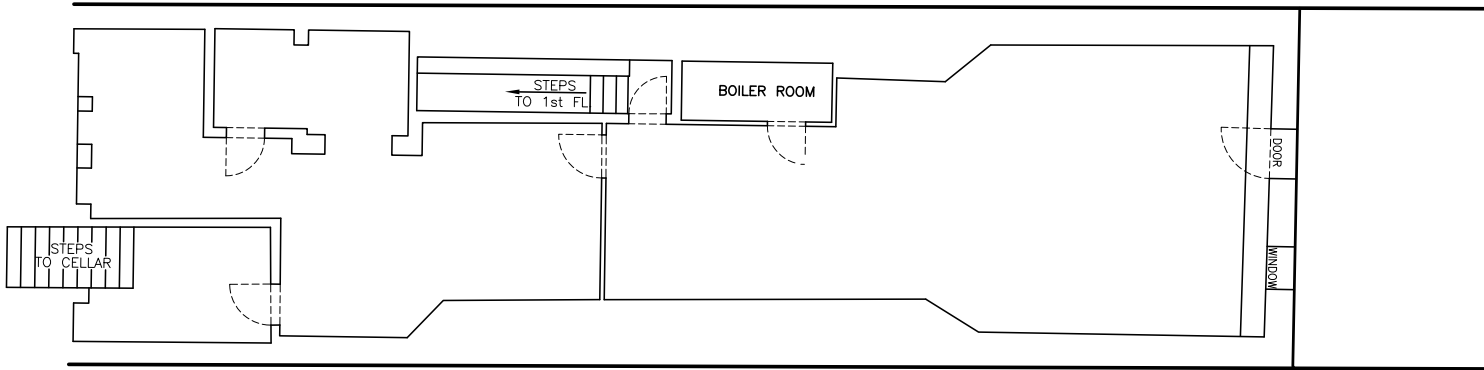
RETAIL FOR LEASE



GROUND FLOOR



SECOND FLOOR



LOWER LEVEL

FLOOR PLAN

JAMES FAMULARO

President
646.658.7373
jfamularo@meridiancapital.com

JORDAN LANGER

Associate
212.468.5977
jlanger@meridiancapital.com



All information supplied is from sources deemed reliable and is furnished subject to errors, omissions, modifications, removal of the listing from sale or lease, and to any listing conditions, including the rates and manner of payment of commissions for particular offerings imposed by Meridian Capital Group. This information may include estimates and projections prepared by Meridian Capital Group with respect to future events, and these future events may or may not actually occur. Such estimates and projections reflect various assumptions concerning anticipated results. While Meridian Capital Group believes these assumptions are reasonable, there can be no assurance that any of these estimates and projections will be correct. Therefore, actual results may vary materially from these estimates and projections. Any square footage dimensions set forth are approximate.

181 MOTT STREET

NOLITA, NYC | Between Broome and Kenmare Streets

RETAIL FOR LEASE



NEIGHBORS

JAMES FAMULARO

President
646.658.7373
jfamularo@meridiancapital.com

JORDAN LANGER

Associate
212.468.5977
jlanger@meridiancapital.com



All information supplied is from sources deemed reliable and is furnished subject to errors, omissions, modifications, removal of the listing from sale or lease, and to any listing conditions, including the rates and manner of payment of commissions for particular offerings imposed by Meridian Capital Group. This information may include estimates and projections prepared by Meridian Capital Group with respect to future events, and these future events may or may not actually occur. Such estimates and projections reflect various assumptions concerning anticipated results. While Meridian Capital Group believes these assumptions are reasonable, there can be no assurance that any of these estimates and projections will be correct. Therefore, actual results may vary materially from these estimates and projections. Any square footage dimensions set forth are approximate.