

1643

YORK AVENUE
UPPER EAST SIDE, NYC

Between East 86th & 87th Streets

RETAIL/RESTAURANT FOR LEASE

RETAIL SPACE FOR LEASE

John Roesch

212.468.5971



Garrett Kelly

212.468.5939

APPROXIMATE SIZE

Ground Floor: 1,200 SF
Lower Level: 600 SF

ASKING RENT

\$12,000/Month

POSSESSION

Immediate

TERM

5+ Years

FRONTAGE

16 FT

COMMENTS

- Clean white-box space
- Open floor plan with no columns
- Ability to vent space through 1-story set back
- 2 restrooms in place on ground floor

NEIGHBORS

Tal Bagels • Carl Schurz Park • Starbucks • Bagel Bob's • Ryan's Daughter • The Mansion • Stretch Lab • Stella & Fly • Hutch & Waldo • Whole Foods • Elio's • Green Kitchen • Breatly School

TRANSPORTATION



PROPERTY INFORMATION

JAMES FAMULARO
President

JOHN ROESCH
Director
212.468.5971
jroesch@meridiancapital.com

GARRETT KELLY
Director
212.468.5939
gkelly@meridiancapital.com

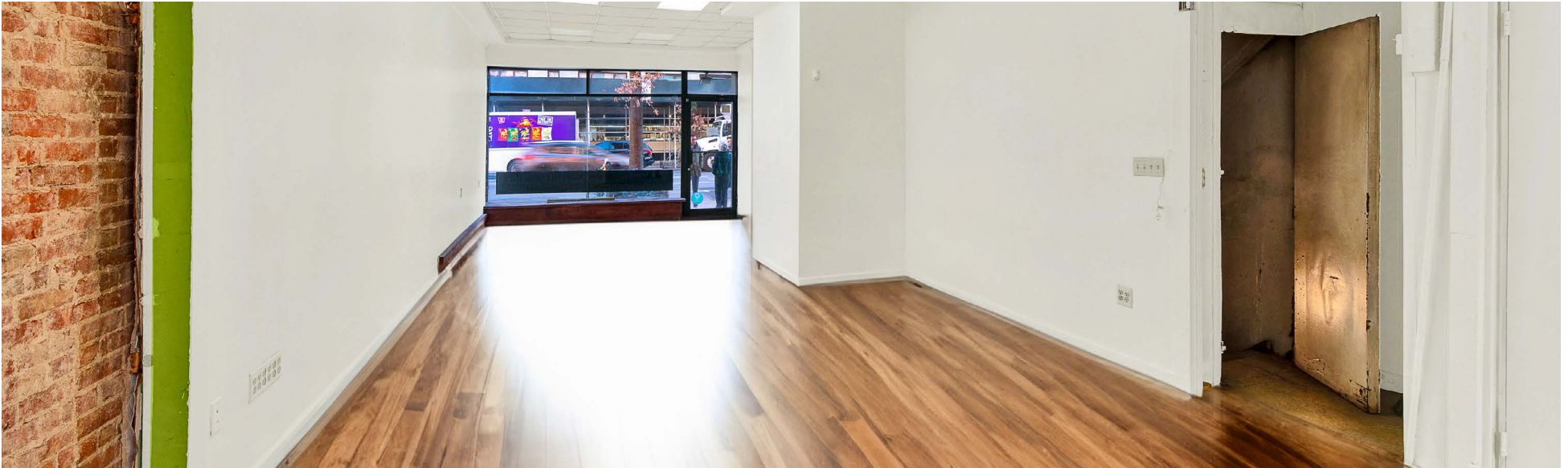
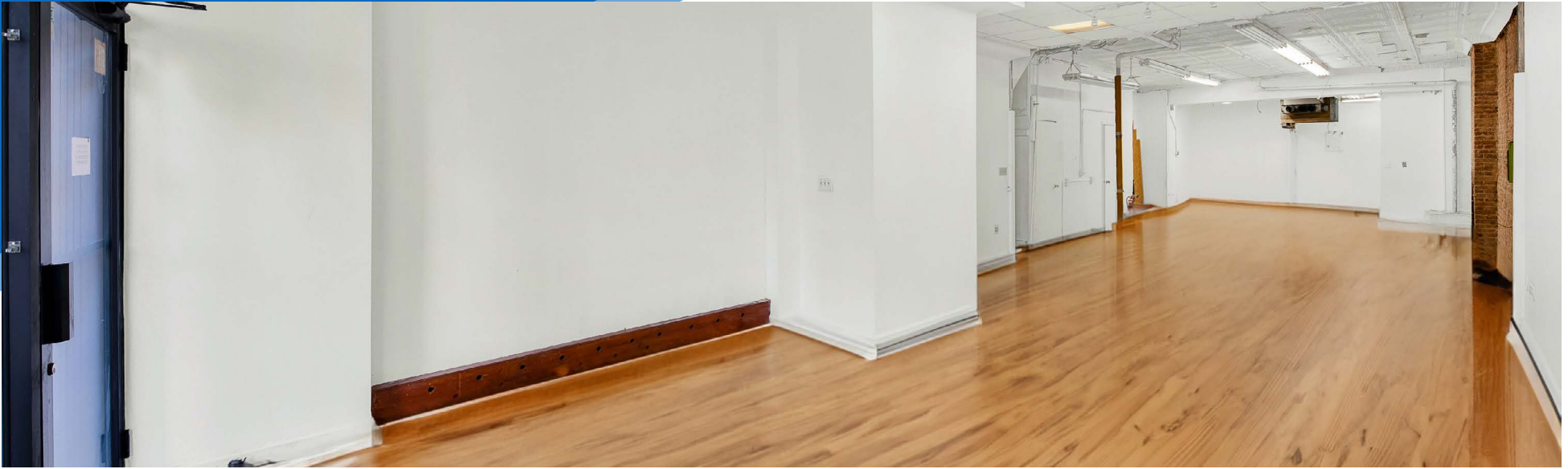


All information supplied is from sources deemed reliable and is furnished subject to errors, omissions, modifications, removal of the listing from sale or lease, and to any listing conditions, including the rates and manner of payment of commissions for particular offerings imposed by Meridian Capital Group. This information may include estimates and projections prepared by Meridian Capital Group with respect to future events, and these future events may or may not actually occur. Such estimates and projections reflect various assumptions concerning anticipated results. While Meridian Capital Group believes these assumptions are reasonable, there can be no assurance that any of these estimates and projections will be correct. Therefore, actual results may vary materially from these estimates and projections. Any square footage dimensions set forth are approximate.

1643 YORK AVENUE

UPPER EAST SIDE, NYC | Between East 86th and 87th Streets

RETAIL/RESTAURANT FOR LEASE



INTERIOR

JAMES FAMULARO
President

JOHN ROESCH
Director
212.468.5971
jroesch@meridiancapital.com

GARRETT KELLY
Director
212.468.5939
gkelly@meridiancapital.com



All information supplied is from sources deemed reliable and is furnished subject to errors, omissions, modifications, removal of the listing from sale or lease, and to any listing conditions, including the rates and manner of payment of commissions for particular offerings imposed by Meridian Capital Group. This information may include estimates and projections prepared by Meridian Capital Group with respect to future events, and these future events may or may not actually occur. Such estimates and projections reflect various assumptions concerning anticipated results. While Meridian Capital Group believes these assumptions are reasonable, there can be no assurance that any of these estimates and projections will be correct. Therefore, actual results may vary materially from these estimates and projections. Any square footage dimensions set forth are approximate.

1643 YORK AVENUE

UPPER EAST SIDE, NYC | Between East 86th and 87th Streets

RETAIL/RESTAURANT FOR LEASE

1643 YORK AVENUE

NEIGHBORS

SECOND AVENUE | **FIRST AVENUE** | **YORK AVENUE**

E 88TH STREET

E 87TH STREET

E 86TH STREET

E 85TH STREET

E 84TH STREET

Businesses shown on map: CASCALOTE RESTAURANT, NY NJ, VIETNAAM, Roma PIZZA, Stella & Fly, Y.C.S. (Yorkville Community School), MY METRO FIT, Heavenly Market, Effy's Cafe on York, THE CHURCH OF THE HOLY TRINITY, Regina's GROCERY, SUKI, ICHIRO, Conmigo, 7 ELEVEN, Phil Hughes Bar, DYM{F}?, HEAVENLY MARKET & PIZZA, Sunita nails and spa, Chu Laundry, Dragon 88, Avoca Pet Town, CitiFloral, MAXXIA, SPELLMAN GALLERY, SUNNY BEAUTY SPA, York Food & Convenience, HEAVELY CAFE, Slayton Cleaners Inc, MySIC HOUSE, CVS pharmacy, UPS, DOGGIE STYLES PET GROOMING, JOSEPH HAIR STUDIO, PENJABI JUNCTION, Gotham Pizza, Lashevet, PENGUN CITY SWIM, Tal Bagels, The International Preschools, Somebody's Darling, St. JOSEPH'S SCHOOL - YORKVILLE, STRETCH LAB, DUANEreade by Walgreens, RIDGEMOOD SAVINGS BANK, EVF, Heidelberg Restaurant, MAZ mezcal, MATTRESS FIRM, SL, City MD, POKE RESTAURANT, LUNA ROSSA, Bondurants, CRAFT + CARRY, RYAN'S DAUGHTER, Starbucks, James M. McNally, Bailey's Corner, The Mat Two, Black Star bakery & cafe, DOGS CATS NYC, Sunshine Health Spa, FUMO, Italianissimo Ristorante, yorkville DAY SPA, hybrid florist, NY Laser Aesthetics and Electrolysis, CHAPIN, TACO, Sushi Jin, MADAME BONTE, NICA TRATTORIA, BOTTE, Sushi suki, MODUWA Deli, the five flames.

JAMES FAMULARO
President

JOHN ROESCH
Director
212.468.5971
jroesch@meridiancapital.com

GARRETT KELLY
Director
212.468.5939
gkelly@meridiancapital.com



All information supplied is from sources deemed reliable and is furnished subject to errors, omissions, modifications, removal of the listing from sale or lease, and to any listing conditions, including the rates and manner of payment of commissions for particular offerings imposed by Meridian Capital Group. This information may include estimates and projections prepared by Meridian Capital Group with respect to future events, and these future events may or may not actually occur. Such estimates and projections reflect various assumptions concerning anticipated results. While Meridian Capital Group believes these assumptions are reasonable, there can be no assurance that any of these estimates and projections will be correct. Therefore, actual results may vary materially from these estimates and projections. Any square footage dimensions set forth are approximate.