

# 160

## NORTH 12<sup>TH</sup> STREET WILLIAMSBURG, BROOKLYN

Between Bedford Avenue & Berry Street

RESTAURANT AND ROOFTOP FOR LEASE



### APPROXIMATE SIZE

Ground Floor: 5,000 SF  
Rooftop: 3,000 SF

### ASKING RENT

Upon Request

### POSSESSION

Immediate

### TERM

Negotiable

### COMMENTS

- Located inside the 8-story 64-guest room at the Coda Hotel in Williamsburg
- Beautifully built-out restaurant and rooftop bar
- Kitchen designed by Michelin Star chef
- Year-round rooftop use
- Spaces must be leased together
- 4AM restaurant liquor license / 2AM rooftop liquor license
- No key-money

### NEIGHBORS

Brooklyn Billiards • Brooklyn Bowl • The Whiskey Brooklyn • The William Vale Hotel • Suit Supply • The Gutter • The Backyard Bar • Kith

### TRANSPORTATION



**B32 B62**

### JAMES FAMULARO

President  
646.658.7373  
jfamularo@meridiancapital.com

### BOBBY ORTENSE

Associate  
212.468.5953  
bortense@meridiancapital.com



All information supplied is from sources deemed reliable and is furnished subject to errors, omissions, modifications, removal of the listing from sale or lease, and to any listing conditions, including the rates and manner of payment of commissions for particular offerings imposed by Meridian Capital Group. This information may include estimates and projections prepared by Meridian Capital Group with respect to future events, and these future events may or may not actually occur. Such estimates and projections reflect various assumptions concerning anticipated results. While Meridian Capital Group believes these assumptions are reasonable, there can be no assurance that any of these estimates and projections will be correct. Therefore, actual results may vary materially from these estimates and projections. Any square footage dimensions set forth are approximate.

160 NORTH 12<sup>TH</sup> STREET

WILLIAMSBURG, BROOKLYN | Between Berry Street and Bedford Avenue

RESTAURANT AND ROOFTOP FOR LEASE

**CODA Williamsburg**, a newly renovated, non-union hotel fully unencumbered by brand and management. Located in the heart of Williamsburg, New York City's burgeoning lifestyle neighborhood, the 64-key Hotel showcases a lively ground floor restaurant (Bohemia), an active rooftop food & beverage program (Creatures) with sweeping views of the Manhattan skyline, one of New York City's only outdoor pools, and premier accessibility to Manhattan and the surrounding boroughs. The property's location directly facing McCarren Park showcases a unique neighborhood-centric location and travel experience for guests.



ABOUT

**JAMES FAMULARO**

President  
646.658.7373  
jfamularo@meridiancapital.com

**BOBBY ORTENSE**

Associate  
212.468.5953  
bortense@meridiancapital.com



All information supplied is from sources deemed reliable and is furnished subject to errors, omissions, modifications, removal of the listing from sale or lease, and to any listing conditions, including the rates and manner of payment of commissions for particular offerings imposed by Meridian Capital Group. This information may include estimates and projections prepared by Meridian Capital Group with respect to future events, and these future events may or may not actually occur. Such estimates and projections reflect various assumptions concerning anticipated results. While Meridian Capital Group believes these assumptions are reasonable, there can be no assurance that any of these estimates and projections will be correct. Therefore, actual results may vary materially from these estimates and projections. Any square footage dimensions set forth are approximate.

# 160 NORTH 12<sup>TH</sup> STREET

WILLIAMSBURG, BROOKLYN | Between Berry Street and Bedford Avenue

## RESTAURANT AND ROOFTOP FOR LEASE



INTERIOR | GROUND FLOOR

### JAMES FAMULARO

President  
646.658.7373  
jfamularo@meridiancapital.com

### BOBBY ORTENSE

Associate  
212.468.5953  
bortense@meridiancapital.com



All information supplied is from sources deemed reliable and is furnished subject to errors, omissions, modifications, removal of the listing from sale or lease, and to any listing conditions, including the rates and manner of payment of commissions for particular offerings imposed by Meridian Capital Group. This information may include estimates and projections prepared by Meridian Capital Group with respect to future events, and these future events may or may not actually occur. Such estimates and projections reflect various assumptions concerning anticipated results. While Meridian Capital Group believes these assumptions are reasonable, there can be no assurance that any of these estimates and projections will be correct. Therefore, actual results may vary materially from these estimates and projections. Any square footage dimensions set forth are approximate.

160 NORTH 12<sup>TH</sup> STREET

WILLIAMSBURG, BROOKLYN | Between Berry Street and Bedford Avenue

RESTAURANT AND ROOFTOP FOR LEASE



EXTERIOR | ROOFTOP

JAMES FAMULARO

President  
646.658.7373  
jfamularo@meridiancapital.com

BOBBY ORTENSE

Associate  
212.468.5953  
bortense@meridiancapital.com



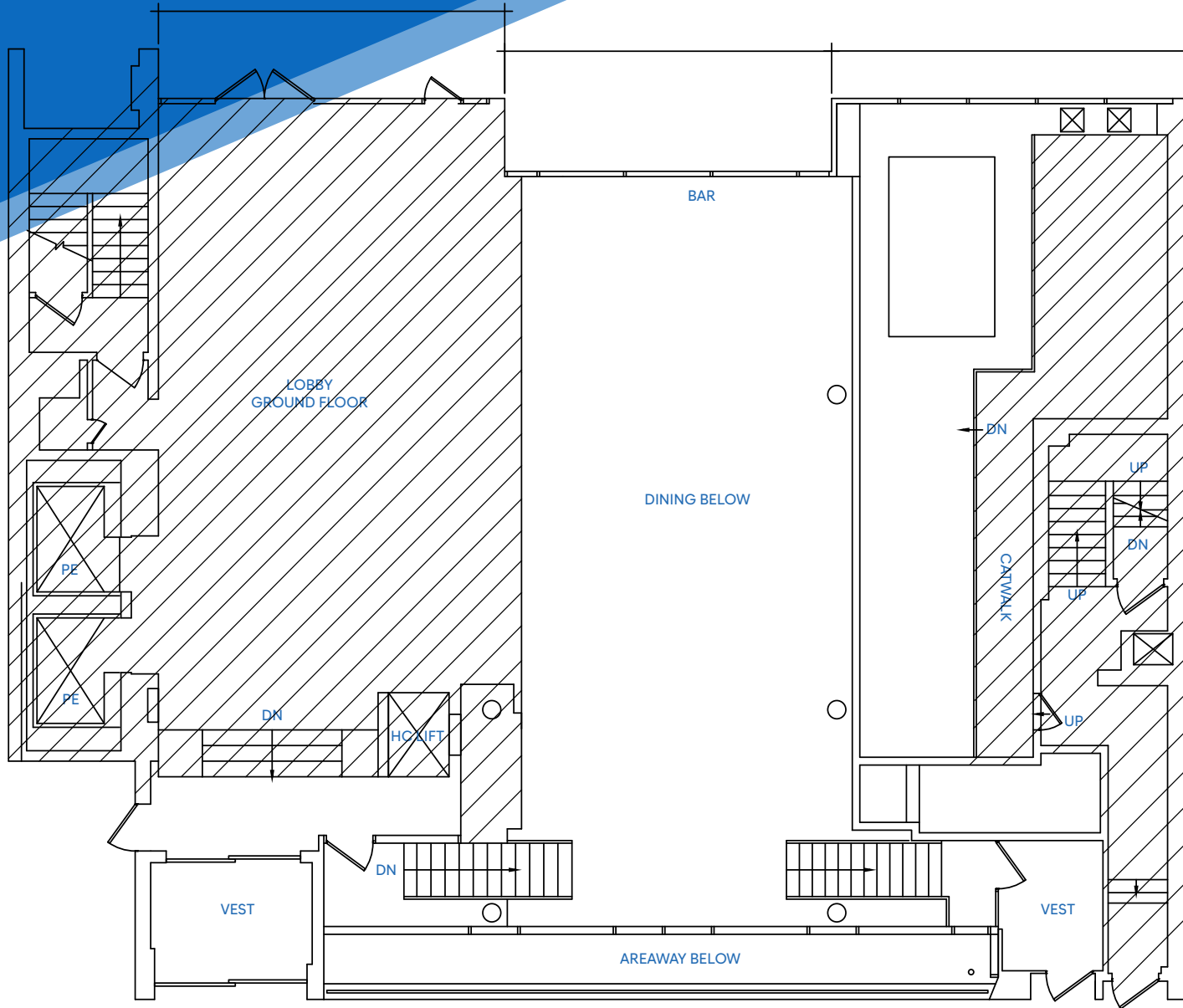
All information supplied is from sources deemed reliable and is furnished subject to errors, omissions, modifications, removal of the listing from sale or lease, and to any listing conditions, including the rates and manner of payment of commissions for particular offerings imposed by Meridian Capital Group. This information may include estimates and projections prepared by Meridian Capital Group with respect to future events, and these future events may or may not actually occur. Such estimates and projections reflect various assumptions concerning anticipated results. While Meridian Capital Group believes these assumptions are reasonable, there can be no assurance that any of these estimates and projections will be correct. Therefore, actual results may vary materially from these estimates and projections. Any square footage dimensions set forth are approximate.

# 160 NORTH 12<sup>TH</sup> STREET

WILLIAMSBURG, BROOKLYN | Between Berry Street and Bedford Avenue

## RESTAURANT AND ROOFTOP FOR LEASE

FLOOR PLAN | GROUND FLOOR



**JAMES FAMULARO**

President  
646.658.7373  
jfamularo@meridiancapital.com

**BOBBY ORTENSE**

Associate  
212.468.5953  
bortense@meridiancapital.com



All information supplied is from sources deemed reliable and is furnished subject to errors, omissions, modifications, removal of the listing from sale or lease, and to any listing conditions, including the rates and manner of payment of commissions for particular offerings imposed by Meridian Capital Group. This information may include estimates and projections prepared by Meridian Capital Group with respect to future events, and these future events may or may not actually occur. Such estimates and projections reflect various assumptions concerning anticipated results. While Meridian Capital Group believes these assumptions are reasonable, there can be no assurance that any of these estimates and projections will be correct. Therefore, actual results may vary materially from these estimates and projections. Any square footage dimensions set forth are approximate.

# 160 NORTH 12<sup>TH</sup> STREET

WILLIAMSBURG, BROOKLYN | Between Berry Street and Bedford Avenue

## RESTAURANT AND ROOFTOP FOR LEASE

FLOOR PLAN | ROOFTOP



### JAMES FAMULARO

President  
646.658.7373  
jfamularo@meridiancapital.com

### BOBBY ORTENSE

Associate  
212.468.5953  
bortense@meridiancapital.com

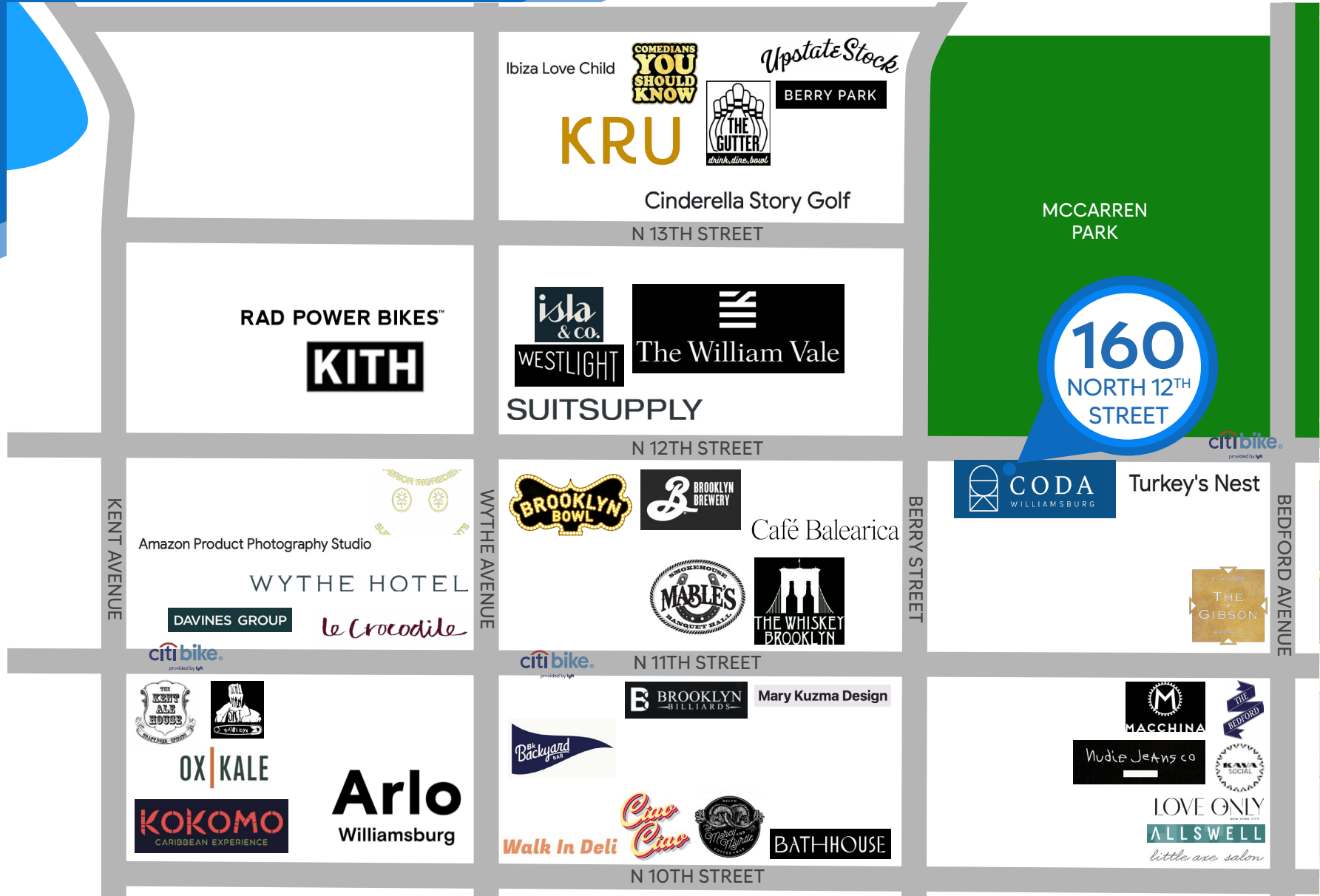


All information supplied is from sources deemed reliable and is furnished subject to errors, omissions, modifications, removal of the listing from sale or lease, and to any listing conditions, including the rates and manner of payment of commissions for particular offerings imposed by Meridian Capital Group. This information may include estimates and projections prepared by Meridian Capital Group with respect to future events, and these future events may or may not actually occur. Such estimates and projections reflect various assumptions concerning anticipated results. While Meridian Capital Group believes these assumptions are reasonable, there can be no assurance that any of these estimates and projections will be correct. Therefore, actual results may vary materially from these estimates and projections. Any square footage dimensions set forth are approximate.

160 NORTH 12<sup>TH</sup> STREET

WILLIAMSBURG, BROOKLYN | Between Berry Street and Bedford Avenue

RESTAURANT AND ROOFTOP FOR LEASE



NEIGHBORS

JAMES FAMULARO

President  
646.658.7373  
jfamularo@meridiancapital.com

BOBBY ORTENSE

Associate  
212.468.5953  
bortense@meridiancapital.com



All information supplied is from sources deemed reliable and is furnished subject to errors, omissions, modifications, removal of the listing from sale or lease, and to any listing conditions, including the rates and manner of payment of commissions for particular offerings imposed by Meridian Capital Group. This information may include estimates and projections prepared by Meridian Capital Group with respect to future events, and these future events may or may not actually occur. Such estimates and projections reflect various assumptions concerning anticipated results. While Meridian Capital Group believes these assumptions are reasonable, there can be no assurance that any of these estimates and projections will be correct. Therefore, actual results may vary materially from these estimates and projections. Any square footage dimensions set forth are approximate.