

# 1502

## AMSTERDAM AVENUE

HARLEM, NYC

Between West 134<sup>th</sup> & 135<sup>th</sup> Streets

RESTAURANT FOR LEASE



### APPROXIMATE SIZE

Ground Floor: 783 SF  
Basement: 400 SF

### ASKING RENT

\$5,000/Month

### POSSESSION

Immediate

### TERM

5-10 Years

### FRONTAGE

20 FT

### COMMENTS

- Turn-key restaurant space with vent and gas
- Kitchen equipment and furniture included
- In close proximity to Columbia University and City College
- Great amount of frontage with strong visibility and co-tenancy

### NEIGHBORS

C Town Market • Metro by T-Mobile • Total by Verizon • Pepo's Pizza • Tidal Tea • Fruces • La Casita • Round the Clock Deli

### TRANSPORTATION

2 3 B

PROPERTY INFORMATION

JAMES FAMULARO

President

DANE HARLOWE

Director

212.468.5966

dharlowe@meridiancapital.com

NOAM AZIZ

Associate

212.468.5984

naziz@meridiancapital.com

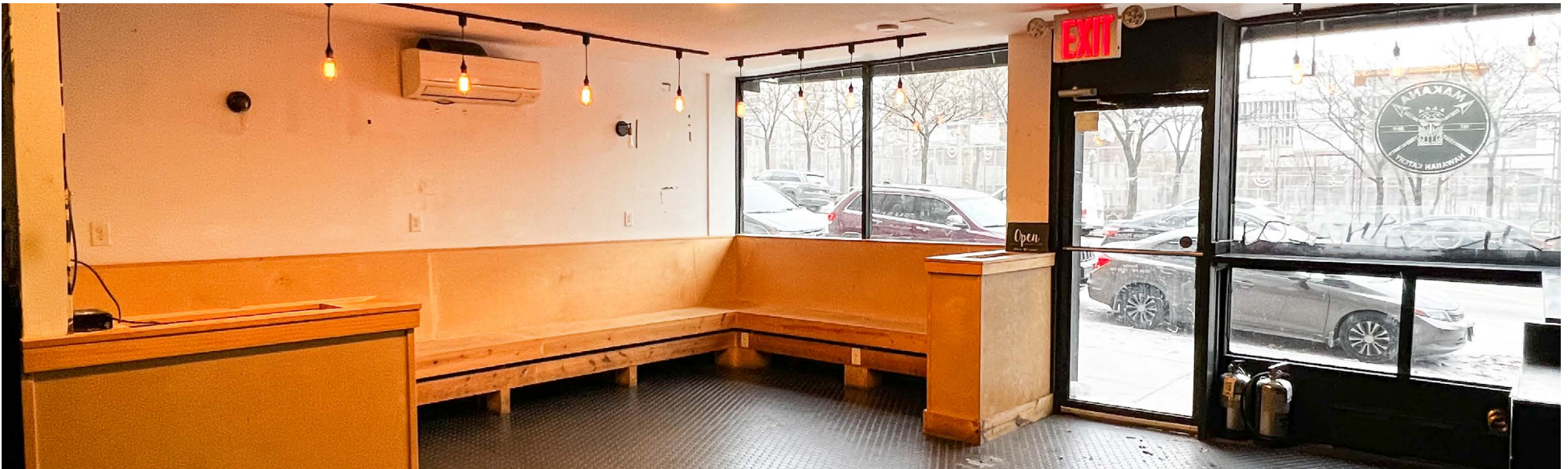
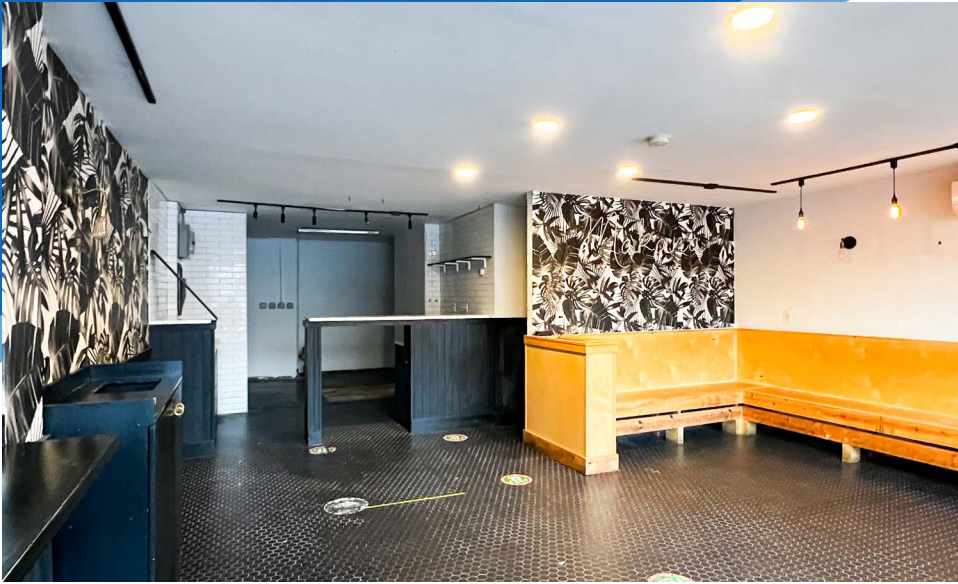


All information supplied is from sources deemed reliable and is furnished subject to errors, omissions, modifications, removal of the listing from sale or lease, and to any listing conditions, including the rates and manner of payment of commissions for particular offerings imposed by Meridian Capital Group. This information may include estimates and projections prepared by Meridian Capital Group with respect to future events, and these future events may or may not actually occur. Such estimates and projections reflect various assumptions concerning anticipated results. While Meridian Capital Group believes these assumptions are reasonable, there can be no assurance that any of these estimates and projections will be correct. Therefore, actual results may vary materially from these estimates and projections. Any square footage dimensions set forth are approximate.



1502 AMSTERDAM AVENUE  
HARLEM, NYC | Between West 134<sup>th</sup> & 135<sup>th</sup> Streets

RESTAURANT FOR LEASE



INTERIOR

JAMES FAMULARO  
President

DANE HARLOWE  
Director  
212.468.5966  
dharlowe@meridiancapital.com

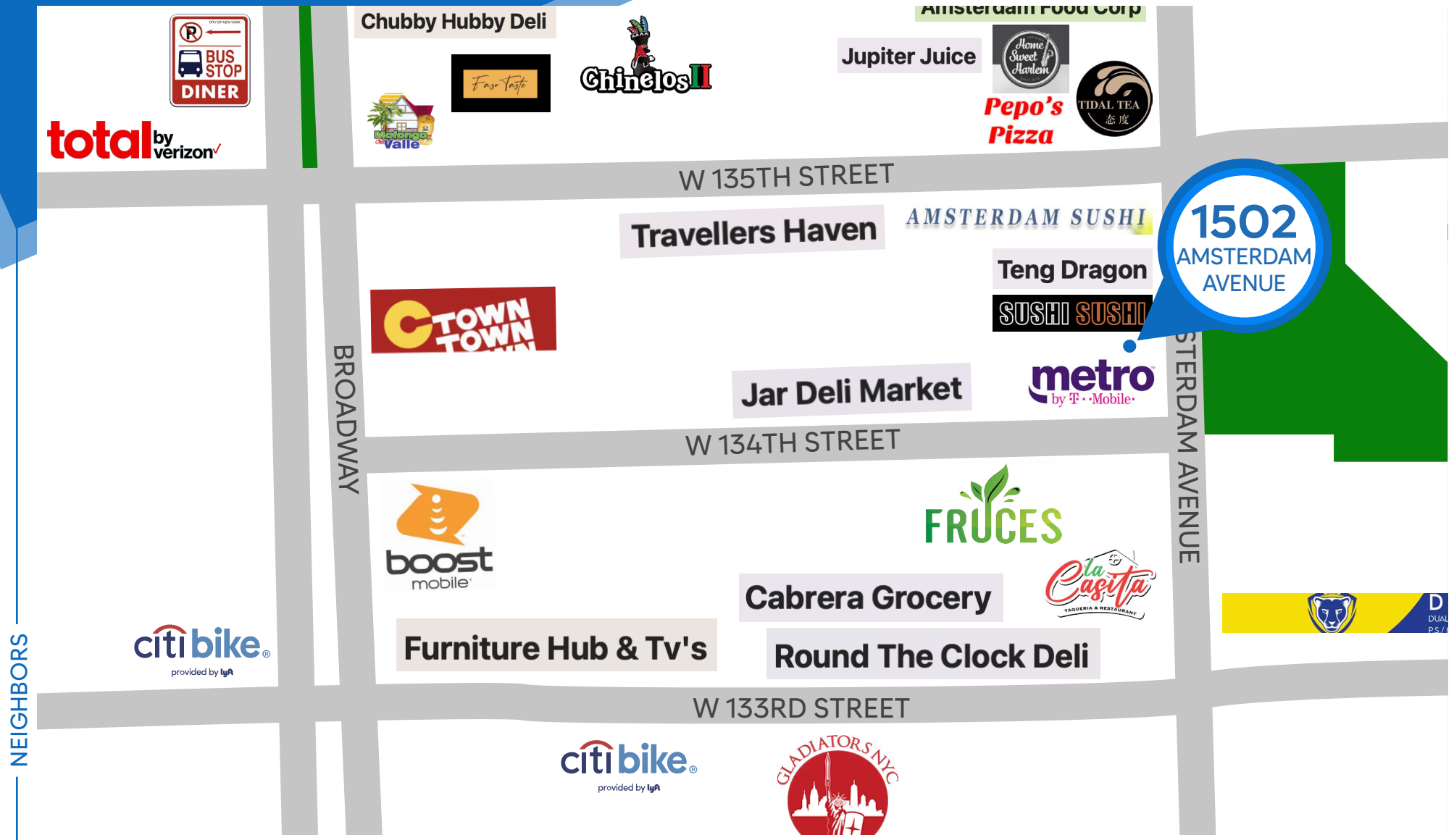
NOAM AZIZ  
Associate  
212.468.5984  
naziz@meridiancapital.com



All information supplied is from sources deemed reliable and is furnished subject to errors, omissions, modifications, removal of the listing from sale or lease, and to any listing conditions, including the rates and manner of payment of commissions for particular offerings imposed by Meridian Capital Group. This information may include estimates and projections prepared by Meridian Capital Group with respect to future events, and these future events may or may not actually occur. Such estimates and projections reflect various assumptions concerning anticipated results. While Meridian Capital Group believes these assumptions are reasonable, there can be no assurance that any of these estimates and projections will be correct. Therefore, actual results may vary materially from these estimates and projections. Any square footage dimensions set forth are approximate.

1502 AMSTERDAM AVENUE  
 HARLEM, NYC | Between West 134<sup>th</sup> & 135<sup>th</sup> Streets

RESTAURANT FOR LEASE



JAMES FAMULARO  
 President

DANE HARLOWE  
 Director  
 212.468.5966  
 dharlowe@meridiancapital.com

NOAM AZIZ  
 Associate  
 212.468.5984  
 naziz@meridiancapital.com



All information supplied is from sources deemed reliable and is furnished subject to errors, omissions, modifications, removal of the listing from sale or lease, and to any listing conditions, including the rates and manner of payment of commissions for particular offerings imposed by Meridian Capital Group. This information may include estimates and projections prepared by Meridian Capital Group with respect to future events, and these future events may or may not actually occur. Such estimates and projections reflect various assumptions concerning anticipated results. While Meridian Capital Group believes these assumptions are reasonable, there can be no assurance that any of these estimates and projections will be correct. Therefore, actual results may vary materially from these estimates and projections. Any square footage dimensions set forth are approximate.