

201

WADSWORTH AVENUE WASHINGTON HEIGHTS, NYC

Corner of Wadsworth Avenue & West 183rd Street

OFFICE FOR LEASE

APPROXIMATE SIZE

1,400 SF

ASKING RENT

\$6,000/Month

POSSESSION

Immediate

TERM

Long Term

COMMENTS

- Built-out office space
- Previously a dentists office
- In the heart of Washington Heights
- Close proximity to nearby subways and bus routes

NEIGHBORS

Northend • Buunni • Wahizza • Conoco Gas Station
• Chick Fil A • Green Juice Café • Boost Mobil • UPS

TRANSPORTATION

1

Bx3 Bx11 Bx13



JAMES FAMULARO
President

DANIEL RACHLINE
Associate
212.468.5956
drachline@meridiancapital.com

DANNY HEREDIA
Associate
212.468.5905
dheredia@meridiancapital.com

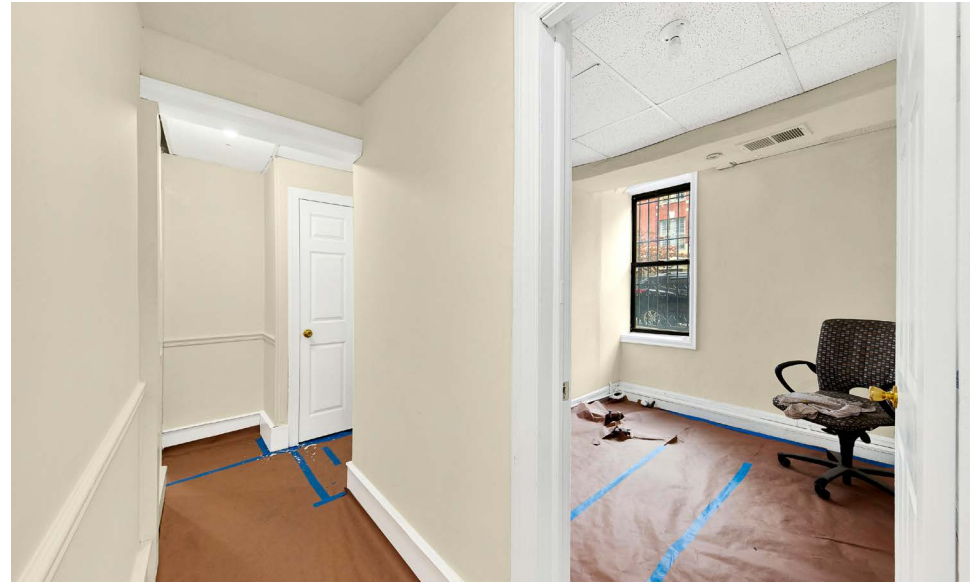
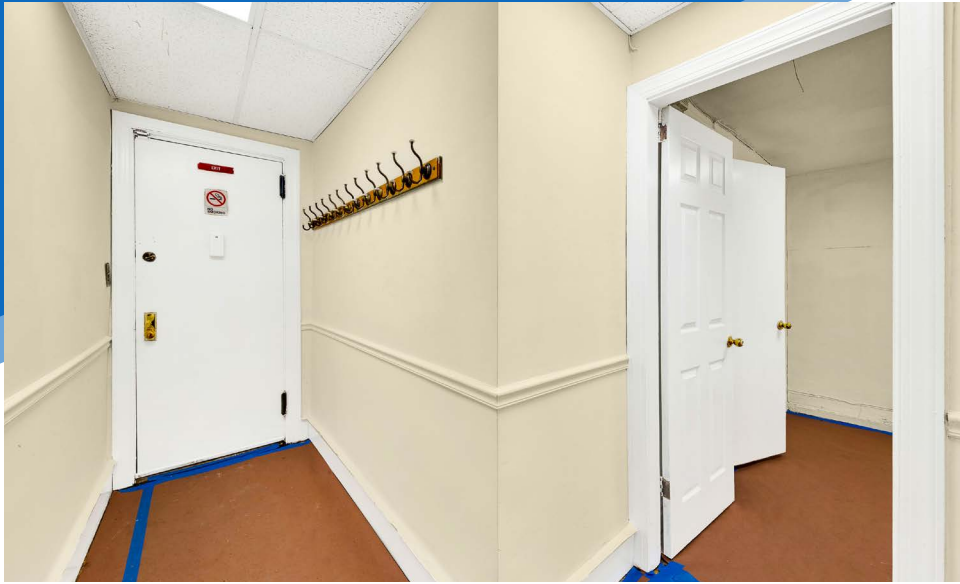
 **MERIDIAN**
RETAIL LEASING

All information supplied is from sources deemed reliable and is furnished subject to errors, omissions, modifications, removal of the listing from sale or lease, and to any listing conditions, including the rates and manner of payment of commissions for particular offerings imposed by Meridian Capital Group. This information may include estimates and projections prepared by Meridian Capital Group with respect to future events, and these future events may or may not actually occur. Such estimates and projections reflect various assumptions concerning anticipated results. While Meridian Capital Group believes these assumptions are reasonable, there can be no assurance that any of these estimates and projections will be correct. Therefore, actual results may vary materially from these estimates and projections. Any square footage dimensions set forth are approximate.

201 WADSWORTH AVENUE

WASHINGTON HEIGHTS, NYC | Corner of Wadsworth Avenue and West 183rd Street

OFFICE FOR LEASE



INTERIOR

JAMES FAMULARO
President

DANIEL RACHLINE
Associate
212.468.5956
drachline@meridiancapital.com

DANNY HEREDIA
Associate
212.468.5905
dheredia@meridiancapital.com



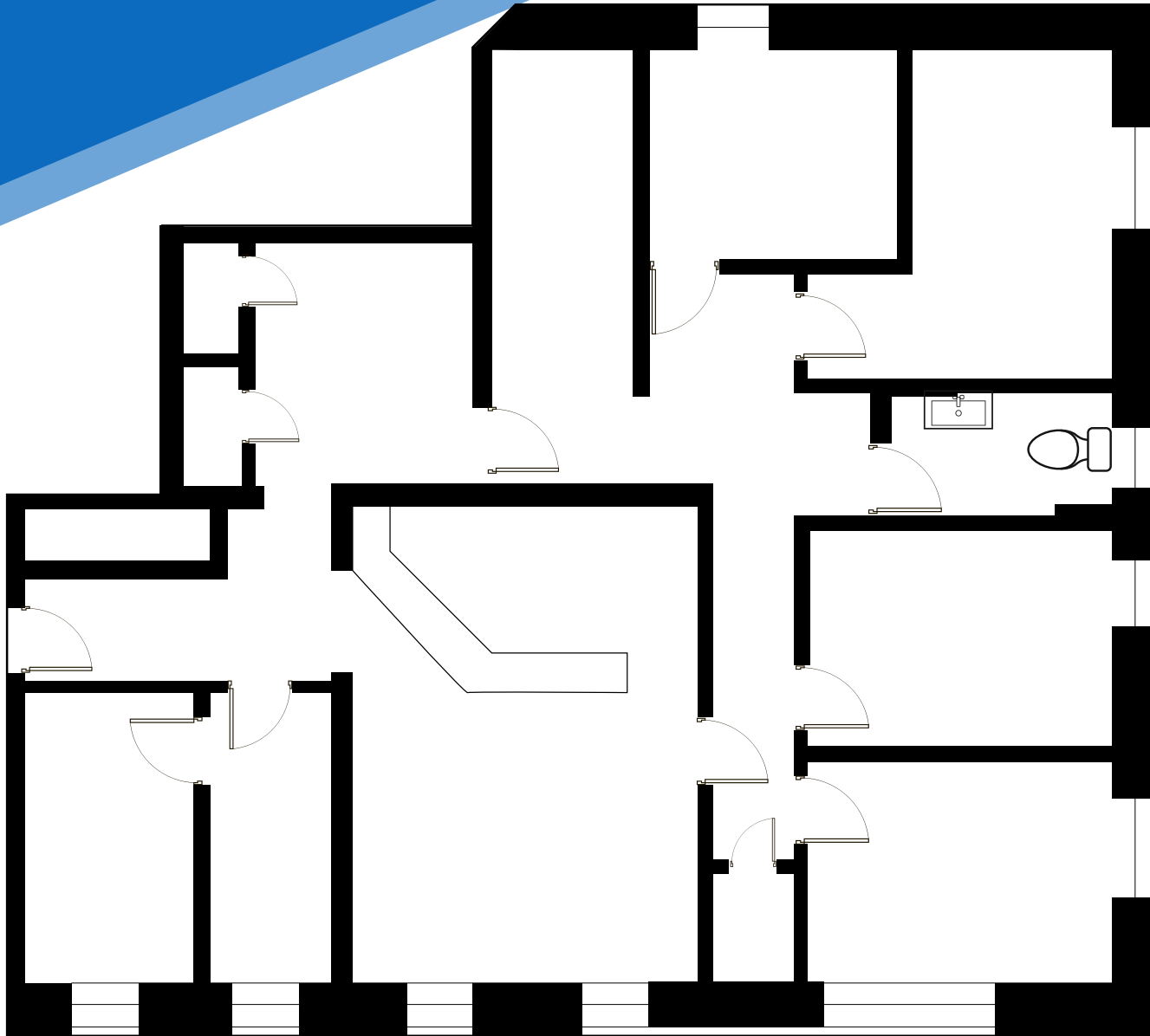
All information supplied is from sources deemed reliable and is furnished subject to errors, omissions, modifications, removal of the listing from sale or lease, and to any listing conditions, including the rates and manner of payment of commissions for particular offerings imposed by Meridian Capital Group. This information may include estimates and projections prepared by Meridian Capital Group with respect to future events, and these future events may or may not actually occur. Such estimates and projections reflect various assumptions concerning anticipated results. While Meridian Capital Group believes these assumptions are reasonable, there can be no assurance that any of these estimates and projections will be correct. Therefore, actual results may vary materially from these estimates and projections. Any square footage dimensions set forth are approximate.

201 WADSWORTH AVENUE

WASHINGTON HEIGHTS, NYC | Corner of Wadsworth Avenue and West 183rd Street

OFFICE FOR LEASE

FLOOR PLAN



JAMES FAMULARO
President

DANIEL RACHLINE
Associate
212.468.5956
drachline@meridiancapital.com

DANNY HEREDIA
Associate
212.468.5905
dheredia@meridiancapital.com

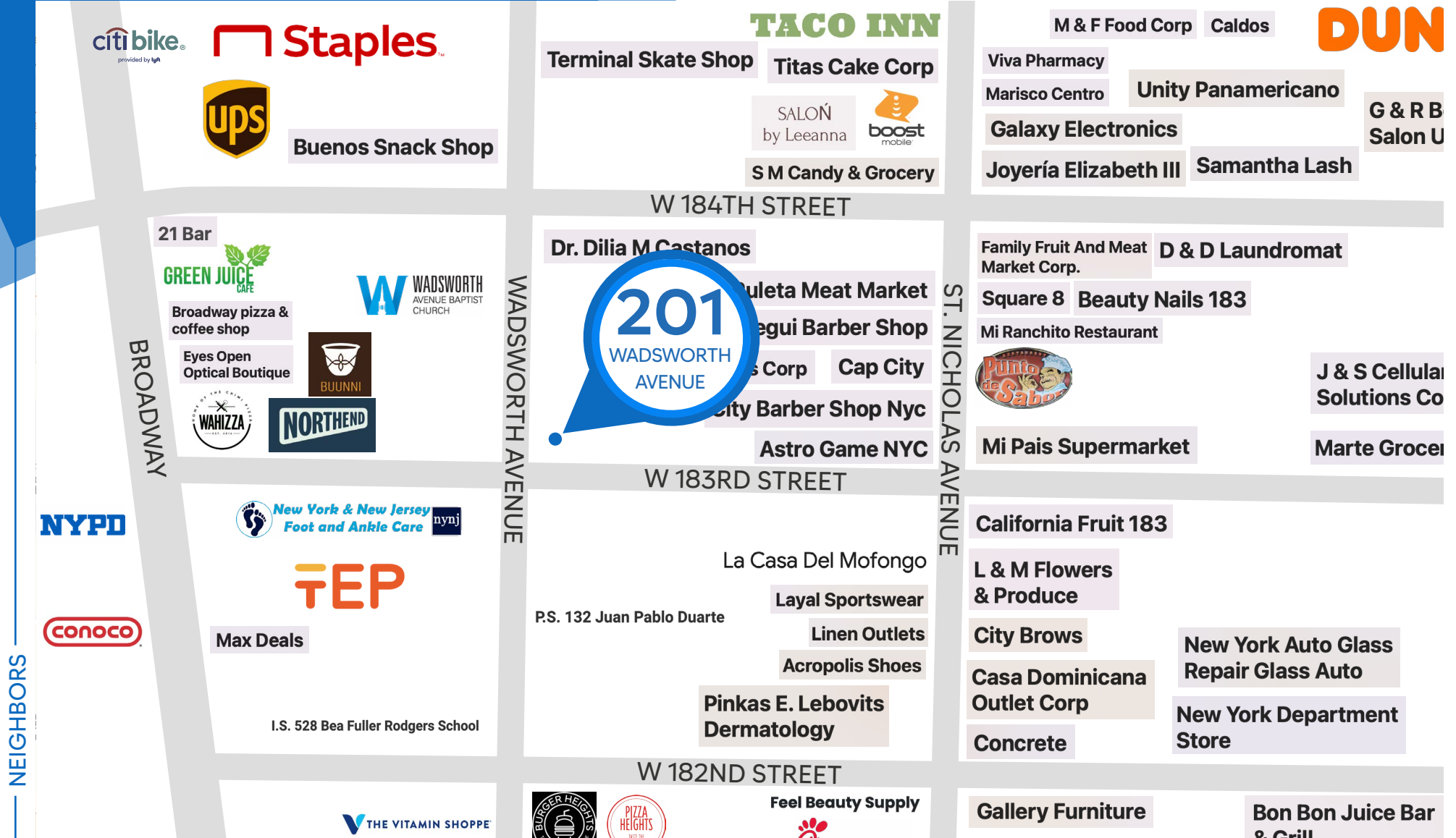


All information supplied is from sources deemed reliable and is furnished subject to errors, omissions, modifications, removal of the listing from sale or lease, and to any listing conditions, including the rates and manner of payment of commissions for particular offerings imposed by Meridian Capital Group. This information may include estimates and projections prepared by Meridian Capital Group with respect to future events, and these future events may or may not actually occur. Such estimates and projections reflect various assumptions concerning anticipated results. While Meridian Capital Group believes these assumptions are reasonable, there can be no assurance that any of these estimates and projections will be correct. Therefore, actual results may vary materially from these estimates and projections. Any square footage dimensions set forth are approximate.

201 WADSWORTH AVENUE

WASHINGTON HEIGHTS, NYC | Corner of Wadsworth Avenue and West 183rd Street

OFFICE FOR LEASE



NEIGHBORS

JAMES FAMULARO
President

DANIEL RACHLINE
Associate
212.468.5956
drachline@meridiancapital.com

DANNY HEREDIA
Associate
212.468.5905
dheredia@meridiancapital.com



All information supplied is from sources deemed reliable and is furnished subject to errors, omissions, modifications, removal of the listing from sale or lease, and to any listing conditions, including the rates and manner of payment of commissions for particular offerings imposed by Meridian Capital Group. This information may include estimates and projections prepared by Meridian Capital Group with respect to future events, and these future events may or may not actually occur. Such estimates and projections reflect various assumptions concerning anticipated results. While Meridian Capital Group believes these assumptions are reasonable, there can be no assurance that any of these estimates and projections will be correct. Therefore, actual results may vary materially from these estimates and projections. Any square footage dimensions set forth are approximate.