

248

ELIZABETH STREET NOLITA, NYC

Between East Houston & Prince Streets

RETAIL FOR LEASE

APPROXIMATE SIZE

700 SF + Basement

ASKING RENT

\$15,000/Month

POSSESSION

Immediate

TERM

Negotiable

FRONTAGE

9 FT

COMMENTS

- Clean jewel box space located in the heart of Nolita
- High foot traffic shopping block with great co-tenancy
- Perfect for any dry use retailer

NEIGHBORS

Abbode • Gorjana • ba&sh • Torrisi • Everlane •
Le Labo • Diptyque • Loeffler Randall • Vince
• Milk Bar • Solidcore • Prince Street Pizza • Astrid &
Miyu • Tacombi • The Musket Room • Raf's • Aesop

TRANSPORTATION

6 B D F M



PROPERTY INFORMATION

JAMES FAMULARO
President

GARRETT KELLY
Director
212.468.5939
gkelly@meridiancapital.com

 **MERIDIAN**
RETAIL LEASING

All information supplied is from sources deemed reliable and is furnished subject to errors, omissions, modifications, removal of the listing from sale or lease, and to any listing conditions, including the rates and manner of payment of commissions for particular offerings imposed by Meridian Capital Group. This information may include estimates and projections prepared by Meridian Capital Group with respect to future events, and these future events may or may not actually occur. Such estimates and projections reflect various assumptions concerning anticipated results. While Meridian Capital Group believes these assumptions are reasonable, there can be no assurance that any of these estimates and projections will be correct. Therefore, actual results may vary materially from these estimates and projections. Any square footage dimensions set forth are approximate.

248 ELIZABETH STREET

NOLITA, NYC | Between East Houston and Prince Streets

RETAIL FOR LEASE



INTERIOR

JAMES FAMULARO
President

GARRETT KELLY
Director
212.468.5939
gkelly@meridiancapital.com

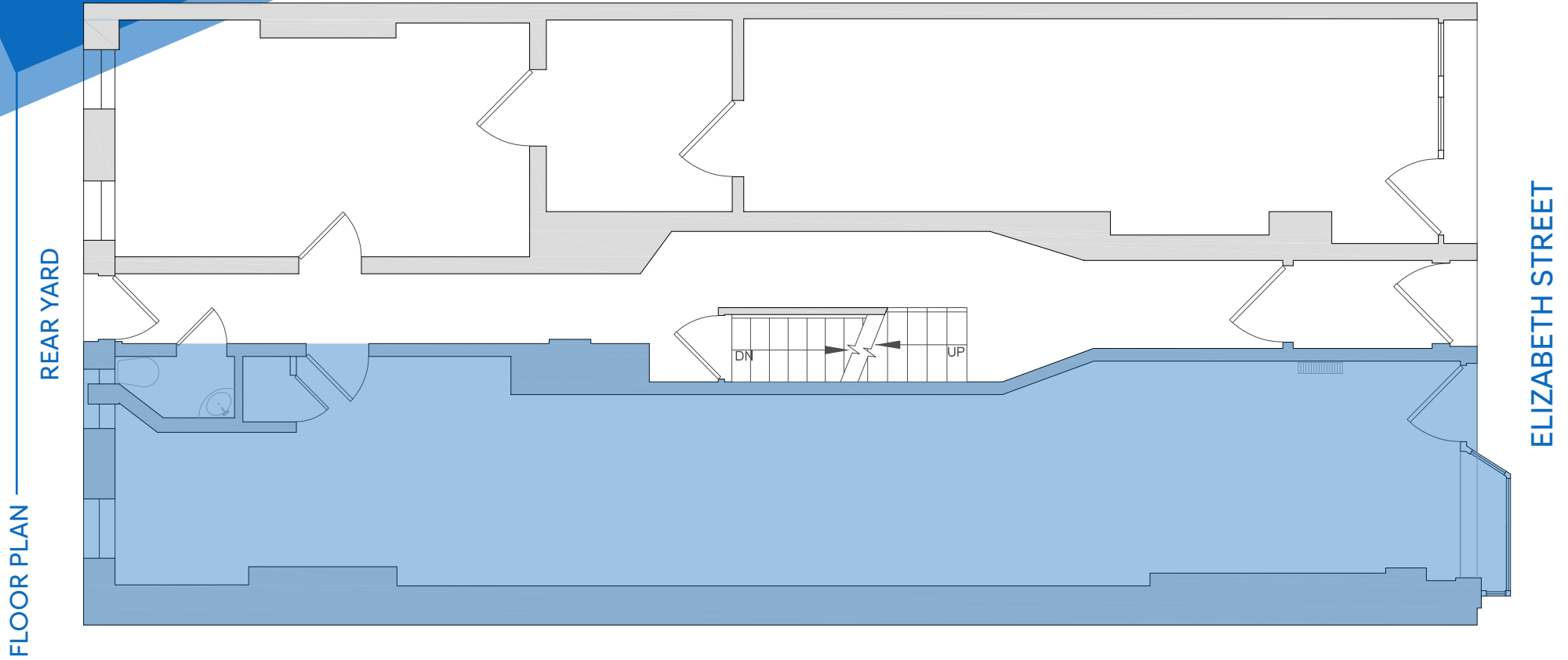


All information supplied is from sources deemed reliable and is furnished subject to errors, omissions, modifications, removal of the listing from sale or lease, and to any listing conditions, including the rates and manner of payment of commissions for particular offerings imposed by Meridian Capital Group. This information may include estimates and projections prepared by Meridian Capital Group with respect to future events, and these future events may or may not actually occur. Such estimates and projections reflect various assumptions concerning anticipated results. While Meridian Capital Group believes these assumptions are reasonable, there can be no assurance that any of these estimates and projections will be correct. Therefore, actual results may vary materially from these estimates and projections. Any square footage dimensions set forth are approximate.

248 ELIZABETH STREET

NOLITA, NYC | Between East Houston and Prince Streets

RETAIL FOR LEASE



FLOOR PLAN

JAMES FAMULARO
President

GARRETT KELLY
Director
212.468.5939
gkelly@meridiancapital.com



All information supplied is from sources deemed reliable and is furnished subject to errors, omissions, modifications, removal of the listing from sale or lease, and to any listing conditions, including the rates and manner of payment of commissions for particular offerings imposed by Meridian Capital Group. This information may include estimates and projections prepared by Meridian Capital Group with respect to future events, and these future events may or may not actually occur. Such estimates and projections reflect various assumptions concerning anticipated results. While Meridian Capital Group believes these assumptions are reasonable, there can be no assurance that any of these estimates and projections will be correct. Therefore, actual results may vary materially from these estimates and projections. Any square footage dimensions set forth are approximate.

248 ELIZABETH STREET

NOLITA, NYC | Between East Houston and Prince Streets

RETAIL FOR LEASE



NEIGHBORS

JAMES FAMULARO
President

GARRETT KELLY
Director
212.468.5939
gkelly@meridiancapital.com



All information supplied is from sources deemed reliable and is furnished subject to errors, omissions, modifications, removal of the listing from sale or lease, and to any listing conditions, including the rates and manner of payment of commissions for particular offerings imposed by Meridian Capital Group. This information may include estimates and projections prepared by Meridian Capital Group with respect to future events, and these future events may or may not actually occur. Such estimates and projections reflect various assumptions concerning anticipated results. While Meridian Capital Group believes these assumptions are reasonable, there can be no assurance that any of these estimates and projections will be correct. Therefore, actual results may vary materially from these estimates and projections. Any square footage dimensions set forth are approximate.