

200

CHURCH STREET TRIBECA, NYC

Corner of Church & Duane Streets

RESTAURANT FOR LEASE

APPROXIMATE SIZE

Ground Floor: 2,364 SF
Mezzanine: 650 SF
Basement: 1,607 SF

ASKING RENT

Upon Request

POSSESSION

Immediate

TERM

Negotiable

FRONTAGE

110 FT Wrararound

COMMENTS

- Corner restaurant located in the heart of Tribeca
- High residential area with heavy foot traffic
- Fully vented restaurant with a previous liquor license in place
- Basement access for loading and delivery

NEIGHBORS

Pure Barre • Sweetgreen • Plump • Heyday • Smyth Tribeca • MAC • Core Power Yoga • Weather Up

TRANSPORTATION

1 2 A C E



PROPERTY INFORMATION

JAMES FAMULARO
President

BEN BIBERAJ
Senior Director
703.434.1461
bbiberaj@meridiancapital.com

SAM TUCKER
Associate
212.468.5952
stucker@meridiancapital.com

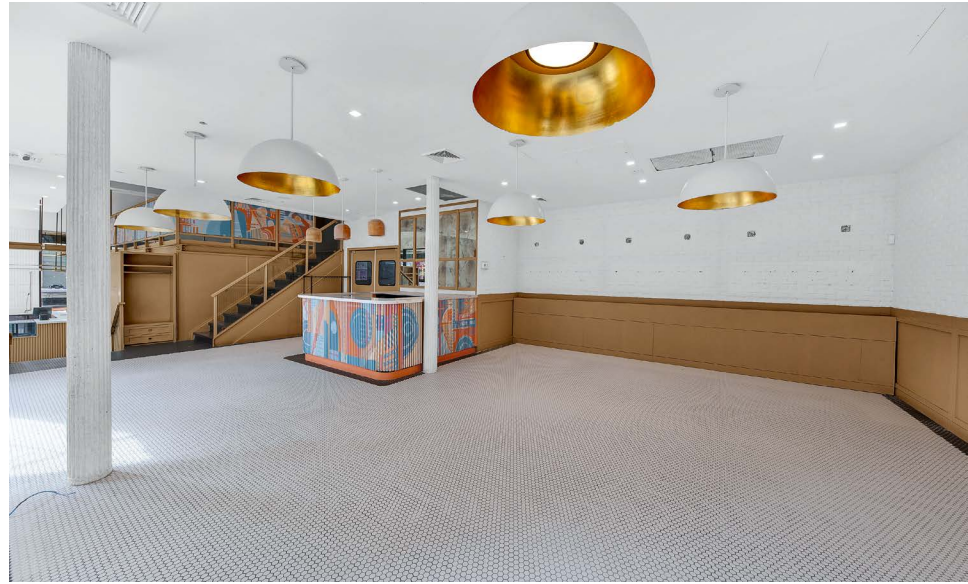
MERIDIAN
RETAIL LEASING

All information supplied is from sources deemed reliable and is furnished subject to errors, omissions, modifications, removal of the listing from sale or lease, and to any listing conditions, including the rates and manner of payment of commissions for particular offerings imposed by Meridian Capital Group. This information may include estimates and projections prepared by Meridian Capital Group with respect to future events, and these future events may or may not actually occur. Such estimates and projections reflect various assumptions concerning anticipated results. While Meridian Capital Group believes these assumptions are reasonable, there can be no assurance that any of these estimates and projections will be correct. Therefore, actual results may vary materially from these estimates and projections. Any square footage dimensions set forth are approximate.

200 CHURCH STREET

TRIBECA, NYC | Corner of Church and Duane Streets

RESTAURANT FOR LEASE



INTERIOR

JAMES FAMULARO
President

BEN BIBERAJ
Senior Director
703.434.1461
bbiberaj@meridiancapital.com

SAM TUCKER
Associate
212.468.5952
stucker@meridiancapital.com



All information supplied is from sources deemed reliable and is furnished subject to errors, omissions, modifications, removal of the listing from sale or lease, and to any listing conditions, including the rates and manner of payment of commissions for particular offerings imposed by Meridian Capital Group. This information may include estimates and projections prepared by Meridian Capital Group with respect to future events, and these future events may or may not actually occur. Such estimates and projections reflect various assumptions concerning anticipated results. While Meridian Capital Group believes these assumptions are reasonable, there can be no assurance that any of these estimates and projections will be correct. Therefore, actual results may vary materially from these estimates and projections. Any square footage dimensions set forth are approximate.

200 CHURCH STREET

TRIBECA, NYC | Corner of Church and Duane Streets

RESTAURANT FOR LEASE

FLOOR PLAN

DUANE STREET



THOMAS STREET

CHURCH STREET

JAMES FAMULARO
President

BEN BIBERAJ
Senior Director
703.434.1461
bbiberaj@meridiancapital.com

SAM TUCKER
Associate
212.468.5952
stucker@meridiancapital.com



All information supplied is from sources deemed reliable and is furnished subject to errors, omissions, modifications, removal of the listing from sale or lease, and to any listing conditions, including the rates and manner of payment of commissions for particular offerings imposed by Meridian Capital Group. This information may include estimates and projections prepared by Meridian Capital Group with respect to future events, and these future events may or may not actually occur. Such estimates and projections reflect various assumptions concerning anticipated results. While Meridian Capital Group believes these assumptions are reasonable, there can be no assurance that any of these estimates and projections will be correct. Therefore, actual results may vary materially from these estimates and projections. Any square footage dimensions set forth are approximate.

200 CHURCH STREET

TRIBECA, NYC | Corner of Church and Duane Streets

RESTAURANT FOR LEASE

The map displays 200 Church Street, a prime retail location in Tribeca, NYC. The street runs north-south between Duane Street and Warren Street. Key streets shown include Hudson Street, W Broadway, and Church Street. A large blue callout bubble highlights '200 CHURCH STREET'. The map is populated with logos of various businesses and institutions in the area, including:

- Neighboring Streets:**
 - W Broadway:** Auno Tribeca, TASTE CHINESE RESTAURANT, pure barre, plump, HEYDAY, NISH NUSH, MAC, Disney+, SKIN LAUNDRY, citi bike, corepower YOGA, the craft studio, Gigino trattoria, ALEX AND ANI, Reade Street Animal Hospital, Macys.
 - Church Street:** HUNGRY GHOST COFFEE, The Sorelle, ACAPULCO, CHIPOTLE MEXICAN GRILL, EUROPEAN WAX CENTER, Fresco Tortillas, TAVERN ON READE, SUBWAY, THE HUMMUS & PITA CO, Checkers, POTBELLY SANDWICH SHOP, citi bike, Akimoto Sushi, Fresh Curry, Balcony Cafe 1803, Modern Martial Arts, Starbucks, Andy's Deli NYC, MATTO, Fire Department City of New York.
 - Duane Street:** Auro Tribeca, TASTE CHINESE RESTAURANT, pure barre, plump, HEYDAY, NISH NUSH, MAC, Disney+, SKIN LAUNDRY, citi bike, corepower YOGA, the craft studio, Gigino trattoria, ALEX AND ANI, Reade Street Animal Hospital, Macys.
 - Warren Street:** MUDVILLE 9, China Red Gourmet, Smyth TRIBECA, LE PAIN QUOTIDIEN, CVS pharmacy, DUNKIN', BASKIN ROBBINS, icca ARTESANO, MORSEI, BANK OF AMERICA.
- Other Streets:**
 - THOMAS STREET:** THE ODEON, Ken-Zen Institute, buddha-bar, NOFAR METHOD, M C Choi French Restaurant, GLOWBAR, Laser.Away, TAKAHACHI, FONDA.
 - Duane Street:** Auro Tribeca, TASTE CHINESE RESTAURANT, pure barre, plump, HEYDAY, NISH NUSH, MAC, Disney+, SKIN LAUNDRY, citi bike, corepower YOGA, the craft studio, Gigino trattoria, ALEX AND ANI, Reade Street Animal Hospital, Macys.
 - Chambers Street:** MUDVILLE 9, China Red Gourmet, Smyth TRIBECA, LE PAIN QUOTIDIEN, CVS pharmacy, DUNKIN', BASKIN ROBBINS, icca ARTESANO, MORSEI, BANK OF AMERICA.
 - Warren Street:** MUDVILLE 9, China Red Gourmet, Smyth TRIBECA, LE PAIN QUOTIDIEN, CVS pharmacy, DUNKIN', BASKIN ROBBINS, icca ARTESANO, MORSEI, BANK OF AMERICA.

NEIGHBORS

JAMES FAMULARO
President

BEN BIBERAJ
Senior Director
703.434.1461
bbiberaj@meridiancapital.com

SAM TUCKER
Associate
212.468.5952
stucker@meridiancapital.com



All information supplied is from sources deemed reliable and is furnished subject to errors, omissions, modifications, removal of the listing from sale or lease, and to any listing conditions, including the rates and manner of payment of commissions for particular offerings imposed by Meridian Capital Group. This information may include estimates and projections prepared by Meridian Capital Group with respect to future events, and these future events may or may not actually occur. Such estimates and projections reflect various assumptions concerning anticipated results. While Meridian Capital Group believes these assumptions are reasonable, there can be no assurance that any of these estimates and projections will be correct. Therefore, actual results may vary materially from these estimates and projections. Any square footage dimensions set forth are approximate.