

# 127

**EAST 7<sup>TH</sup> STREET**  
EAST VILLAGE, NYC

Between Avenue A & First Avenue

RESTAURANT FOR LEASE

#### APPROXIMATE SIZE

800 SF + Basement

#### ASKING RENT

\$6,900/Month

#### POSSESSION

Arranged

#### TERM

5 Years

#### FRONTAGE

8 FT

#### COMMENTS

- Currently "Da Radda"
- Turn-key restaurant space in the heart of East Village
- Vented with electric kitchen
- Basement with walk-in freezer
- **Key money upon request**

#### NEIGHBORS

The Grafton • Miss Lily's • Pineapple Club • Van Leeuwen • Osakana • Cagen • Brooklyn Dumpling Shop • Starbucks • Village Square Pizza • Pardon My French • Kikoo

#### TRANSPORTATION



PROPERTY INFORMATION

**JAMES FAMULARO**  
President

**KYLE FINK**  
Associate  
212.468.5980  
kfink@meridiancapital.com

**JACOB RUBIN**  
Associate  
212.468.5942  
jrubin@meridiancapital.com

**DANNY HEREDIA**  
Associate  
212.468.5905  
dheredia@meridiancapital.com

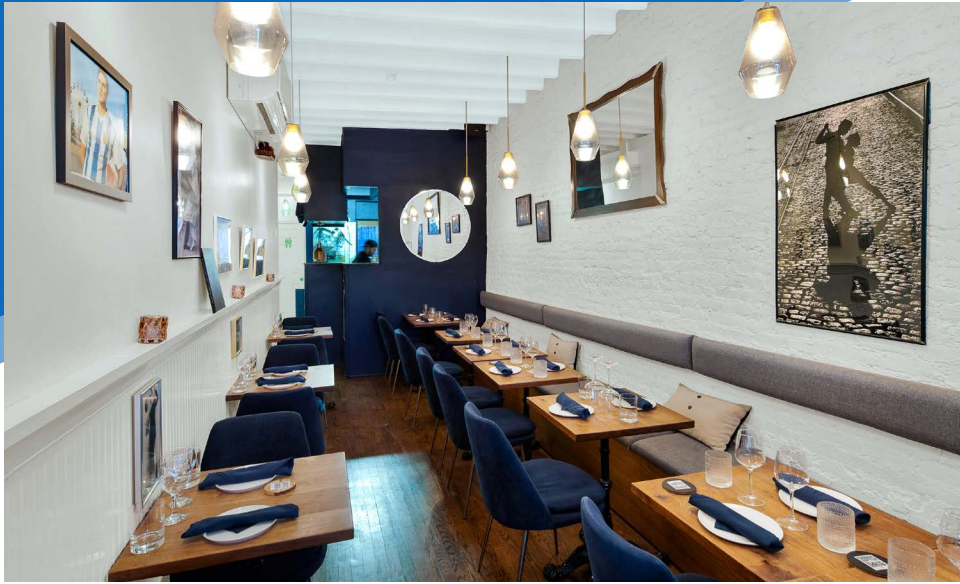


All information supplied is from sources deemed reliable and is furnished subject to errors, omissions, modifications, removal of the listing from sale or lease, and to any listing conditions, including the rates and manner of payment of commissions for particular offerings imposed by Meridian Capital Group. This information may include estimates and projections prepared by Meridian Capital Group with respect to future events, and these future events may or may not actually occur. Such estimates and projections reflect various assumptions concerning anticipated results. While Meridian Capital Group believes these assumptions are reasonable, there can be no assurance that any of these estimates and projections will be correct. Therefore, actual results may vary materially from these estimates and projections. Any square footage dimensions set forth are approximate.

127 EAST 7<sup>TH</sup> STREET

EAST VILLAGE, NYC | Between Avenue A and First Avenue

RESTAURANT FOR LEASE



INTERIOR

JAMES FAMULARO  
President

KYLE FINK  
Associate  
212.468.5980  
kfink@meridiancapital.com

JACOB RUBIN  
Associate  
212.468.5942  
jrubin@meridiancapital.com

DANNY HEREDIA  
Associate  
212.468.5905  
dheredia@meridiancapital.com



All information supplied is from sources deemed reliable and is furnished subject to errors, omissions, modifications, removal of the listing from sale or lease, and to any listing conditions, including the rates and manner of payment of commissions for particular offerings imposed by Meridian Capital Group. This information may include estimates and projections prepared by Meridian Capital Group with respect to future events, and these future events may or may not actually occur. Such estimates and projections reflect various assumptions concerning anticipated results. While Meridian Capital Group believes these assumptions are reasonable, there can be no assurance that any of these estimates and projections will be correct. Therefore, actual results may vary materially from these estimates and projections. Any square footage dimensions set forth are approximate.

127 EAST 7<sup>TH</sup> STREET

EAST VILLAGE, NYC | Between Avenue A and First Avenue

RESTAURANT FOR LEASE

The map displays a grid of streets from E 6th Street to E 10th Street, bounded by Second Avenue and Avenue C. A central blue callout bubble highlights the location of 127 East 7th Street. The surrounding area is filled with logos of various restaurants and businesses. A large green rectangular area is present in the center of the map, partially overlapping the 127 East 7th Street location.

**NEIGHBORS** (Vertical text on the left side of the map)

**127 EAST 7<sup>TH</sup> STREET** (Callout bubble)

**RESTAURANTS AND BUSINESSES:**

- Top Row (E 10th Street):** Pinka, Rowdy Rooster, TSUKIMI, [Logo]
- Second Row (E 9th Street):** Dallas BBQ, Dan & John's Wings, Kikoo, Veselka, Citi Bike
- Third Row (ST MARKS PLACE):** Vegan Grill, Abraco, Big, Mochinut, Dumpling Shop, OSAKANA, nudibranch
- Fourth Row (E 7th Street):** Van Leeuwen, [Logo], Sidney's Five, The Headless Widow, HCEPJA, Citi Bike, Mister Paradise, SENYA, YUBU
- Bottom Row (E 6th Street):** UPS, Atelier Sucre, [Logo], Lily's, McDonald's, Mochii, Death & Co, [Logo], Vintage Cafe

**Other Businesses:** Tompkins Square Park, Studio 151 / Ichi Go Ichi, The Cabinet, Royale, Viking Waffles, Summit, San Loco, Mug & Cup, Horus Cafe, Pardon My Funch, Thirteen Water, Blink, C&B, Buenos Aires, Aveda.

JAMES FAMULARO  
President

KYLE FINK  
Associate  
212.468.5980  
kfink@meridiancapital.com

JACOB RUBIN  
Associate  
212.468.5942  
jrubin@meridiancapital.com

DANNY HEREDIA  
Associate  
212.468.5905  
dheredia@meridiancapital.com



All information supplied is from sources deemed reliable and is furnished subject to errors, omissions, modifications, removal of the listing from sale or lease, and to any listing conditions, including the rates and manner of payment of commissions for particular offerings imposed by Meridian Capital Group. This information may include estimates and projections prepared by Meridian Capital Group with respect to future events, and these future events may or may not actually occur. Such estimates and projections reflect various assumptions concerning anticipated results. While Meridian Capital Group believes these assumptions are reasonable, there can be no assurance that any of these estimates and projections will be correct. Therefore, actual results may vary materially from these estimates and projections. Any square footage dimensions set forth are approximate.