

117

EAST 7TH STREET EAST VILLAGE, NYC

Between First Avenue & Avenue A

RETAIL FOR LEASE

APPROXIMATE SIZE

600 SF

ASKING RENT

\$9,500/Month

POSSESSION

Immediate

TERM

5-10 Years

FRONTAGE

12 FT

COMMENTS

- Built-out café
- Steps from Tompkins Square Park
- Seven-day-a-week foot traffic
- All uses considered

NEIGHBORS

Craft + Carry • Cagen • Lucy's • Starbucks • Ruffian
• Pardon my French • Pineapple Club • The Cabinet
• Van Leeuwen • Miss Lily's • Mister Paradise

TRANSPORTATION



PROPERTY INFORMATION

JAMES FAMULARO
President

JACOB MAYER
Associate
212.468.5926
jmayer@meridiancapital.com



All information supplied is from sources deemed reliable and is furnished subject to errors, omissions, modifications, removal of the listing from sale or lease, and to any listing conditions, including the rates and manner of payment of commissions for particular offerings imposed by Meridian Capital Group. This information may include estimates and projections prepared by Meridian Capital Group with respect to future events, and these future events may or may not actually occur. Such estimates and projections reflect various assumptions concerning anticipated results. While Meridian Capital Group believes these assumptions are reasonable, there can be no assurance that any of these estimates and projections will be correct. Therefore, actual results may vary materially from these estimates and projections. Any square footage dimensions set forth are approximate.

117 EAST 7TH STREET

EAST VILLAGE, NYC | Between First Avenue and Avenue A

RETAIL FOR LEASE

INTERIOR

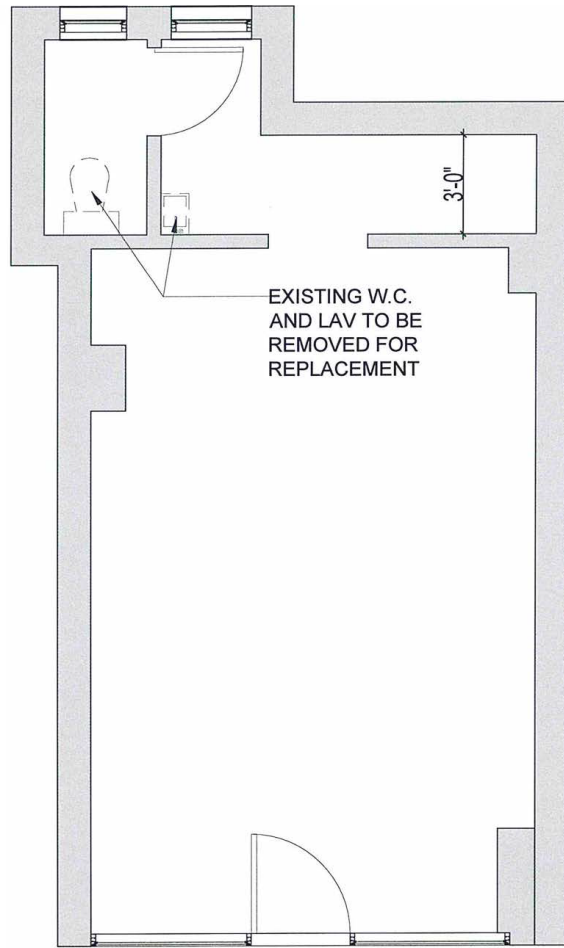


JAMES FAMULARO
President

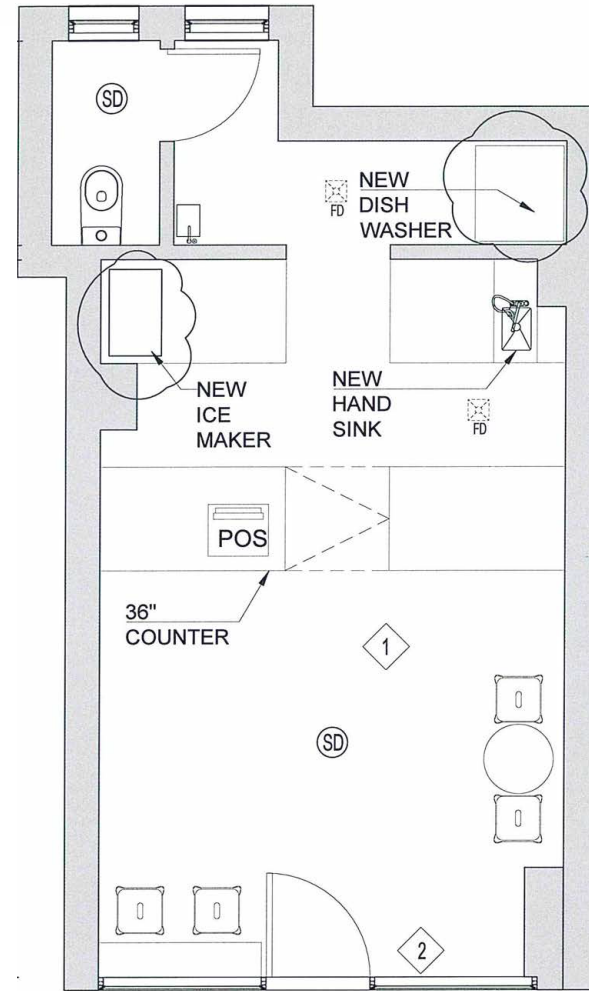
JACOB MAYER
Associate
212.468.5926
jmayer@meridiancapital.com



All information supplied is from sources deemed reliable and is furnished subject to errors, omissions, modifications, removal of the listing from sale or lease, and to any listing conditions, including the rates and manner of payment of commissions for particular offerings imposed by Meridian Capital Group. This information may include estimates and projections prepared by Meridian Capital Group with respect to future events, and these future events may or may not actually occur. Such estimates and projections reflect various assumptions concerning anticipated results. While Meridian Capital Group believes these assumptions are reasonable, there can be no assurance that any of these estimates and projections will be correct. Therefore, actual results may vary materially from these estimates and projections. Any square footage dimensions set forth are approximate.



EXISTING FLOOR PLAN



PROPOSED FLOOR PLAN

JAMES FAMULARO
President

JACOB MAYER
Associate
212.468.5926
jmayer@meridiancapital.com

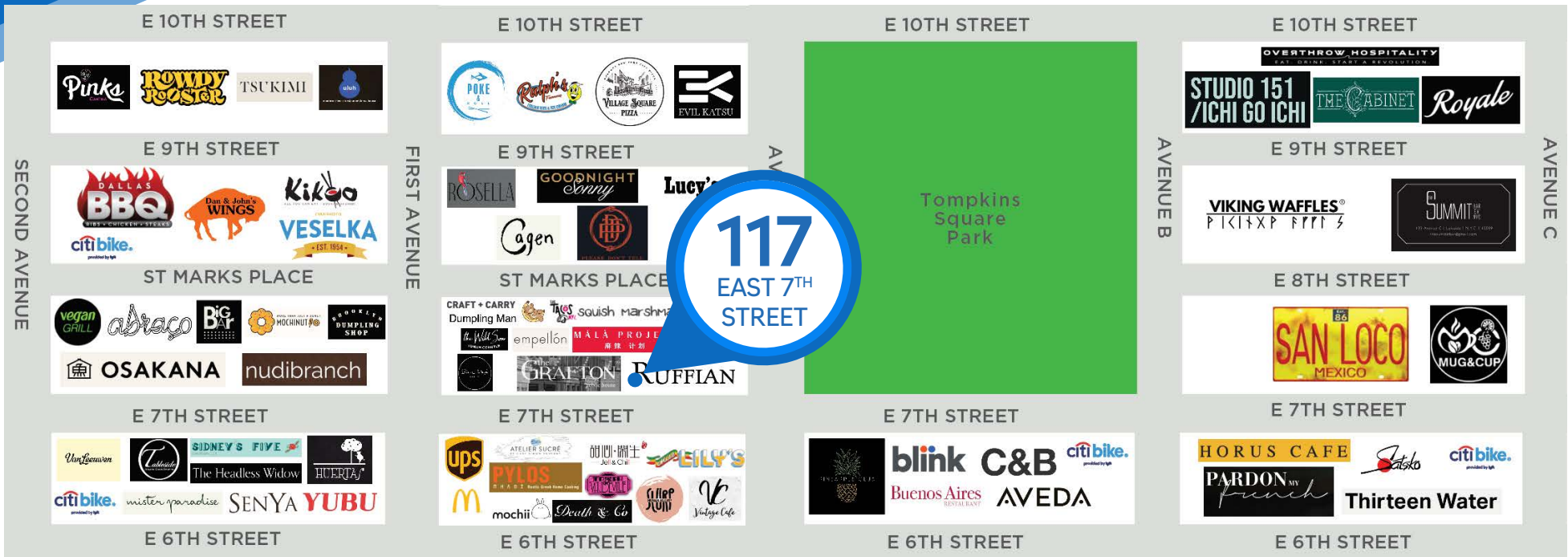


117 EAST 7TH STREET

EAST VILLAGE, NYC | Between First Avenue and Avenue A

RETAIL FOR LEASE

NEIGHBORS



JAMES FAMULARO
President

JACOB MAYER
Associate
212.468.5926
jmayer@meridiancapital.com



All information supplied is from sources deemed reliable and is furnished subject to errors, omissions, modifications, removal of the listing from sale or lease, and to any listing conditions, including the rates and manner of payment of commissions for particular offerings imposed by Meridian Capital Group. This information may include estimates and projections prepared by Meridian Capital Group with respect to future events, and these future events may or may not actually occur. Such estimates and projections reflect various assumptions concerning anticipated results. While Meridian Capital Group believes these assumptions are reasonable, there can be no assurance that any of these estimates and projections will be correct. Therefore, actual results may vary materially from these estimates and projections. Any square footage dimensions set forth are approximate.